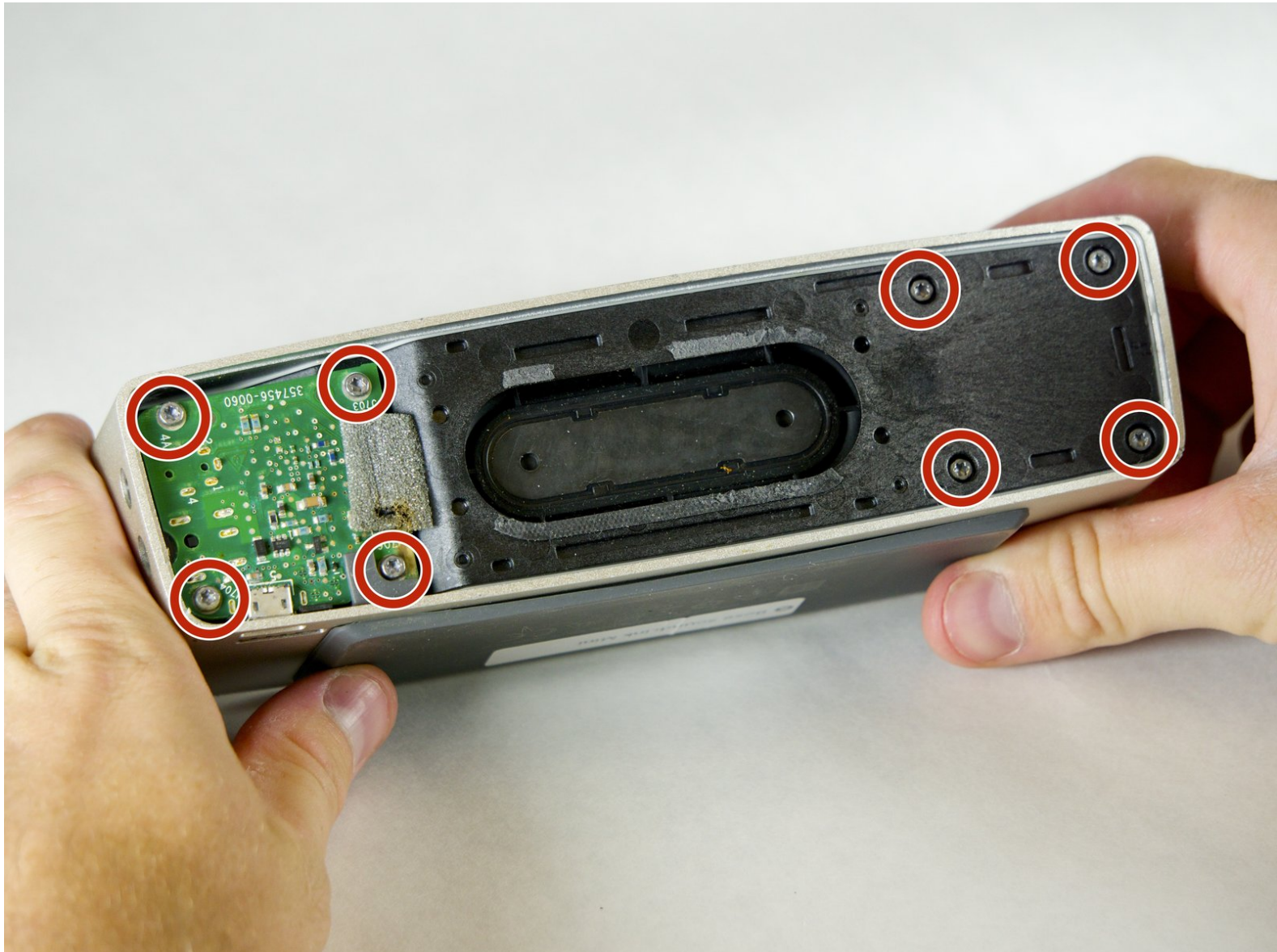




# Bose SoundLink Mini Battery Cover Replacement

Guide to replacing the battery cover on the Bose SoundLink Mini speaker.

Written By: Jordan Smith



# INTRODUCTION

The battery cover is the rubber flap on the bottom of the speaker that covers the battery. It cannot be pulled off without first going through several prerequisite steps. This guide will provide you with easy to follow steps to remove the battery cover on the Bose SoundLink Mini speaker.



## TOOLS:

- [T8 Torx Screwdriver](#) (1)
  - [Spudger](#) (1)
-

## Step 1 — Battery



- Peel back the rubber battery cover and remove the four circled 6.0 mm screws using a T8 Torx Screwdriver.

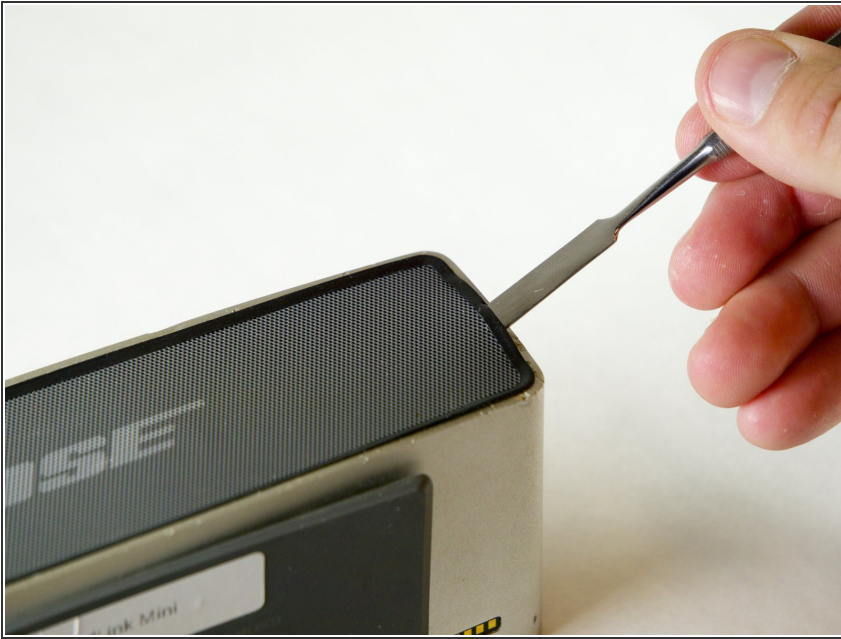
## Step 2



- While holding the cover back, pull straight up on the battery to remove it.

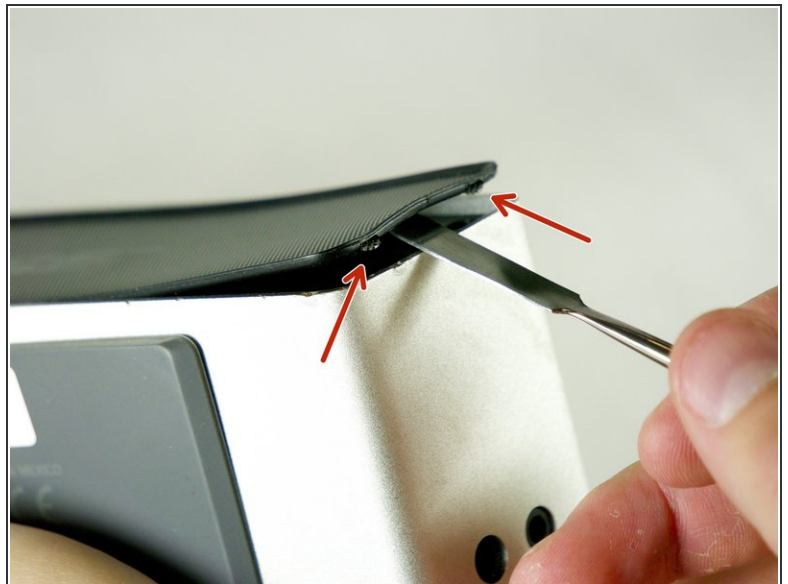


### Step 3 — Front/Back Protective Grille



- Insert the Metal Spudger between the rubber edge on the grille and the aluminum casing.
- ⓘ Place Metal Spudger in the location shown.

### Step 4



- Slowly pry up the grille until the two tabs shown pop out.

⚠ Be very gentle, the grille will bend.

## Step 5



- The grille is attached to the speaker with double sided sticky tape. To remove the grill gently pull upward while keeping tension to the right.

⚠ Be very gentle, the grille will bend.

## Step 6



- Repeat steps to remove the back grille.



## Step 7 — Battery Cover



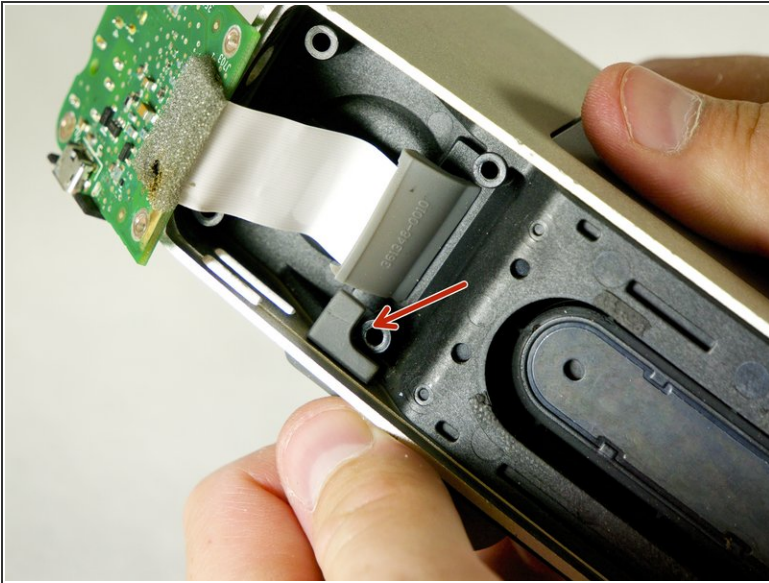
- Remove the four 15.0 mm screws on the left and the four 9.0 mm screws on the right using the T8 Torx Screwdriver.

## Step 8



- Remove the circuit board by pushing it with your index finger in the direction shown while using a nylon or metal spudger to lift it up and out of place.

## Step 9



- Carefully pull on the battery cover until the rubber tab slides out of the aluminum casing.

To reassemble your device, follow these instructions in reverse order.