



Bose SoundLink Mini Front/Back Protective Grille Replacement

Guide to removing and replacing the front and back protective grilles on the Bose SoundLink Mini speakers.

Written By: Jordan Smith



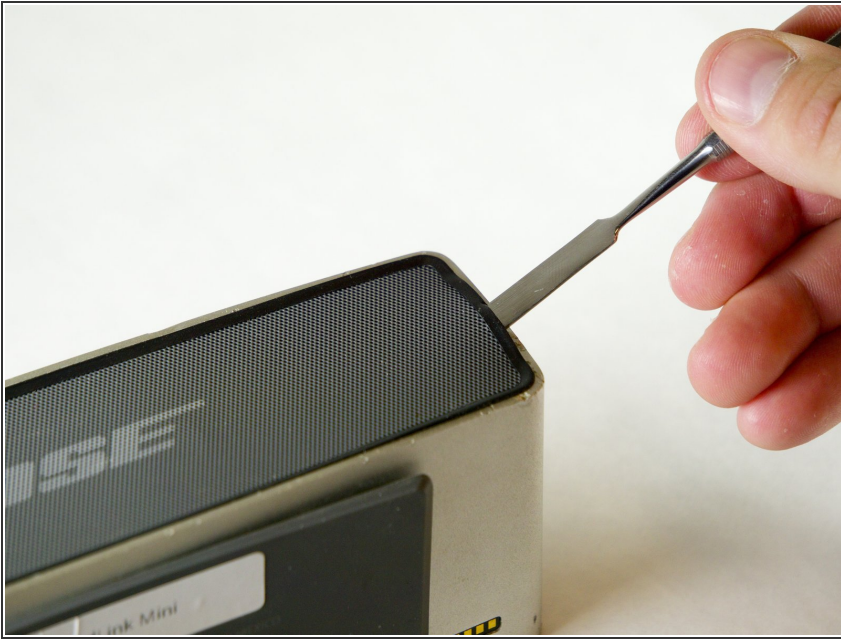
INTRODUCTION

Use this guide to replace the front or back mesh grilles. Make sure you have the required tools. The first time you remove a grille might be a little difficult due to some glue holding it in place. Be careful when removing, as the grille may bend easily.

TOOLS:

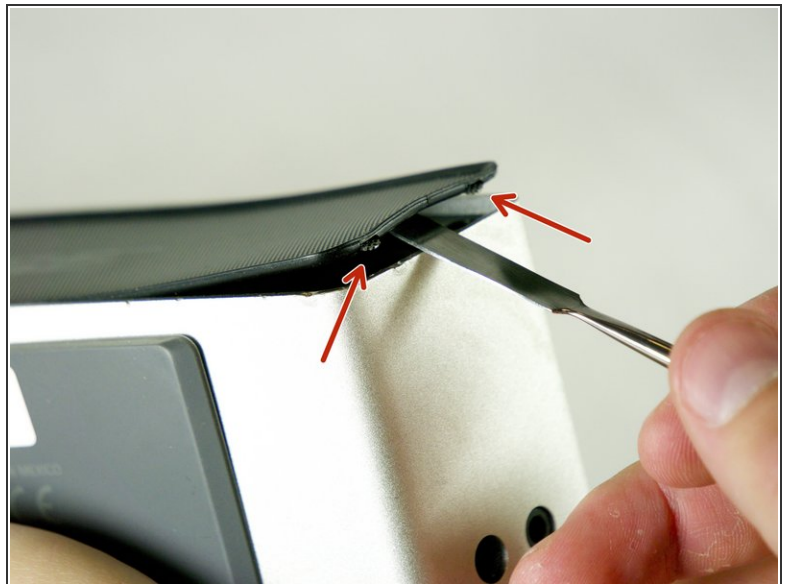
- [Metal Spudger](#) (1)
-

Step 1 — Front/Back Protective Grille



- Insert the Metal Spudger between the rubber edge on the grille and the aluminum casing.
- ⓘ Place Metal Spudger in the location shown.

Step 2



- Slowly pry up the grille until the two tabs shown pop out.

⚠ Be very gentle, the grille will bend.

Step 3



- The grille is attached to the speaker with double sided sticky tape. To remove the grill gently pull upward while keeping tension to the right.

⚠ Be very gentle, the grille will bend.

Step 4



- Repeat steps to remove the back grille.

To reassemble your device, follow these instructions in reverse order.