



Bose SoundLink Mini II Audio Port/USB Replacement

Repair guide for Audio/USB port replacement/repair for the Bose Soundlink Mini II.

Written By: Devon



INTRODUCTION

Audio buttons not working? This guide will help you replace the audio/USB port of the Bose SoundLink Mini II. In order to replace these parts make sure to have the necessary tools that are required and the replacement parts. Use caution when working with a charged battery when removing the circuit boards.

Note: This procedure requires removing and reinstalling the battery, which requires the use of a [soldering iron](#) and/or a lot of careful disassembly.



TOOLS:

- [Soldering Iron](#) (1)
 - [Desoldering Braid](#) (1)
 - [Solder](#) (1)
 - [64 Bit Driver Kit](#) (1)
 - [Metal Spudger](#) (1)
 - [T9 Torx Screwdriver](#) (1)
-

Step 1 — Battery



- Flip the speaker over onto its back.

Step 2



- Gently remove the rubber base from speaker by pulling around the edges.

Step 3



- Remove the four 6mm T9 Torx bit screws from the corners of the battery.

Step 4



- Carefully lift the battery from the side nearest the four gold contact pins, but don't try to fully remove it yet.
 - ⓘ At this point, the battery remains connected via two wires to the power supply board.
- Carefully desolder the two wires from the power supply board in order to completely detach the battery.
 - For help with soldering, see the [soldering guide](#).
 - ⓘ Alternatively, you may remove the battery and power supply board together, without any soldering, but access requires some [additional disassembly](#) while carefully leaving the battery connected via the two wires the entire time.

Step 5 — Audio Port/USB Circuit Board



- With the battery removed the button board will now be visible.

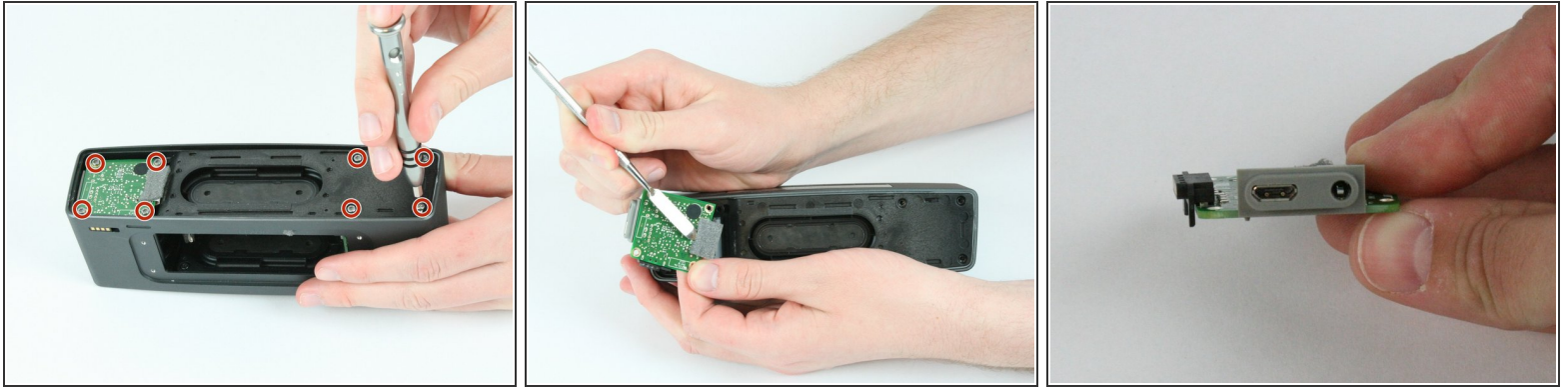
Step 6



- Remove the rear grille using the metal spudger.

⚠ The grille bends and deforms easily.

Step 7



- Remove the eight 9mm T9 Torx screws from the circuit board and back panel.
- Use a metal spudger to release the ribbon cable connector and remove cable from the audio/USB board.

To reassemble your device, follow these instructions in reverse order.