



Bose SoundLink Mini II Button Board Replacement

This guide will walk you through the process of replacing the button board on the Bose SoundLink Mini II.

Written By: jack dighera



INTRODUCTION

Audio buttons not working? This guide will help you replace the button board of the Bose SoundLink Mini II. In order to replace these parts be sure to have the necessary tools that are required and the replacement parts. Use caution when working with a charged battery while removing the circuit boards.

Note: This procedure requires removing and reinstalling the battery, which requires the use of a [soldering iron](#) and/or a lot of careful disassembly.



TOOLS:

- [Soldering Iron](#) (1)
 - [Desoldering Braid](#) (1)
 - [Solder](#) (1)
 - [64 Bit Driver Kit](#) (1)
 - [T9 Torx Screwdriver](#) (1)
 - [Metal Spudger](#) (1)
-

Step 1 — Battery



- Flip the speaker over onto its back.

Step 2



- Gently remove the rubber base from speaker by pulling around the edges.

Step 3



- Remove the four 6mm T9 Torx bit screws from the corners of the battery.

Step 4



- Carefully lift the battery from the side nearest the four gold contact pins, but don't try to fully remove it yet.
 - ⓘ At this point, the battery remains connected via two wires to the power supply board.
- Carefully desolder the two wires from the power supply board in order to completely detach the battery.
 - For help with soldering, see the [soldering guide](#).
- ⓘ Alternatively, you may remove the battery and power supply board together, without any soldering, but access requires some [additional disassembly](#) while carefully leaving the battery connected via the two wires the entire time.

Step 5 — Audio Port/USB Circuit Board



- With the battery removed the button board will now be visible.

Step 6



- Remove the rear grille using the metal spudger.

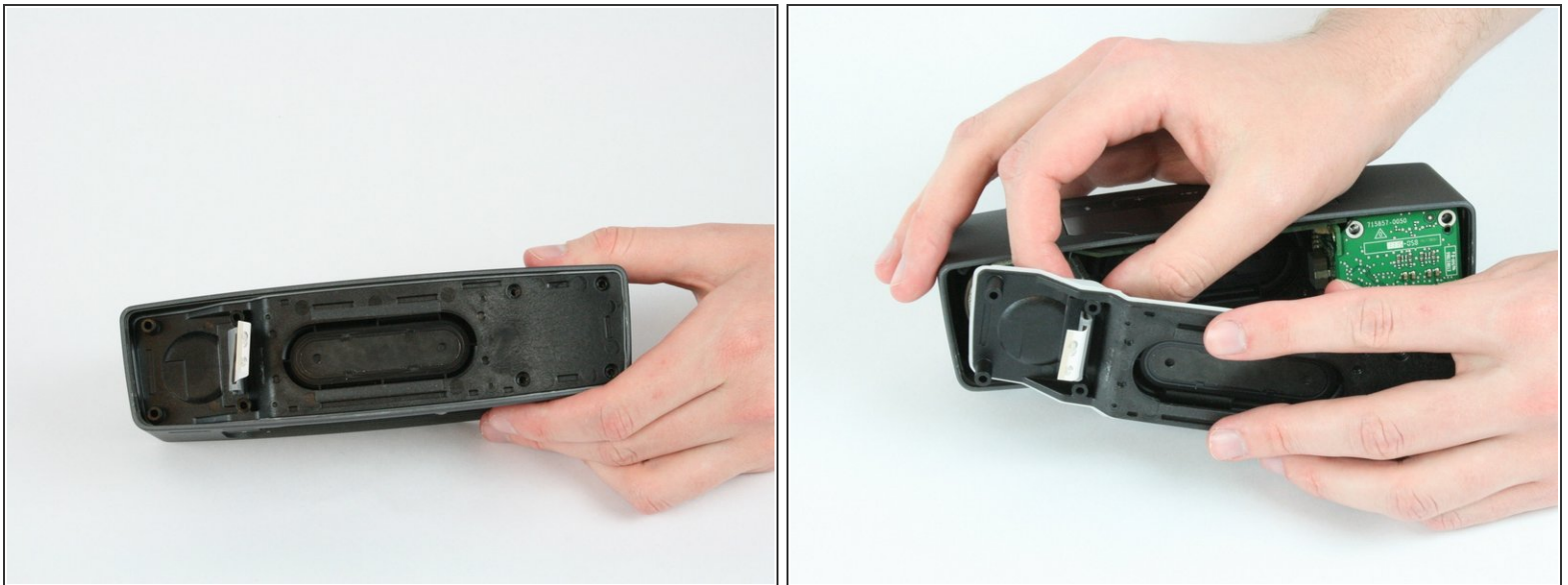
⚠ The grille bends and deforms easily.

Step 7



- Remove the eight 9mm T9 Torx screws from the circuit board and back panel.
- Use a metal spudger to release the ribbon cable connector and remove cable from the audio/USB board.

Step 8 — Button Board



- Pull the ribbon cable through the rear panel.

Step 9

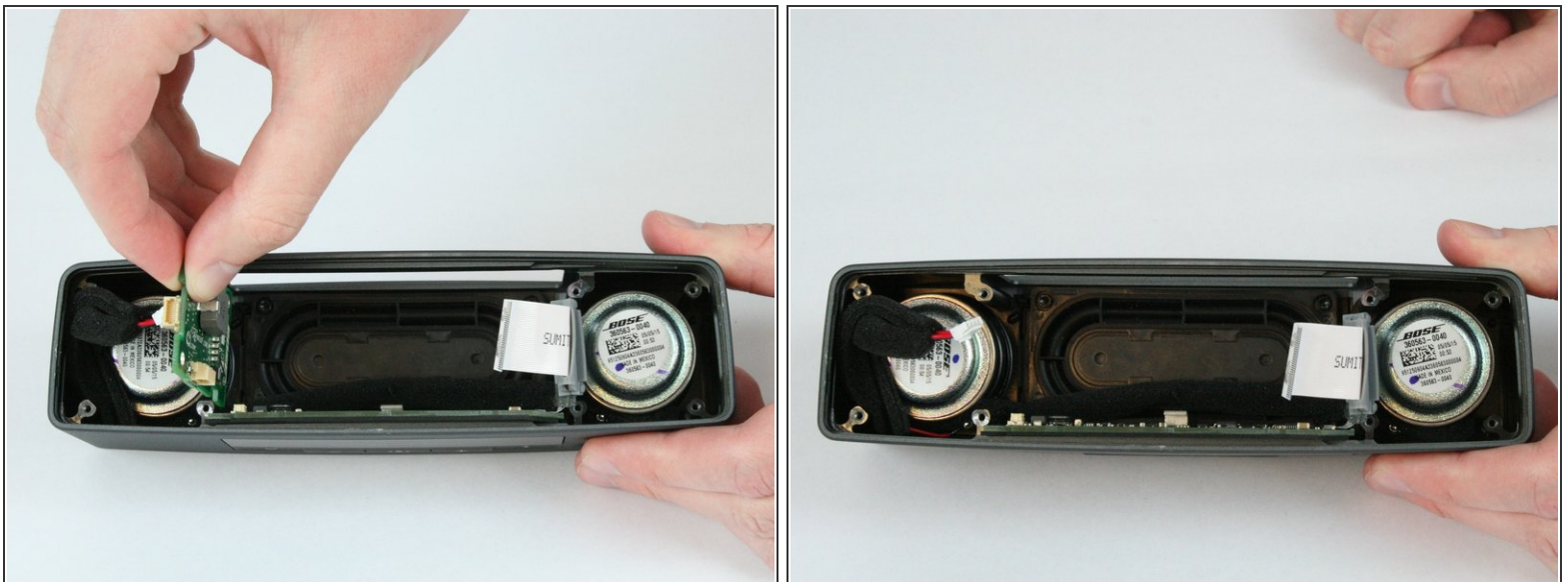


- Remove the top circuit board by lifting up.

⚠ There is a non latched connector connecting the top board to side board. Be careful to not damage this connector during the removal process.

- Disconnect the wired pair from the board upon removal.

Step 10



- Remove the side board by sliding outward from the device.

⚠ There is a non latched connector connecting the side board to button board. Be careful to not damage this connector during the removal process.

Step 11



- Remove the button board by sliding it out gently.

To reassemble your device, follow these instructions in reverse order.