



Bose SoundLink Mini II Speaker Replacement

This guide will show you how to remove and replace the speakers in the Bose SoundLink Mini II.

Written By: Tyler Roessler



INTRODUCTION

In this guide we will be disassembling the whole device to replace the speaker. It is very important to keep track of all the components and screws while following these instructions.

Note: This procedure requires removing and reinstalling the battery, which requires the use of a [soldering iron](#) and/or a lot of careful disassembly.



TOOLS:

- [64 Bit Driver Kit](#) (1)
 - [T9 Torx Screwdriver](#) (1)
 - [Metal Spudger](#) (1)
 - [Soldering Iron](#) (1)
 - [Desoldering Braid](#) (1)
 - [Solder](#) (1)
-

Step 1 — Battery



- Flip the speaker over onto its back.

Step 2



- Gently remove the rubber base from speaker by pulling around the edges.

Step 3



- Remove the four 6mm T9 Torx bit screws from the corners of the battery.

Step 4



- Carefully lift the battery from the side nearest the four gold contact pins, but don't try to fully remove it yet.
 - ⓘ At this point, the battery remains connected via two wires to the power supply board.
- Carefully desolder the two wires from the power supply board in order to completely detach the battery.
 - For help with soldering, see the [soldering guide](#).
- ⓘ Alternatively, you may remove the battery and power supply board together, without any soldering, but access requires some [additional disassembly](#) while carefully leaving the battery connected via the two wires the entire time.

Step 5 — Speaker



- Removing the device front grille with a metal spudger, starting in one corner and working around the border.

⚠ The grille is easily bent and deformed.

Step 6



- Remove the rear grille with a metal spudger, starting in one corner and working around the border.

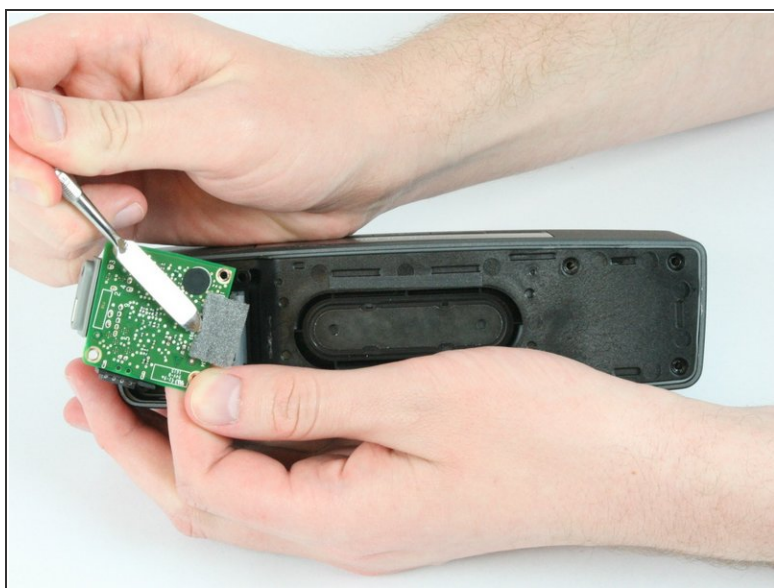
⚠ The grille is easily bent and deformed.

Step 7



- Remove the eight 9mm T9 screws.

Step 8



- Use the metal spudger to release ribbon cable retainer.
- Detach the ribbon cable from the circuit board by sliding out from board connector.

Step 9



- Pull the ribbon cable through the rear case wall.

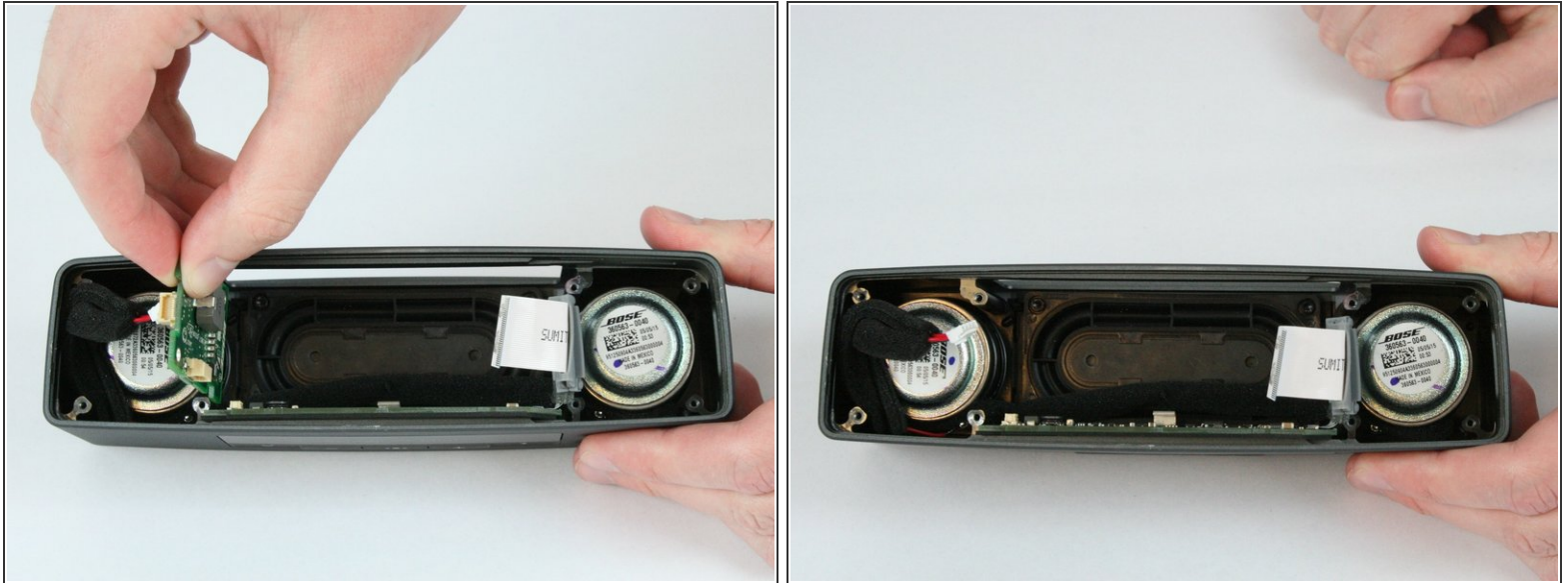
Step 10



- Remove the top circuit board by lifting up.
- Disconnect the wired pair from board upon removal.


⚠ There is a non latched connector connecting the top board to side board. Be careful to not damage this connector during the removal process.

Step 11



- Remove the power supply board by sliding it outward from the device.

 This is the board that was previously soldered to the battery.

 There is a non latched connector connecting the side board to button board. Be careful to not damage this connector during the removal process.

Step 12



- Remove the eight 9mm T9 Torx screws from the front of the device.

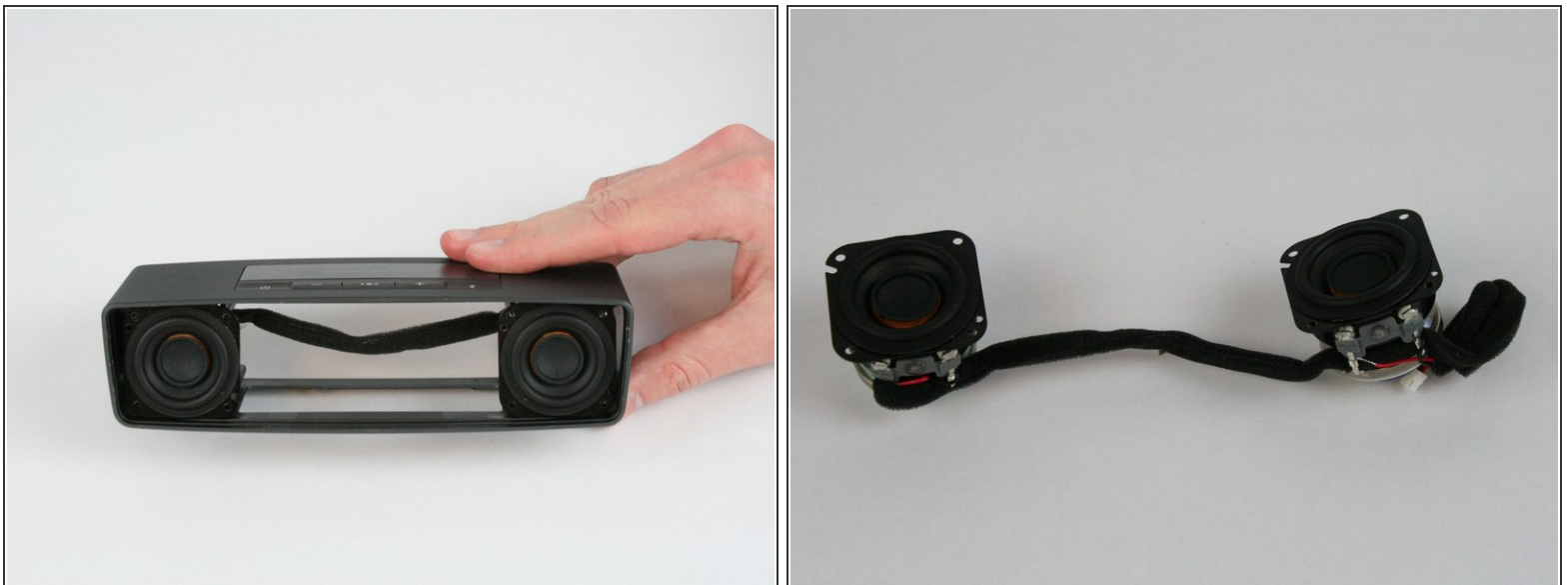
This document was generated on 2020-01-07 03:17:08 AM (MST).

Step 13



- Use the metal spudger to remove the front case panel.

Step 14



- Remove the speakers from the case.

To reassemble your device, follow these instructions in reverse order.