



Bose SoundLink Mini Speakers Replacement

Guide to replacing the speakers on the Bose SoundLink Mini

Written By: Jordan Smith



INTRODUCTION

If you need to replace the speakers of your Bose SoundLink Mini, follow this guide. The speakers are the main components in this device, and after time or bad wiring connection they may become unresponsive and need to be replaced. They are located deep within the body of the device and a several other parts will be needed to be removed before the two speakers can be accessed. Make sure you have all the necessary tools and follow all prerequisite guides in order to replace the two speaker parts.

TOOLS:

- [Metal Spudger](#) (1)
 - [T8 Torx Screwdriver](#) (1)
-

Step 1 — Battery



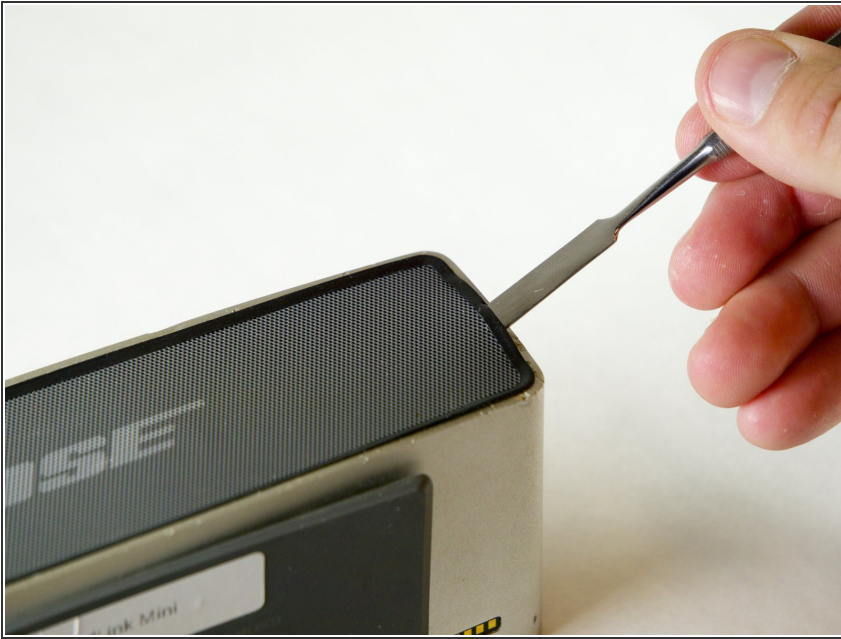
- Peel back the rubber battery cover and remove the four circled 6.0 mm screws using a T8 Torx Screwdriver.

Step 2



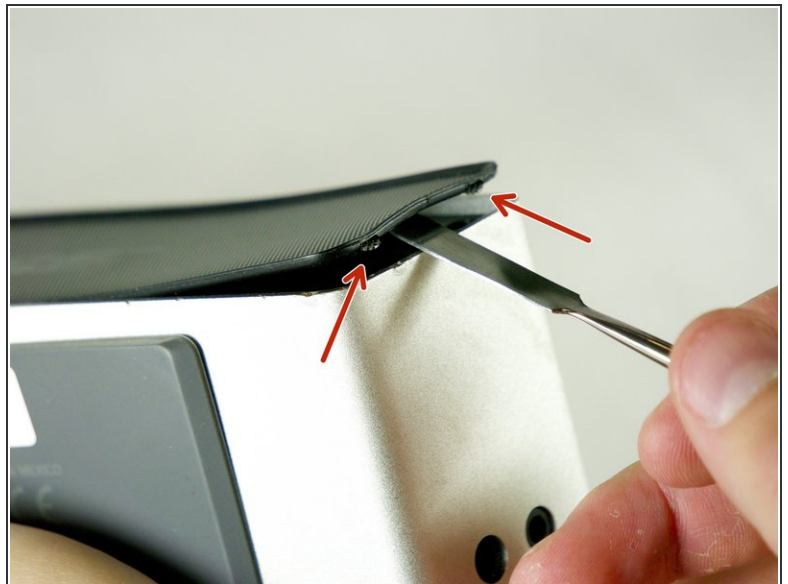
- While holding the cover back, pull straight up on the battery to remove it.

Step 3 — Front/Back Protective Grille



- Insert the Metal Spudger between the rubber edge on the grille and the aluminum casing.
- ⓘ Place Metal Spudger in the location shown.

Step 4



- Slowly pry up the grille until the two tabs shown pop out.

⚠ Be very gentle, the grille will bend.

Step 5



- The grille is attached to the speaker with double sided sticky tape. To remove the grill gently pull upward while keeping tension to the right.

⚠ Be very gentle, the grille will bend.

Step 6



- Repeat steps to remove the back grille.

Step 7 — Battery Cover



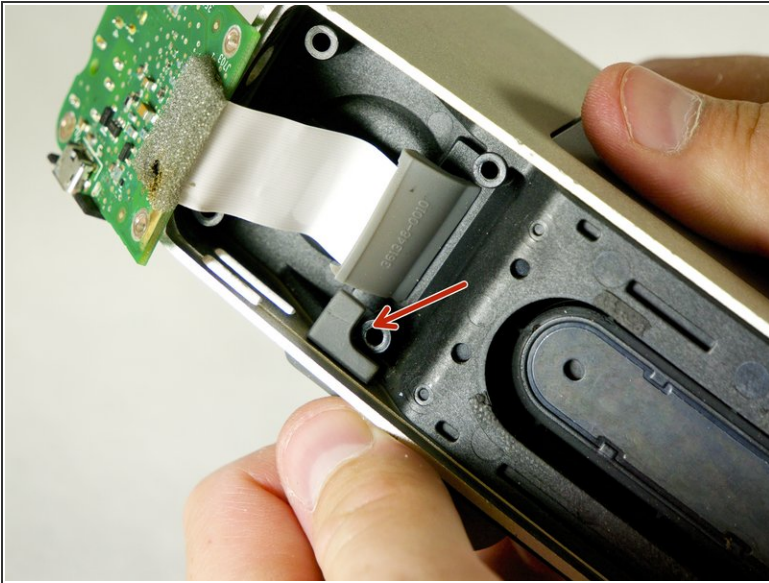
- Remove the four 15.0 mm screws on the left and the four 9.0 mm screws on the right using the T8 Torx Screwdriver.

Step 8



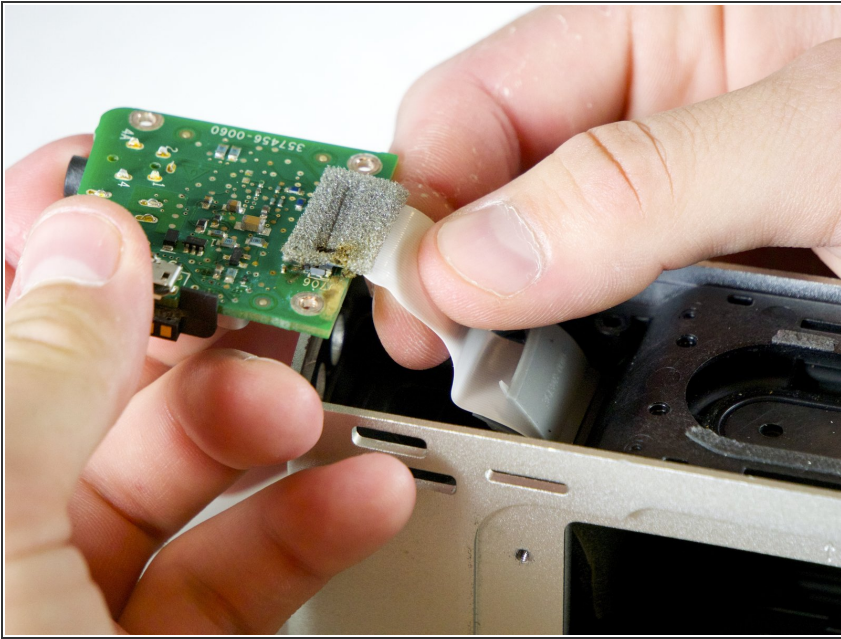
- Remove the circuit board by pushing it with your index finger in the direction shown while using a nylon or metal spudger to lift it up and out of place.

Step 9



- Carefully pull on the battery cover until the rubber tab slides out of the aluminum casing.

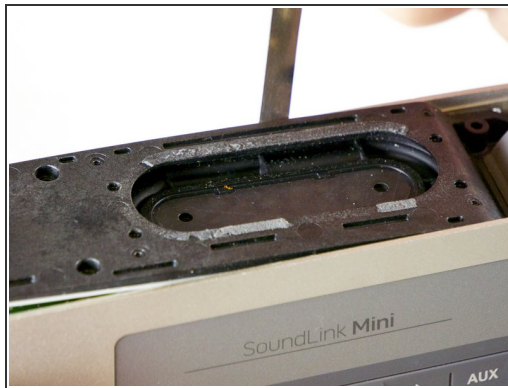
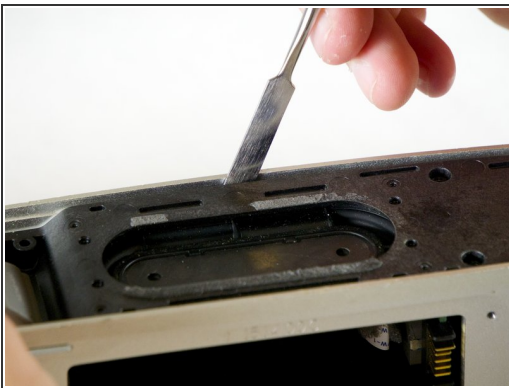
Step 10 — Button Switch Circuit Board



- Remove the sponge (save for later replacement) and gently flip the black tab 90 degrees to release the connectors grip on the ribbon cable. Remove the ribbon cable from the connector.

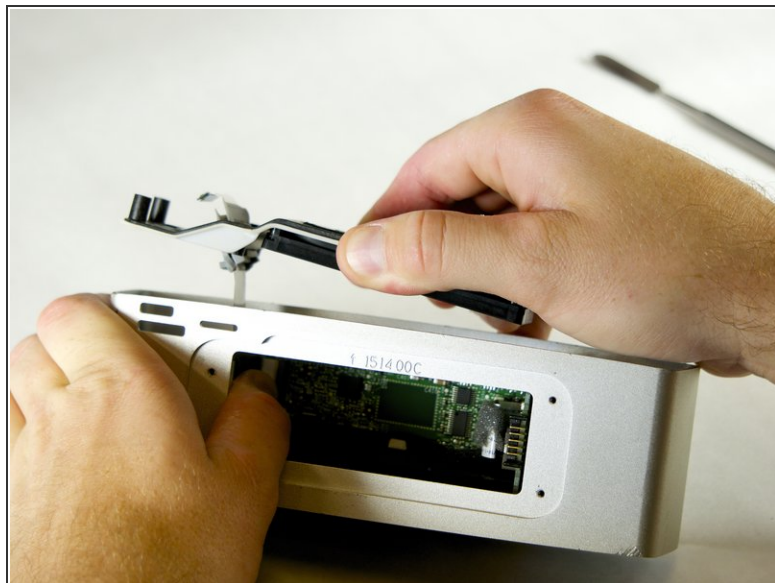
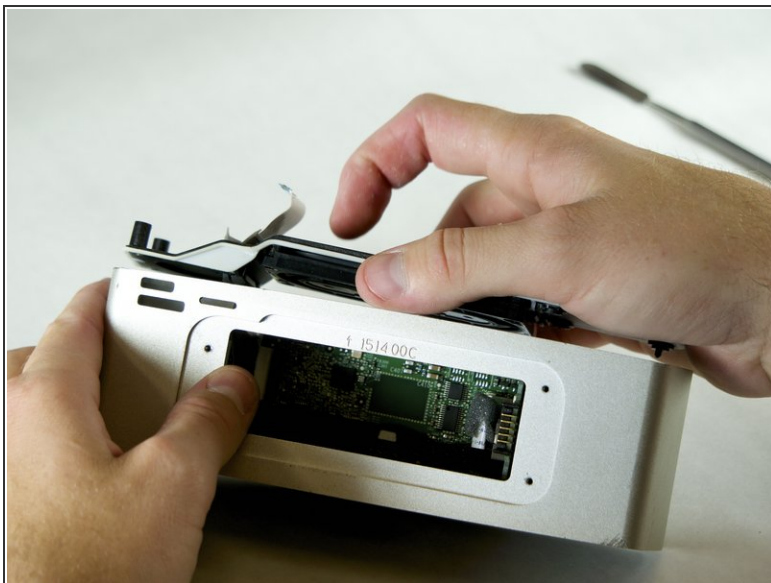
★ The black tab must be flipped up in order to reinsert the ribbon cable on reassembly.

Step 11



- Use a Metal Spudger to pry up the plastic divider.

Step 12



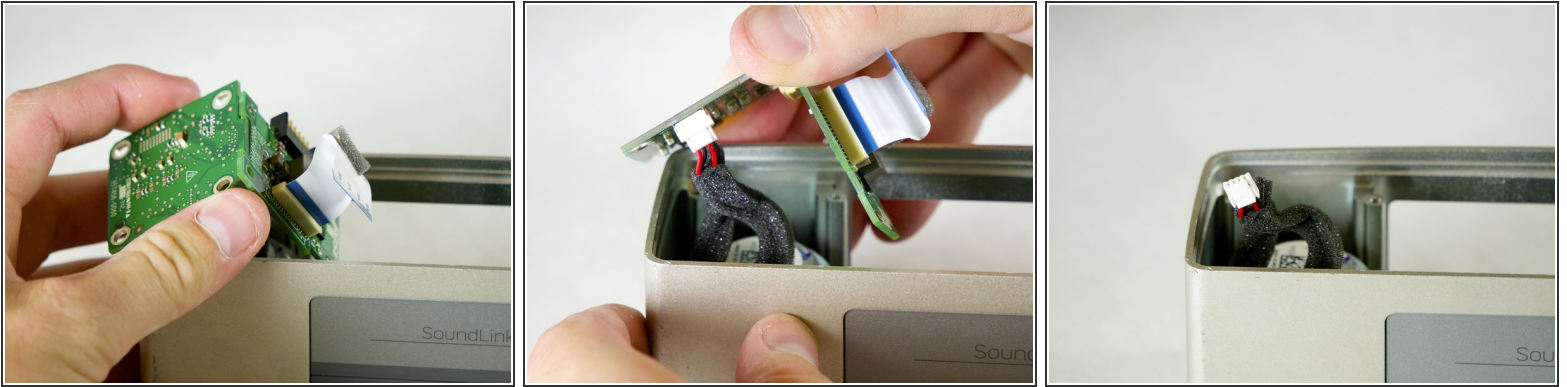
- When removing the plastic divider be careful not to damage the wire strip sliding through it.

Step 13



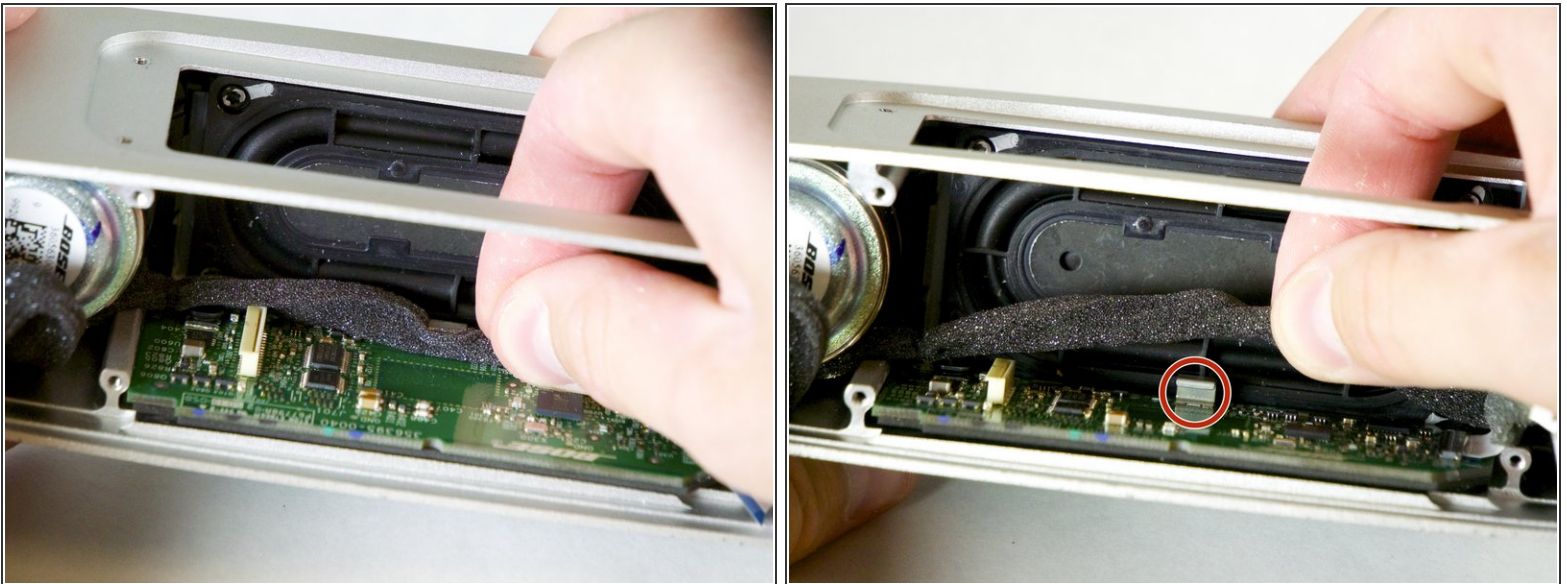
- Reach through the battery compartment hole and unplug the power strip shown.

Step 14



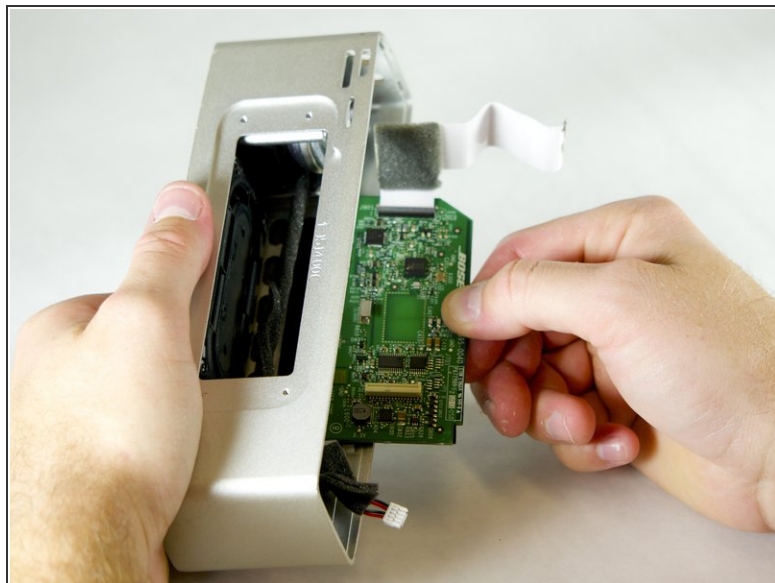
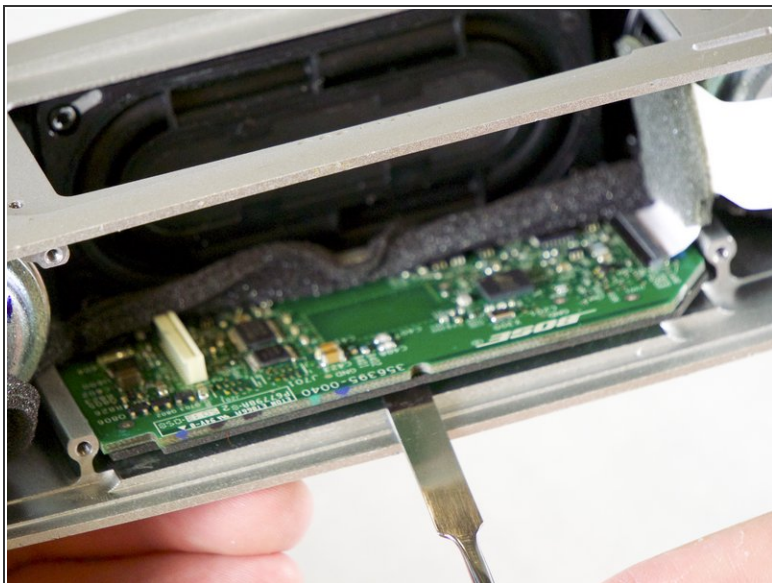
- Remove both circuit boards by wiggling them up and out of the casing.
- Unplug the speaker wires connected and fully remove both circuit boards.
- ⓘ When unplugging the speaker wires, squeeze the white connector piece to release the wires.

Step 15



- Unhook the speaker wires clipped onto the button switch circuit board.

Step 16



- Use a nylon or metal spudger to slightly lift up on the button switch circuit board.
- Pull the button switch circuit board straight out from the casing.

Step 17 — Speakers



- Remove the eight 9.0 mm screws using the T8 Torx Screwdriver.

Step 18



- Using a nylon or metal spudger, pry up the plastic divider and remove it.

Step 19



- Gently lift the speakers up and out of the casing.

To reassemble your device, follow these instructions in reverse order.