



Bose SoundTouch 10 Speaker/Driver Replacement

If the audio from your SoundTouch 10 is muffled, distorted, or completely silent, you may need to replace the speaker entirely.

Written By: James Asbury



INTRODUCTION

If the audio from your SoundTouch 10 is muffled, distorted, or completely silent, you may need to replace the speaker entirely. Be careful when handling the motherboard as it contains capacitors which may hold a charge even while the speaker is unplugged.



TOOLS:

- [Phillips #2 Screwdriver](#) (1)
 - [iFixit Opening Tools](#) (1)
 - [Phillips #0 Screwdriver](#) (1)
 - [Metal Spudger](#) (1)
 - [ESD Safe Tweezers Blunt Nose](#) (1)
-

Step 1 — Front Panel



- Turn the speaker over so that the rubber strips along the bottom are facing you.
- Use the iFixit Opening Tool to peel back the rubber strip on the bottom-front edge.

Step 2



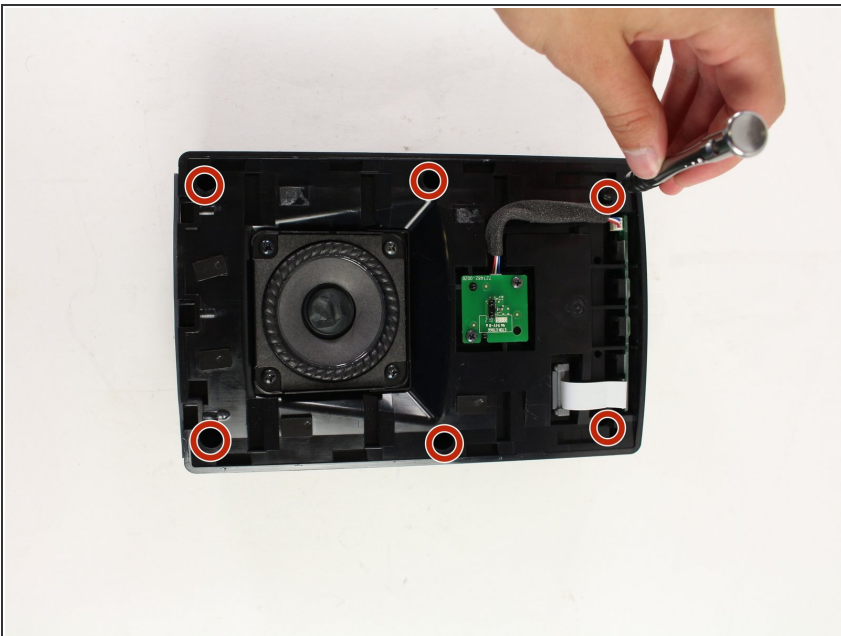
- Use a #2 Phillips screwdriver to remove each of the three 20mm screws on the bottom front edge of the speaker.

Step 3



- Slide the front panel with the mesh covering downwards to disconnect it from the SoundTouch 10 body.
- Lift the panel away to reveal the speaker head.

Step 4 — Back panel



- Use a #2 Phillips screwdriver to remove each of the six 20mm screws located underneath the front panel.

Step 5



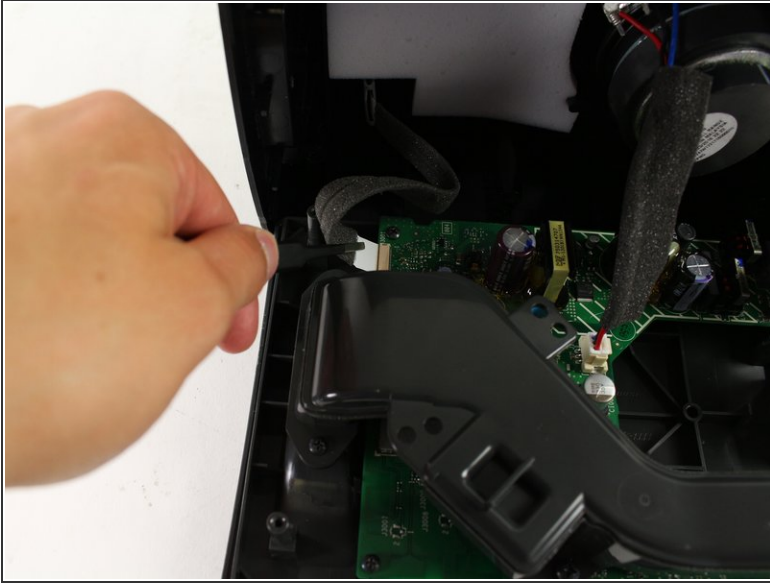
- Flip the speaker onto its back.
- Loosen the adhesive by sliding a Metal Spudger under the edge where the back panel meets the speaker's body.

Step 6



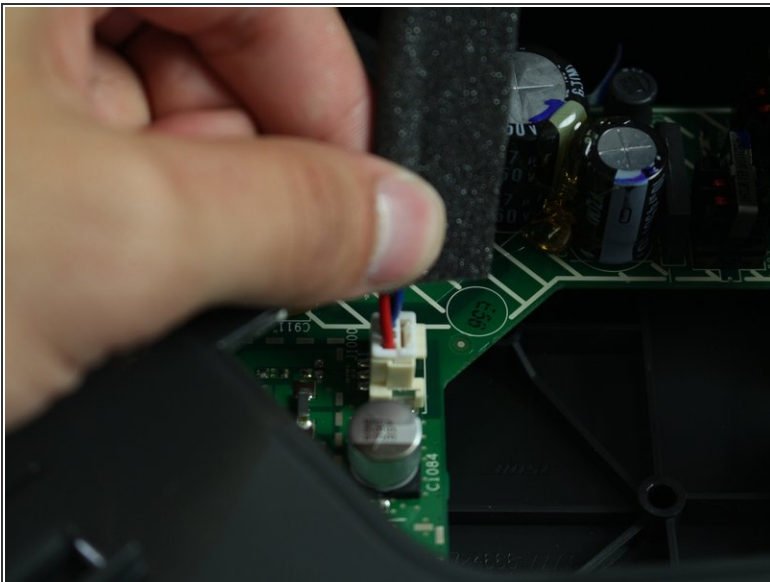
- Use force with an iFixit Plastic Opening Tool to pry the back panel up from the speaker frame.
- ⓘ If the panel does not come free easily, a heat gun may be needed to weaken the adhesive.
- ⓘ Once the panel has been disconnected, it should fall open revealing the motherboard.

Step 7



- Use ESD Safe Tweezers (Blunt Nose) to pull out the wire ribbon at the end of the motherboard.

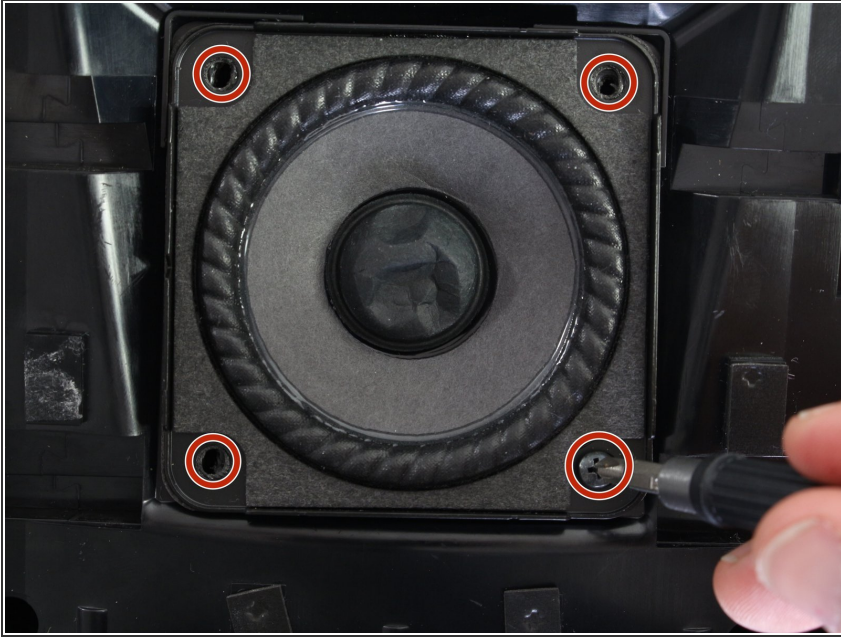
Step 8



⚠ The motherboard contains capacitors (shown as cylinders in the upper right of the picture) which can hold a charge even when the speaker is powered off. Do not touch them as doing so may result in a shock.

- Pull up on the base of the speaker wire plug to disconnect it from the motherboard.

Step 9 — Speaker/Driver



- Use a #2 Phillips screwdriver to remove each of the four 15mm screws holding the speaker in place.

Step 10



- You can now lift speaker/driver completely away from it's housing.

To reassemble your device, follow these instructions in reverse order.