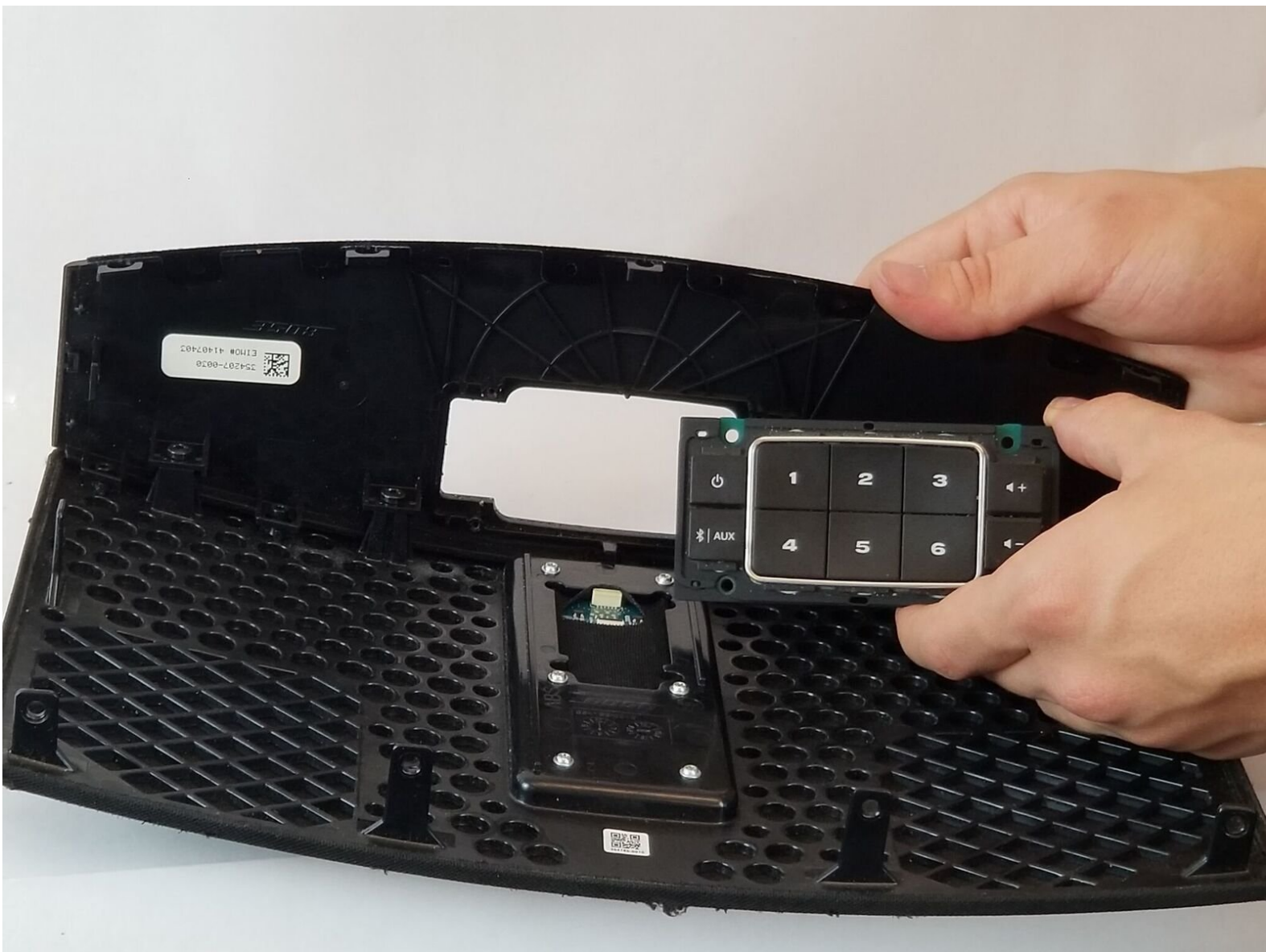




Bose SoundTouch 20 Buttons Replacement

This guide will instruct the reader how to remove buttons on top of the speaker for maintenance or replacement.

Written By: Daniel Talanga



INTRODUCTION

Use this guide to replace the top buttons on your device.



TOOLS:

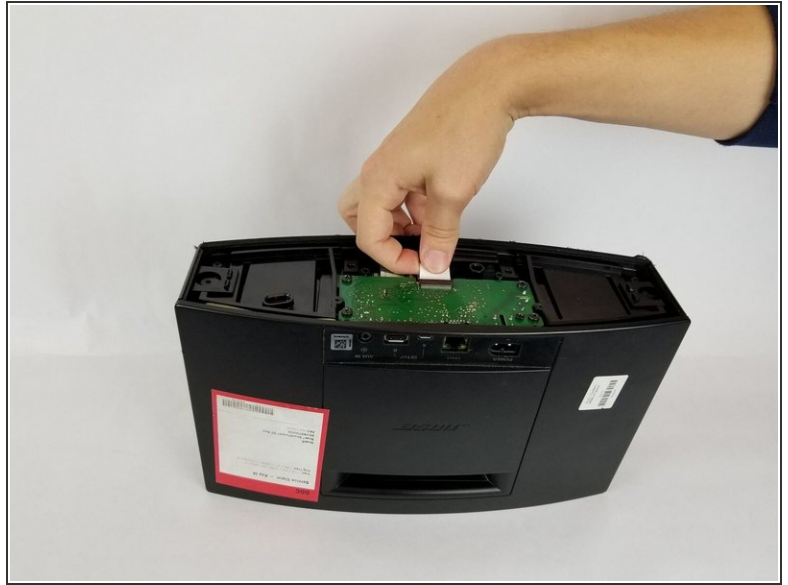
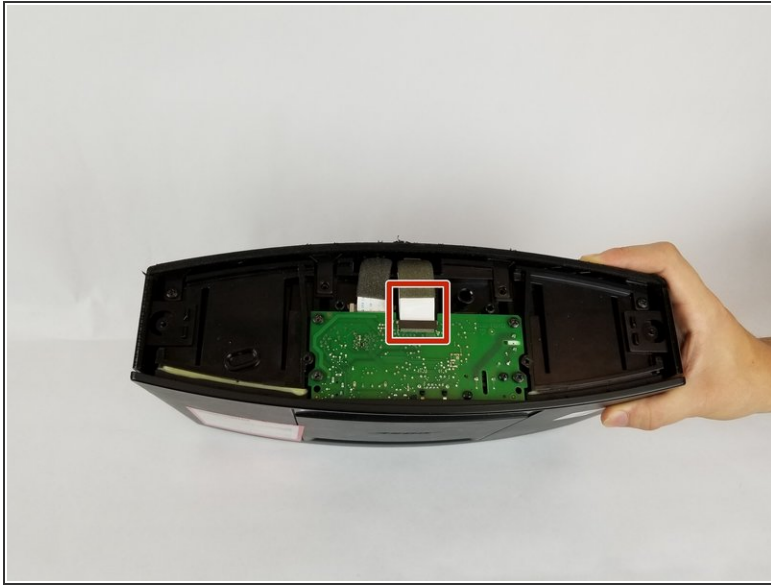
- [Phillips #0 Screwdriver](#) (1)
-

Step 1 — Buttons



- Remove the (6) six 1.5 cm Phillips screws holding on the bottom cover of the speaker using a Phillips #0 screwdriver.
- Lift the cover straight up and set the cover to the side.

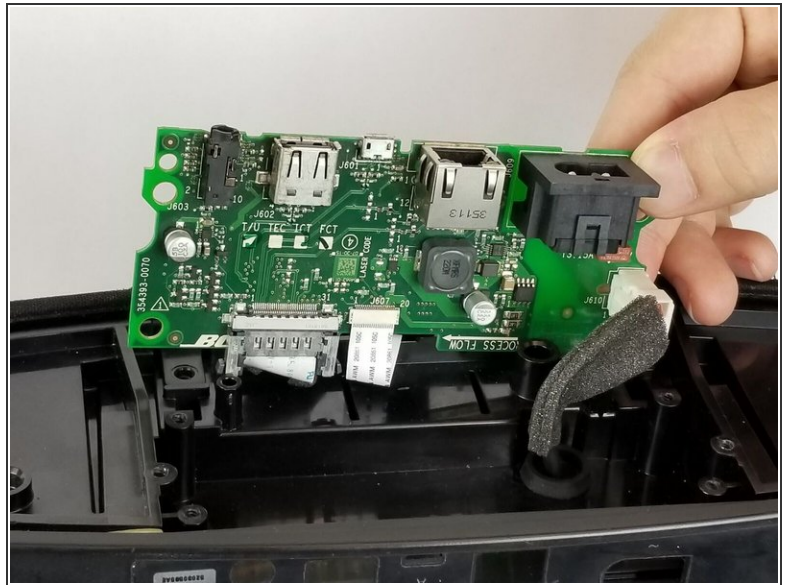
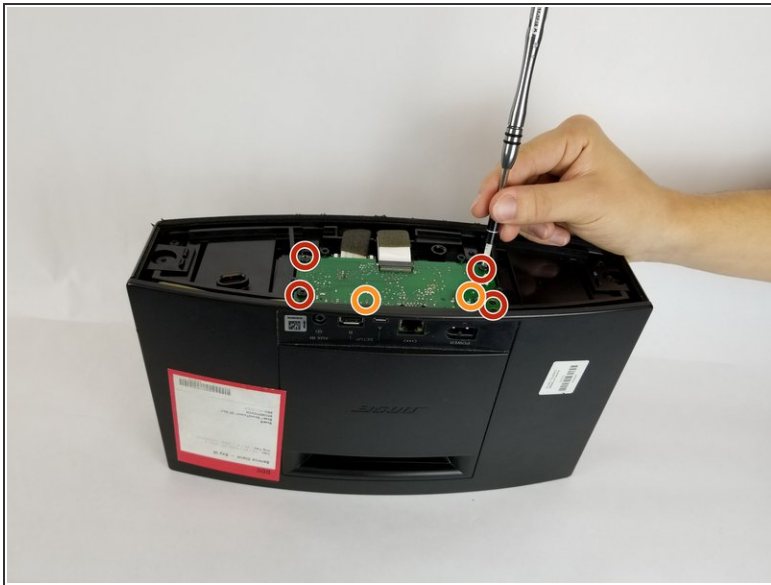
Step 2



- Gently pull the white ribbon from the connector on the top side of the motherboard.

⚠ Make sure to pull straight back so you don't bend or damage the ribbon.

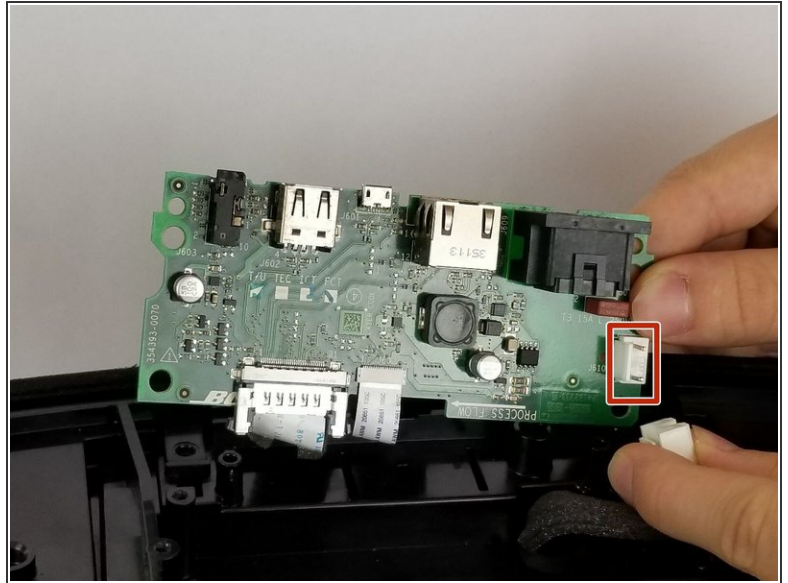
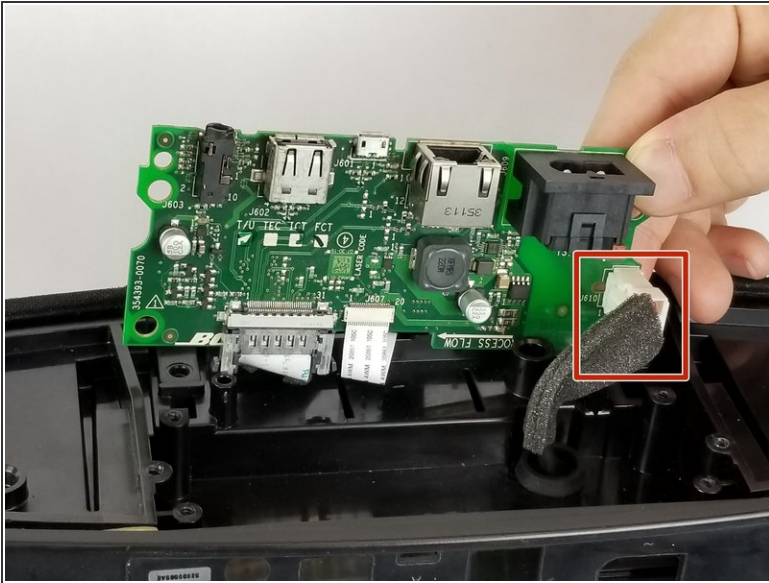
Step 3



- Remove the (4) four 1.5 cm screws connecting the motherboard to the speaker.
- Remove the (2) two 1 cm screws connecting the motherboard to the speaker.

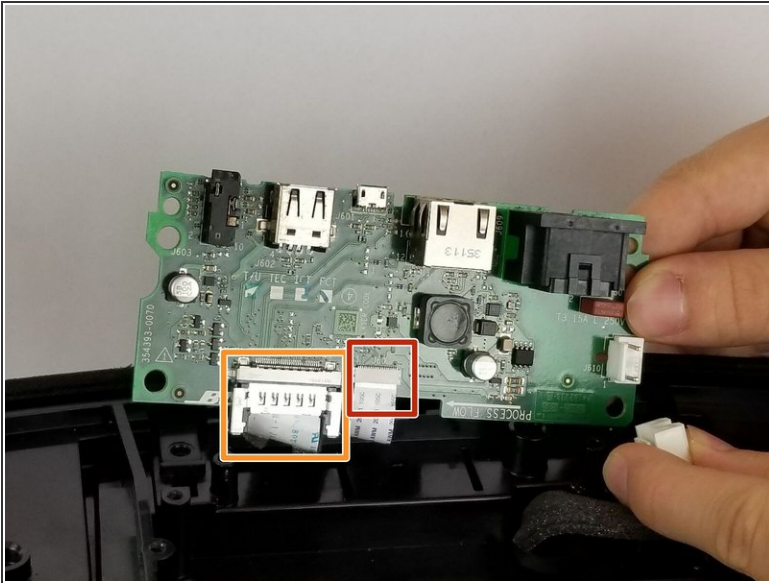
⚠ When lifting the board, be careful of the two ribbons located underneath the board. Don't lift the board straight up, instead tilt it towards the cables. As shown in picture 2.

Step 4



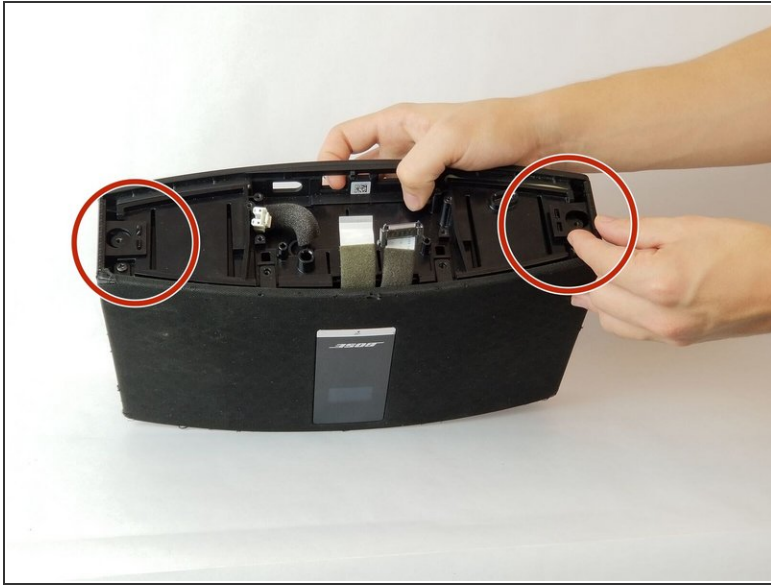
- Remove the white cable by pressing on the side of the connector with a tab and pulling backwards.

Step 5



- Gently pull the thinner white ribbon located towards the center of the board.
- ⚠ Pull straight down to prevent bending or damaging the ribbon.
- Squeeze the plastic sides of the plug and pull straight down to remove this ribbon.
- After removing the two ribbons, completely remove the motherboard and set it to the side.

Step 6



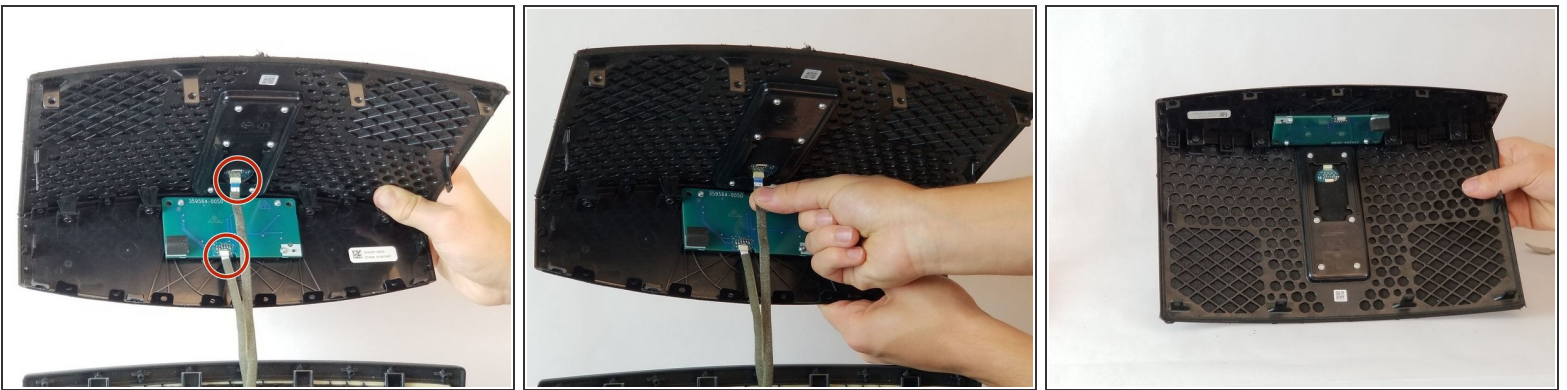
- To remove the side panel from the speaker, lift the top of the sides from the slots.
- ⓘ The sides will be bent up after removing from the slots, they do not come up right away.
- After completing the previous step, pull gently straight up to remove the side.
- Repeat on both sides of the speaker.

Step 7



- Remove the (2) two 1.5 cm screws circled in picture one.
- Rotate the speaker to its side and remove the (2) two 1.5 cm screws circled in picture 2. Remove these screws on either side of the speaker.
- After all screws are removed, gently remove the cover from the speaker as shown in picture 3.

Step 8



- After lifting the cover, you will see two ribbons attaching the cover to the speaker. Gently remove these ribbons by pulling straight down.
- ⚠ Make sure to pull the ribbons straight out so you don't bend or damage the ribbon.

Step 9



- Place the fully separated cover face down on a surface.
- Using a star bit screwdriver, remove the three screws circled in picture 1.
- Unplug the plug boxed in on picture 1.
- Gently push out the button board from the top of the cover.

To reassemble your device, follow these instructions in reverse order.