



# Bose SoundTouch Portable Metal Trim Replacement

This is a prerequisite for replacing the motherboard.

Written By: Alejandro Ruiz del Sol





## TOOLS:

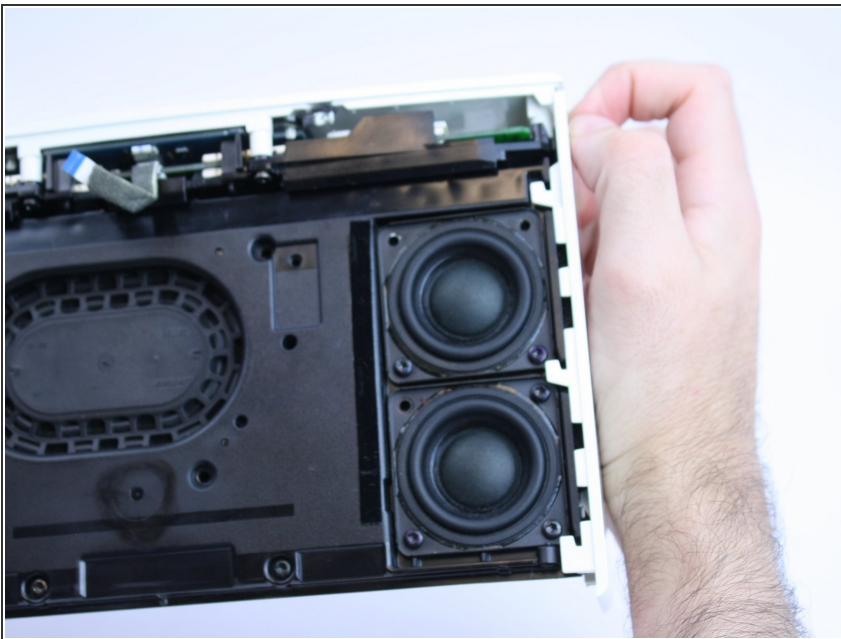
- [T10 Torx Screwdriver](#) (1)
-

## Step 1 — Metal Trim



- Remove the two screws using a torx screwdriver.

## Step 2



- With the bottom of the device facing you, pull down the trim pieces to remove from the device body.

To reassemble your device, follow these instructions in reverse order.