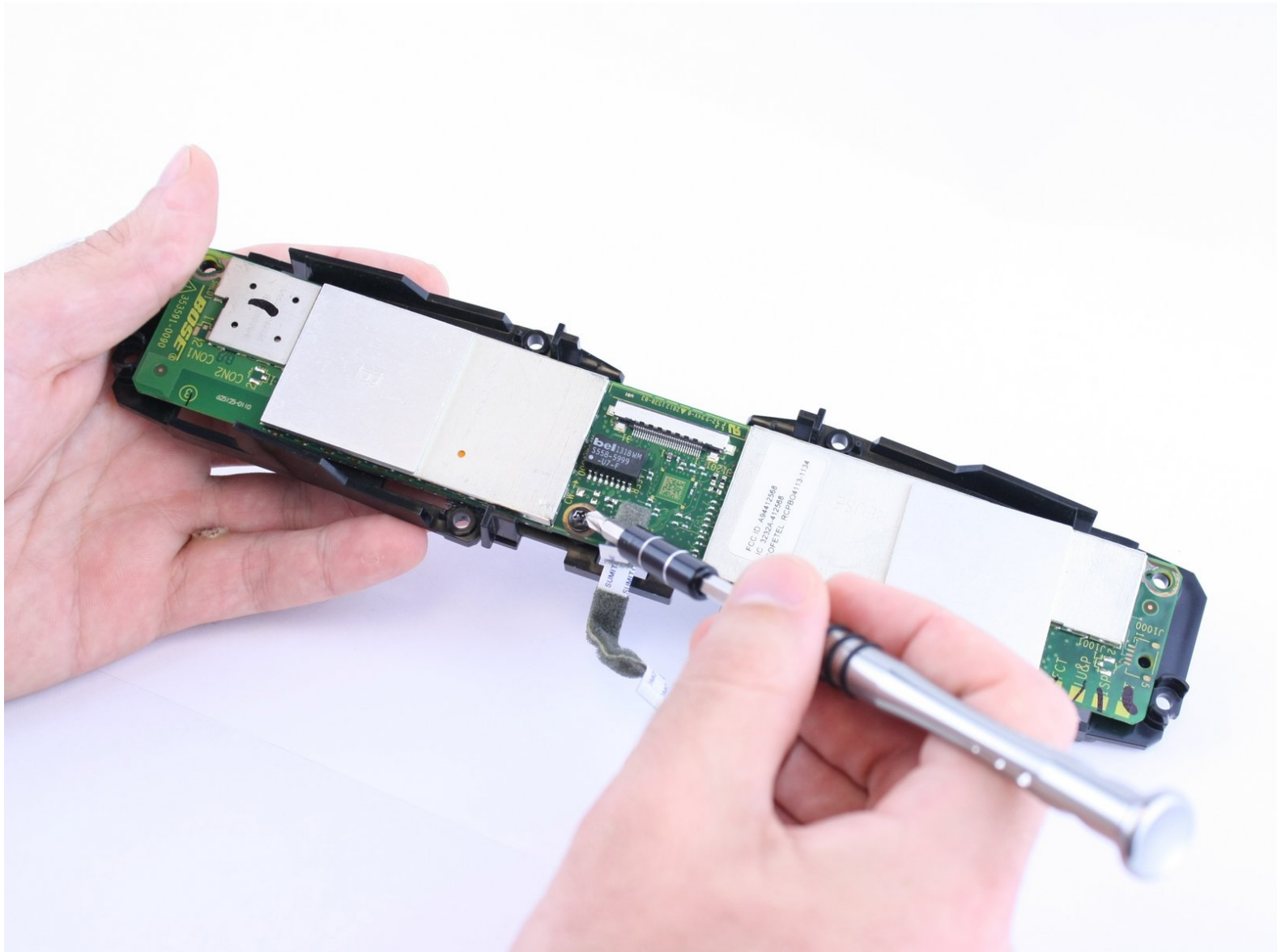




Bose SoundTouch Portable Motherboard Replacement

Replace the motherboard on your Bose SoundTouch Portable.

Written By: Chelsea Martin





TOOLS:

- [iFixit Opening Tools](#) (1)
- [Small Needle Nose Pliers](#) (1)
- [T10 Torx Screwdriver](#) (1)

Step 1 — Speaker Battery



- Remove the two T-10 machine screws at the bottom of the device.

Step 2



- Turn the device around.
- From the top, lightly push down the back cover to release it.
- Lift the bottom of the cover and pull it up.

Step 3



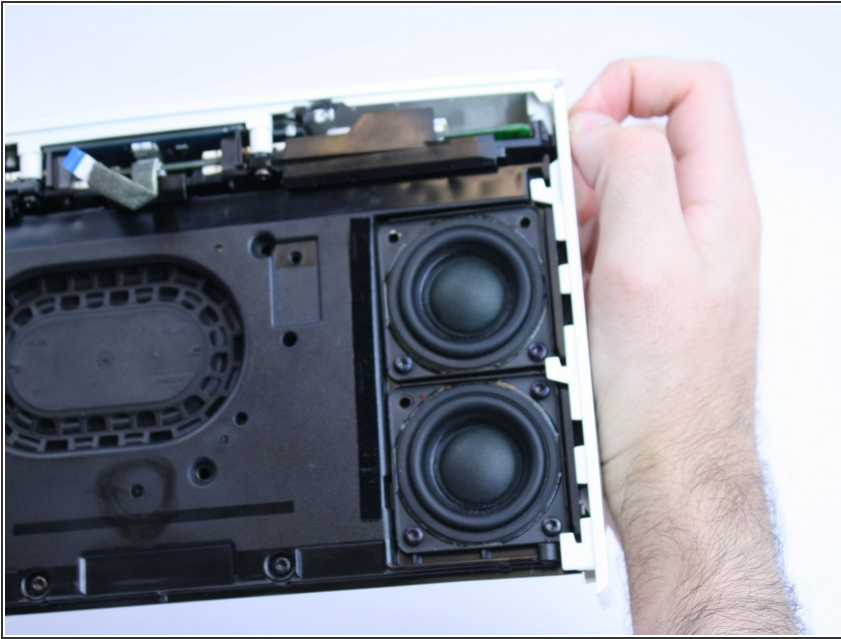
- Remove the two T-10 machine screws, then pull the battery straight out.

Step 4 — Metal Trim



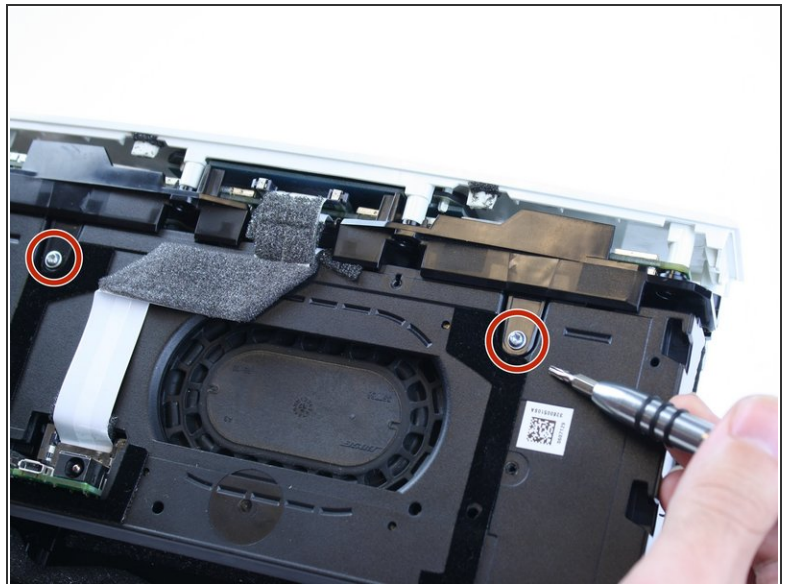
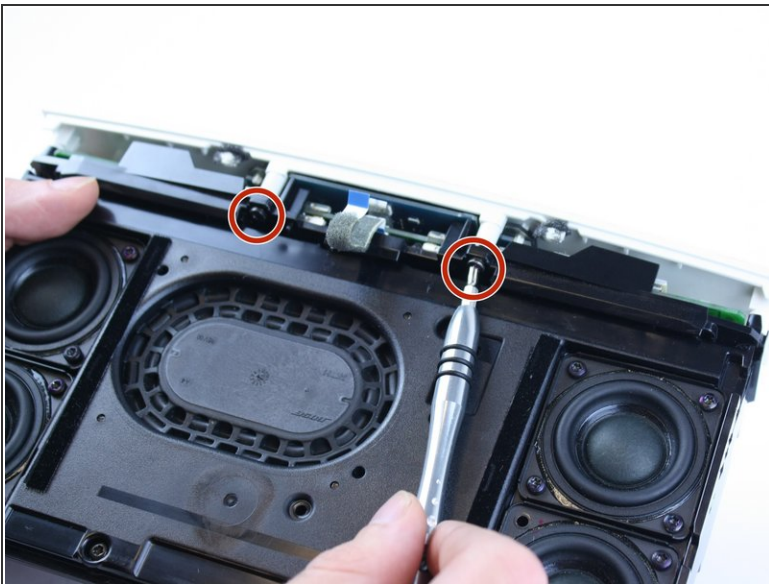
- Remove the two screws using a torx screwdriver.

Step 5



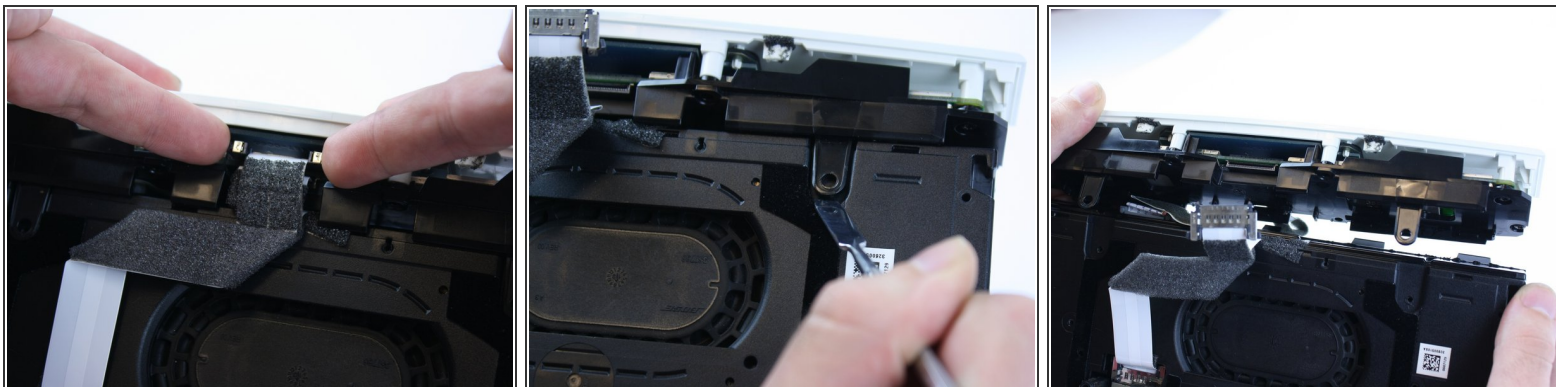
- With the bottom of the device facing you, pull down the trim pieces to remove from the device body.

Step 6 — Motherboard



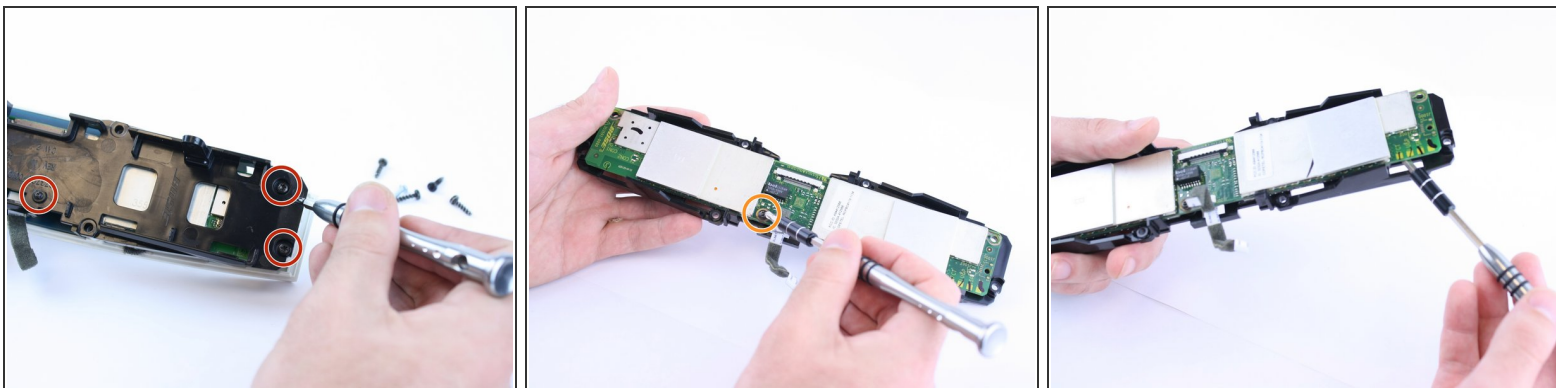
- Remove four T-10 Torx screws; there are two on the front and two on the back.

Step 7



- Pinch and remove the connectors.
- Use a flat tool to pry off the top piece.

Step 8



- Remove the four T-10 Torx screws holding the plastic cover in place.
- Remove the one T-10 Torx screw that is holding the motherboard in place.
- Pry off the motherboard.

To reassemble your device, follow these instructions in reverse order.