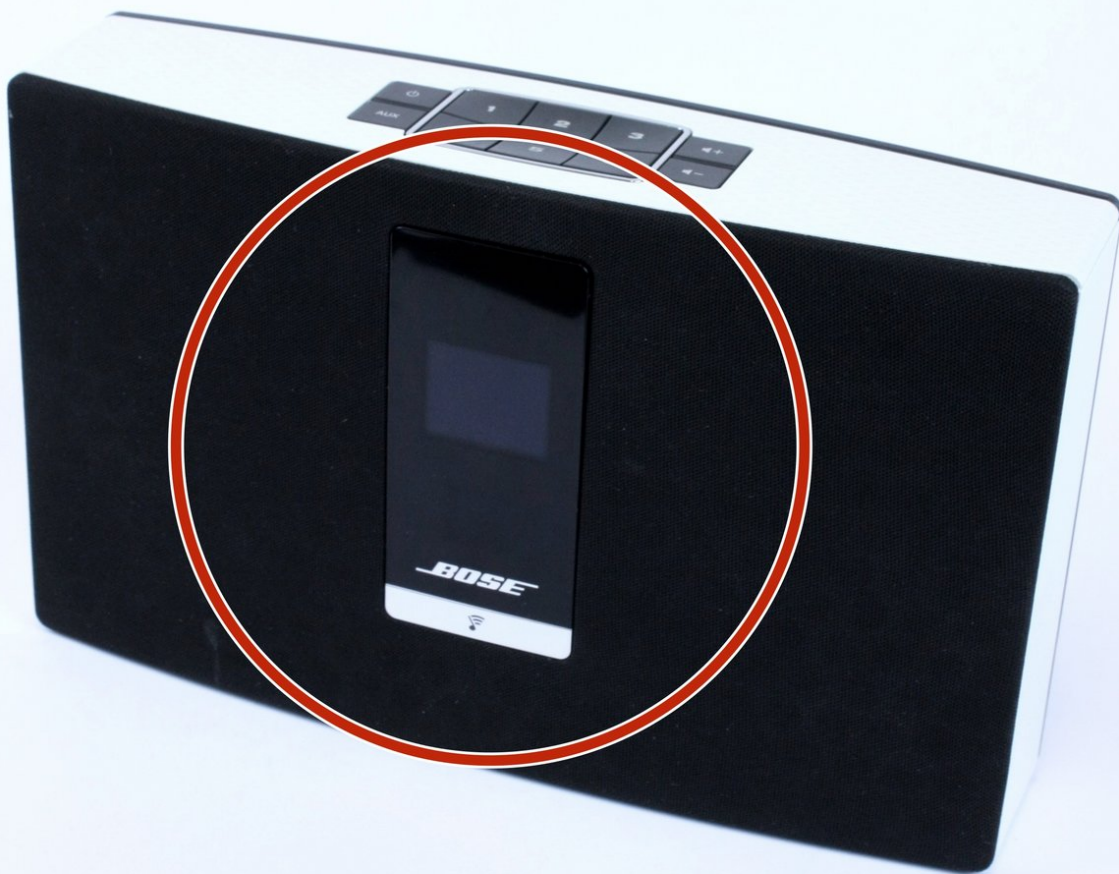




Bose SoundTouch Portable OLED Display Replacement

Replace the OLED Display on your Bose SoundTouch Portable.

Written By: Chelsea Martin



INTRODUCTION

If the OLED screen on your device breaks, then you may be able to easily replace it.



TOOLS:

- [T10 Torx Screwdriver](#) (1)
-

Step 1 — OLED Display



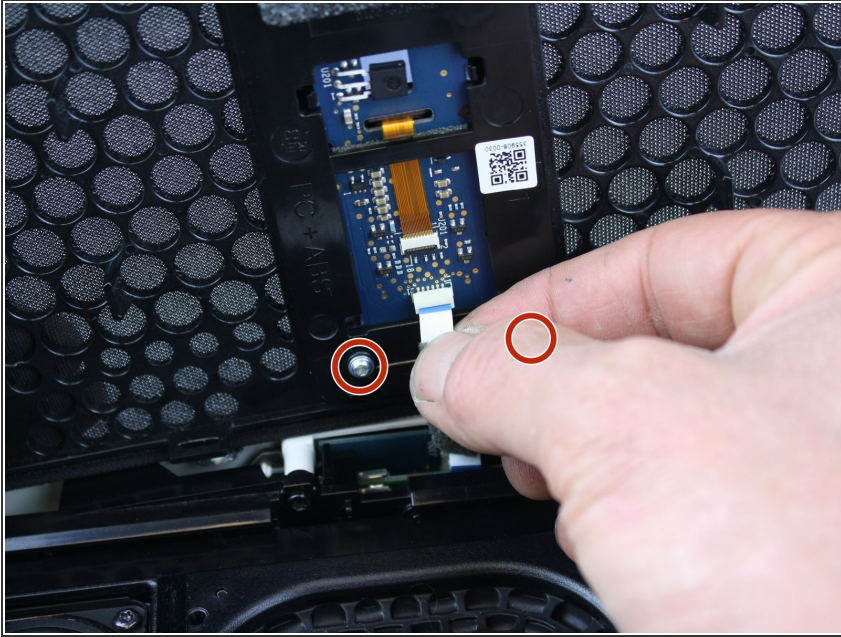
- Remove the two torx screws holding the speaker grill in place.

Step 2



- Grip the sides of the device and push the speaker grill down and out.

Step 3



- Gently release the ribbon from its connector and remove the grille.
- Remove the two silver screws from the OLED.
- Lift the OLED away from the grille.

To reassemble your device, follow these instructions in reverse order.