



Bose SoundTouch Portable Subwoofer Replacement

Replace subwoofer on your Bose SoundTouch Portable.

Written By: Chelsea Martin





TOOLS:

- [T10 Torx Screwdriver](#) (1)
- [iFixit Opening Tools](#) (1)
- [Small Needle Nose Pliers](#) (1)

Step 1 — Speaker Battery



- Remove the two T-10 machine screws at the bottom of the device.

Step 2



- Turn the device around.
- From the top, lightly push down the back cover to release it.
- Lift the bottom of the cover and pull it up.

Step 3



- Remove the two T-10 machine screws, then pull the battery straight out.

Step 4 — Grille



- Remove the two screws holding the speaker grille in place.

Step 5



- Grip the sides of the device and push the speaker grille down and out.

Step 6



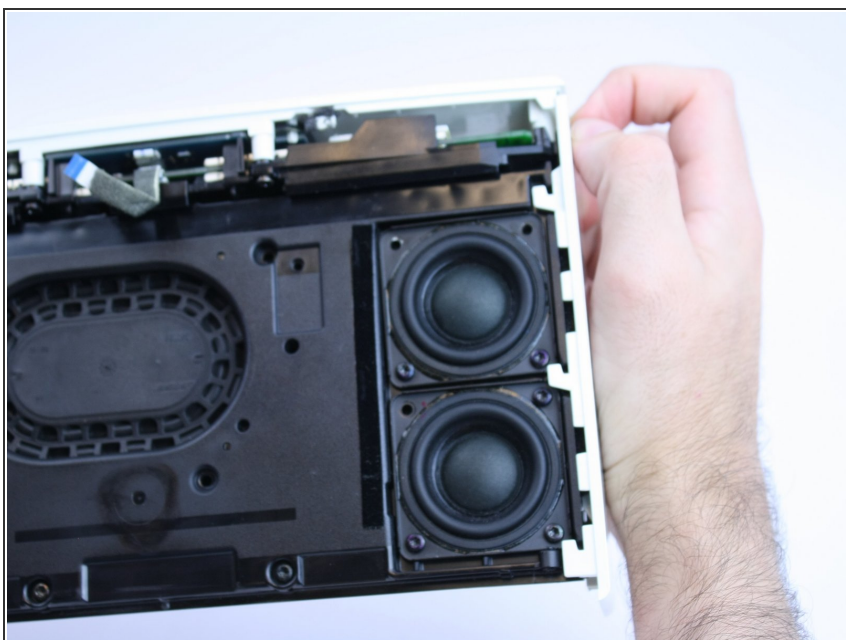
- Gently release the ribbon from its connector and remove the grille.

Step 7 — Metal Trim



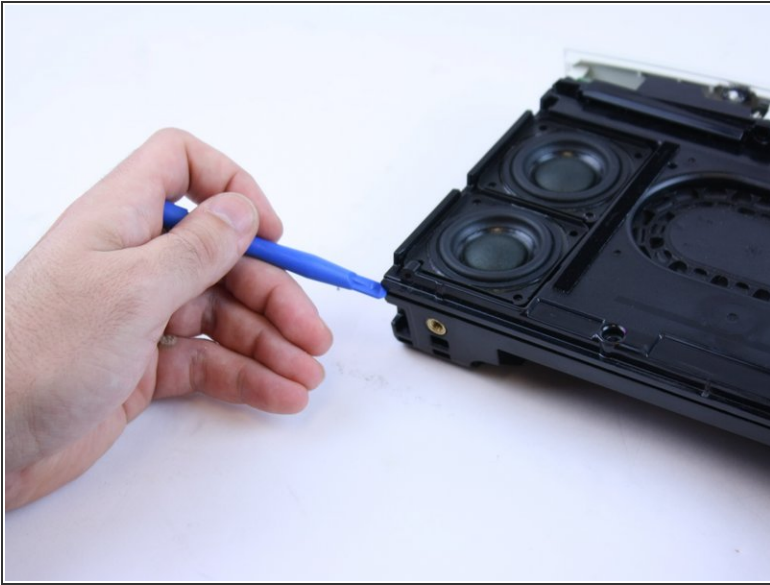
- Remove the two screws using a torx screwdriver.

Step 8



- With the bottom of the device facing you, pull down the trim pieces to remove from the device body.

Step 9 — Subwoofer



- Separate the case that holds the subwoofer in place.

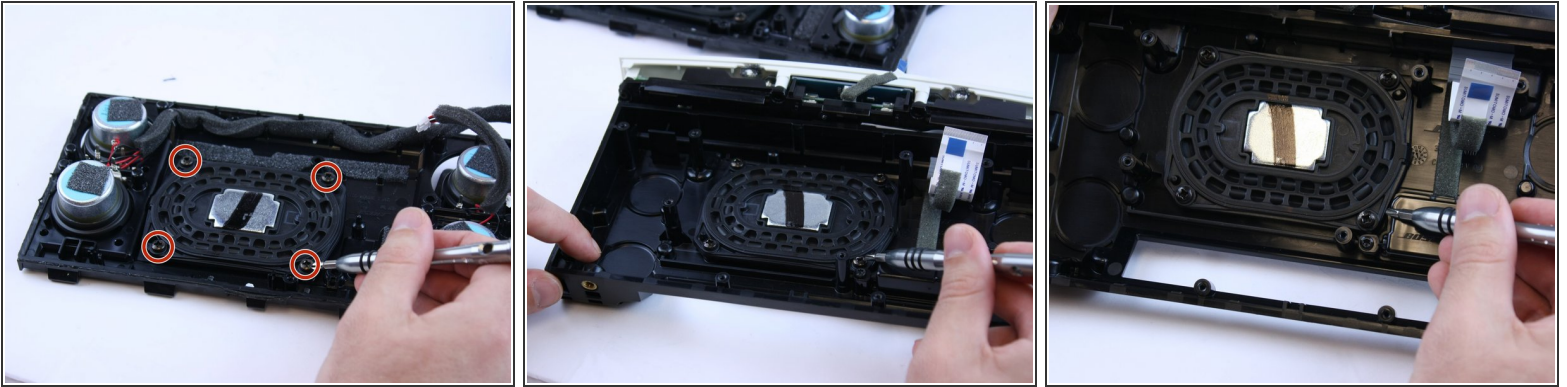
⚠ Be careful when doing this step because there are several connectors inside.

Step 10



- Gently pull on the connectors at the circuit board to remove. Remove the screws from the circuit board and set the board aside.

Step 11



- Remove the four screws from the subwoofer and lift it out of the casing.

To reassemble your device, follow these instructions in reverse order.