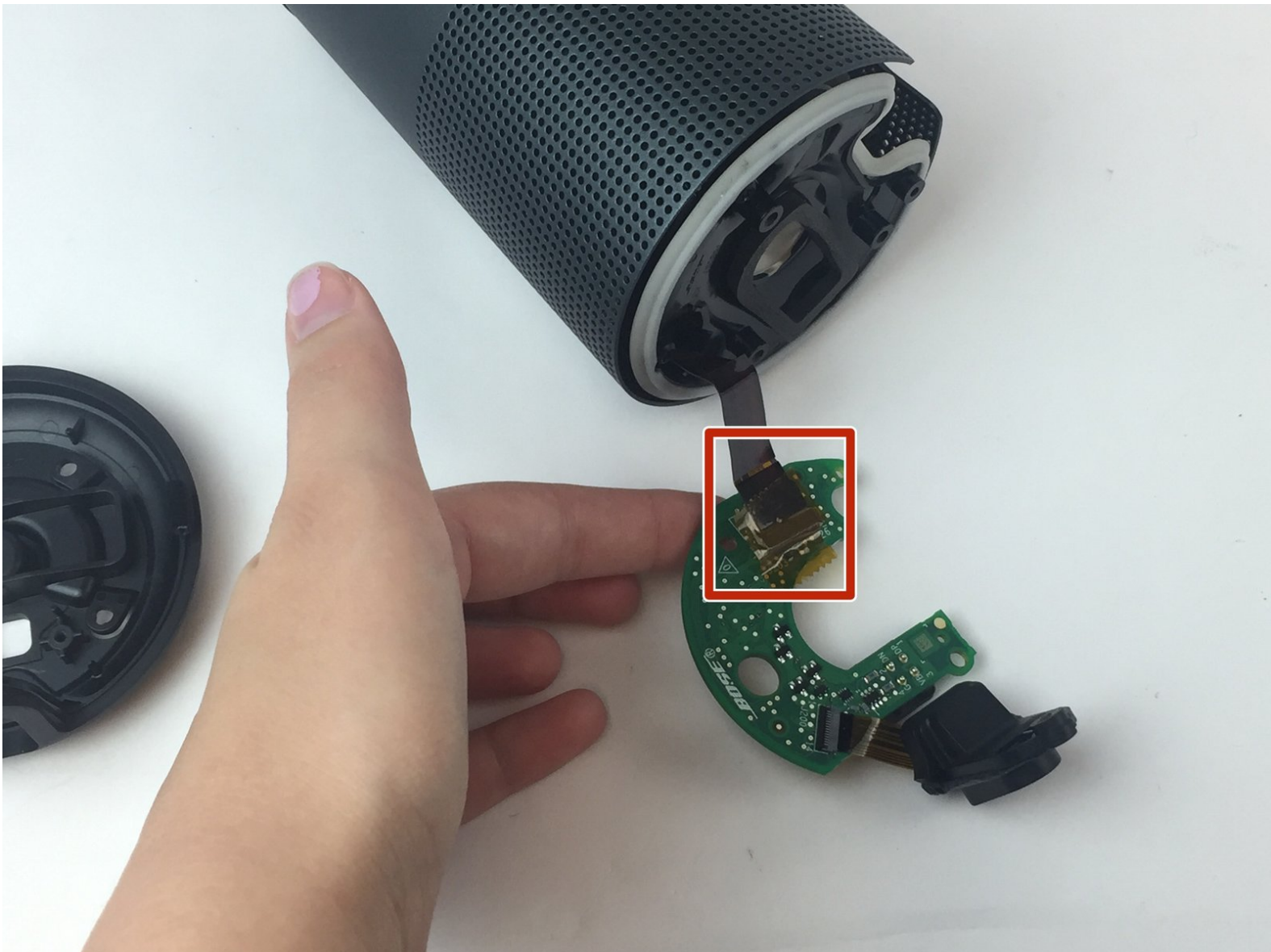




Bose Soundlink Revolve Bottom Circuit Board Replacement

This guide will tell you how to isolate and remove the bottom circuit board for the Bose Soundlink Revolve.

Written By: Brian Butner



INTRODUCTION

Use this guide to replace the bottom motherboard of your device.



TOOLS:

- [iFixit Opening Tools](#) (1)
 - [TR9 Torx Security Screwdriver](#) (1)
-

Step 1 — Bottom Circuit Board Access



- Flip speaker over so that the bottom is facing up.
- Using the blue spudger, lift the gray foam up and slowly peel it off with your hand.

Step 2



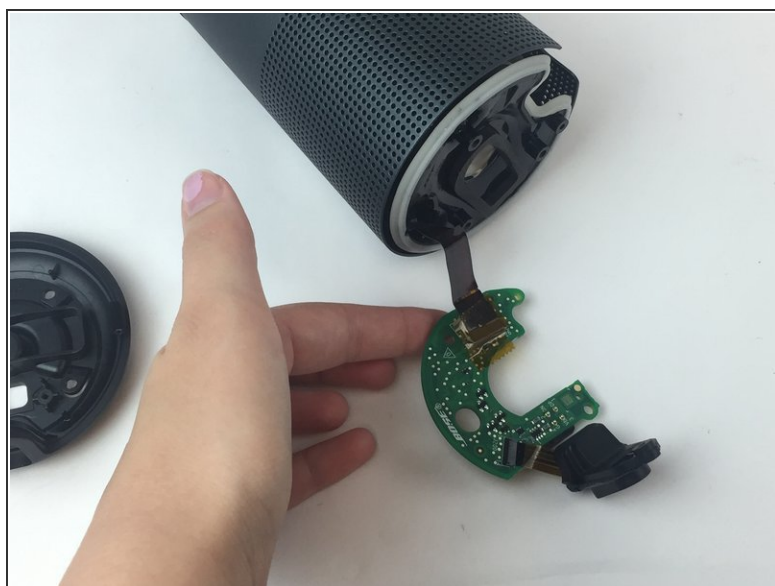
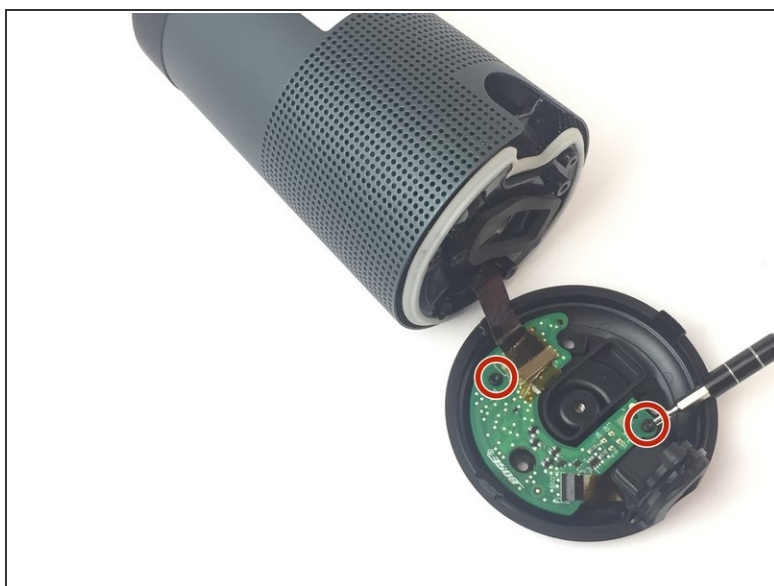
- Using the screwdriver, unscrew three screws.
- Detach the bottom cover from the rest of the speaker by pulling the two in opposite directions.

Step 3



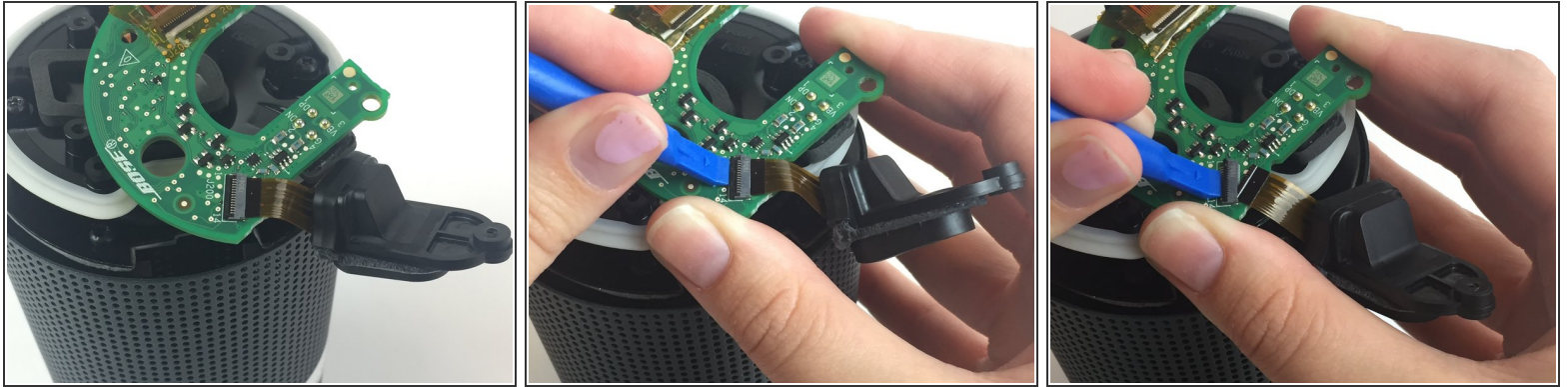
- Remove the screw that is above the charging port.

Step 4



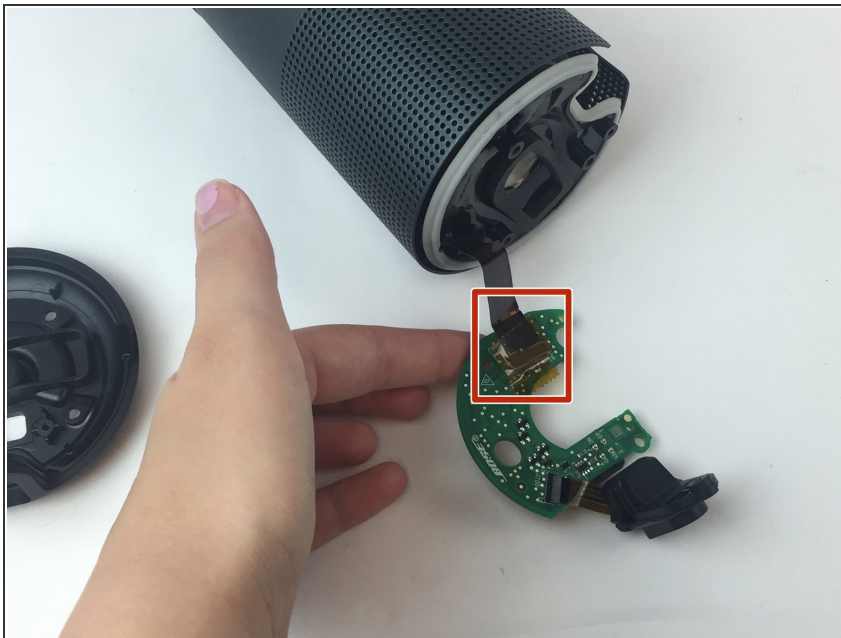
- Remove the two screws connecting the motherboard to the bottom cover of the speaker.
- Remove the bottom cover.

Step 5 — AUX/USB Port



- Using the blue plastic opening tool, pry up the small black clamp connecting the AUX/USB port to the lower circuit board.
- Remove the AUX/USB port from the device.

Step 6 — Bottom Circuit Board



- Remove the yellow tape over the location where the ribbon from the central speaker meets the bottom circuit board.
- Use the blue plastic opening tool to pry up the black latch holding down the ribbon.
- Remove the motherboard from the device.

To reassemble your device, follow these instructions in reverse order.