



Bose Soundlink Revolve Top Circuit Board Replacement

This guide will tell you how to replace the top circuit board for the Bose Soundlink Revolve. This is the one responsible for physical inputs to the device.

Written By: Brian Butner



INTRODUCTION

Use this guide to replace the top motherboard on your device.



TOOLS:

- [TR9 Torx Security Screwdriver](#) (1)
 - [iFixit Opening Tools](#) (1)
-

Step 1 — Bottom Circuit Board Access



- Flip speaker over so that the bottom is facing up.
- Using the blue spudger, lift the gray foam up and slowly peel it off with your hand.

Step 2



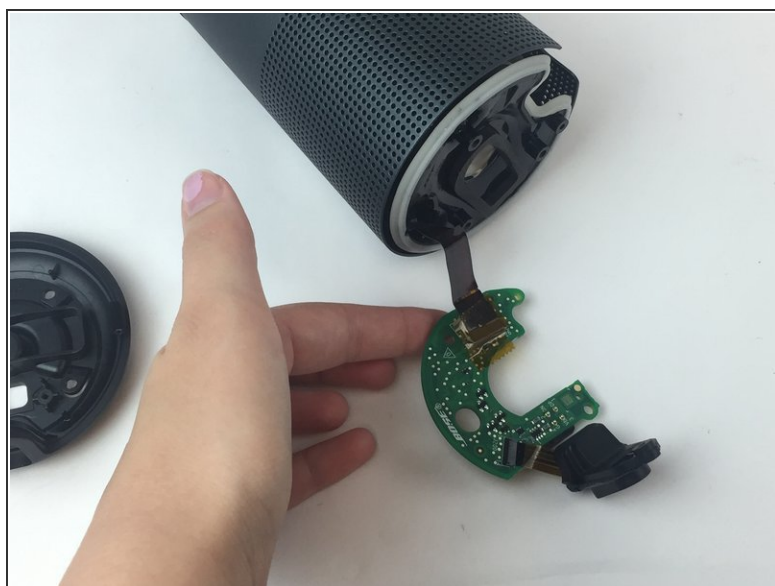
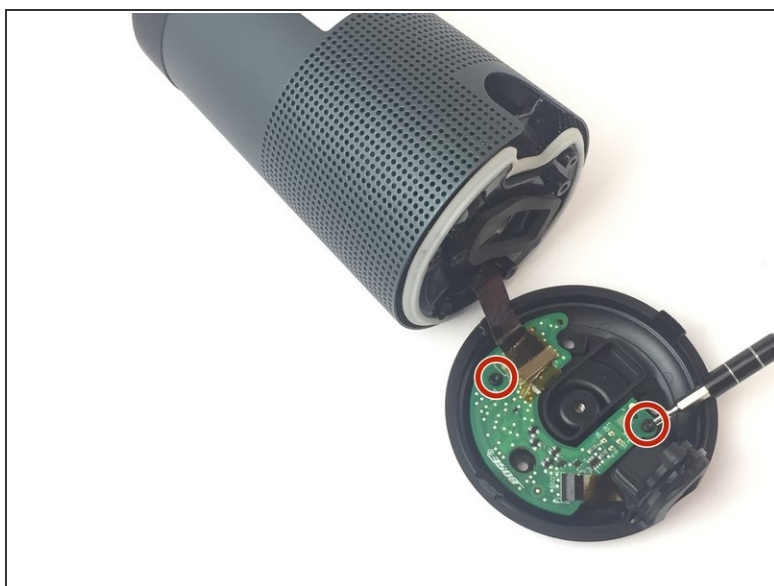
- Using the screwdriver, unscrew three screws.
- Detach the bottom cover from the rest of the speaker by pulling the two in opposite directions.

Step 3



- Remove the screw that is above the charging port.

Step 4



- Remove the two screws connecting the motherboard to the bottom cover of the speaker.
- Remove the bottom cover.

Step 5 — Top Circuit Board



- Using your hands, grip and separate the soft plastic and the metal casing away from each other with some small force.

Step 6



- Remove the (4) four screws shown around the top of the inside.
- ⓘ (2) two of the screws are shown here, the other side will look the same.

Step 7



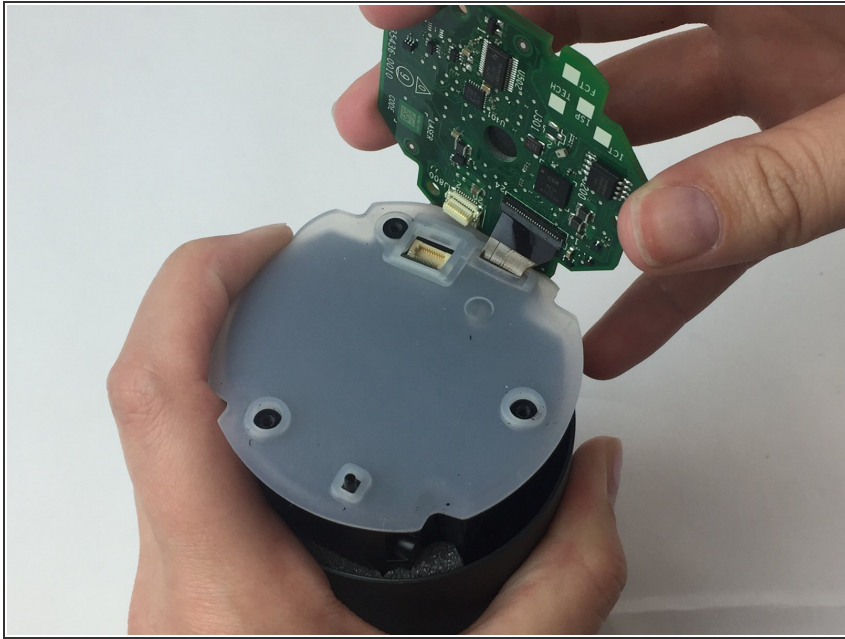
- Pry up and remove the soft plastic casing from the rest of the device.

Step 8



- Remove the 3 screws holding down the top circuit board.

Step 9



- Lift up and look on the underside of the circuit board.
- Using the plastic opening tool, pry open the wide clamp keeping a ribbon to the top circuit board. The top circuit board can now freely be removed from the device.

To reassemble your device, follow these instructions in reverse order.