



# Bose Wave Radio AWR1-1W Speaker Replacement

Remove the speakers to replace them and fix bad sound.

Written By: Cassie Harriman



# INTRODUCTION

Speakers do not last forever. This guide will demonstrate how to remove and replace the speakers on the device.



## TOOLS:

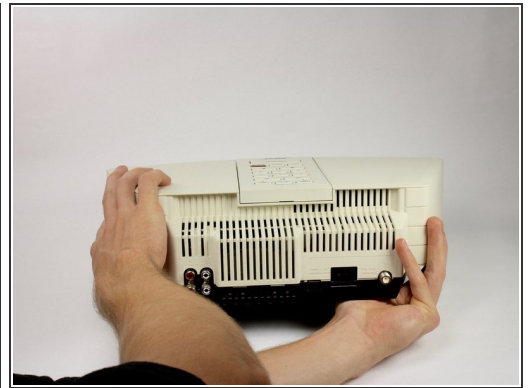
- [Spudger](#) (1)
  - [Phillips #2 Screwdriver](#) (1)
-

## Step 1 — Base



- Remove the four 19mm Phillips #2 screws from the base of the device.

## Step 2

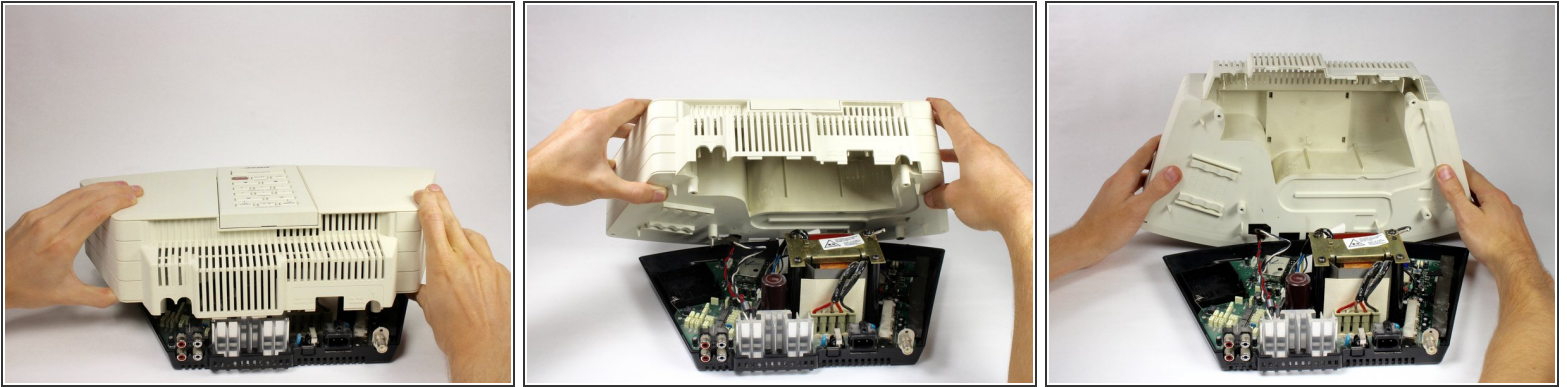


- Turn the device over, holding the base on with your thumbs.


⚠ Hold the device tightly to prevent the base from falling off.



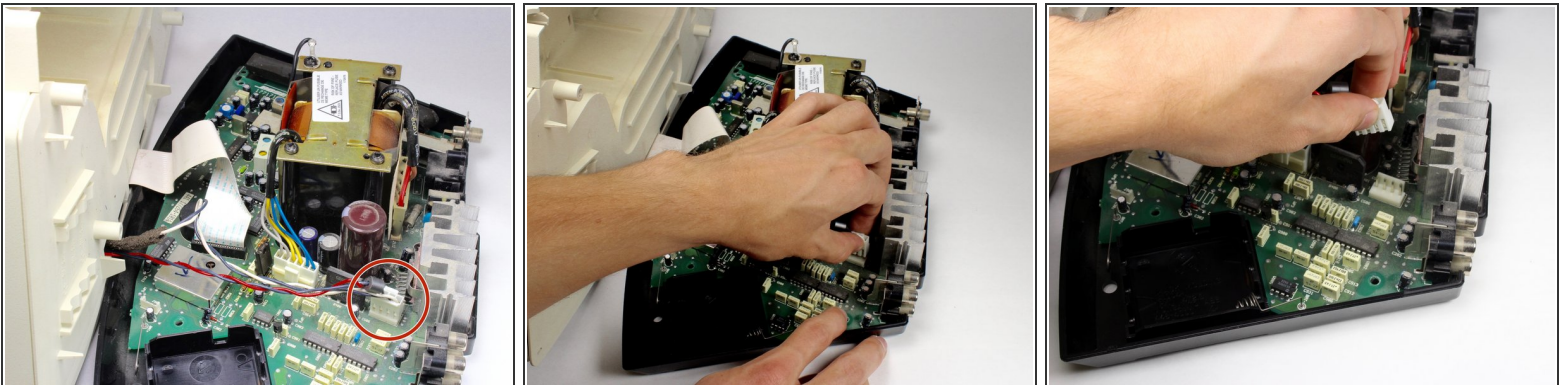
## Step 3



- Gently lift the top off of the device.

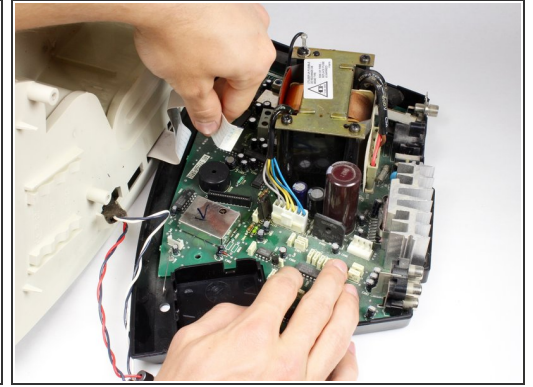
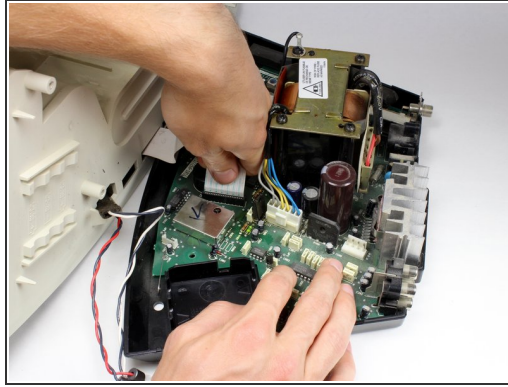
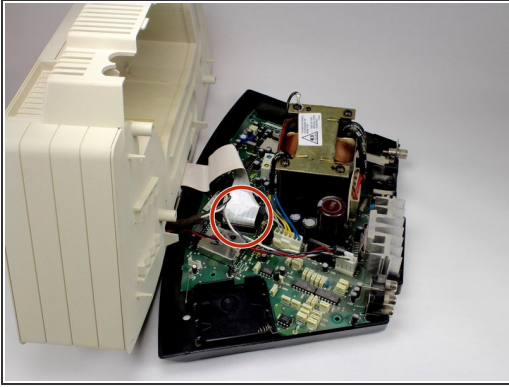
 Lift in the direction shown to avoid damaging the wires connecting the top and base of the device.

## Step 4



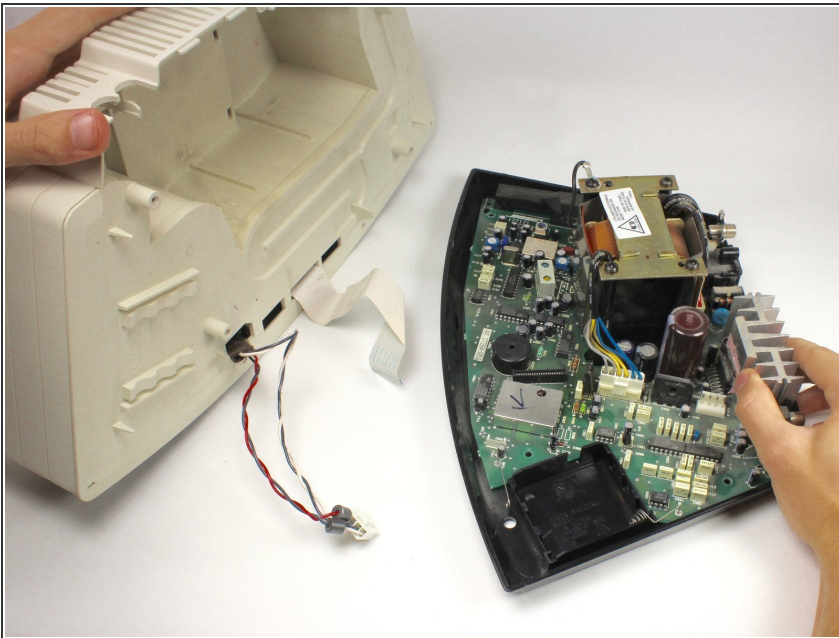
- Pinch and unplug the white connector from the device.

## Step 5



- Gently pinch and pull on the white ribbon cable to disconnect it from the base.

## Step 6



- The base should now be completely detached from the device.



## Step 7 — Front Grill



- Wedge the spudger between the top and front panel on the right side of the device.
- Push down on the spudger, lifting the front panel away from the top panel until it pops out of the right side.
- Repeat for the left side of the device.

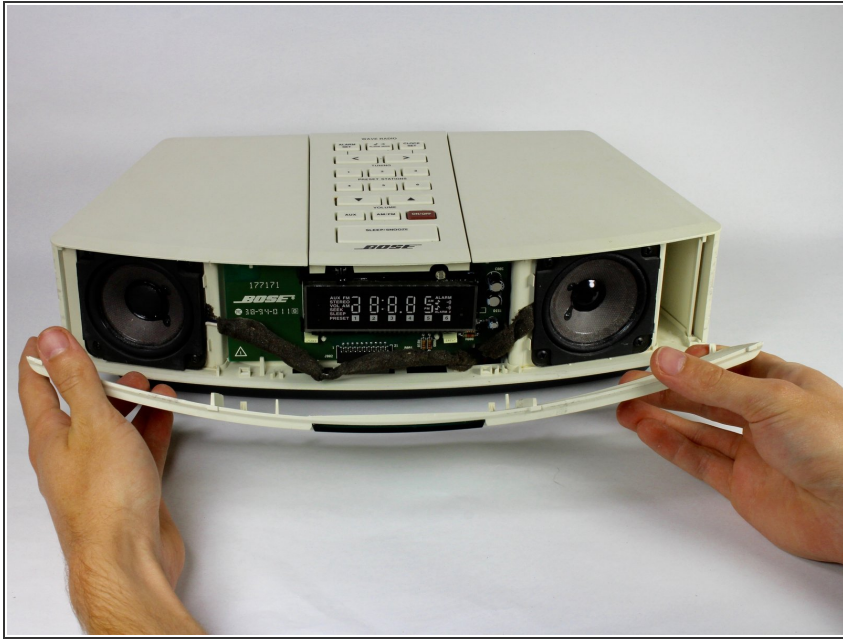
⚠ Too much pressure may break the panel, but it should flex slightly before it pops out.

## Step 8



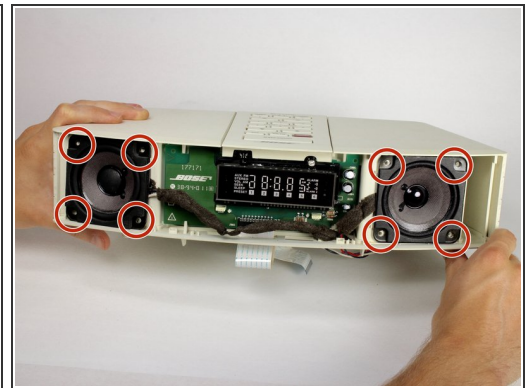
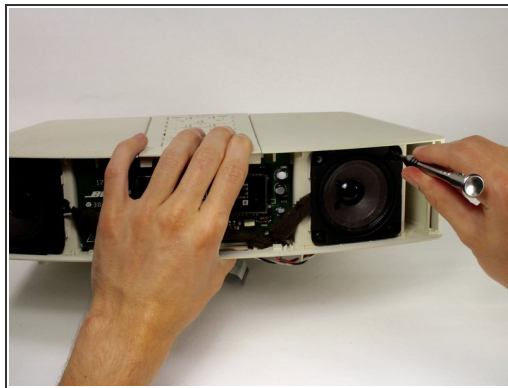
- Once the panel is released on the left side, wedge the spudger between the top panel and front grill of the device as shown.
- Apply pressure and move the spudger upward until the front grill pops out.
- Repeat for the right side of the device.

## Step 9



- Lift the front grill away from the device.

## Step 10 — Speakers



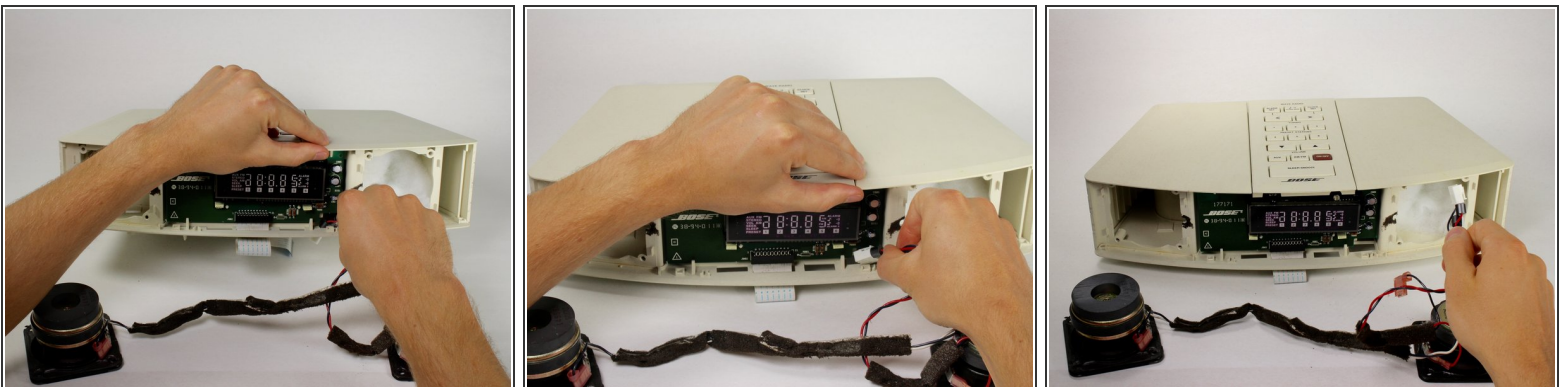
- Remove a total of eight 15mm Phillips #2 screws surrounding each speaker.

## Step 11



- Gently pull each speaker out of the device.

## Step 12



- Pull the wire connected to the speakers out of the device.
- ⓘ You already disconnected this wire from the inside of the device earlier.

To reassemble your device, follow these instructions in reverse order.