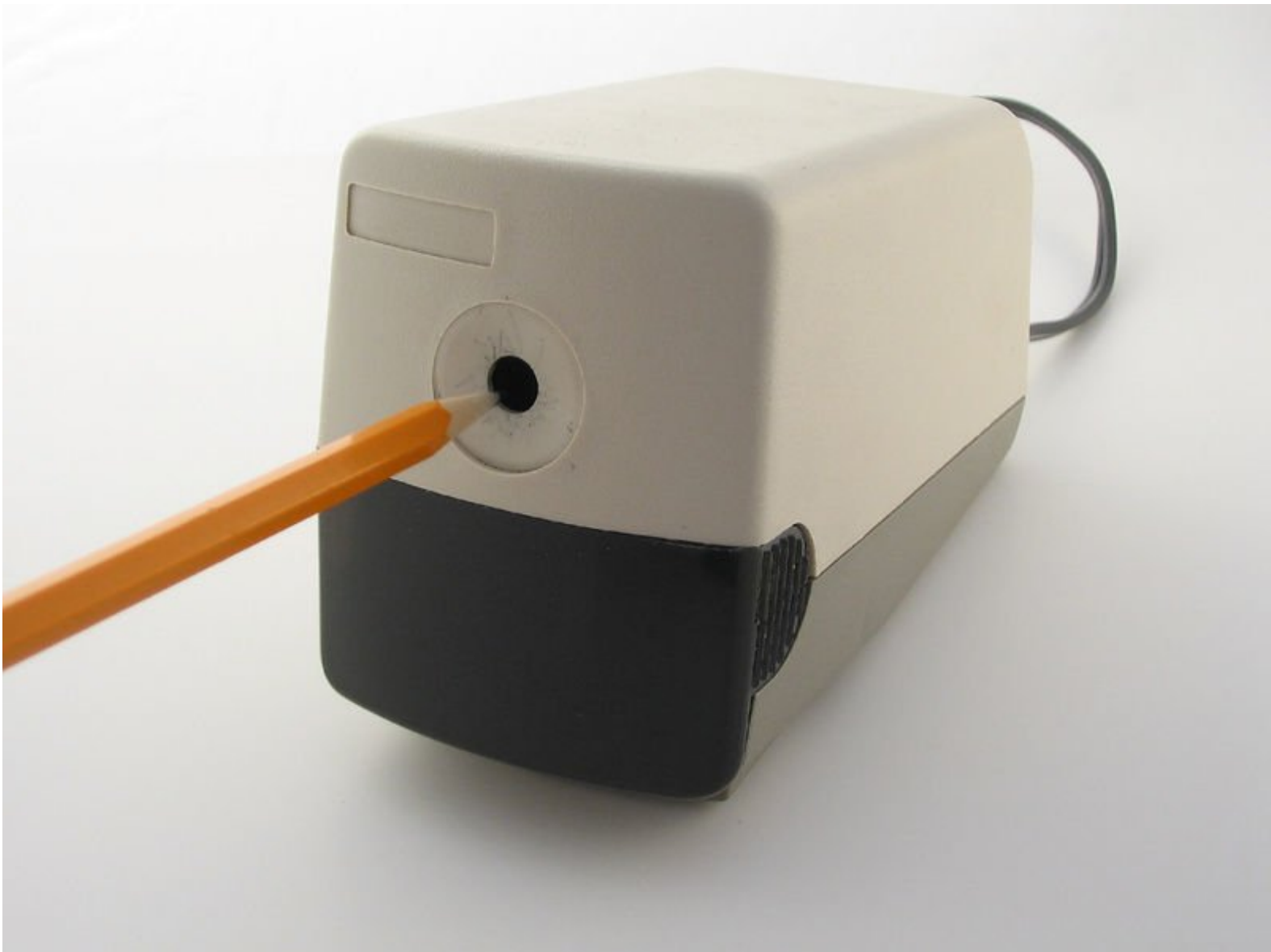




Boston Electric Pencil Sharpener Cutter Replacement

This guide will show how to open up the Boston Electric Pencil Sharpener and replace a dull or broken cutter.

Written By: Randy Yonce



INTRODUCTION

If your pencil sharpener is failing to sharpen your pencil or unevenly sharpening your pencil, it might be time to replace the cutter. You can find replacement cutters [here](#).



TOOLS:

- [WD-40](#) (1)

Optional

- [Phillips #2 Screwdriver](#) (1)
- [Flathead Screwdriver](#) (1)
- [Socket Wrench](#) (1)



PARTS:

- [Replacement Cutter](#) (1)

Step 1 — Cutter



- Remove the tray from the front of the pencil sharpener and empty the pencil shavings.

⚠ Make sure the pencil sharpener is unplugged!

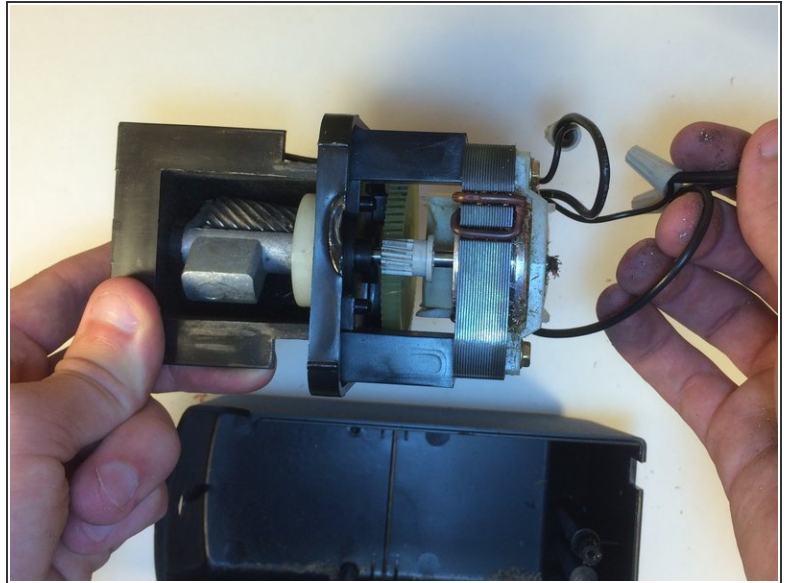
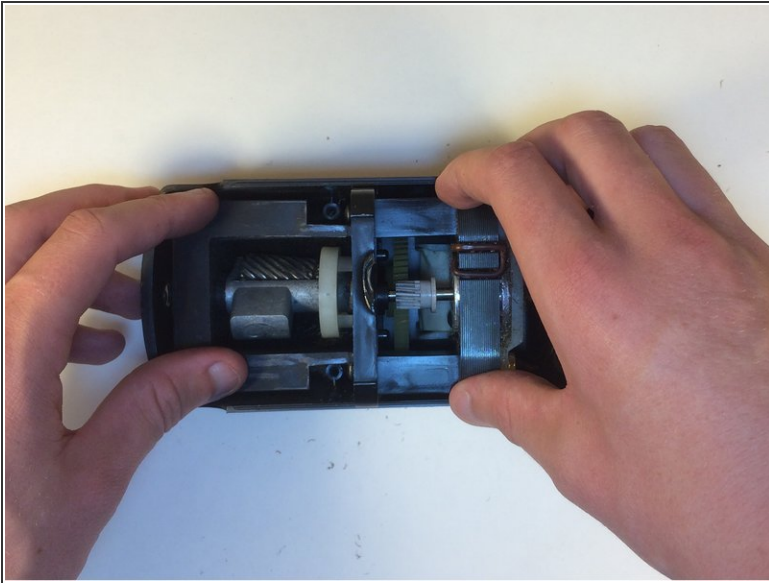
Step 2



- Unscrew the three screws securing the bottom of the sharpener.

ⓘ The screwdriver must be 6" long to reach the two screws in the front of the sharpener.

Step 3



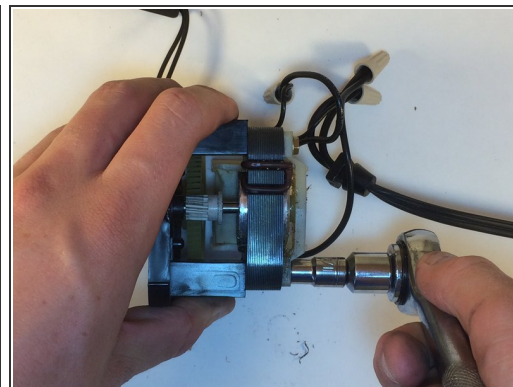
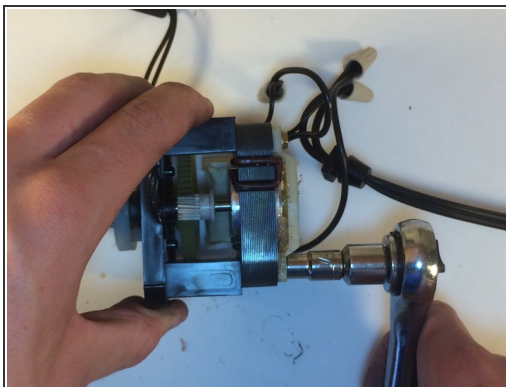
- Lift the motor and cutter from the top case of the sharpener.
- Carefully move the wires so that the case can be completely removed.
- ⓘ You shouldn't have to disconnect any wires to take the case off. If so, contact the manufacturer.

Step 4



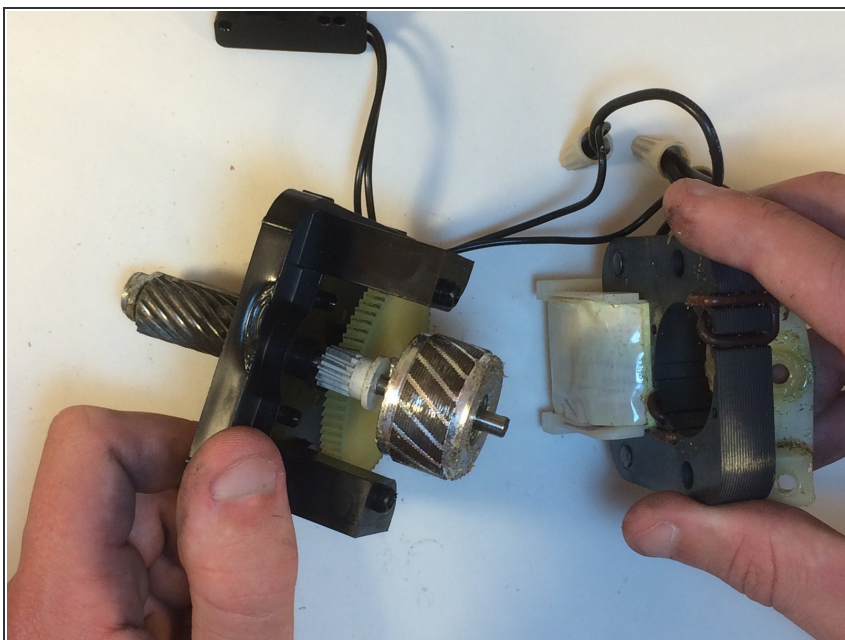
- Unscrew the protective case around the cutter by locating the two screw on the front of the sharpener.

Step 5



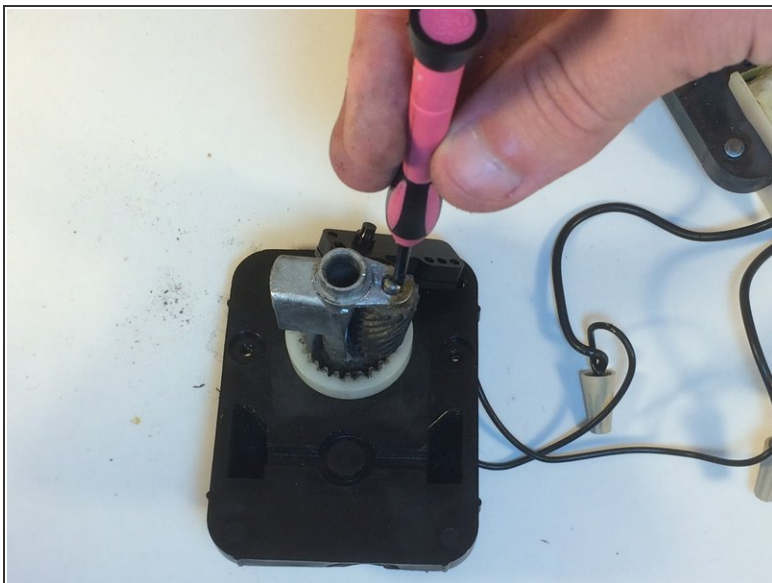
- Use the socket wrench to remove the two bolts in the back of the sharpener.
- ① You need to remove the motor in order to reach the back of the cutter.

Step 6



- Carefully separate the motor and the case around the motor from the cutter.
- Guide the wires through the holes in the casing to detach them from the cutter section of the sharpener.

Step 7



- Unscrew the sharpener with a small standard screwdriver and remove the long screw to loosen the cutter.
- ⓘ Make sure to hold the cutter to keep it from rotating.

Step 8



- Replace the cutter.
- ⓘ WD-40 would be helpful, but not necessary.

To reassemble your device, follow these instructions in reverse order.