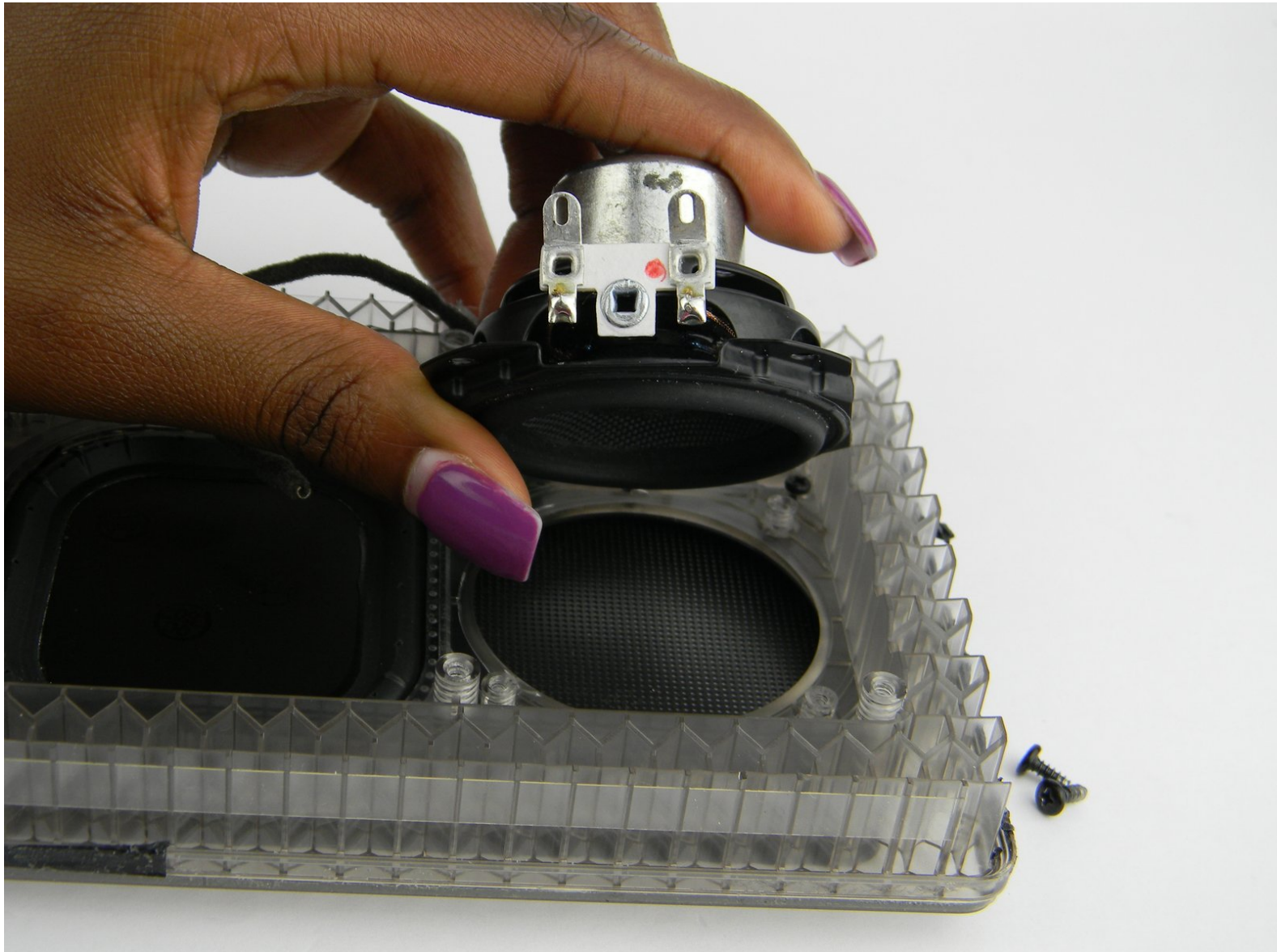




# Bowers and Wilkins T7 Speaker Driver Replacement

Replace your broken or blown out speaker drivers.

Written By: Oluwagbemisola Aderibigbe



---

## INTRODUCTION

Use this guide to learn how to replace your left and right speaker drivers for the Bowers and Wilkins T7 Bluetooth Speaker.

---



### TOOLS:

- [JIS Driver Set](#) (1)
  - [iFixit Opening Tools](#) (1)
  - [Tweezers](#) (1)
-

## Step 1 — Access Panel



⚠ As with all electronic devices, make sure your device is powered off before you begin.

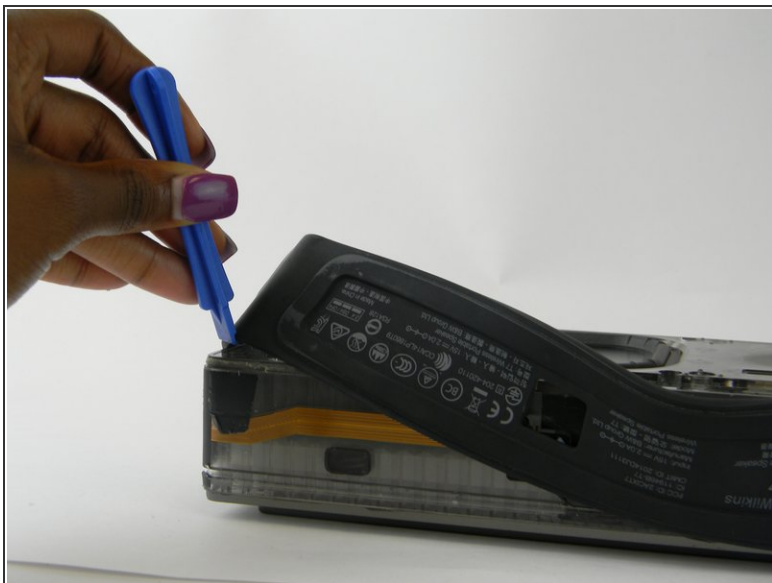
- Gently lift up the access panel; it should easily "pop" open.


## Step 2




- Remove 14mm screws on the front panel with a J1 Phillips head screwdriver.
- There are 8 screws in total.

## Step 3



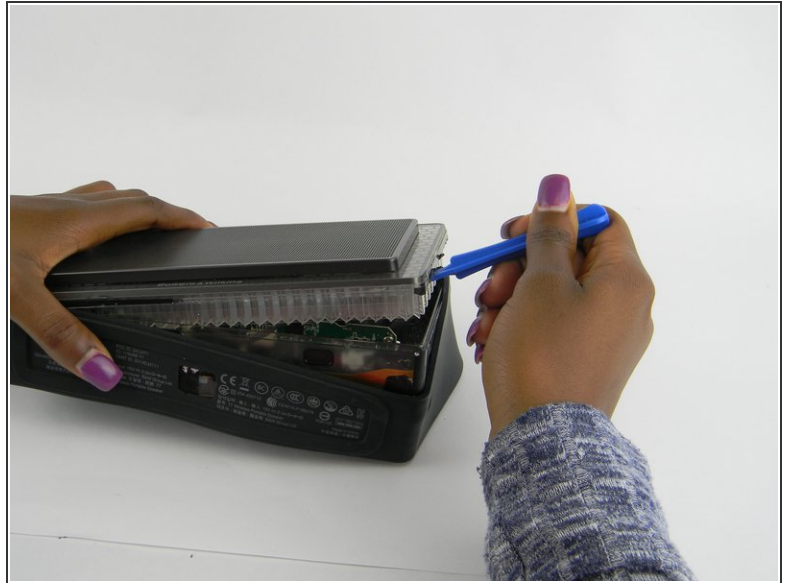
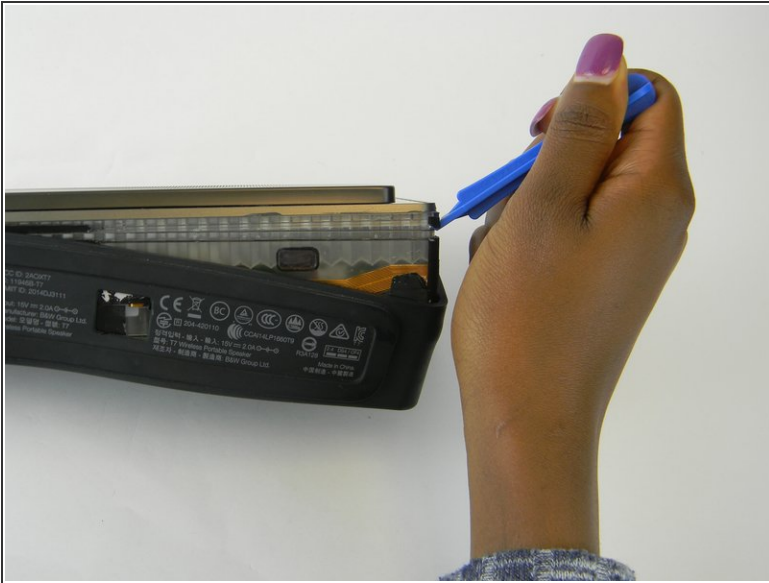
 Be gentle, the rubber seal is fragile and easy to tear, resulting in cosmetic damage to your device.

- Using the iFixit Opening Tool, carefully pry off the rubber seal around the sides.

 The seal is held by adhesive, if this is proving difficult you can use a heat gun to help the process.



## Step 4



- i** The cover is the most difficult part to remove. As you work, pry continuously, moving the tool around the device, working it a little further as you go.
- Using the iFixit Opening Tool, pry open at the seam found under the rubber seal.
  - As the cover starts to come off, you can lift up using your hand.

## Step 5



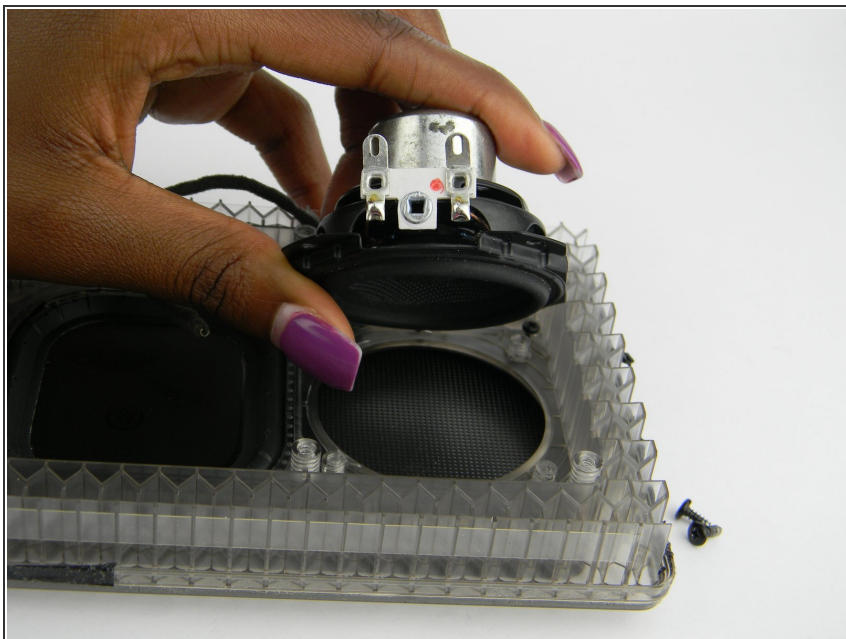
- Gently squeeze the internal locking mechanism inside the red and white terminals with either your fingers or a pair of precision tweezers.
- While squeezing the internal locking mechanism, pull back the terminal.
- Repeat this process for the second speaker.

## Step 6 — Speaker Driver



- Remove the 7mm screws around the speaker using a J100 Phillips head screwdriver.
- There are 4 screws in total around each speaker.

## Step 7



- Now that all the screws are removed, pull straight up on the speaker drive to remove the speaker drive component.

To reassemble your device, follow these instructions in reverse order.