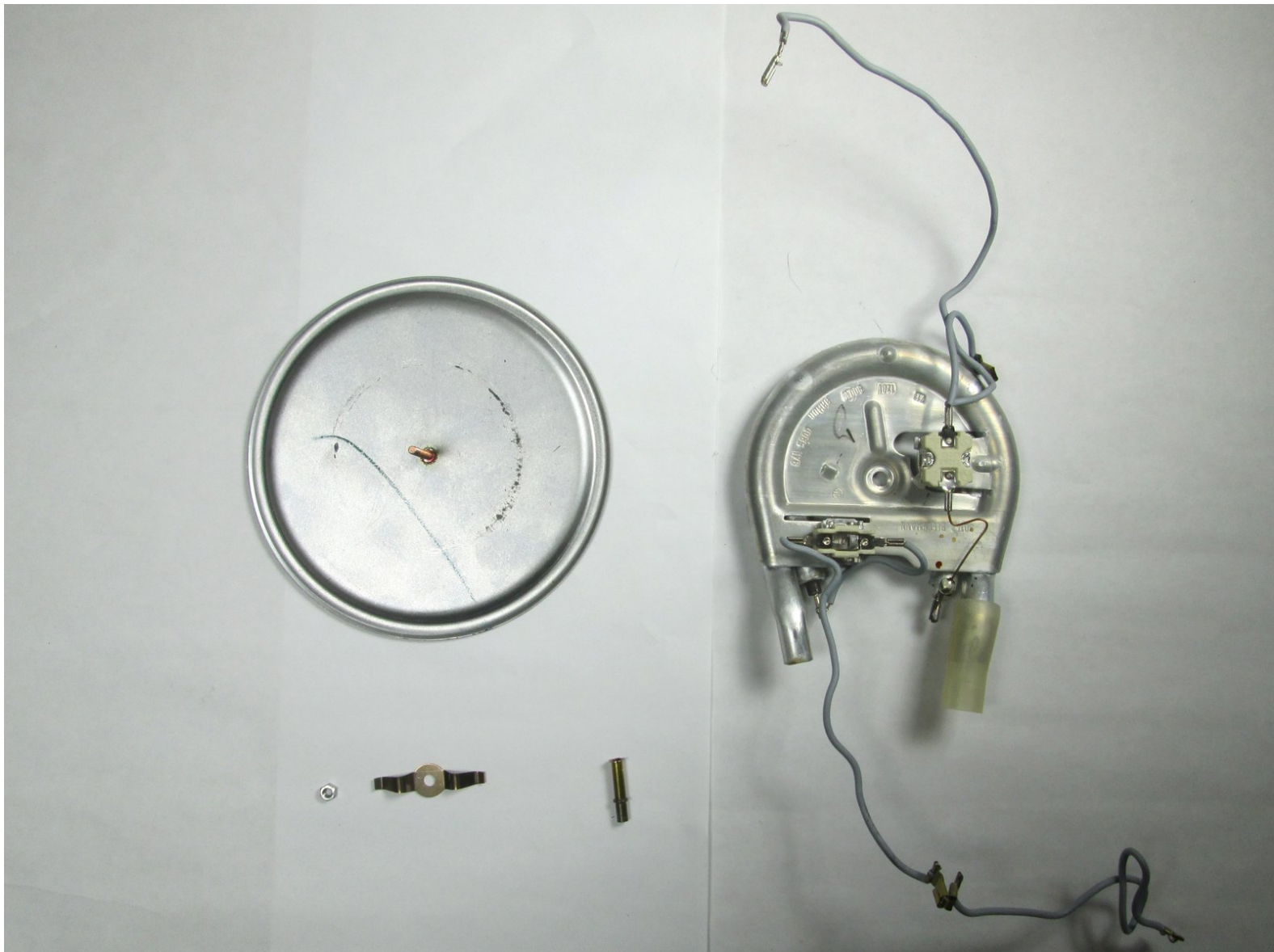




Braun Aromaster KF440 Heating Element Replacemen

This guide breaks down the steps to removing the heating element in order to replace it.

Written By: Dennis



INTRODUCTION

Removing the heating element may be necessary if the coffee maker is not keeping the coffee warm. Always unplug your device before beginning any repair.



TOOLS:

- [Slip Joint Pliers](#) (1)
 - [iFixit Opening Tools](#) (1)
-

Step 1 — Access the base



- Remove the carafe (coffee pot) from the coffee maker.
- Turn the Braun Aromaster KF 440 upside down so the base is exposed.

Step 2 — Remove the nut



- Locate the nut at the center of the base and unscrew it with a pair of basic pliers.

Step 3 — Remove the cover



- Gently lift the cover away from the bottom of the coffee maker and remove it.

Step 4 — Remove the first center tube from the one-way valve



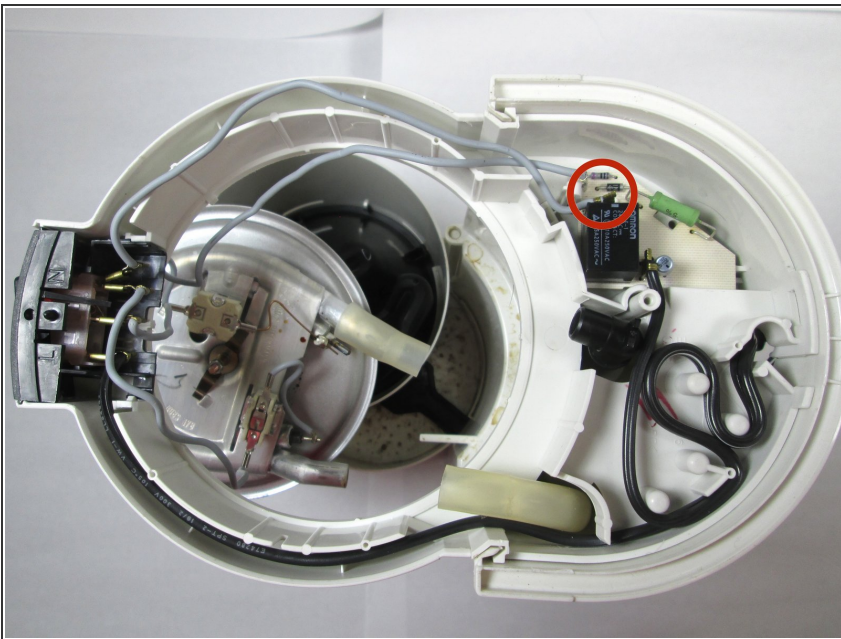
- Using the larger plastic opening tool, gently push the tubing off of the one-way valve. (If the tubing is being stubborn and won't come off, run the metal spudger around the inside of the tubing to free it up.)

Step 5 — Remove second tubing from hose



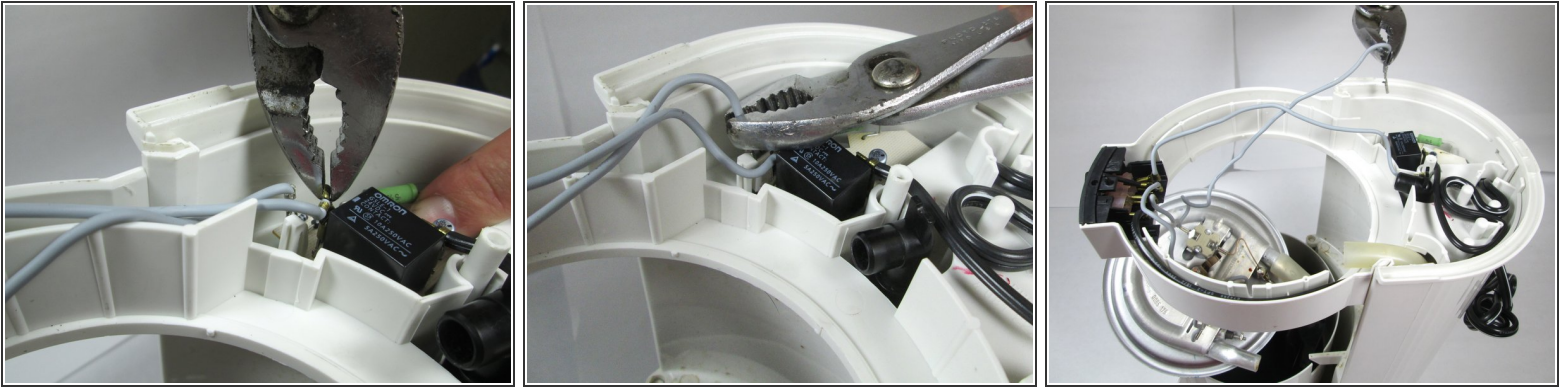
- Using the larger plastic opening tool, gently push the tubing off of the second one-way valve. (If the tubing is being stubborn and won't come off, run the metal spudger around the inside of the tubing to free it up.)

Step 6 — Locate two wires



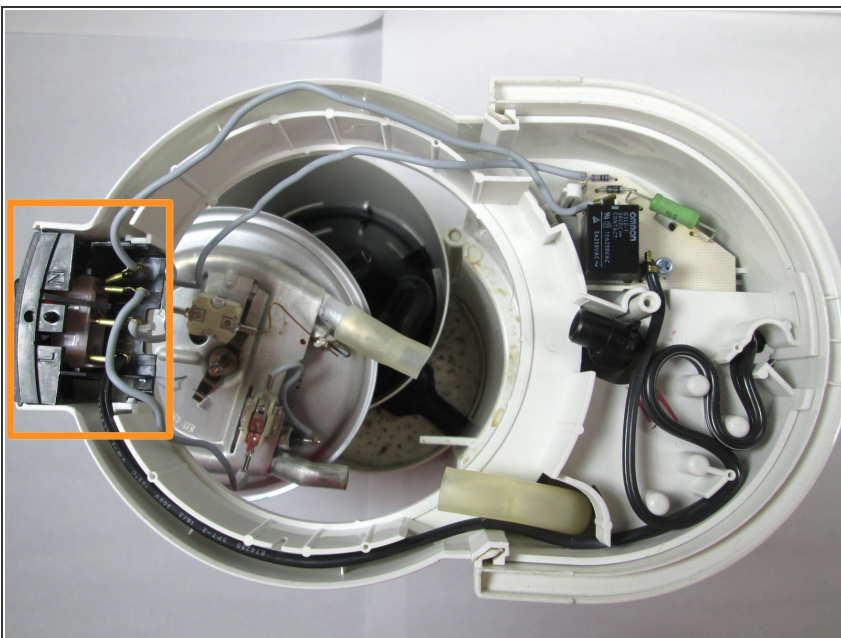
- Looking at bottom of the coffee maker, locate the two gray wires attached to the circuit board.

Step 7 — Remove wires.



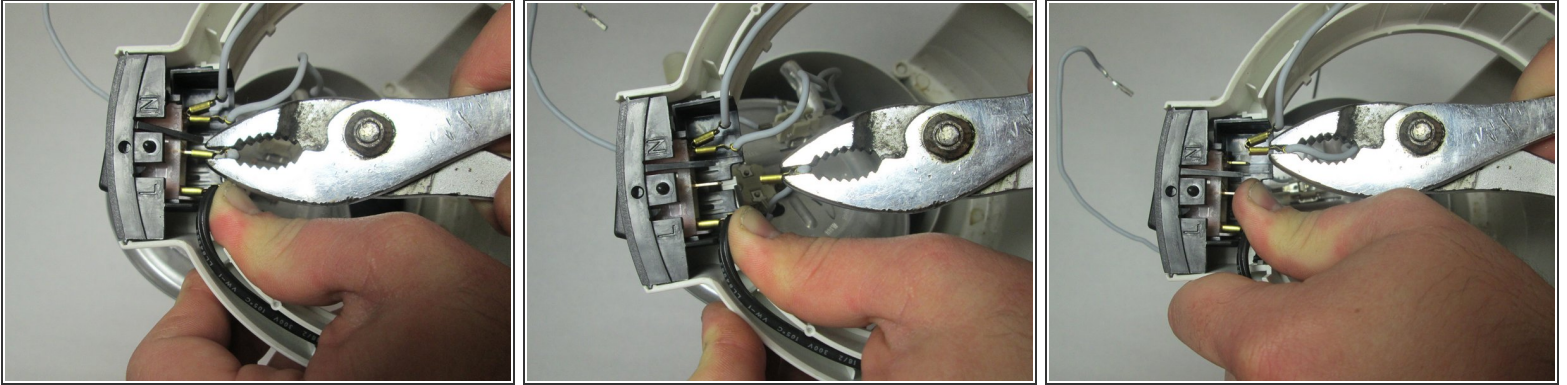
- Remove each wire by gripping with pliers and then gently pulling straight up.
- ⓘ If you're having a hard time getting the wires off, gently wiggle the wire end back and forth with the pliers while keeping sufficient downward force on the circuit board with your finger. The wire should pop off easily.

Step 8 — Locate switch wires



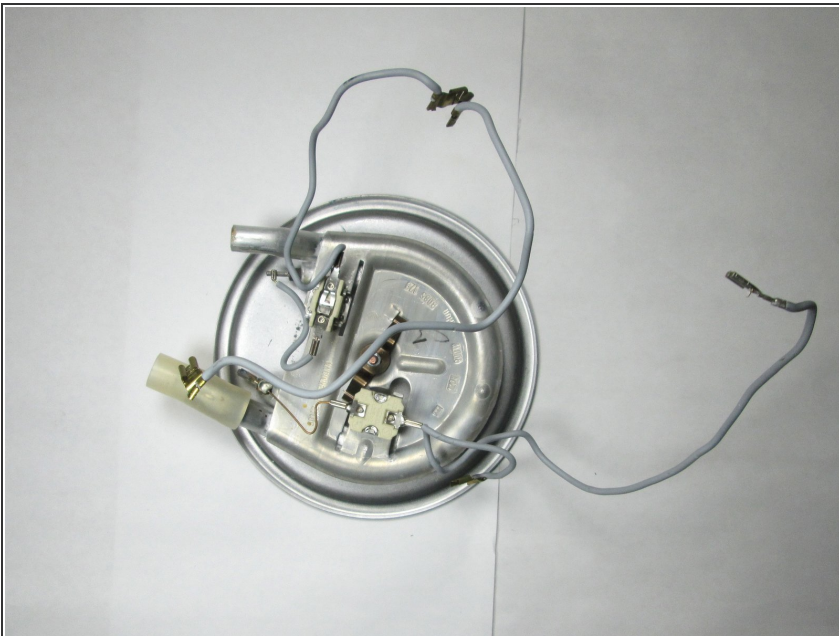
- Locate the second set of attached wires, which are connected to the on/off switch.

Step 9 — Remove switch wires



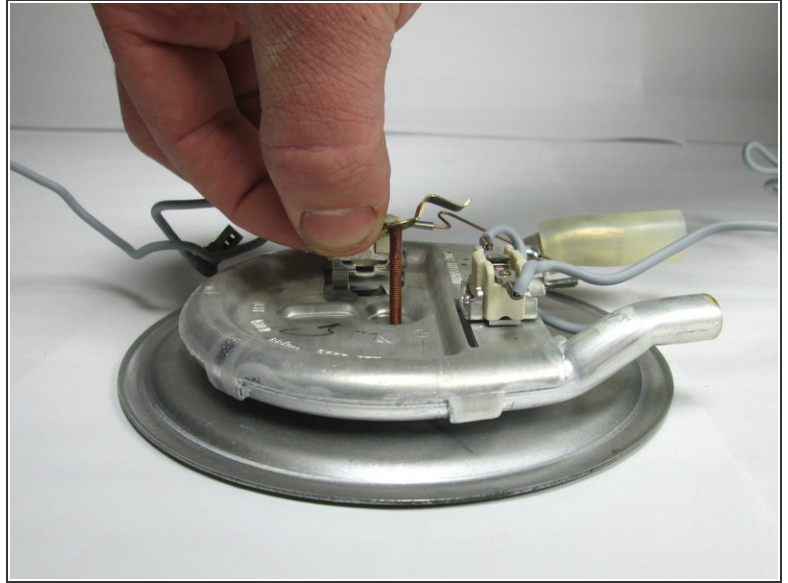
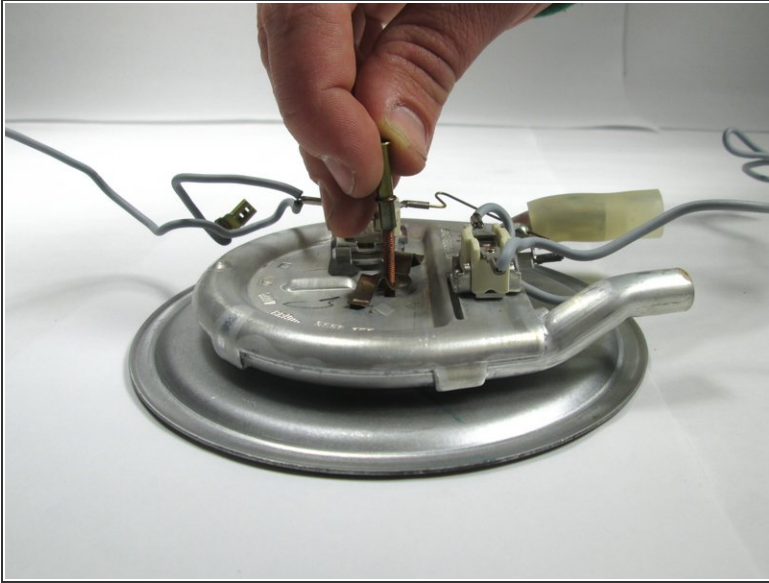
- Notice that there are 4 wires to remove.
- Remove each wire by gently gripping with pliers and then pulling straight back.
- Again, if your having a hard time removing the wires, revert back to the tip given in step 4.

Step 10 — Pull away heating element



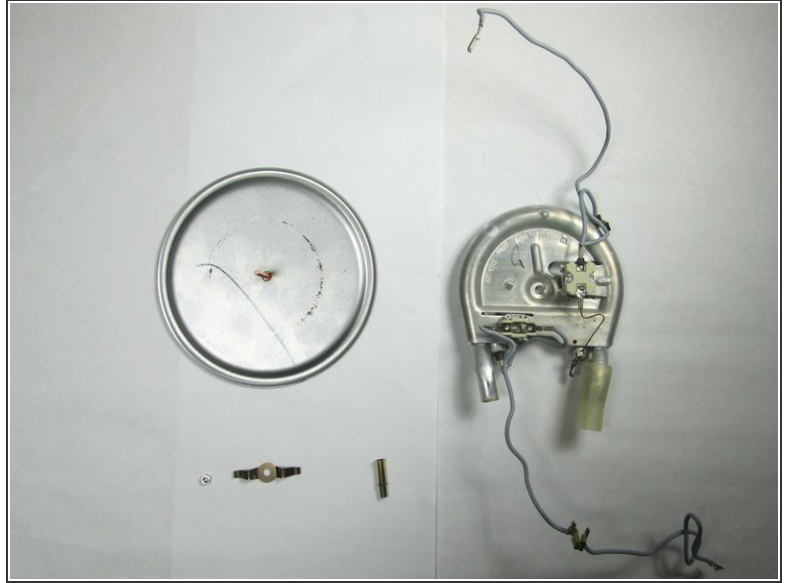
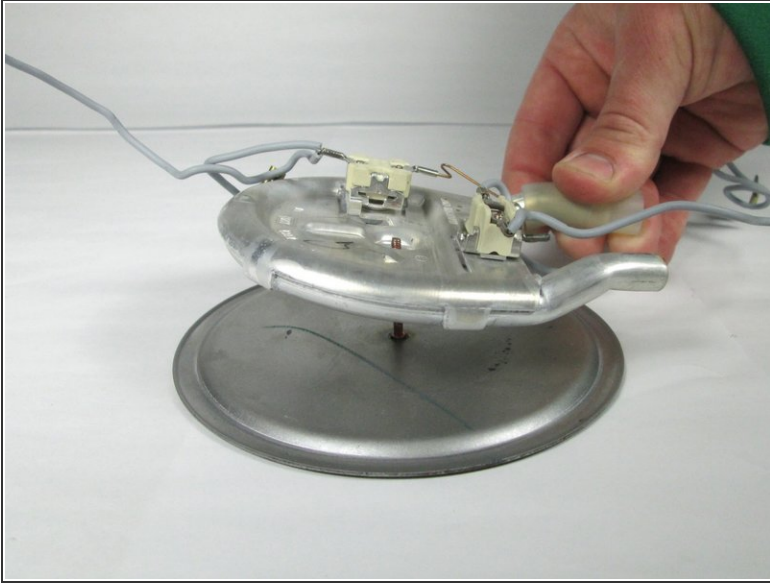
- Once everything is detached, the heating element should come right out.

Step 11 — Remove bolts and nuts



- Remove the bolt by simply screwing it off by hand, or by using the pliers again if you need to.
- Remove the metal spacer. (Note: Make sure you are aware which way it came off because it does matter when you go to reassemble)
- Remove the wing nut.

Step 12 — Separate heating element from heating plate



- Pull the heating element off of the heating plate.

To reassemble your device, follow these instructions in reverse order.