



Braun cruZer6 Battery Replacement

How to disassemble and replace batteries

Written By: Darryl



INTRODUCTION

This guide will show you how to disassemble the shaver, replace the batteries and reassemble.

The batteries are soldered directly to a PCB so you will need to be confident with a soldering iron.

Place your new batteries onto charge before you start so they have the same charge level when installed.



TOOLS:

- [Soldering Iron](#) (1)
- [Small Needle Nose Pliers](#) (1)
- [T6 Torx Screwdriver](#) (1)
- [Desoldering Pump](#) (1)



PARTS:

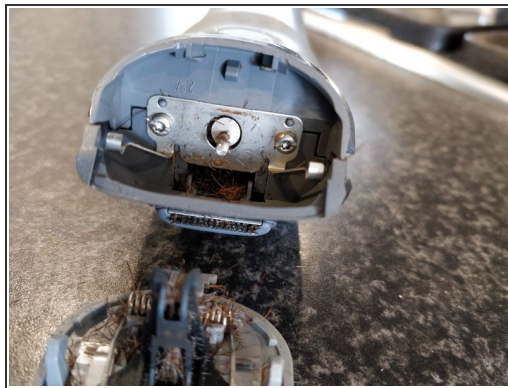
- [Rechargeable NiMh AAA Battery with terminals](#) (2)

Step 1 — Tools required



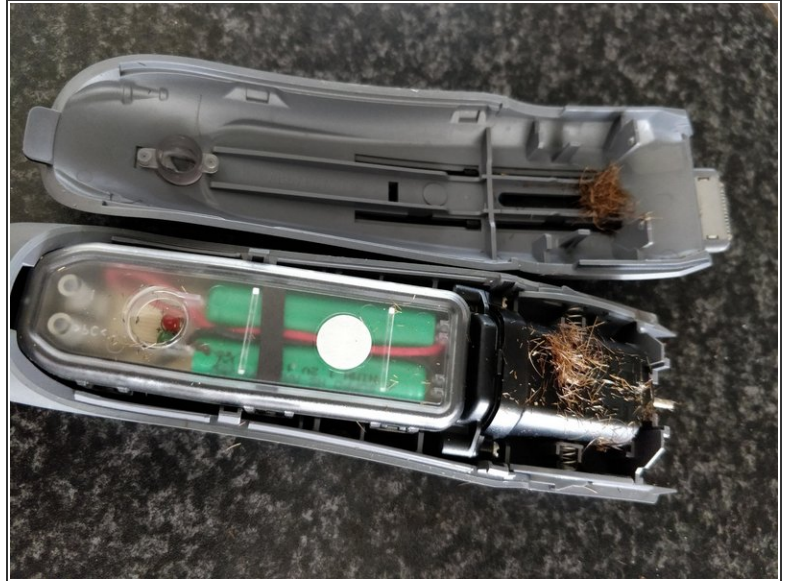
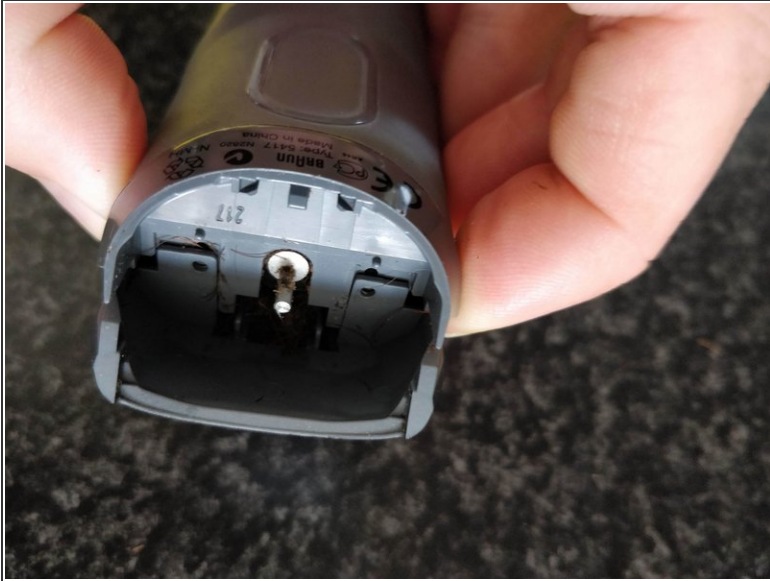
- Soldering Iron
- Solder sucker
- T6 Torx bit
- Pliers
- Two new batteries. AAA size Ni-Mh with tabs. Originals were supposed to be 700mAh, I replaced with 900mAh.

Step 2 — Remove the fasteners



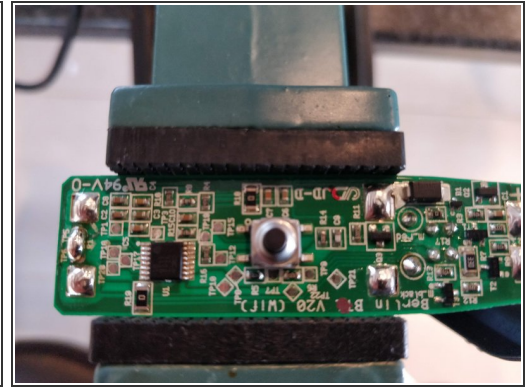
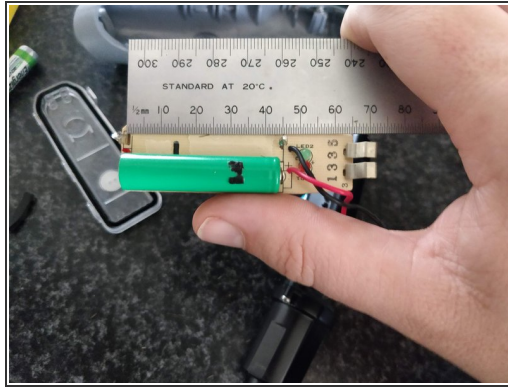
- First remove the shaver head by pushing up on the cutting head. It will hinge up
- With the head rotated up you will be able to remove it by pushing it sideways. This isn't strictly necessary if it doesn't make sense.
- This will reveal two screws, mine were Torx T6. Remove these.

Step 3 — Split the case



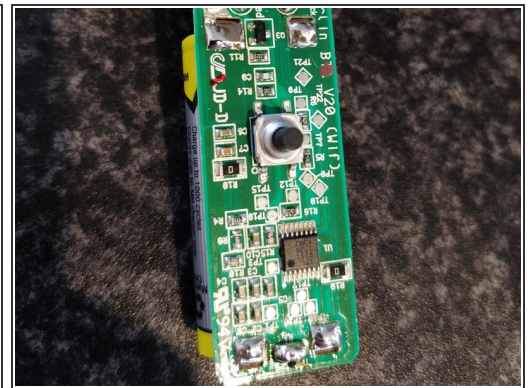
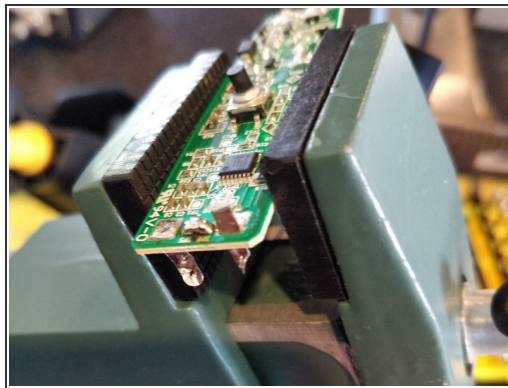
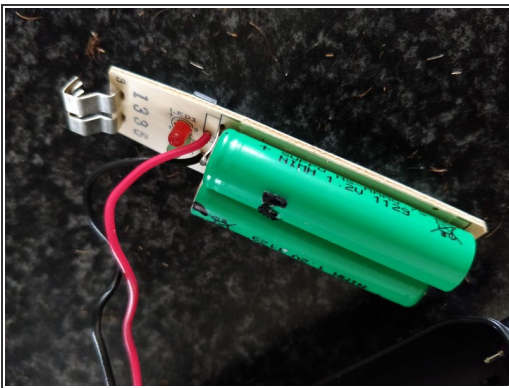
- Just push the two halves apart from the top end.
- Have a look at the picture to see where the clips are. Note the tab on the bottom end.

Step 4 — Remove the electronics



- The black module simply lifts clear of the housing.
- The clear lid has three clips on each side. Ease these up and lift the clear lid.
- The PCB lifts clear of the black housing. It is a little reluctant but there are no hidden fasteners. I found it best to slid a flat blade screwdriver down the side of a battery and lever out.
- Be careful not to apply pressure to the AC tabs, shown in the second picture on the right. They lift clear of the charger connection without assistance.

Step 5 — Remove and replace batteries



- De-solder the old batteries from the PCB using your preferred method.
- I cut the batteries free from the tabs. Then used a solder sucker to get rid of the bulk of the solder. Finally I heated up the joint and used pliers to push the remaining tab clear.
- Note the polarity marked on the PCB and install the replacement batteries. Make sure you cut the tabs down before folding them over to prevent any shorts.

This document was generated on 2019-12-19 11:38:18 AM (MST).

Step 6 — Reassemble



- Everything is just the reverse. There are no hidden tricks and you can see everything.
- There should be a seal under the clear lid, make sure it remains.
- Check the AC connectors are not bent and touching when the PCB is reinstalled in the black housing. If you get this wrong you may turn the shaver into a smoke generator.

To reassemble your device, follow these instructions in reverse order.