



# Braun hld6 Disassembly

This guide will explain step by step how to disassemble the Braun hld6 hairdryer.

Written By: Roisin



## INTRODUCTION

Use this guide to disassemble a Braun hld6 hairdryer or to gain access to malfunctioning parts that need to be replaced.




### TOOLS:

- [1.5 mm Flathead Screwdriver](#) (1)
  - [Phillips #1 Screwdriver](#) (1)
-

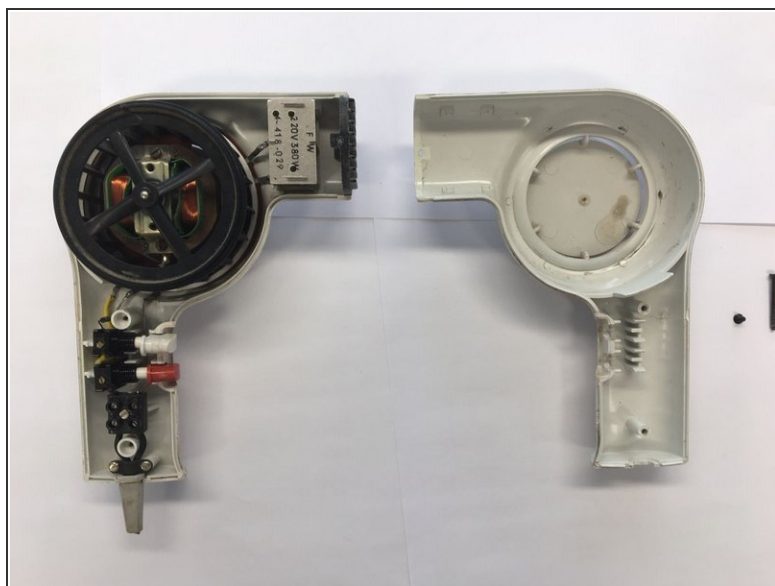
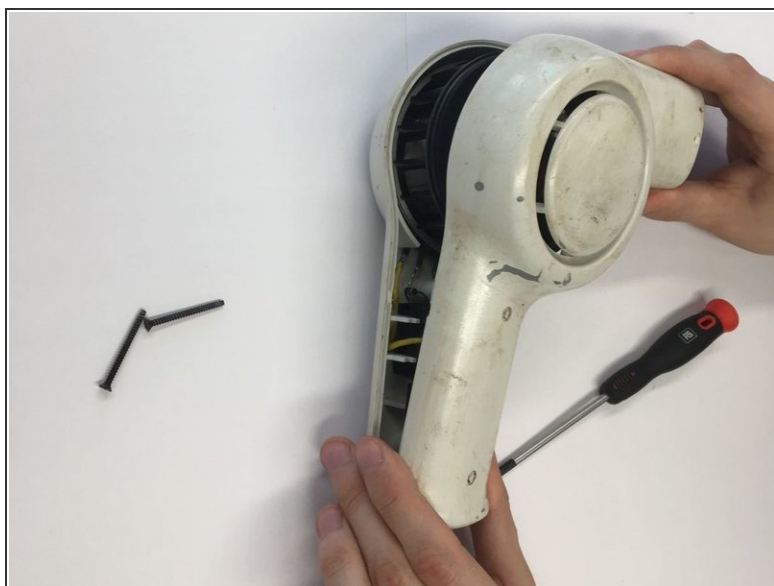
## Step 1 — Braun hld6 Disassembly



 Make sure the hairdryer is not plugged in!

- Take out the two 32.3 mm Phillips #1 screws from the outside.
- Take out the one 6.0 mm Phillips #1 screw.

## Step 2



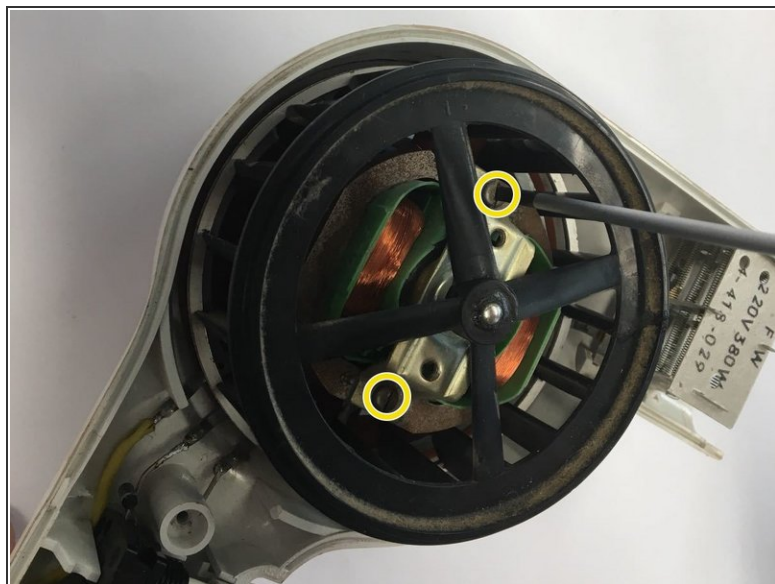
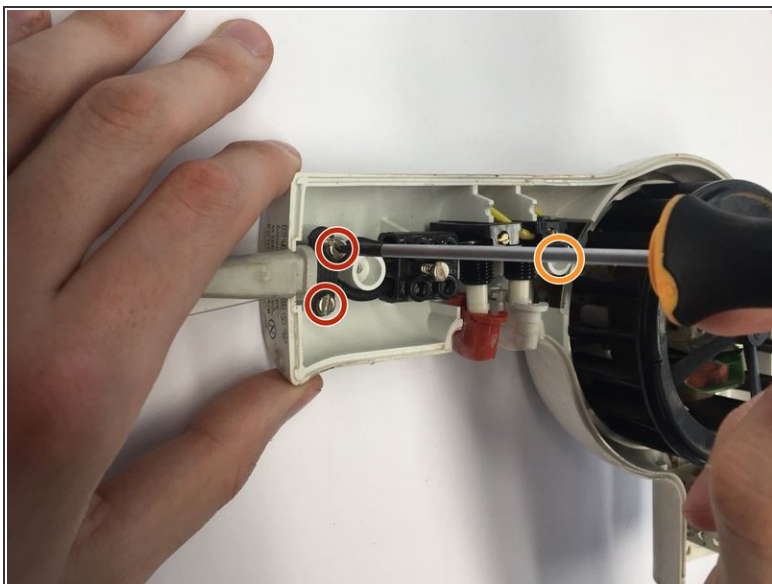
- Pry apart the two main bodies.

### Step 3



- Take out the last outside screw, a 6.0 mm PH #1, to remove the grid.

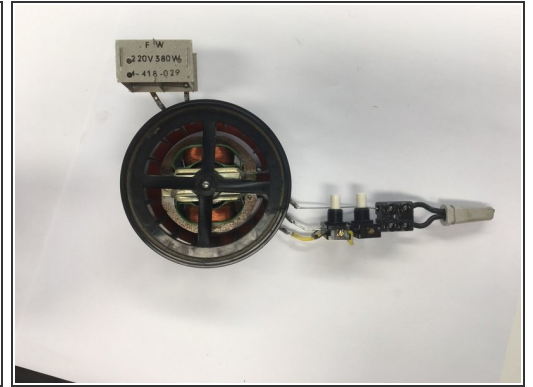
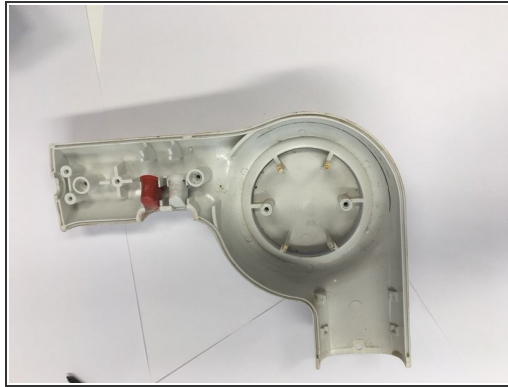
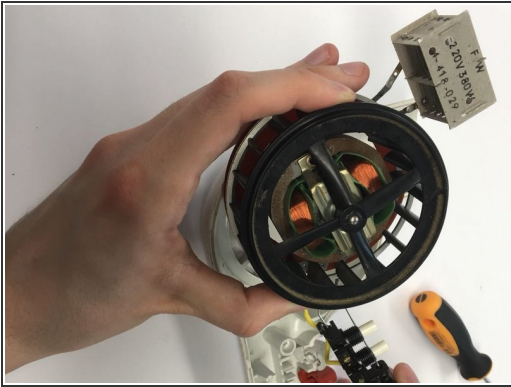
### Step 4



- Take out the 14.6 mm Flathead screws that hold the power cord in place.
- Take out the 18.2 mm Flathead screws that hold the buttons in place.
- Take out the 27.1 mm Flathead screws that keep the motor in place.

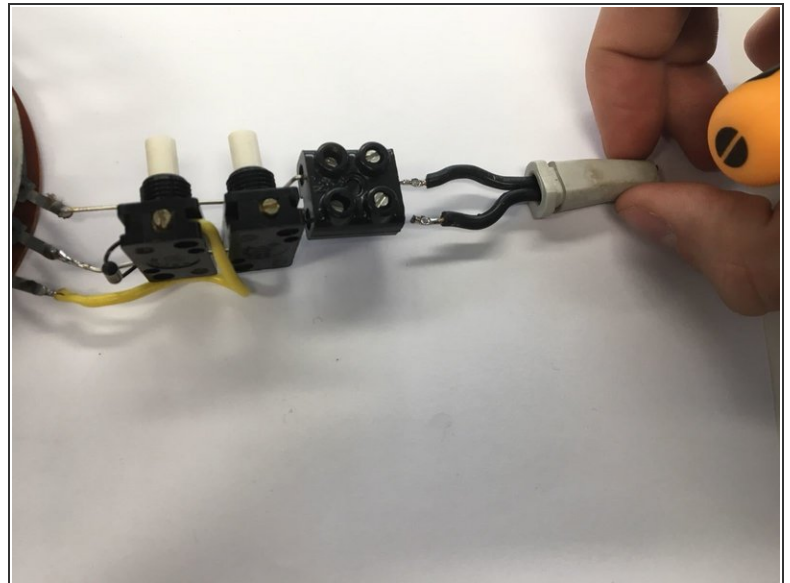
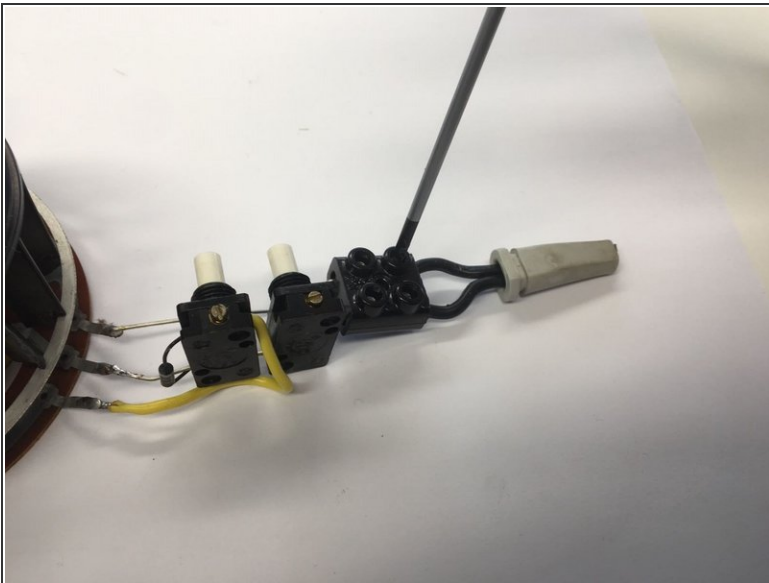


## Step 5



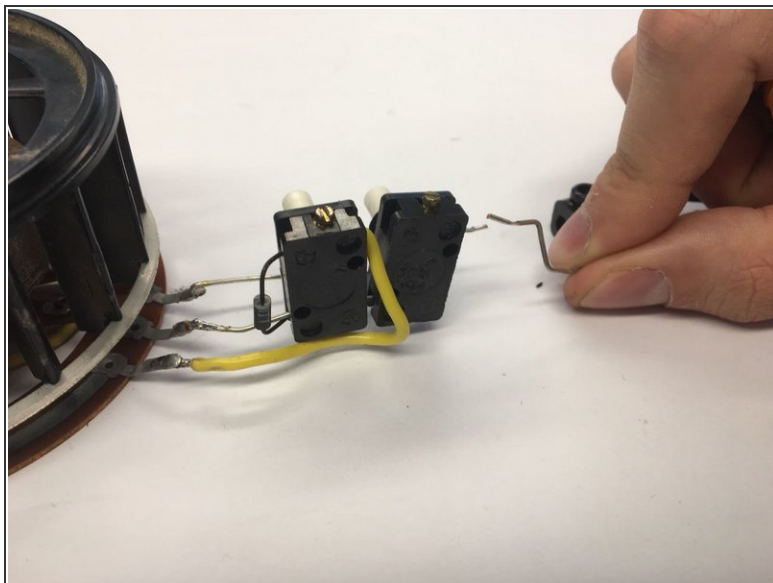
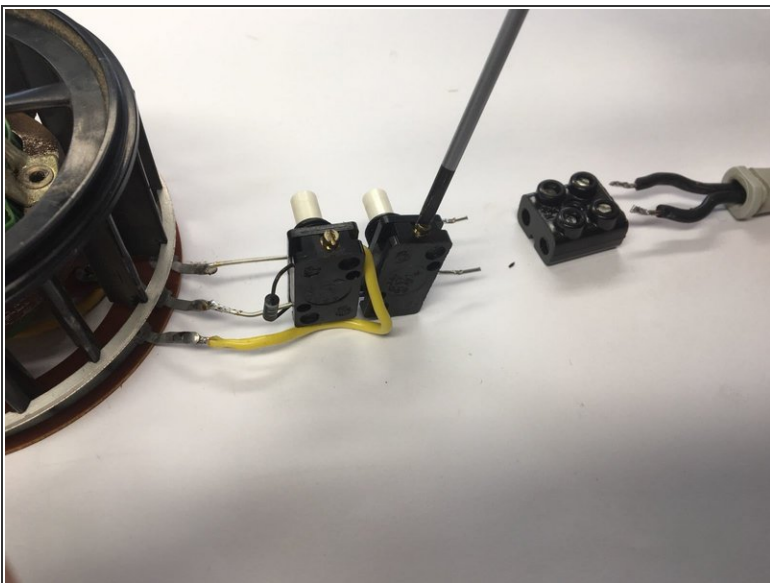
- Take out the interior.

## Step 6



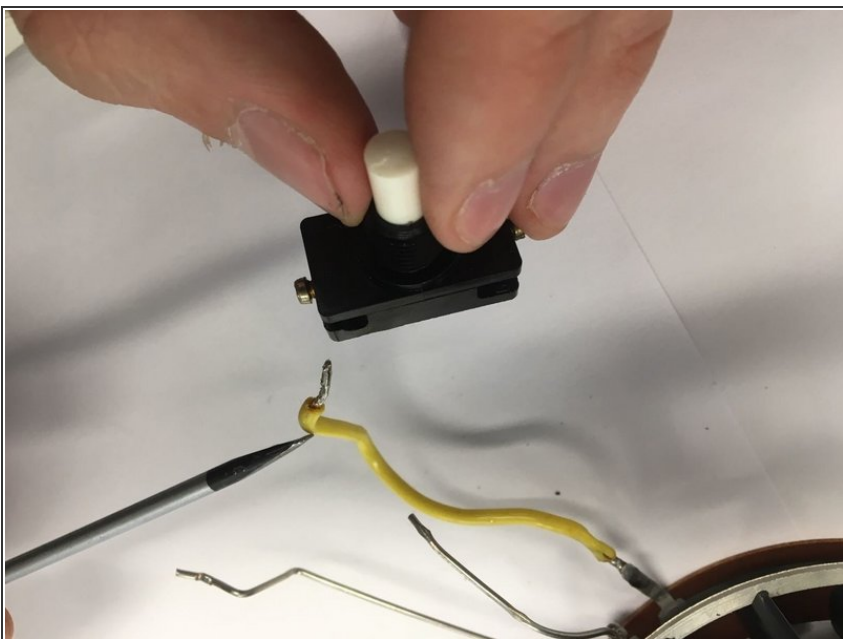
- Loosen the 2 flathead screws in the terminal block closest to the power cord.
- Pull out the power cord.

## Step 7



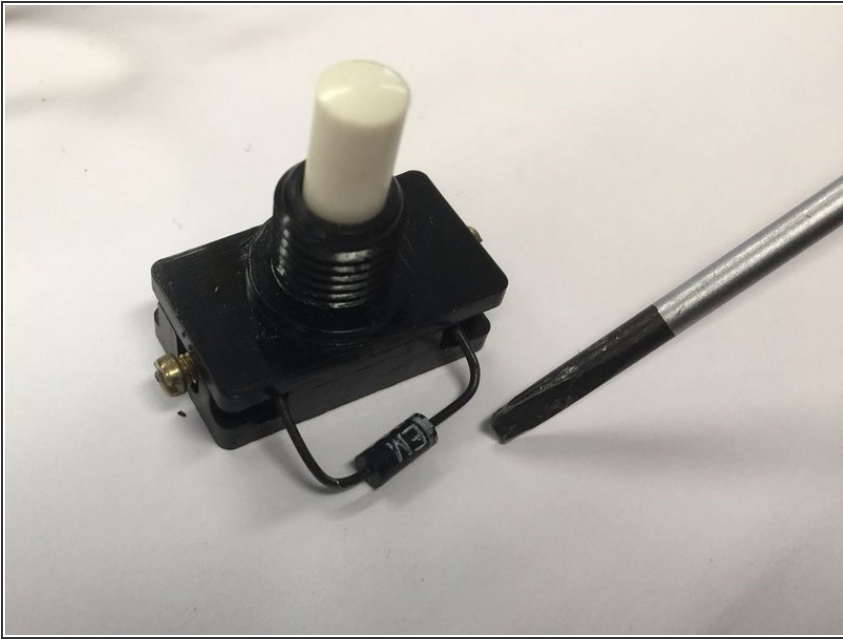
- Loosen the flathead screws and remove the wires from the button holder. Remove the button holders. When you unscrew the wire opposite to where the yellow wire is connected, you can slide the button off of the middle wire connected to the motor.

## Step 8



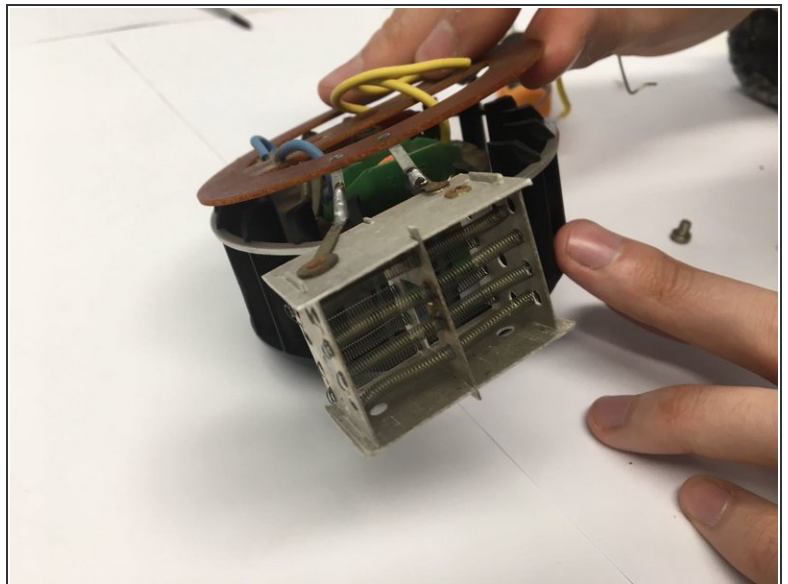
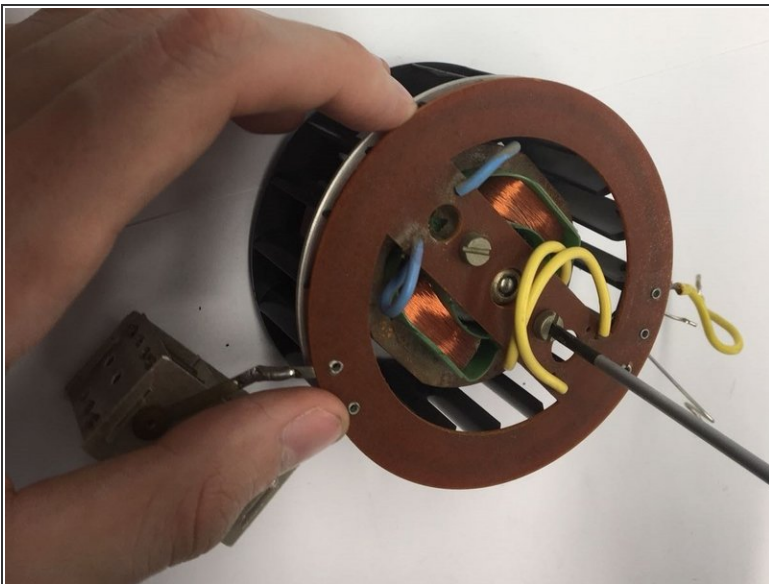
- Lastly, remove the yellow wire.

## Step 9



- Take out the diode.

## Step 10



- Remove the flathead screws from the back of the motor.
- ⓘ To take apart the remaining parts, desoldering is required.

To reassemble your device, follow these instructions in reverse order.