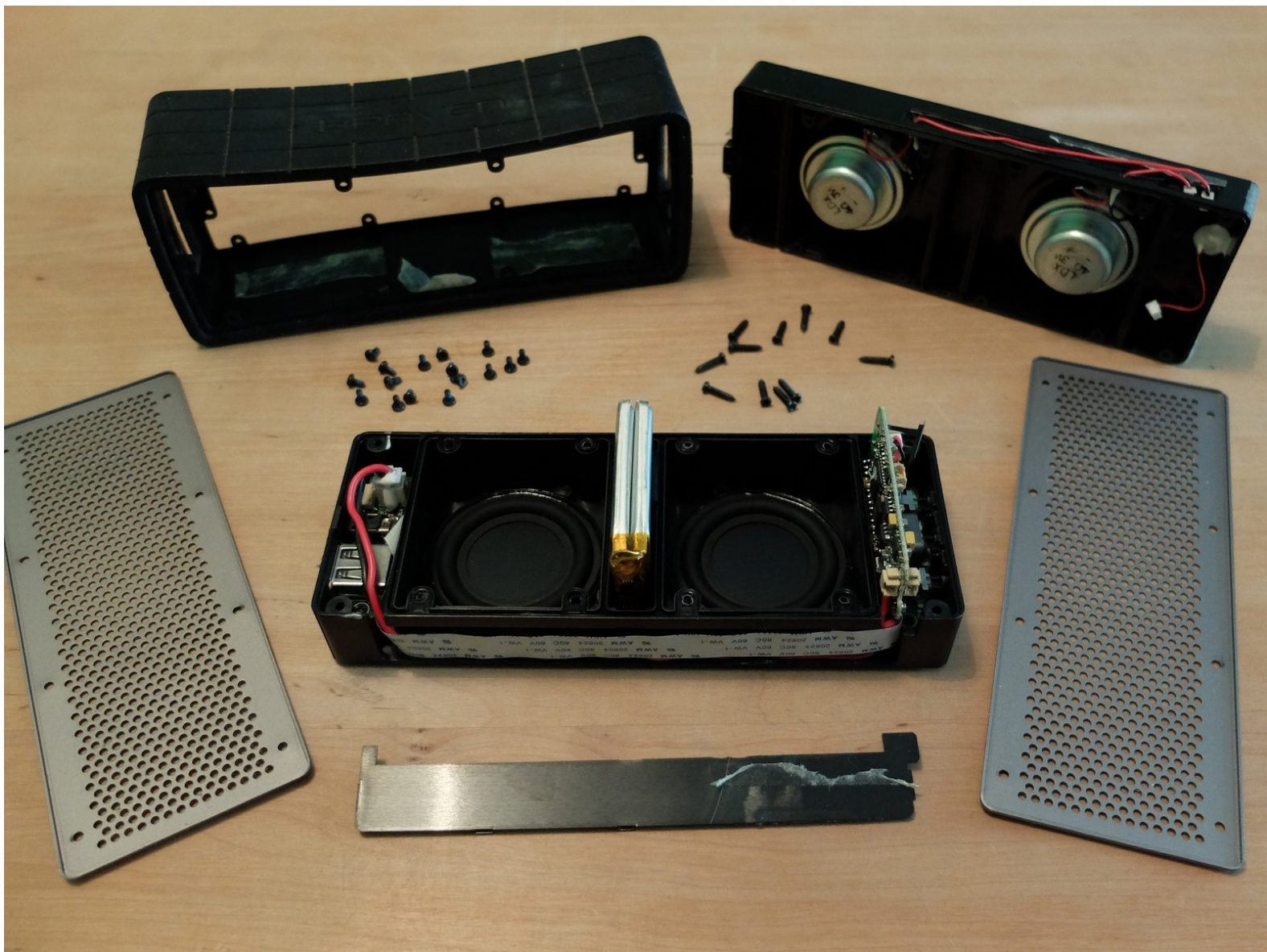




# Braven 625s Accumulator Replacement

Braven 625s - how to exchange Lithium-Polymer accumulator. Open Braven 625s case, Braven625s accumulator, Space for accumulator, Mounting replacement

Written By: Tea Age



## INTRODUCTION

When the internal accumulator gets weak, you cannot use the Braven 625s anymore. In my case the box stopped to play even with external power supply. I could not find an appropriate help in the internet so I tried it by myself and here are the results:



### TOOLS:

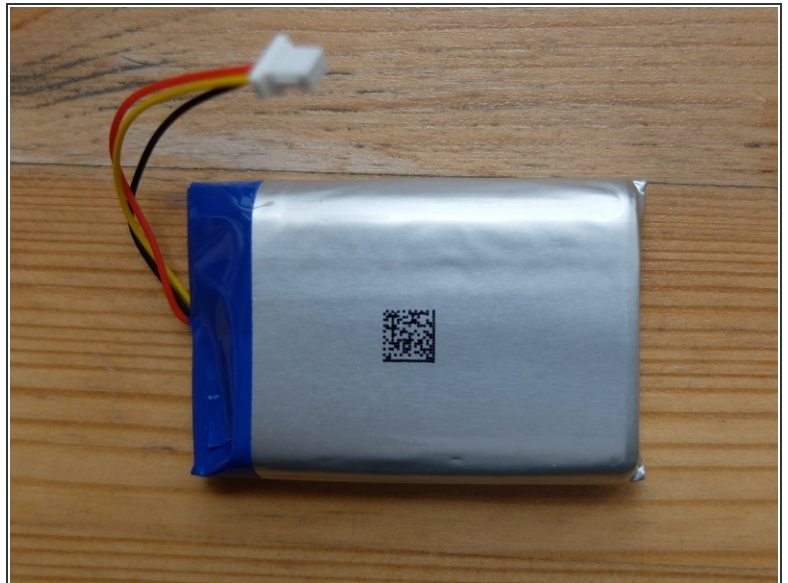
- [Soldering Iron](#) (1)



### PARTS:

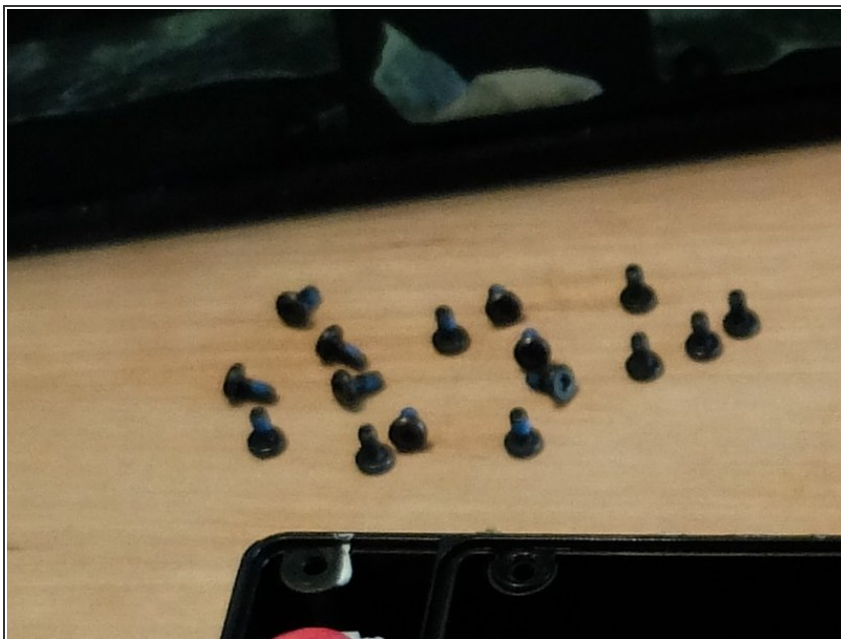
- [Battery](#) (1)  
BAK 3,7V 1750mAh 4,67Wh 963450P  
Lithium LIPO Akku Falcom Mambo2 R/C  
GPS NAVI  
*or similar*

## Step 1 — Replacement accumulator



- See Download-Document

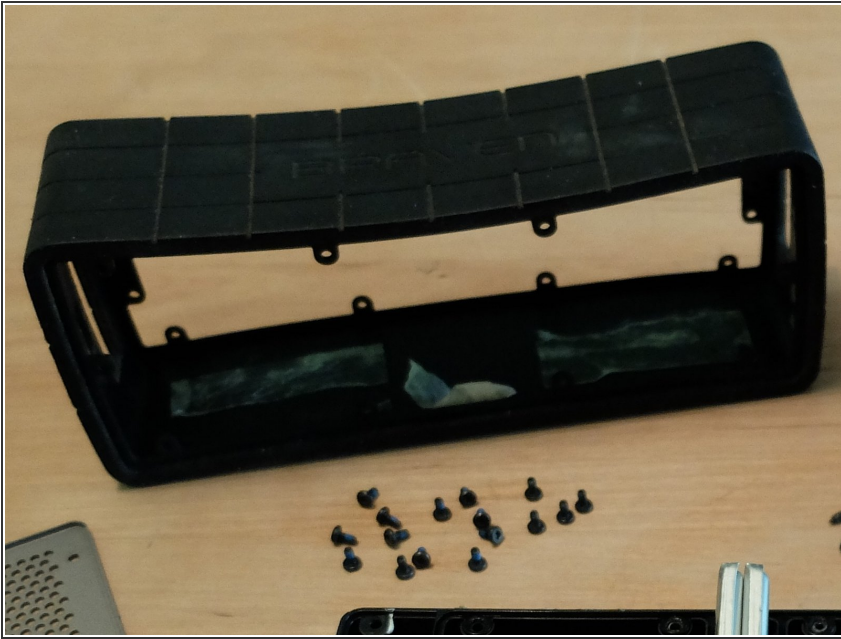
## Step 2 — Remove extern visible screws



- Open all 16 extern visible screws with exact fitting imbus screwdriver. During production the screws are probably mounted by a machine and you need some force to open them in the usual direction against clockwise.



### Step 3 — Remove the rubber case



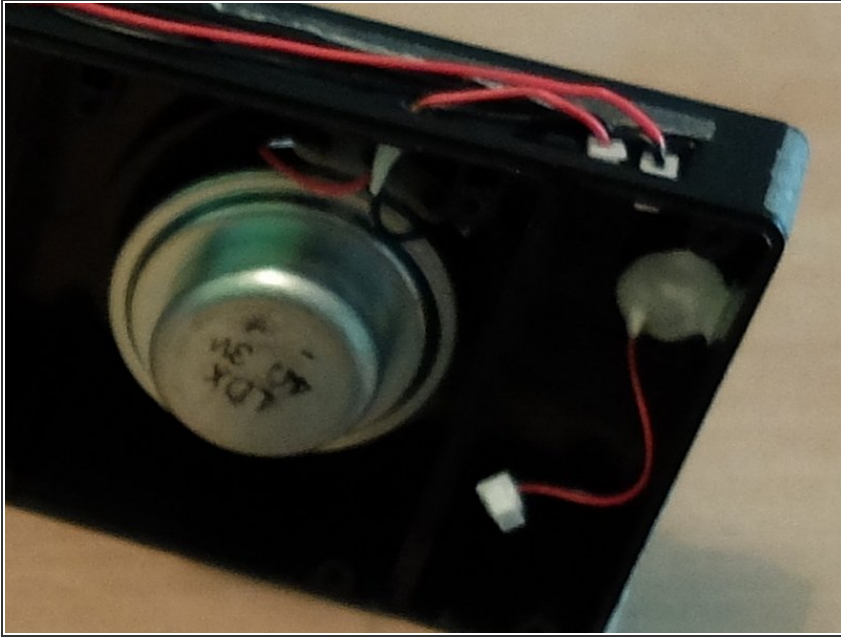
- Remove the rubber case carefully. It is fixed with a two-sided adhesive tape around the case. This is no big deal.

### Step 4 — Remove internal case screws



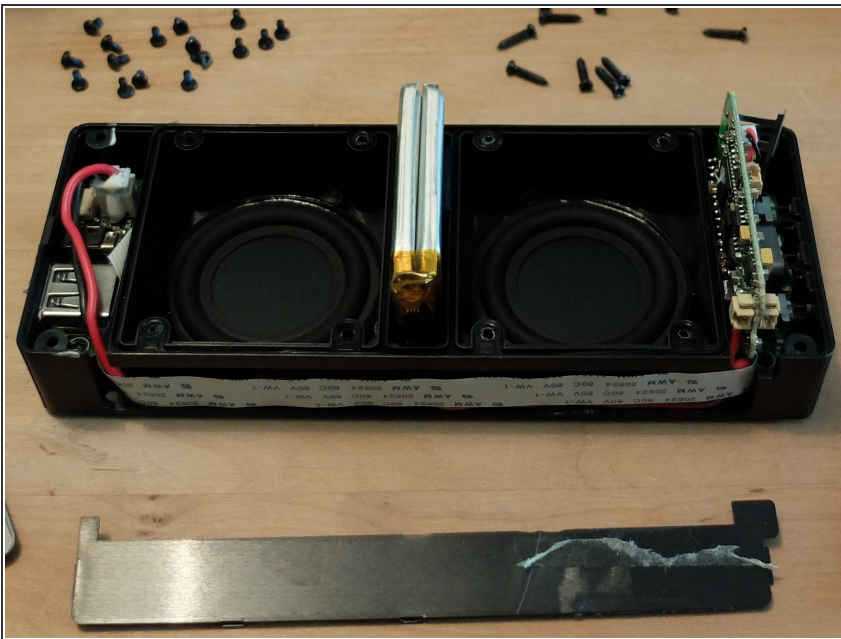
- 12 screws are waiting for you. You need a normal cross-head screwdriver, which also should fit very well because these screws are sitting also very hard for their size. They are in deep holes, so you have no chance with pliers. Do not try with a not good fitting screwdriver, because if you ruined a screw only a drilling machine could help you then.

## Step 5 — Open 3 connectors



- Open carefully the 2 connectors for the 2 speakers and the one for the switch.

## Step 6 — Open the Braven625s case



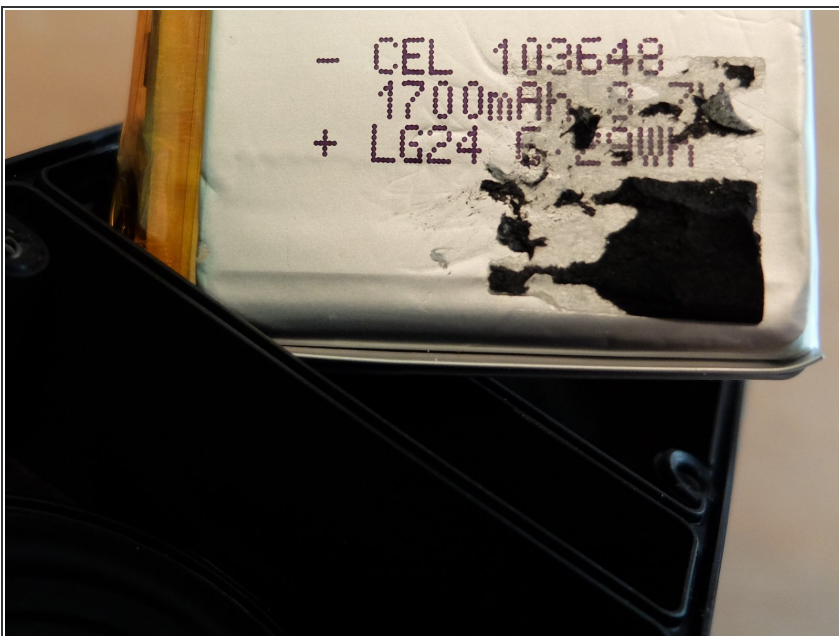
- Now you can open the case and see the accumulator.

## Step 7 — Remove accumulator



- You need to remove a cap and under the ribbon cable you can cut the red and black wire for the accumulator. Cut them close to the accumulator and at different lengths because later on you don't want to have the soldering points side by side.

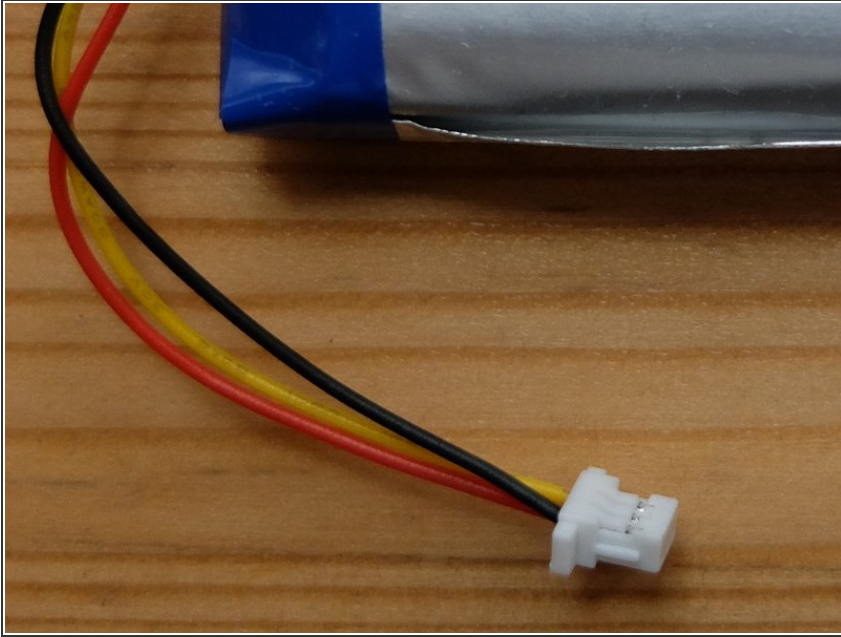
## Step 8 — Space for accumulator



- 50mm x 38mm x 10mm

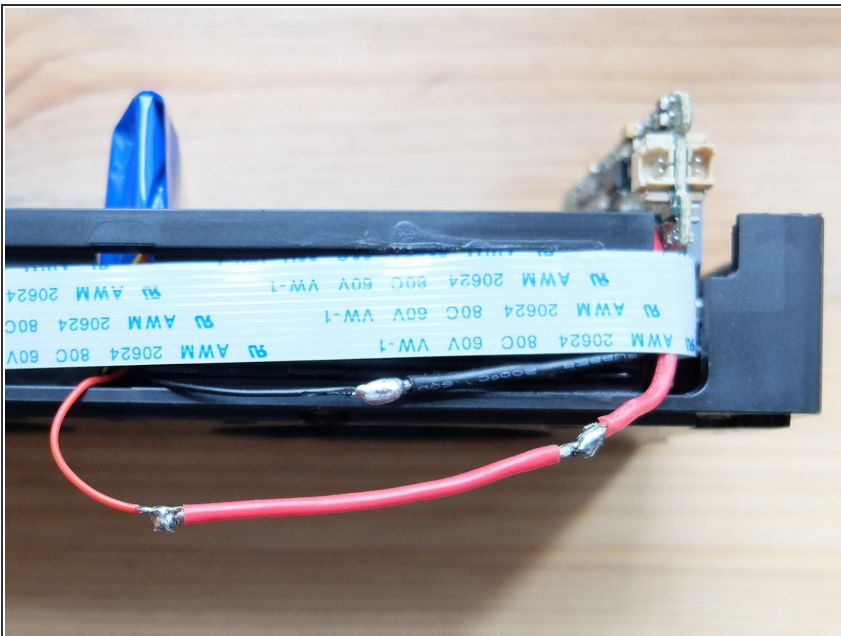


## Step 9 — Mounting the replacement accumulator



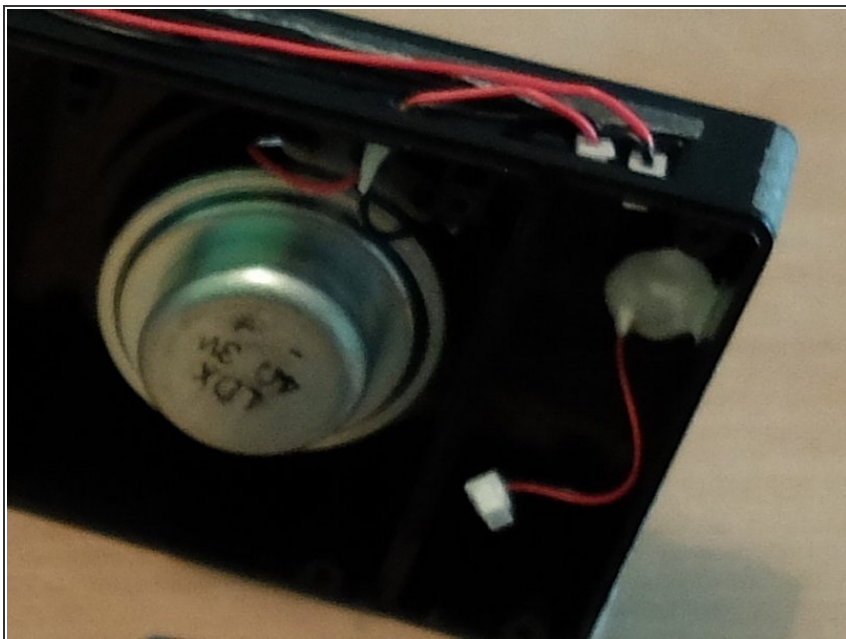
- Cut off the white connector wire by wire. Do not cut the wires in one step to avoid a short circuit for the new accumulator because it comes with some energy inside. Ignore the yellow wire. It is the temperature sensor of the replacement accumulator and not needed here.

## Step 10 — Soldering



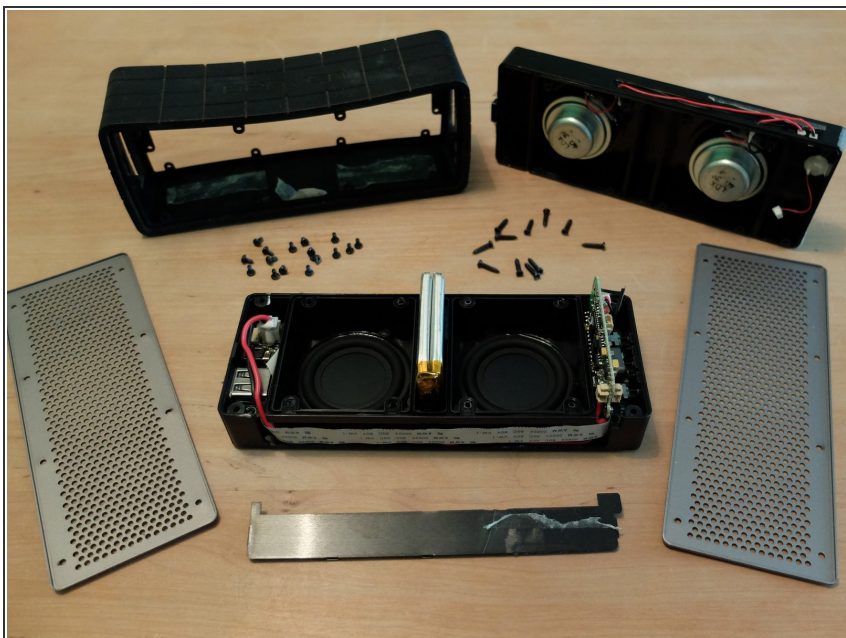
- Do the soldering.

## Step 11 — Check the Braven 625s



- After you connected the 3 opened connectors, you can already check if the box works again.

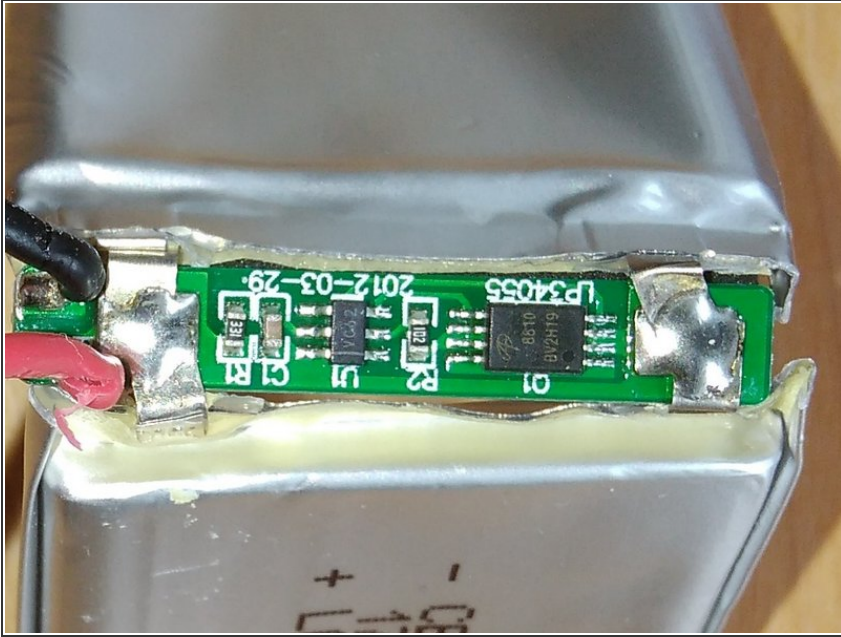
## Step 12 — Close the box



- Close the Braven 625s case performing the open steps backwards



## Step 13 — Replacing only the LiPo cells as alternative



- Alternatively you could stay with the battery management system (BMS) of the original Braven 625s lithium polymer accumulator and use it with 2 new cells only, if you can get them.

Arbeite die Schritte in umgekehrter Reihenfolge ab, um dein Gerät wieder zusammenzubauen.