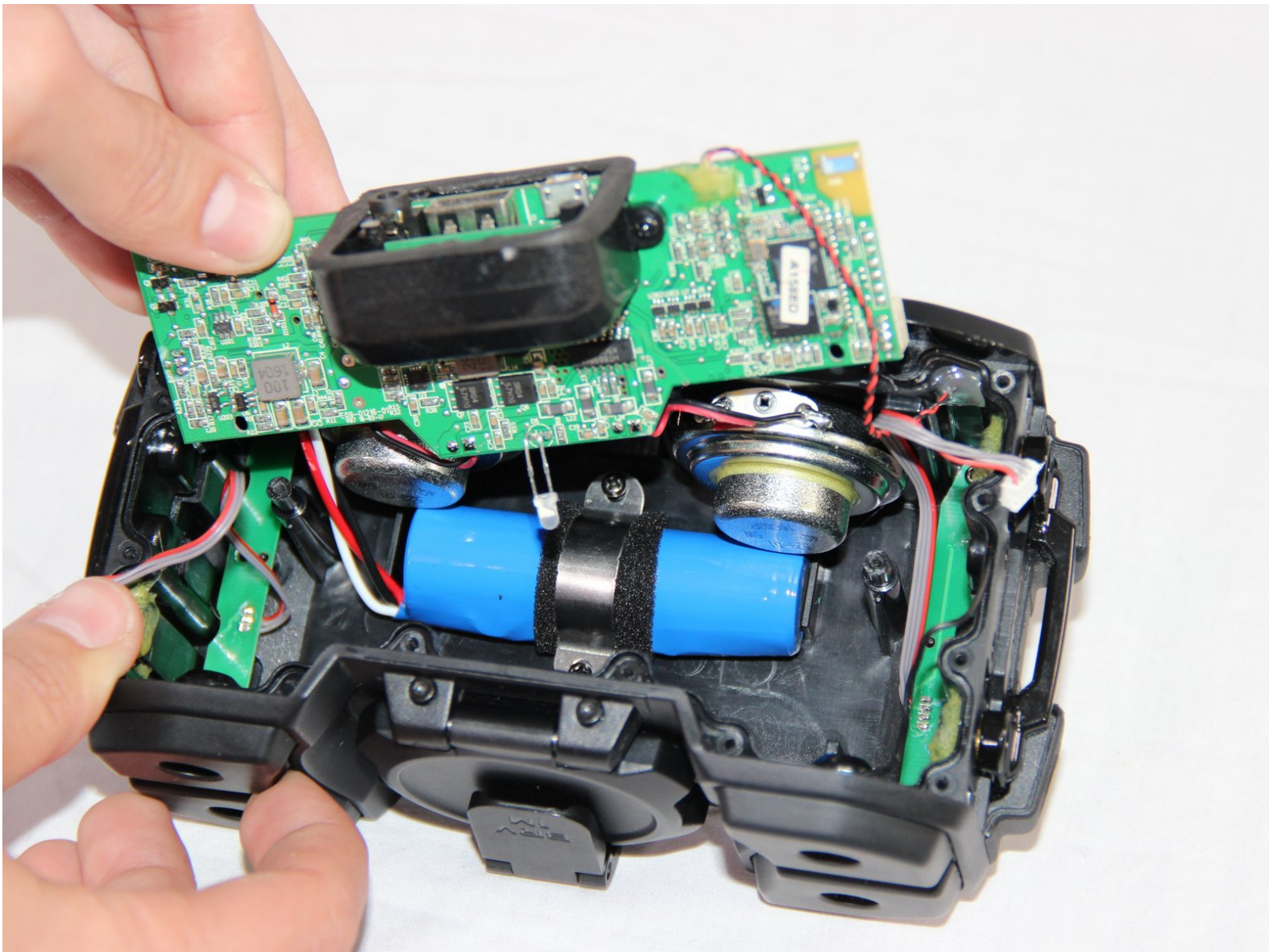




Braven BRV-1M Battery Replacement

A nonexistent battery life can cause complications when powering or using your device. Refer to this guide on the process to change the device battery.

Written By: Erik Oliva



INTRODUCTION

A damaged or disconnected battery can cause unreliable device functionality. One can reference this guide to learn how to successfully replace the battery found within the device and avoid nonexistent battery life.



TOOLS:

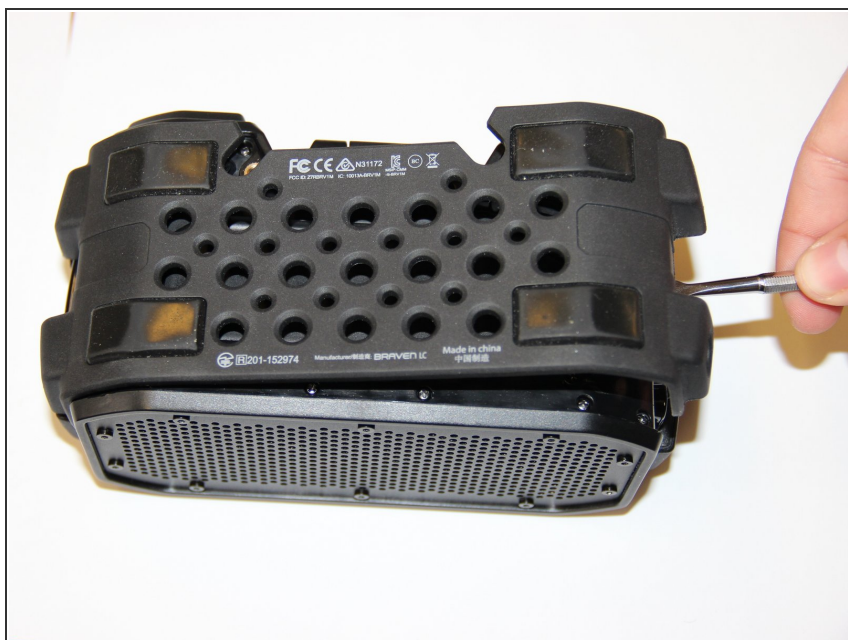
- [64 Bit Driver Kit](#) (1)
 - [Metal Spudger](#) (1)
-

Step 1 — Outer Casing



- To remove the outer casing, use a 3mm Hex bit to remove the 4 large 12mm Hex screws on both sides of the device.

Step 2



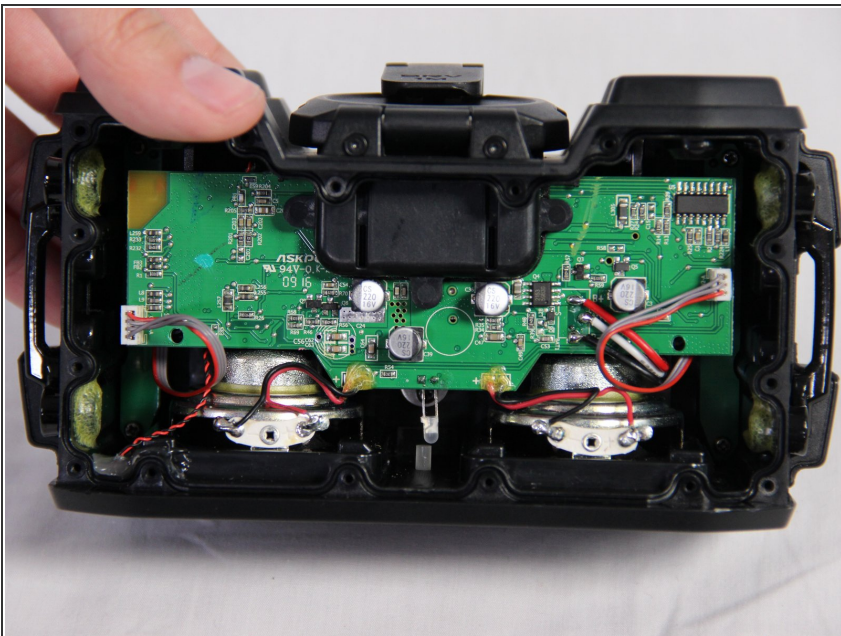
- Using the Metal Spudger, carefully pry each side of the rubber casing away from the device.
- ⓘ A little resistance should be felt, but not enough to bend the spudger.

Step 3



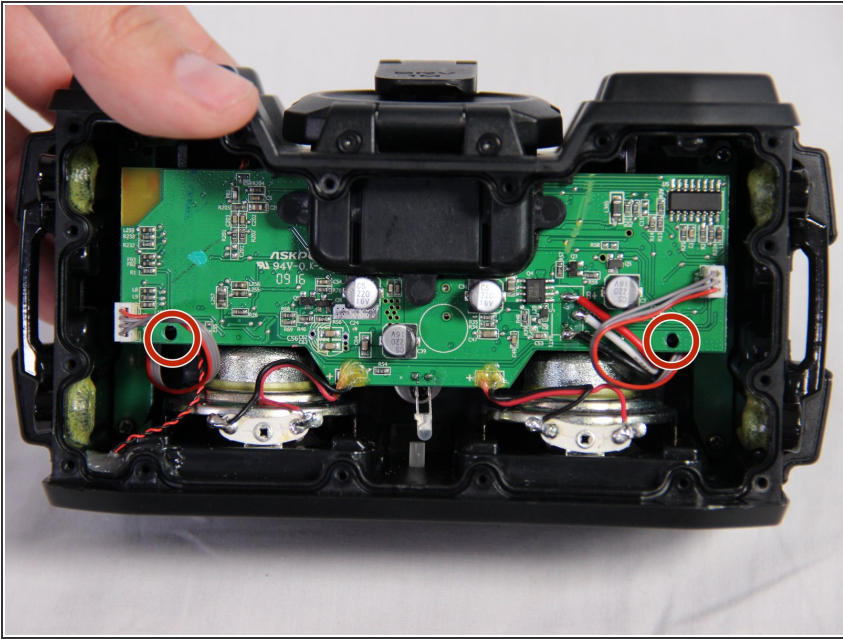
- To remove the inner plastic casing, use a Phillips #00 head bit to remove the 16 small 9mm screws surrounding the top side of the device.

Step 4



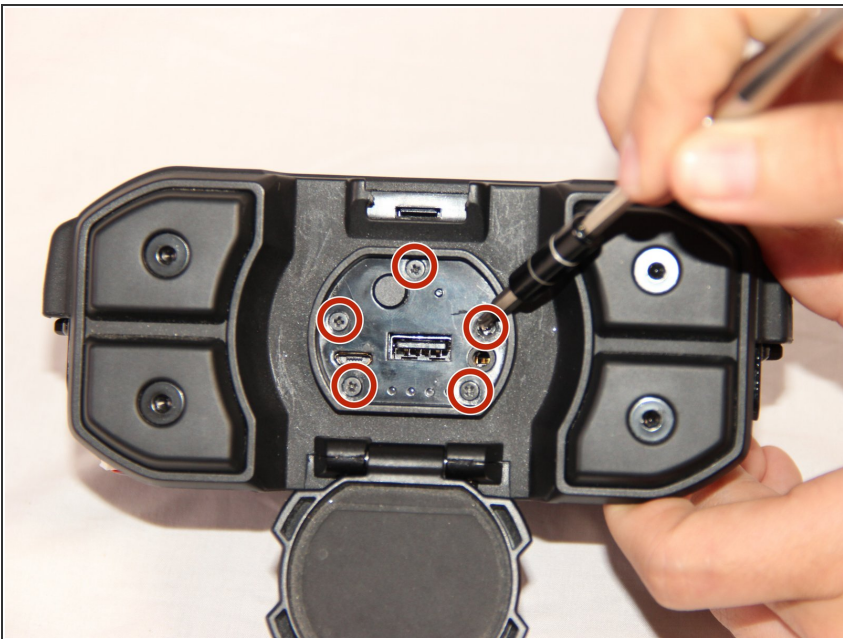
- Carefully lift away the housing and replace the broken casing/component. Replace using the new casing.

Step 5 — Motherboard



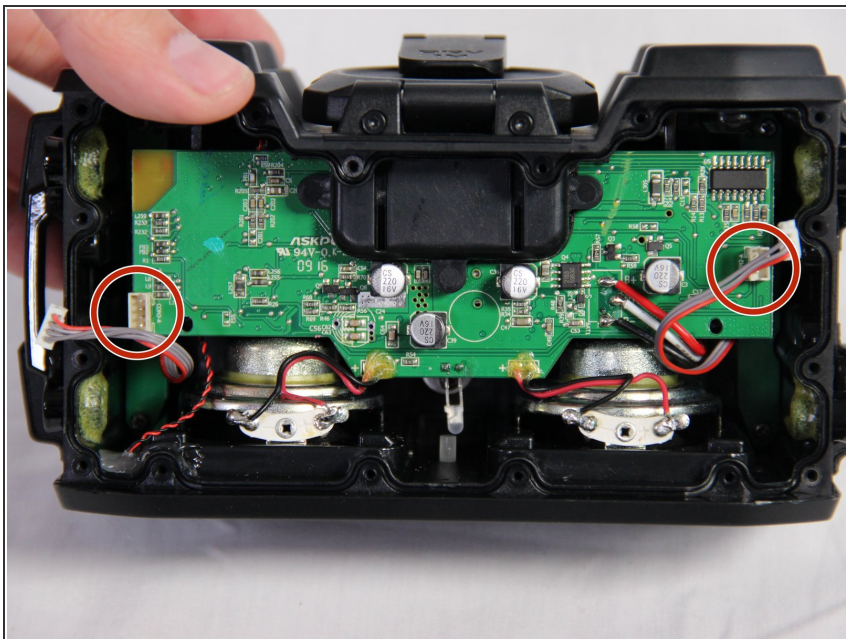
- To remove the motherboard, proceed to unscrew the 3 Phillips #00 bit type, 13mm long screws located on both sides of the motherboard.

Step 6



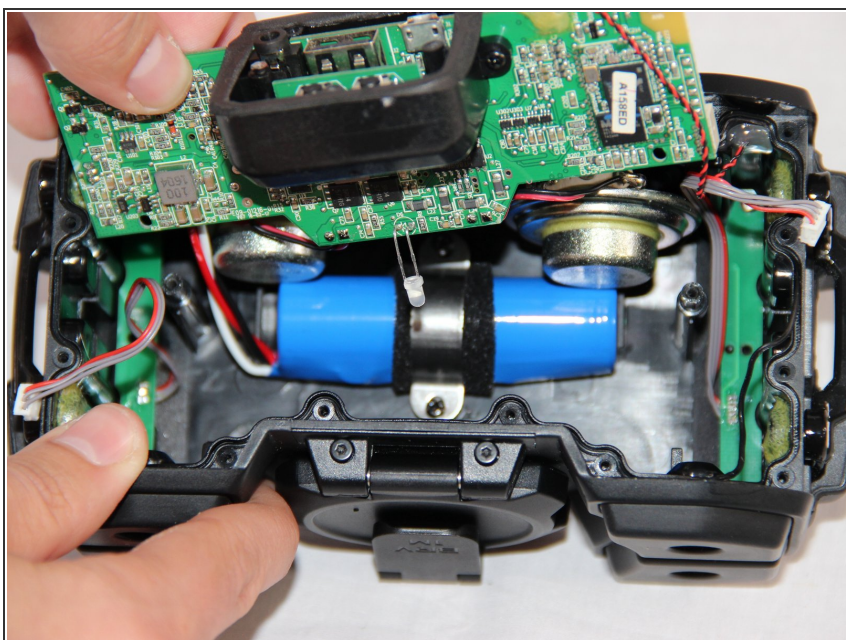
- Then, proceed to unscrew the 5 Phillips #00 bit type, 9mm long screws located on the face of the charging dock.

Step 7



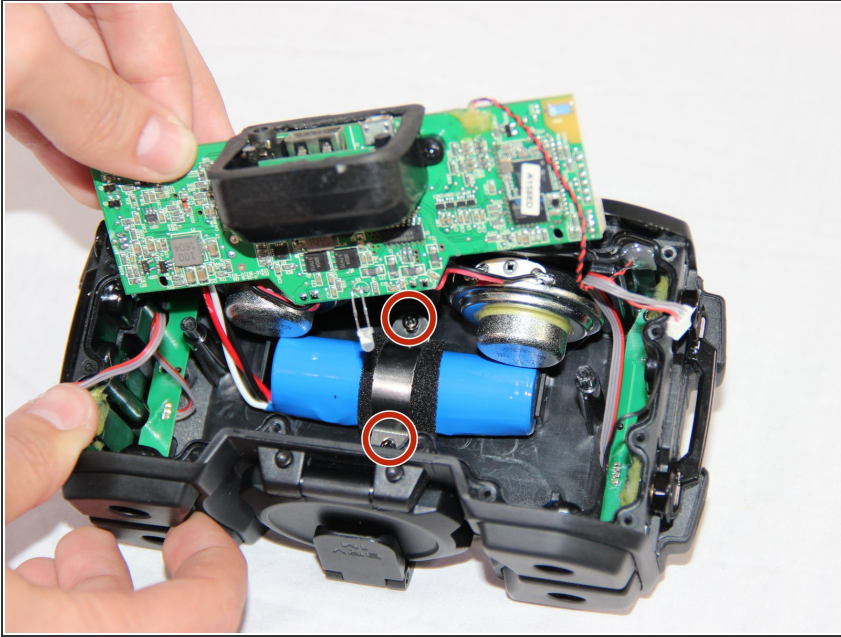
- Disconnect the two 4-pin auxiliary button register cables connected on both sides of the motherboard.

Step 8



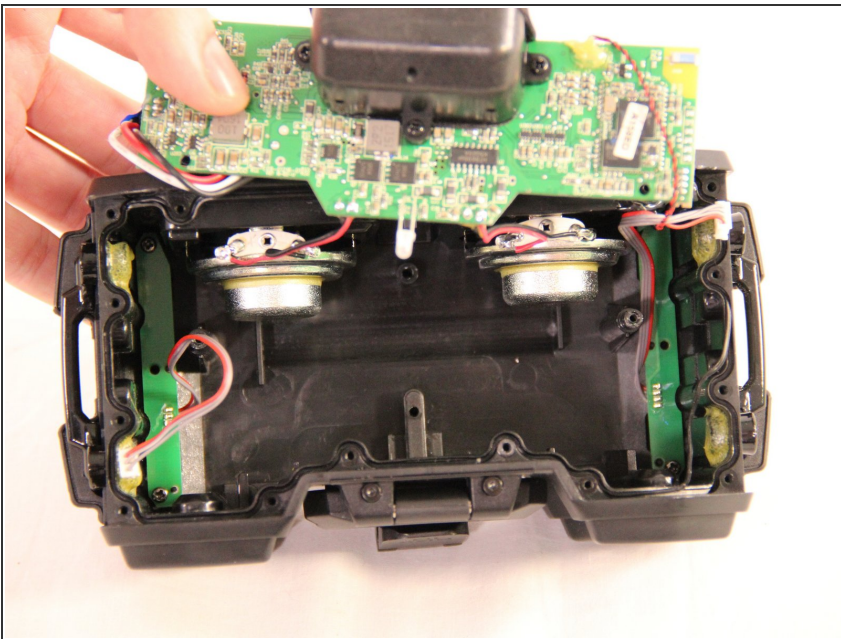
- Once disconnected, carefully remove the motherboard by pulling upwards.

Step 9 — Battery



- To remove the battery, unscrew the 2 Phillips #00 bit type, 9 mm long screws on both sides of the battery.

Step 10



- Gently pull the battery from the housing of the device while disconnecting the red, white and black wires coming from the battery.

To reassemble your device, follow these instructions in reverse order.