



# Braven BRV-1s Auxiliary Ports Replacement

Replace your Braven BRV-1s auxiliary ports. This will effect the water-proof effectiveness of your speaker.

Written By: Jai Blair



---

## INTRODUCTION

Learn how to properly open the Braven BRV-1s case and remove the circuit board to replace your auxiliary ports.

---

### TOOLS:

- [1.5mm Hex Screwdriver](#) (1)
  - [Metal Spudger Set](#) (1)
  - [Soldering Iron](#) (1)
  - [Phillips #0 Screwdriver](#) (1)
-

## Step 1 — Auxiliary Ports



 Please be aware that dismantling your Braven BRV-1s will make it cease to be waterproof.

- Using a 0mm Philips Head screwdriver, unscrew the four 0.9mm screws located on the bottom of your device.

## Step 2




- i** Opening the Braven BRV-1s is very difficult as the case is glued shut. If need be, use a heat pad or other device to heat up and melt the glue.
- Take a metal spudger and insert it into the bottom seam.
  - Work the spudger around the bottom seam making sure that bottom of the speaker is no longer glued onto the rest of the speaker.



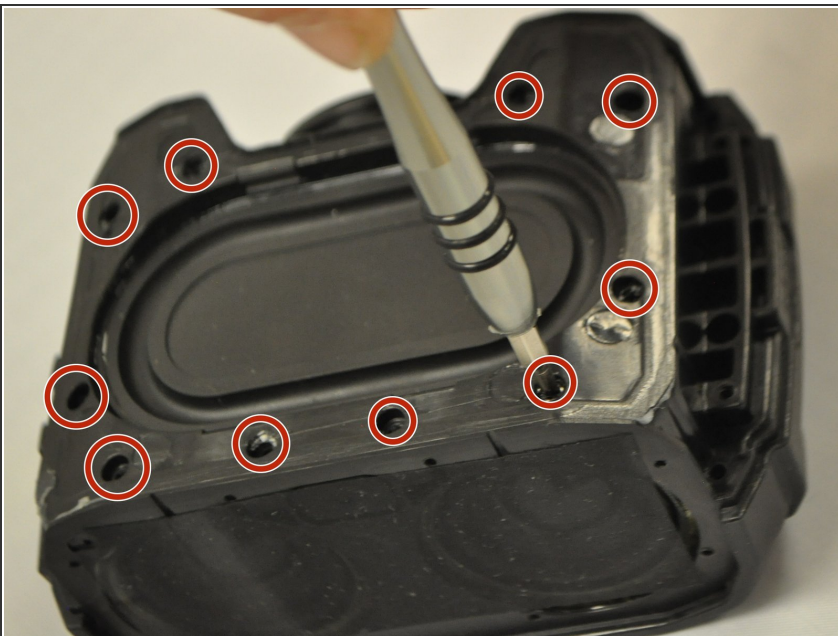
### Step 3



- Pry upward on the spudger until the bottom of the speaker is removed.

 This is very difficult. Be sure to pry with care and avoid prying towards yourself. You will want to pry away from yourself in case the metal spudger suddenly becomes loose.

### Step 4



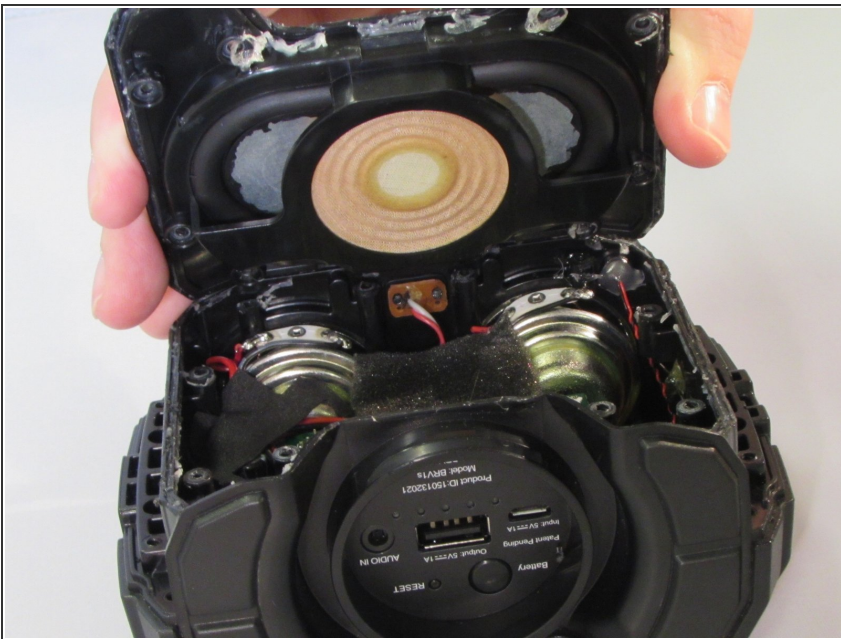
- ① Underneath the bottom of the case you will find the speaker driver, also known as a woofer.
- Using a 0mm Philips Head screwdriver, unscrew the 10 0.6mm screws located around the outside of the woofer.

## Step 5



- ❗ This area is glued down as well. Use a heat pad or other heating device if needed.
- Insert the metal spudger between the seam of the woofer.
- Glide the spudger around the seam to loosen the woofer and get rid of excess glue.

## Step 6



- Pull upward on the woofer until it is removed.

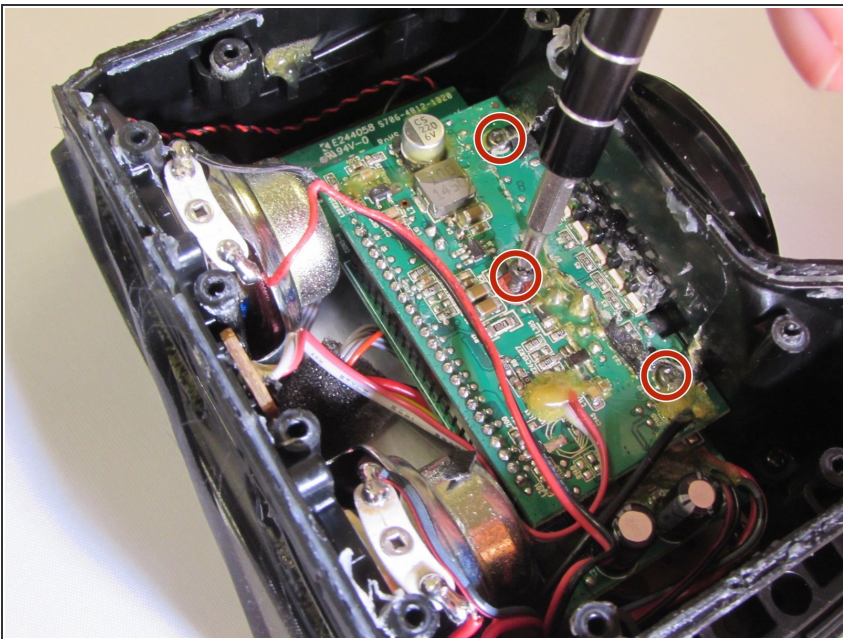


## Step 7



- Remove the foam padding located in the Braven BRV-1s.

## Step 8



- Using a 0mm Philips Head screwdriver unscrew the three 0.6mm screws on the auxiliary circuit board.

## Step 9



- Push the circuit board via the outer auxiliary ports out of the speaker.
- ⓘ You may wish to use a tool to push the circuit board out via one of the auxiliary ports.

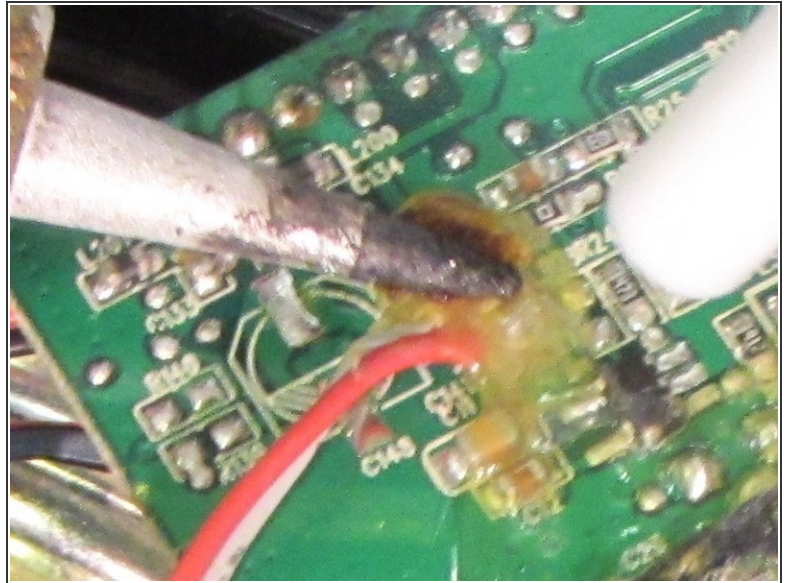
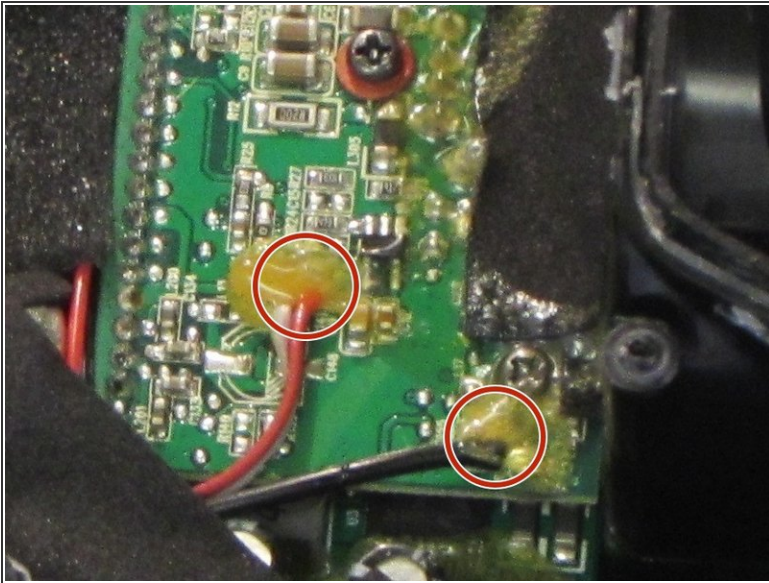
## Step 10



- ⚠ Soldering irons get extremely hot. Be sure to wear proper protective wear and keep it away from exposed skin while it is turned on.
- Turn your soldering iron on to high.

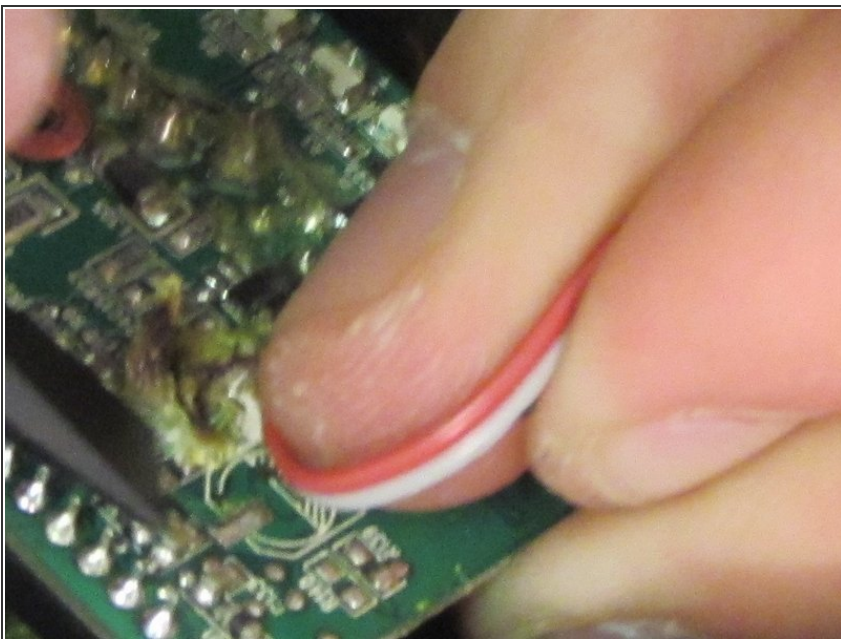


## Step 11



- i You may wish to use a heat gun to melt excess glue around the wires.
- Using the soldering iron, desolder the wires from the circuit board.

## Step 12



- Once you have soldered the glue off, remove the wires by pulling upwards.

To reassemble your device, follow these instructions in reverse order.