



Braven BRV-1s Speaker Cone Replacement

This guide will show the user how to replace a damaged speaker cone.

Written By: Leanne Abel



INTRODUCTION

If your speaker sound is muffled or broken, the speaker cone may be damaged. To solve this problem, you can remove the old speaker cone and replace it with a new part. This guide will show you how to access the speaker cone and remove it. The guide will include the necessary prerequisites needed.



TOOLS:

- [64 Bit Driver Kit](#) (1)
 - [Metal Spudger](#) (1)
 - [Heat Gun](#) (1)
-

Step 1 — Outer Casing



- To remove the outer case, remove 4 phillips screws (Phillips #00 headtype, 9.3mm long)

Step 2



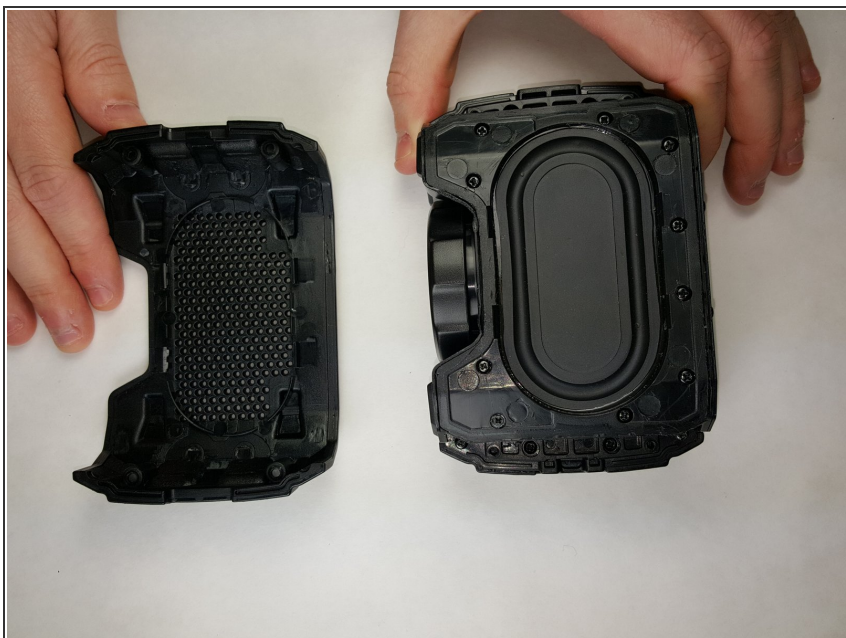
- Using a metal spudger, gently pry the side of the defective case.

Step 3



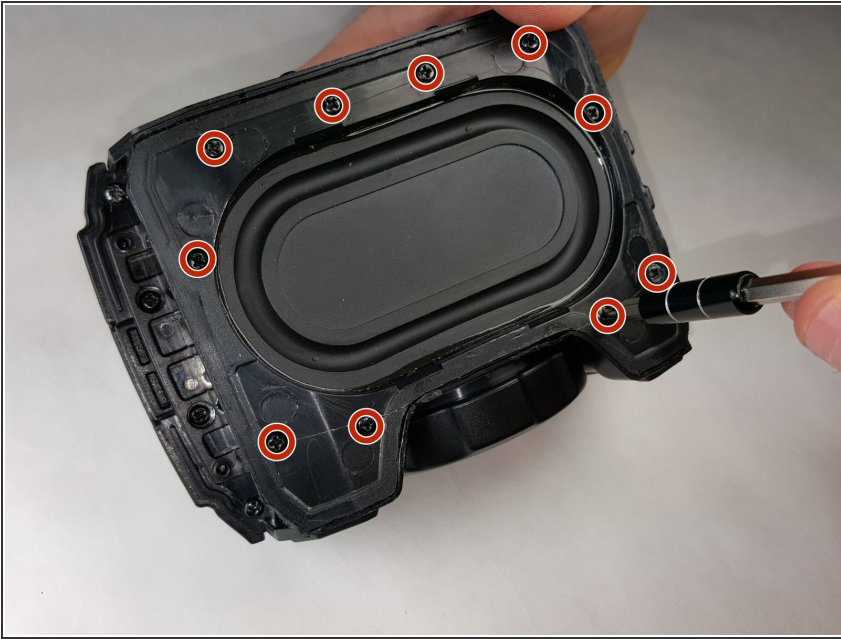
- Still using the metal spudger, continue to work your way around the outer case.

Step 4



- Remove the broken outer case. Replace with used/new out case.
- ⓘ Note that unless properly sealed with glue, the speaker will no longer be water resistant.

Step 5 — Speaker Cone



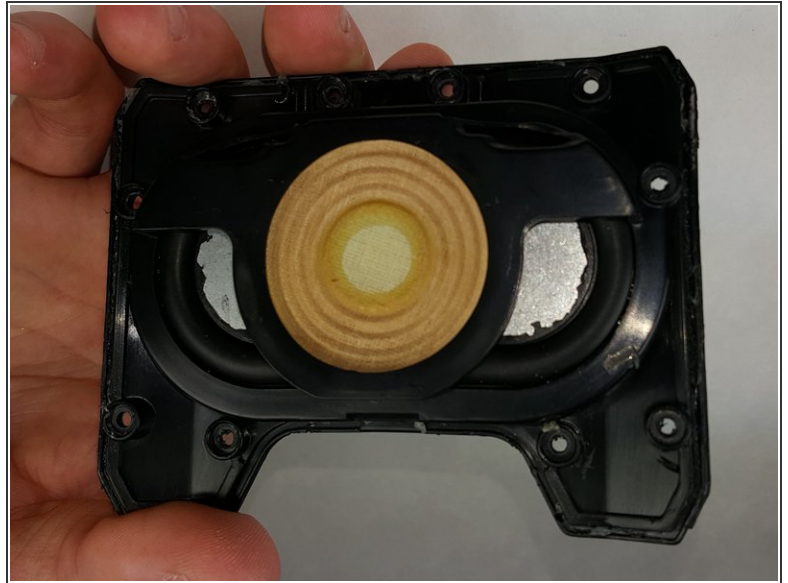
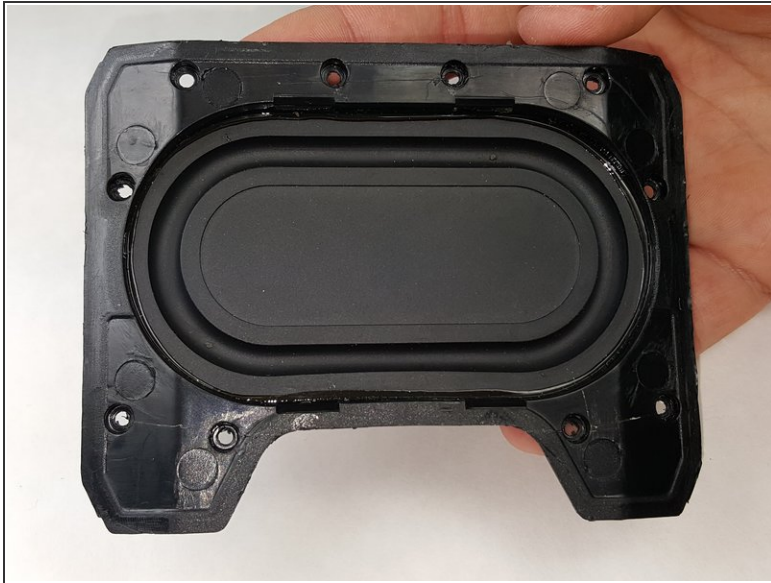
- To remove the speaker cone plate, remove 10 phillips screws (Phillips #00 headtype, 9.3mm long)

Step 6



- Using a metal spudger, gently pry the side of the defective speaker cone plate.
- Remember to pry all around the side of the speaker cone plate.
- Keep in mind that the adhesive will make it difficult to pry the plate off. To loosen the adhesive, heat the plate with a device such as a hair dryer.

Step 7



- Remove the broken speaker cone plate. Replace with used/new out plate.

To reassemble your device, follow these instructions in reverse order.