



# Braven BRV-HD Charging Port Replacement

Follow this step-by-step guide to learn how to remove the charging port from the rest of the device.

Written By: Alex Ku



---

## INTRODUCTION

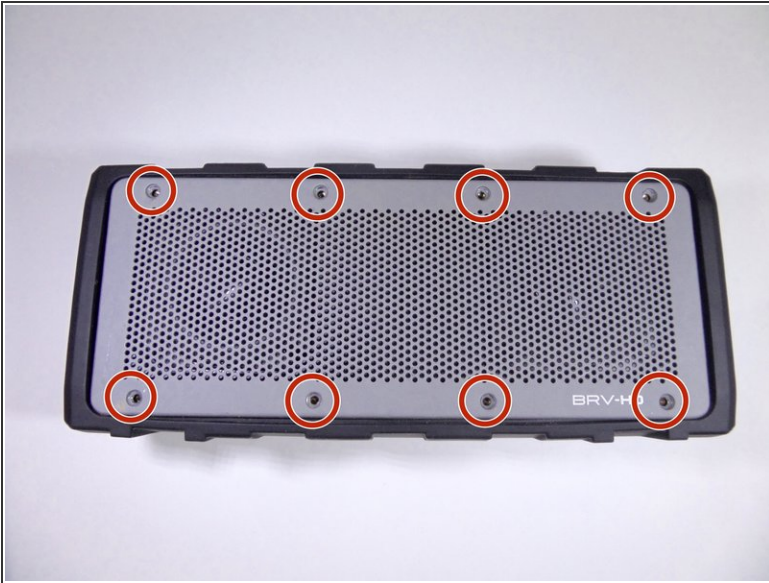
Following this guide will show you how to access and replace the charging port. The Braven BRV-HD Battery Replacement is a prerequisite for this guide.

---

### TOOLS:

- [2mm Hex Key](#) (1)
  - [iFixit Opening Tools](#) (1)
  - [J1 Screwdriver Bit](#) (1)
  - [Pro Tech Toolkit](#) (1)
-

## Step 1 — Battery



- Placing the device on its back with the BRV-HD logo facing up, remove the eight 5mm hexagon 2.0 screws on the front panel.
- ⓘ Make sure the device is turned off before starting.

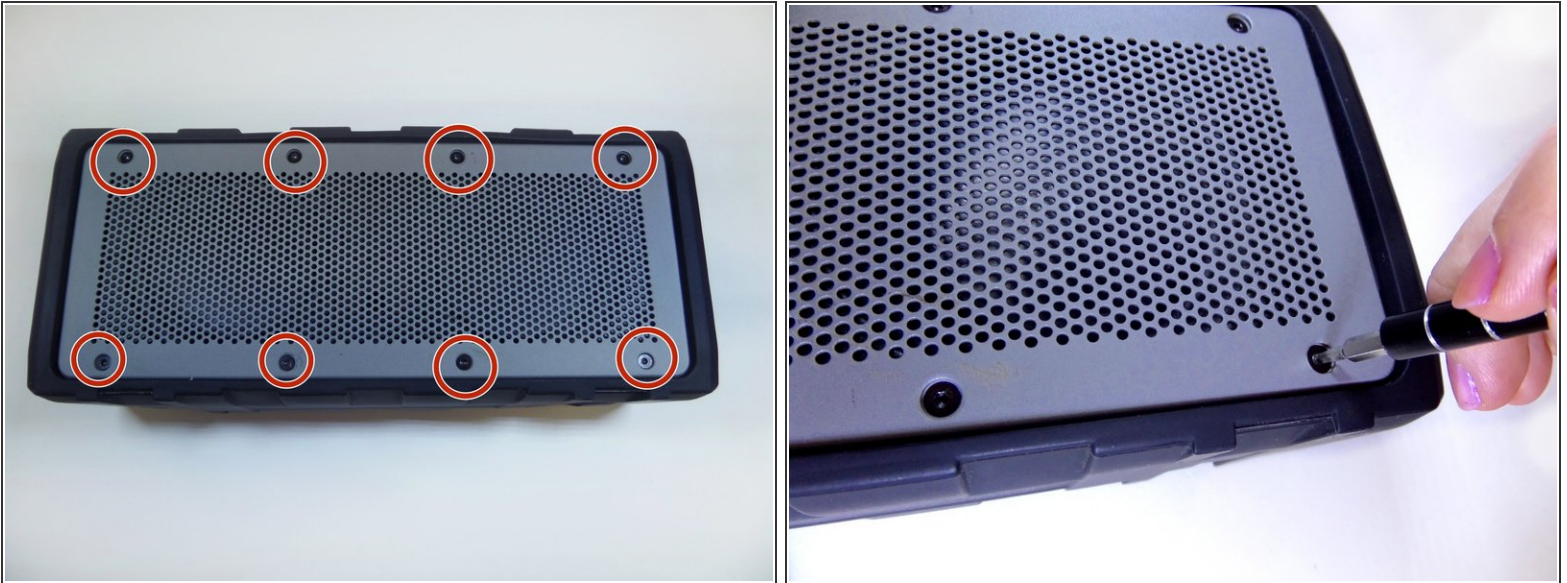
## Step 2



- Lift the front panel off of the speaker using a plastic opening tool.



### Step 3



- Placing the device with the back panel facing up, remove the eight 5mm hexagon 2.0 screws from the back panel.

### Step 4



- Lift the back panel off of the device with a plastic opening tool.

## Step 5



- Turning the device on its side, unscrew the four 15mm hexagon 2.0 screws on the charging port panel.

## Step 6



- Remove the outer rubber flap and the plastic side port panel.



## Step 7



- Place the device on its front.
- Loosen the four 12mm Phillips screws in the four corners with a J1 screwdriver.
- Loosen the two 8mm Phillips screws in the center with a J1 screwdriver.
- ⓘ These screws are difficult to reach and will require a screwdriver extension piece.

## Step 8



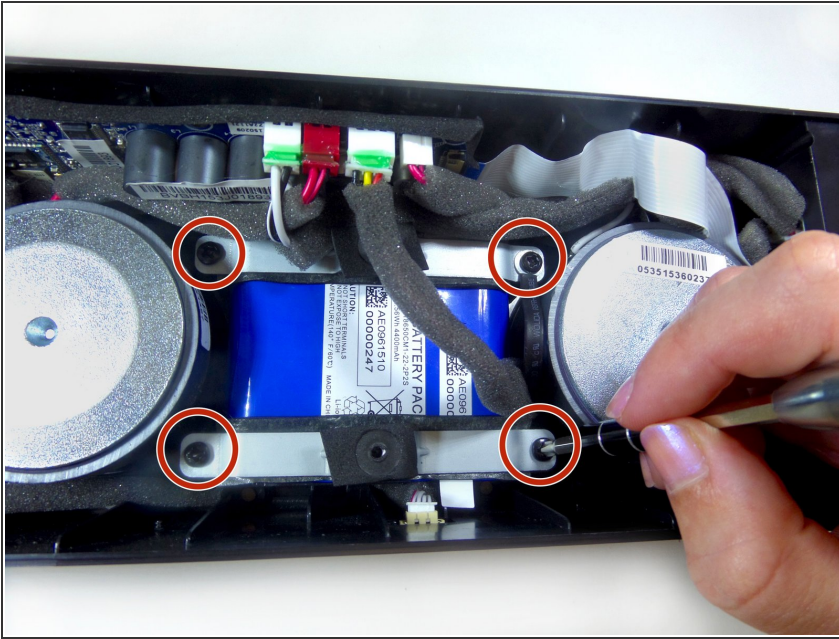
- Pull off the rubber sleeve surrounding the speaker using your hands.
- ⓘ There is adhesive binding the sleeve to the speaker and force will be required to remove the sleeve.

## Step 9



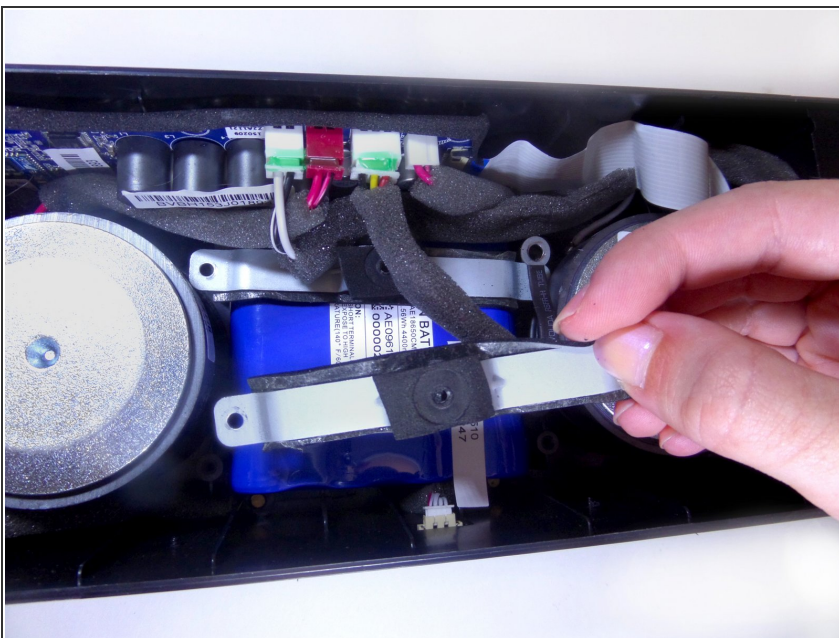
- Lift the black covering off of the speaker using both hands.
- ⓘ Loose screws that you were unable to remove with the screwdriver will be removed when you lift off the black covering.

## Step 10



- Remove the four 12mm Phillips screws securing the two battery brackets with a J1 screwdriver.
- ⓘ Move any wires aside to have better access to the screws securing the battery.

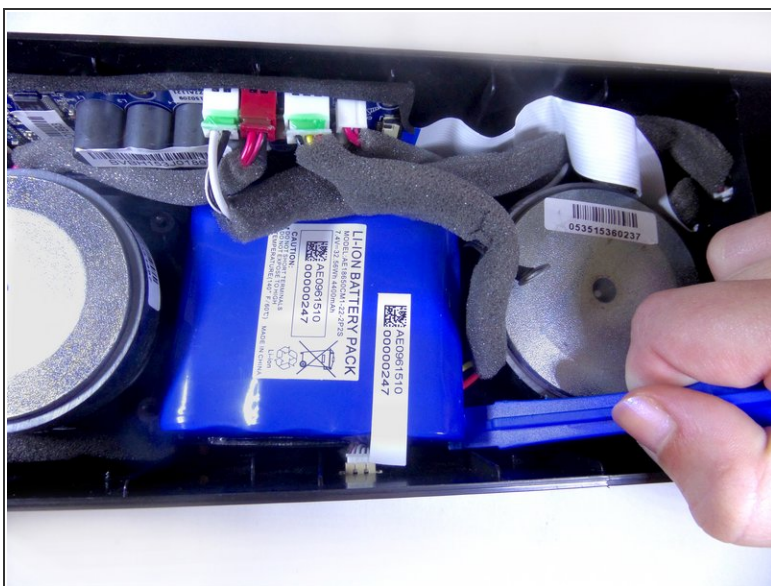
## Step 11



- Remove the two brackets that hold down the battery using your hands.

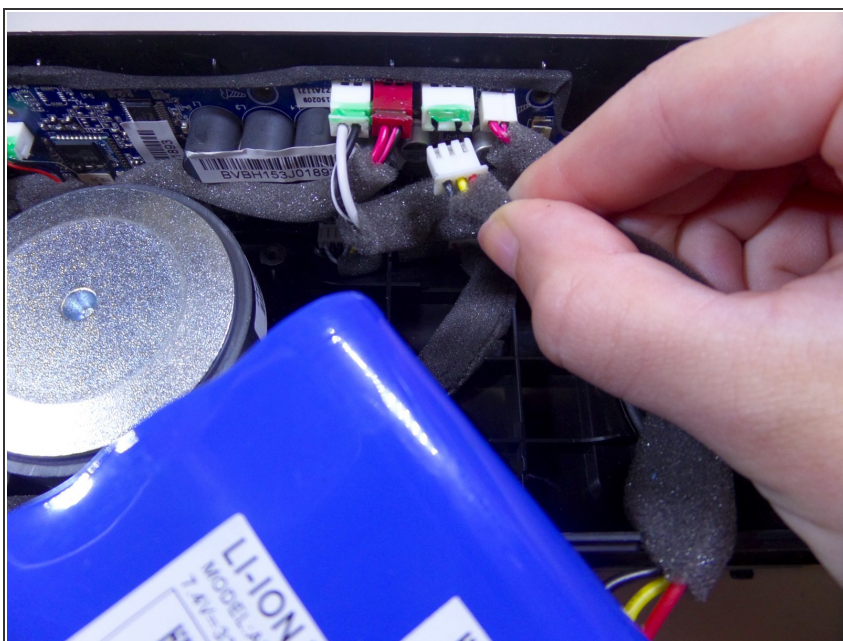


## Step 12



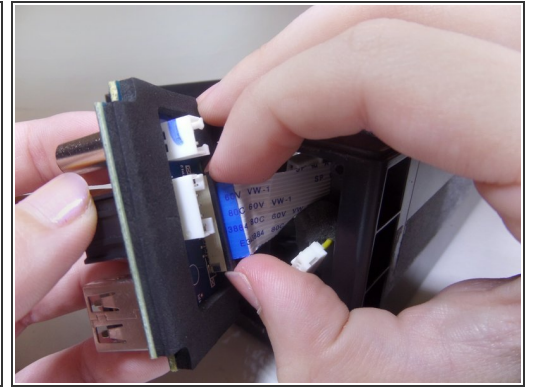
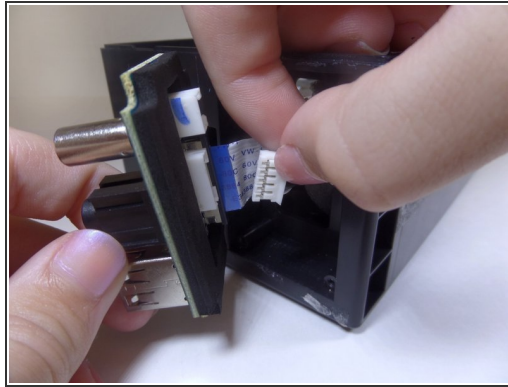
- Use the plastic opening tool to lift up the battery.
  - Remove the battery using your hands.
- i** The wires connecting the battery to the motherboard are still plugged in. Avoid pulling on the battery or these wires may break.

## Step 13




- Disconnect the wire attaching the battery to the motherboard.
- i** There is green glue on the wire ports preventing the wires from falling out. Peel and remove this glue as necessary.
- ⚠** Be careful when pulling out the wires from their ports. The metal stems attached to the ports can break. A spudger or tweezers may help.

## Step 14 — Charging Port



- Disconnect the three plugs attached to the plastic charging port panel.
- Remove and replace the plastic panel with a new one.

 Be careful in removing the 3 plugs as they can break when being pulled out of their white sockets.

To reassemble your device, follow these instructions in reverse order.