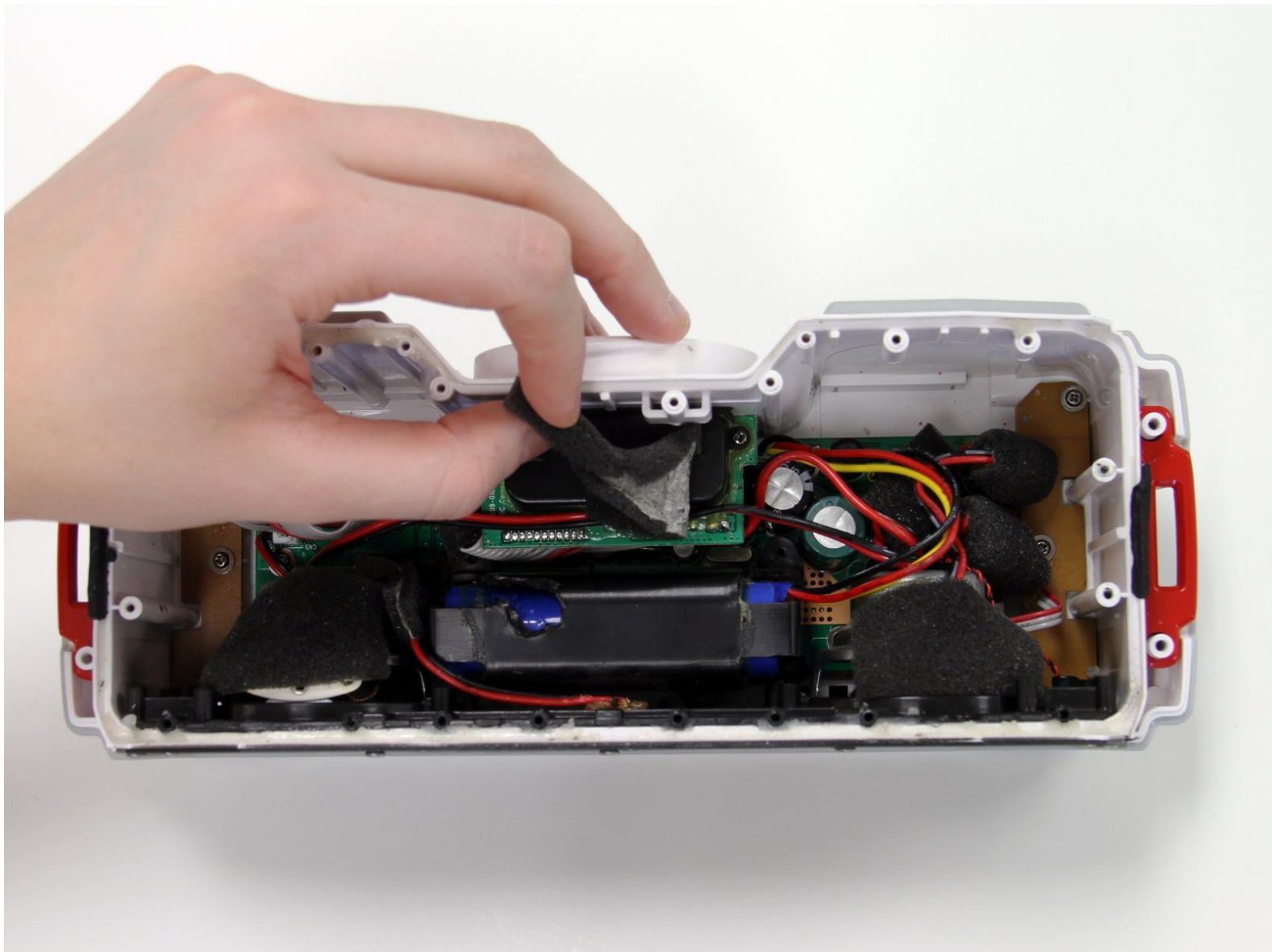




Braven BRV-X Battery Replacement

This guide will show you how to replace the battery in the Braven BRV-X.

Written By: Courtney Crockett



INTRODUCTION

This is a step-by-step guide demonstrates how to remove the battery.

WARNING: This is a lithium battery which should be handled with care.

TIPS:

- Be sure to check the screwdriver heads before performing this task; otherwise, screws may become damaged.
- Use an ice cube tray or egg carton, place each screw in its own cup to organize the screws.



TOOLS:

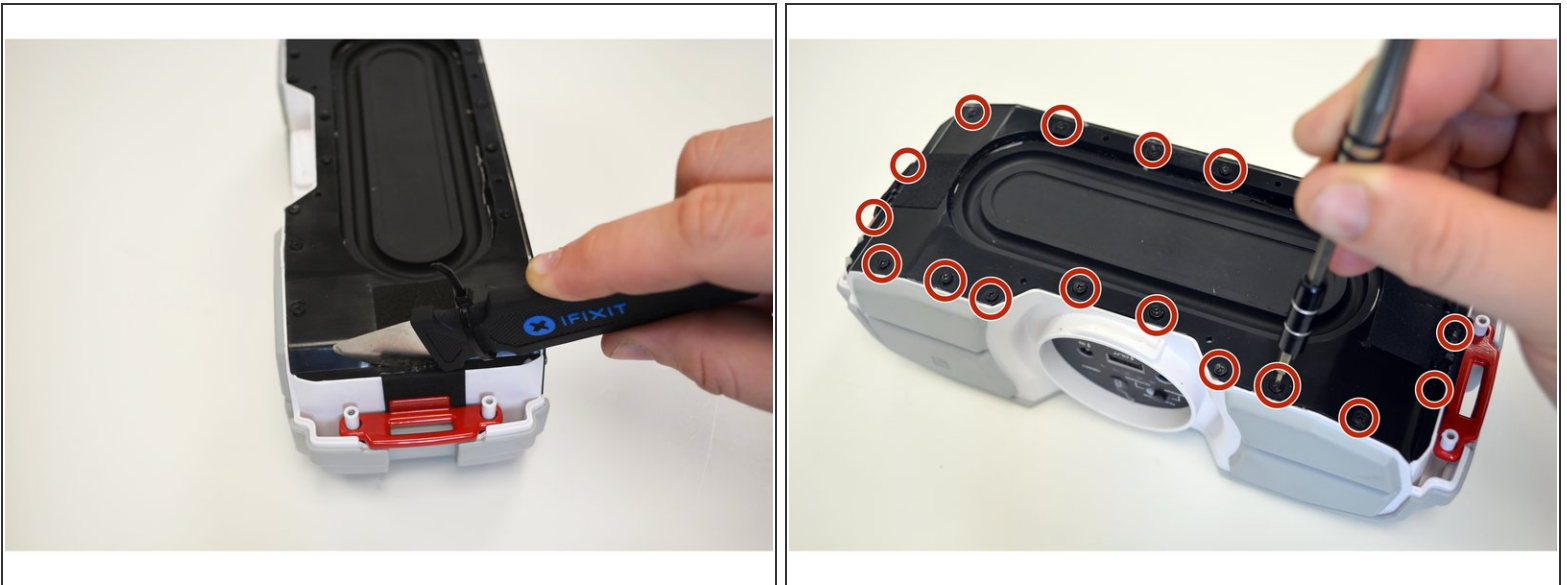
- [H1.5 Head Screwdriver](#) (1)
 - [Jimmy](#) (1)
 - [iFixit Opening Tools](#) (2)
 - [Phillips #00 Screwdriver](#) (1)
 - [Phillips #0 Screwdriver](#) (1)
 - [Tweezers](#) (1)
 - [iFixit Tech Knife](#) (1)
 - [64 Bit Driver Kit](#) (1)
-

Step 1 — Bottom Outer Casing



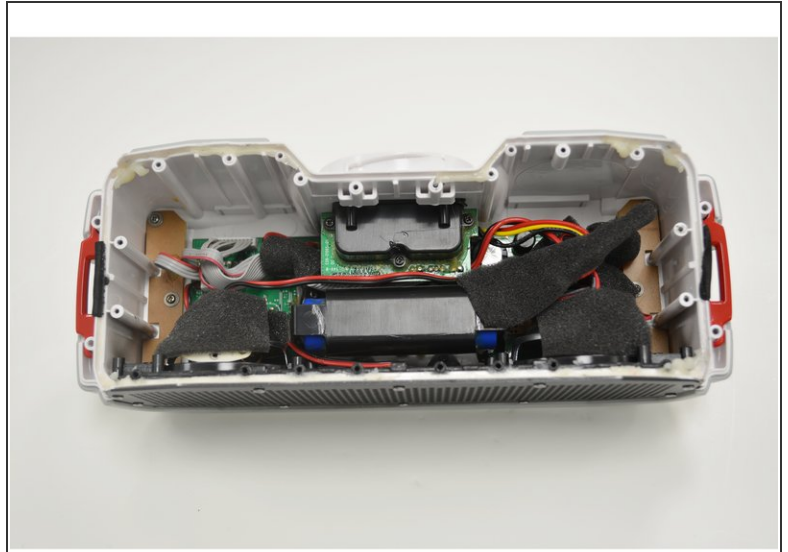
- Flip the Braven BRV-X upside down so you are facing the bottom side.
- With the H1.5 Head Screwdriver, unscrew the four screws.
 - ⚠ **All screws on this device can be stripped easily.** Hold your screwdriver with the thumb on top and swivel with the opposite hand's thumb and index finger.
- Using the #0 Phillips screwdriver, unscrew the four screws on the four corners of the bottom side.
- Gently remove the outer casing, which should reveal the inner shell.

Step 2



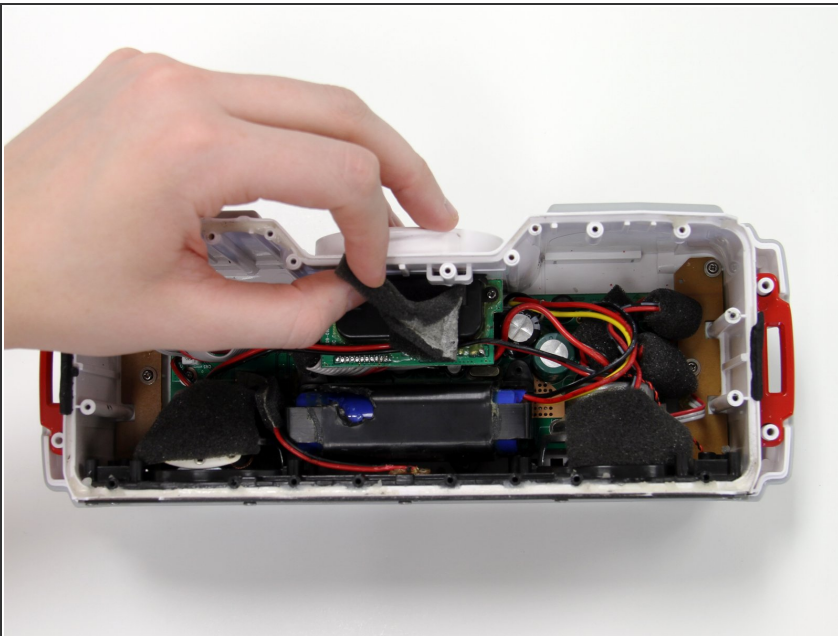
- With a Jimmy, cut the two warranty seals on either side.
 - ⓘ You may also use a tech knife instead of a Jimmy.
- ⚠ **WARNING:** Once warranty seals are broken, you may no longer return the product.
- Next, remove the 18 screws with a #00 Phillips screwdriver.

Step 3



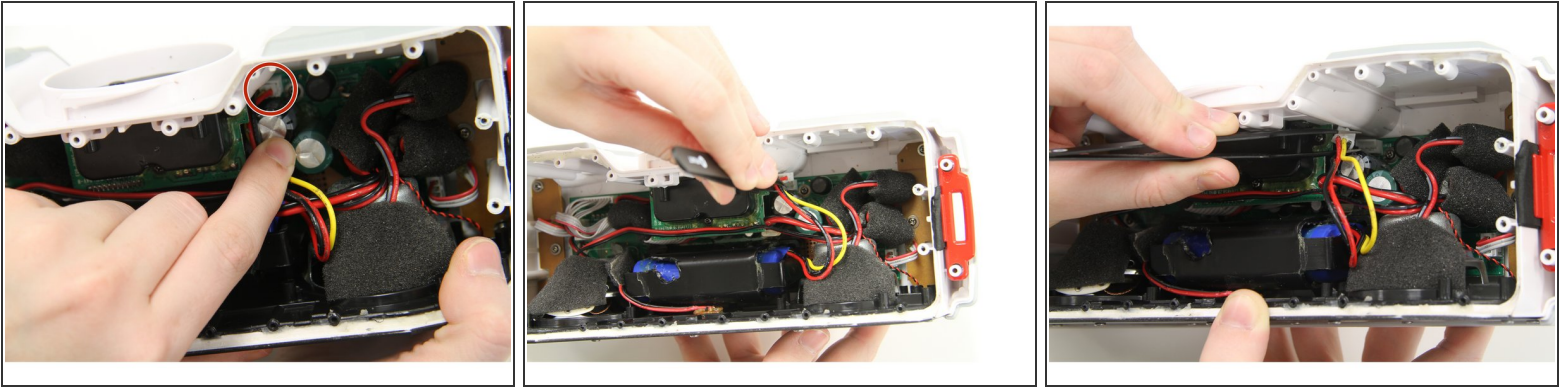
- Using two plastic opening tools, slide under the cover and slowly lift.
- ❗ There is glue nearly all around the inner shell, so strength will be necessary. When both tools are inserted, you can slide out along the edges.

Step 4 — Battery



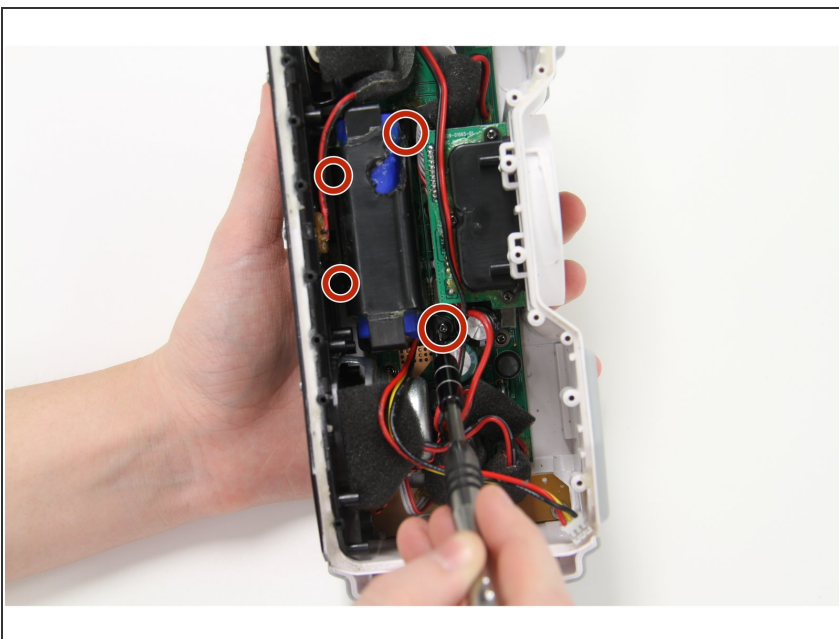
- Remove the black foam squares from the red, yellow, and black wire on the top right side of the device.

Step 5



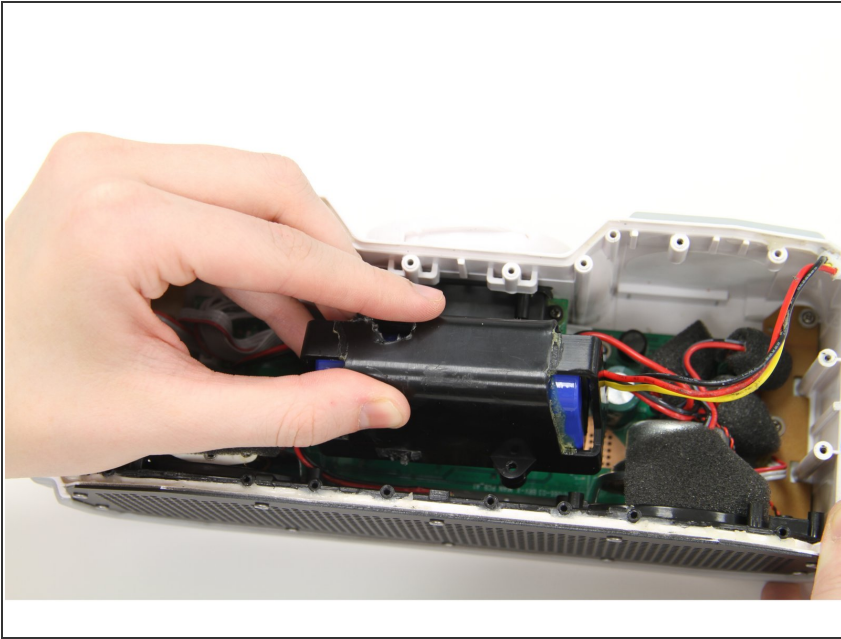
- Now that the three wires are exposed, follow the wires to the white base that is plugged into the motherboard.
 - Using the tech knife, carefully remove the glue that keeps the plug in place.
 - Using the tweezers, carefully disconnect the plug from the motherboard.
- ⚠ WARNING: Make sure the battery is drained of all power for safety reasons.
- ⓘ There should still be a small white base attached to the motherboard, where the plug will eventually be plugged back in.

Step 6



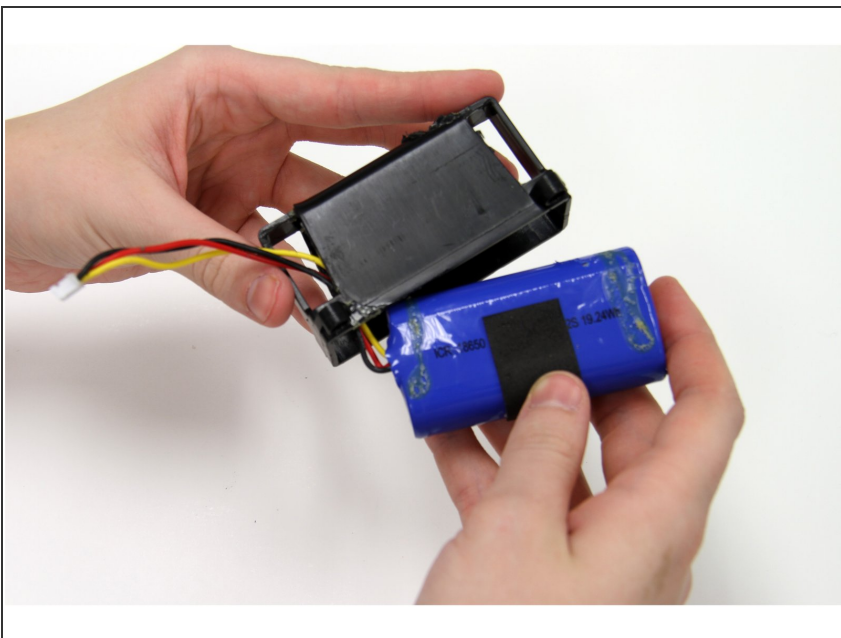
- The battery's black shell is connected to the motherboard with four screws. Use the #00 Phillips screwdriver to remove the four screws.
- ⚠ The screws near the speaker side of the device will be a tight squeeze to get to.

Step 7



- Now, you should be able to lift the battery along with the black container up.
- ⓘ Pull the battery pack straight out so you do not damage other wires or the motherboard.

Step 8



- Slide the blue battery out from the black container. Your battery is now removed from the device and is ready for replacement.

To reassemble your device, follow these instructions in reverse order.