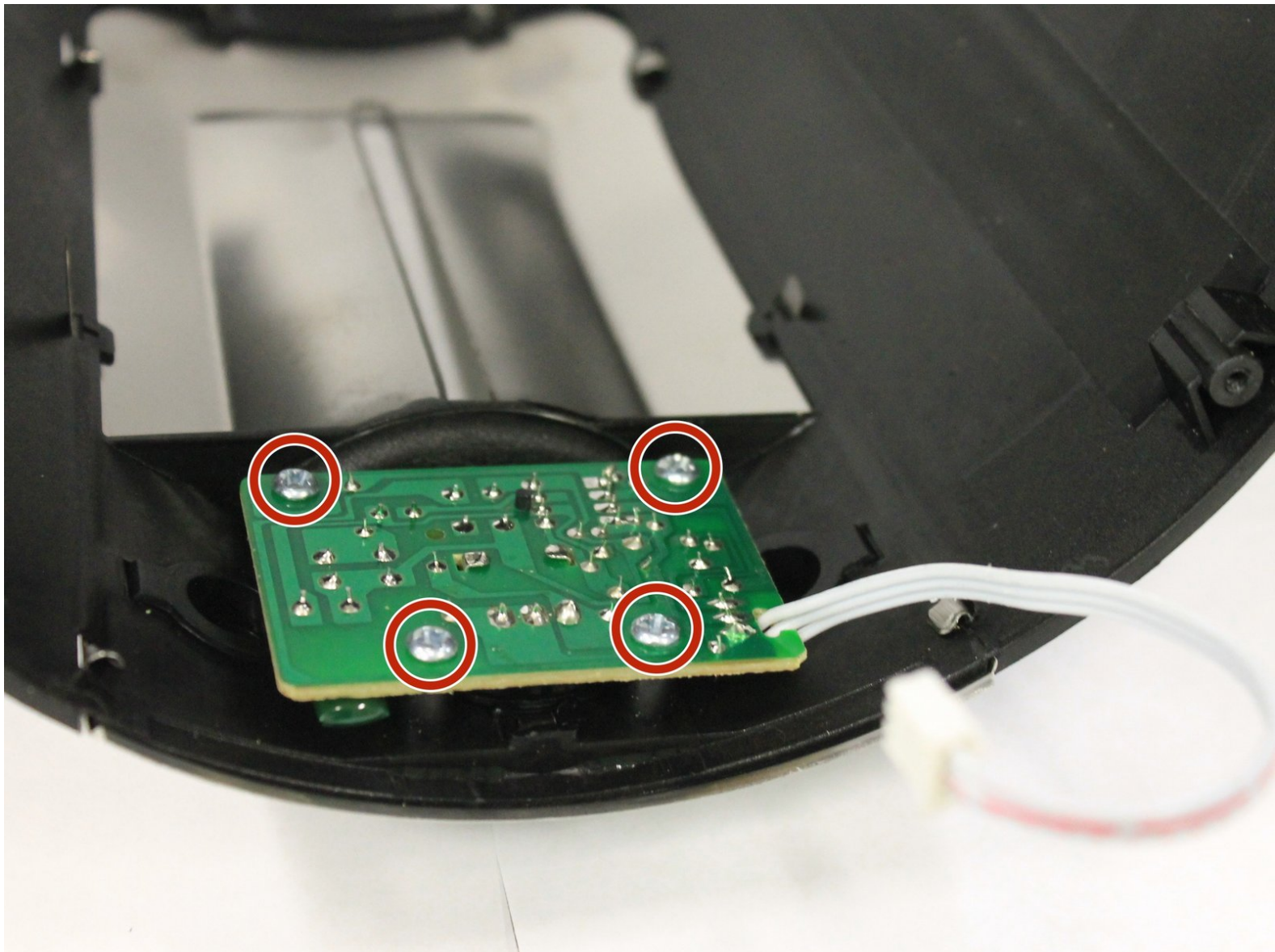




Brentwood TS-292B Browning Dial Circuitboard Replacement

In this guide, we will replace the browning dial circuitboard on the Brentwood TS-292B Toaster.

Written By: Elly Ayala



INTRODUCTION

This guide will show how to remove and replace the browning dial/circuit of the Brentwood TS-292B.



TOOLS:

- [Phillips #2 Screwdriver](#) (1)
-

Step 1 — Browning Dial Circuitboard



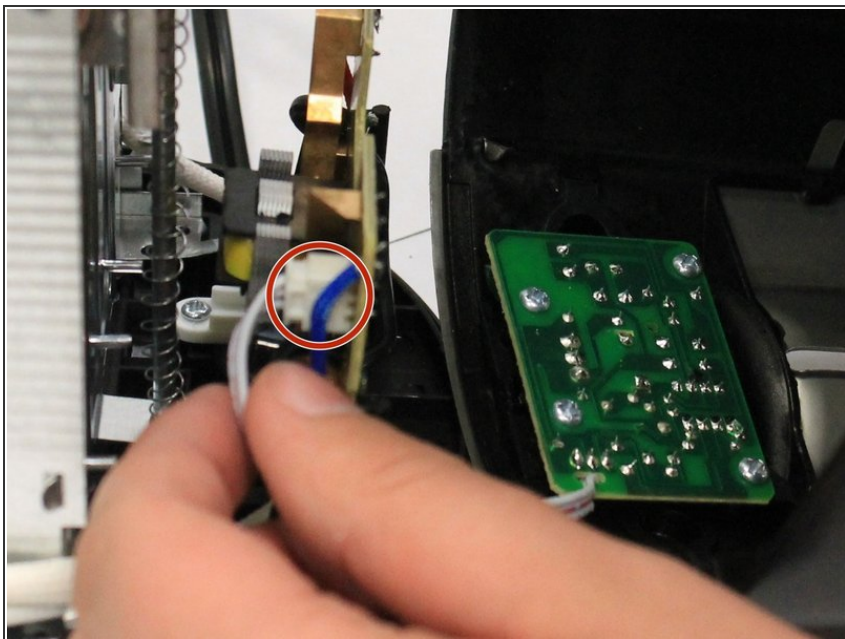
- Remove the five screws indicated using a Philips head screwdriver.

Step 2



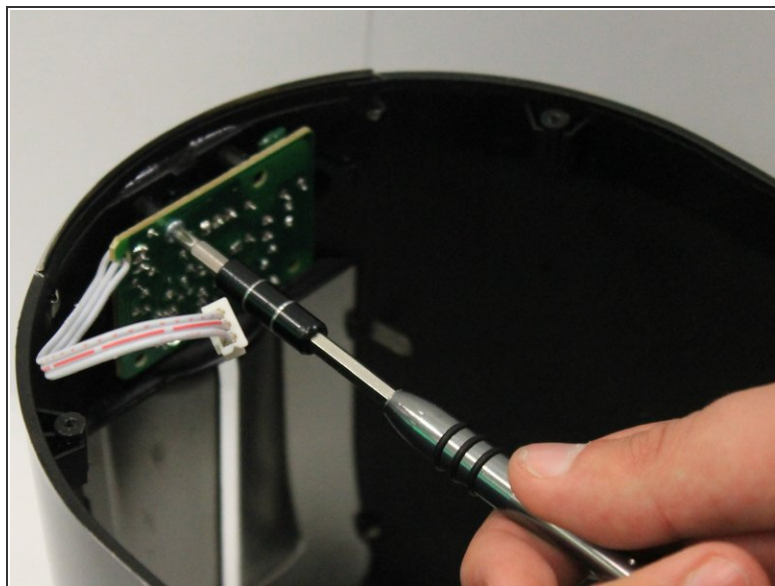
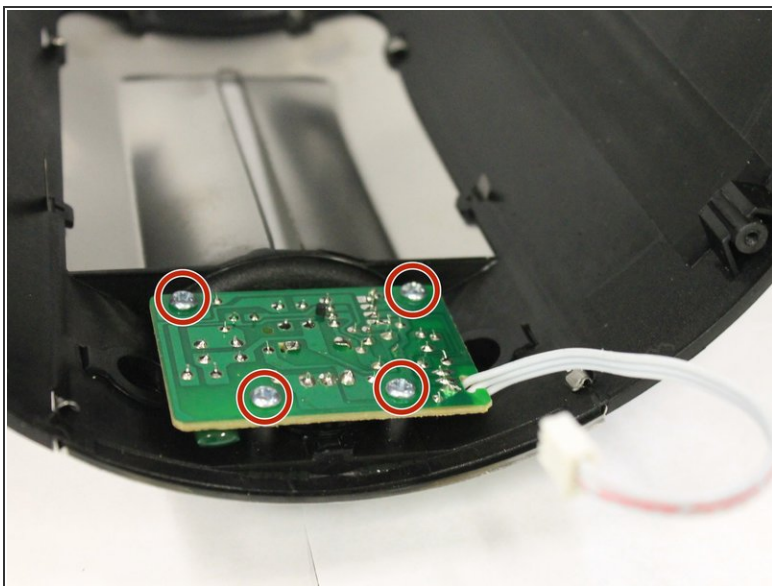
- Pull hard on the browning lever until it detaches from the toaster.
- It will take some force to pull it off.
- Once the tab is off, lift up on the housing to remove it from the toaster.

Step 3



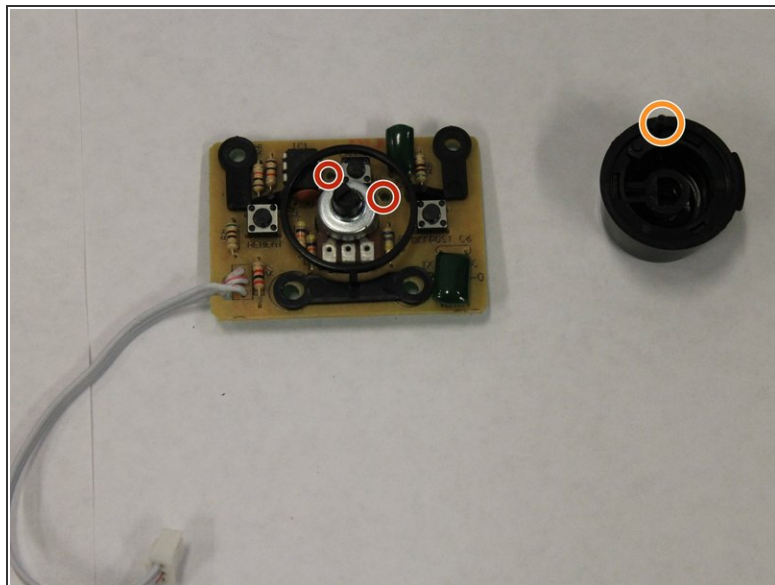
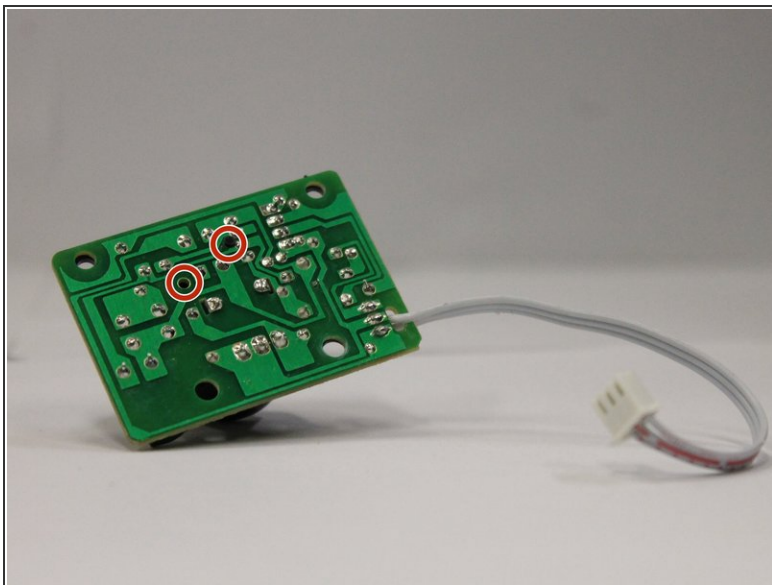
- Once the housing has been pulled upwards, carefully unplug the wire connecting the browning dial circuit board to the main circuit board.

Step 4



- There are four screws on the circuit board for the browning dial.
- Unscrew each of them with a Philips head screwdriver to detach the board and remove the board and dial from the toaster housing.

Step 5



- There are two holes on the board where the pin from the browning dial can align.
- ⓘ Refer to the images if you are having trouble finding them.
- Replace the browning dial by inserting the pin on the dial into one of the holes indicated.
- Replace the entire circuit board if need be.

To reassemble your device, follow these instructions in reverse order.