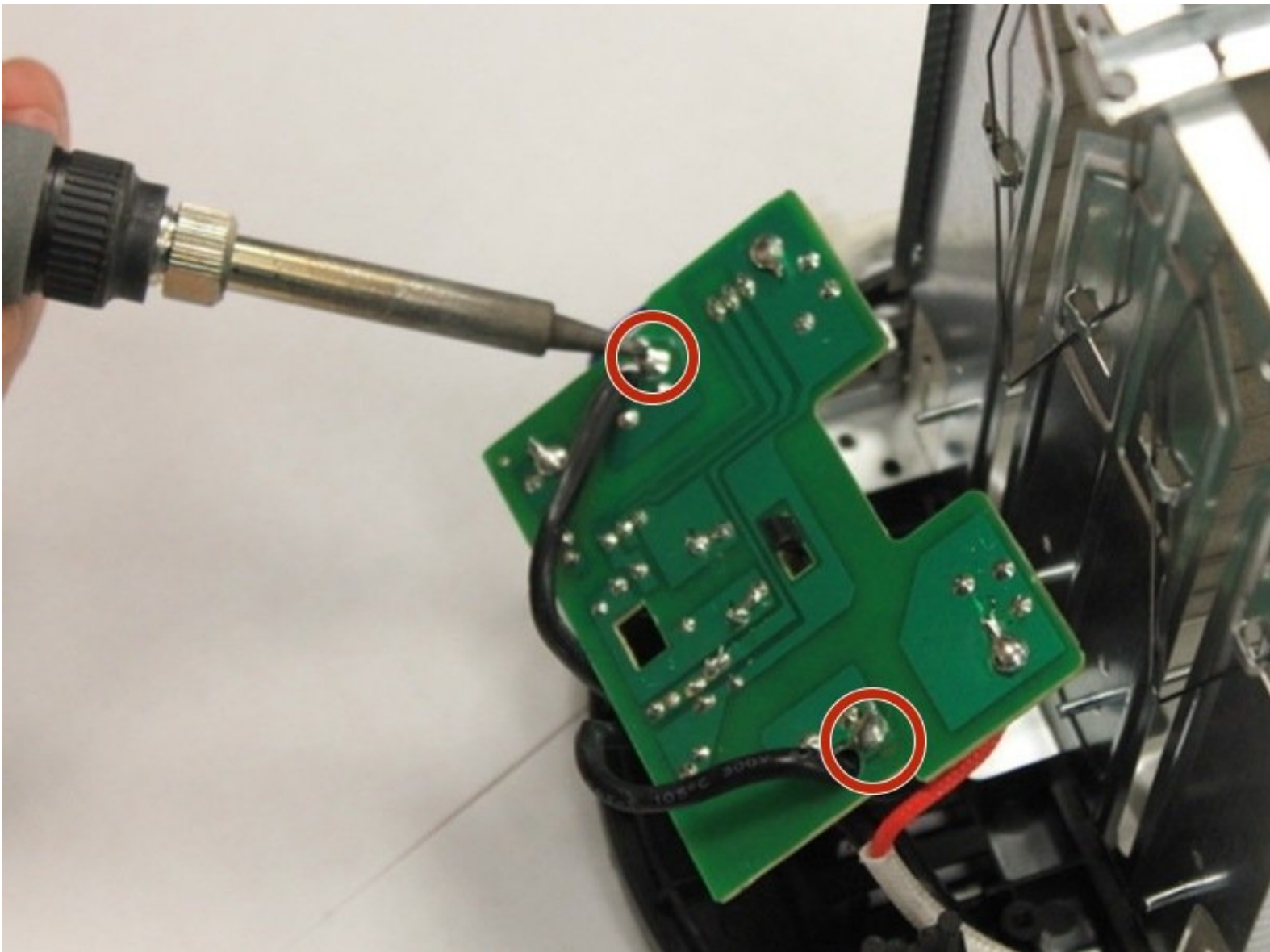




Brentwood TS-292B Power Cable Replacement

Remove and replace the power wire in a Brentwood TS-292B toaster.

Written By: Elly Ayala



INTRODUCTION

This guide will show how to remove and replace the power wire in a Brentwood TS-292B toaster.



TOOLS:

- [Phillips #2 Screwdriver](#) (1)
- [Soldering Iron](#) (1)



PARTS:

- [Power cord with open wire](#) (1)

Step 1 — Power Cable



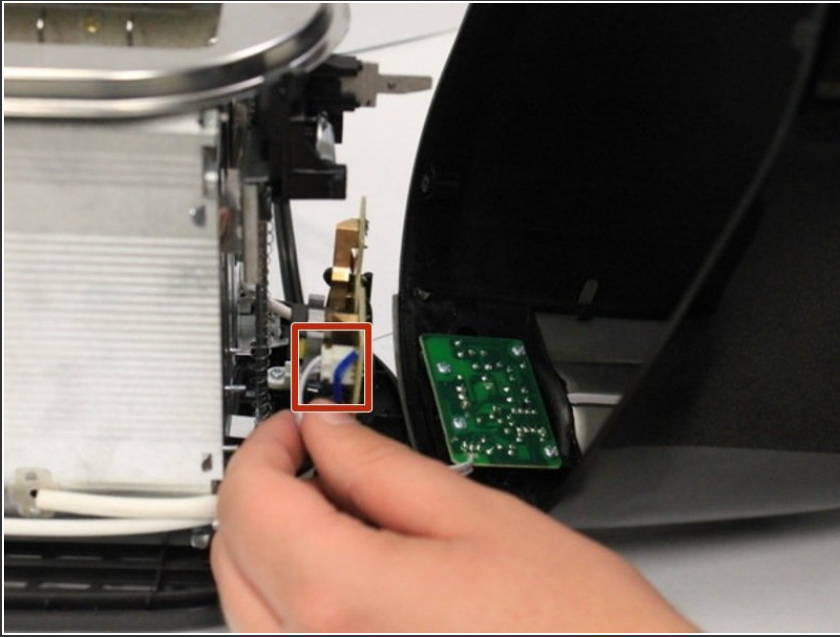
- Remove the five 6mm screws on the bottom of the toaster with a Phillips #2 screw driver.

Step 2



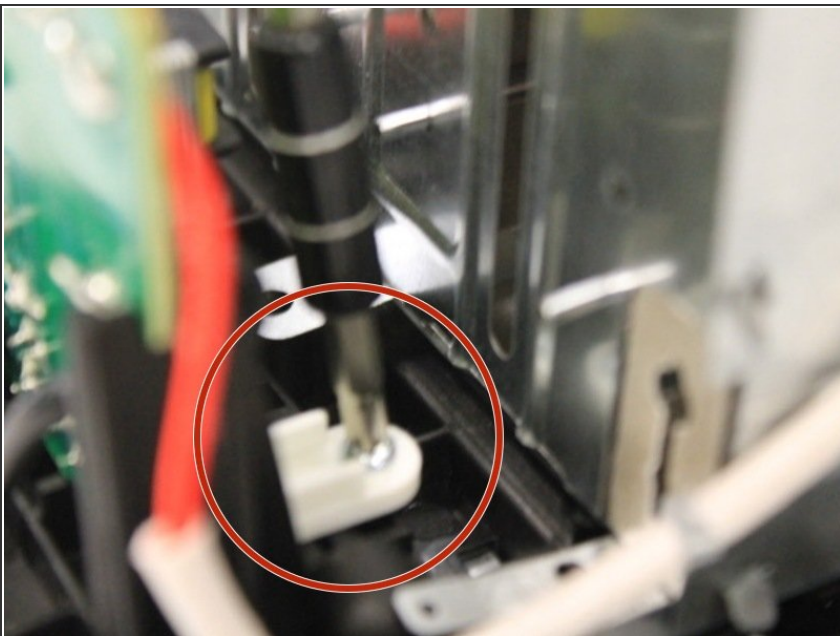
- To remove the toasting lever, pull the lever away from the toaster.

Step 3



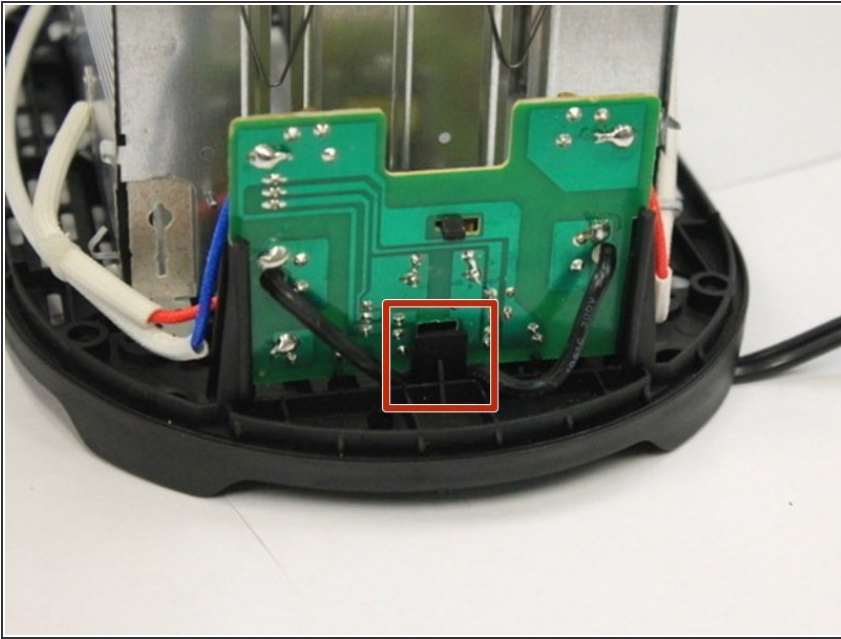
- Unplug the wire connecting the casing to the circuit board to fully remove the toaster casing.

Step 4



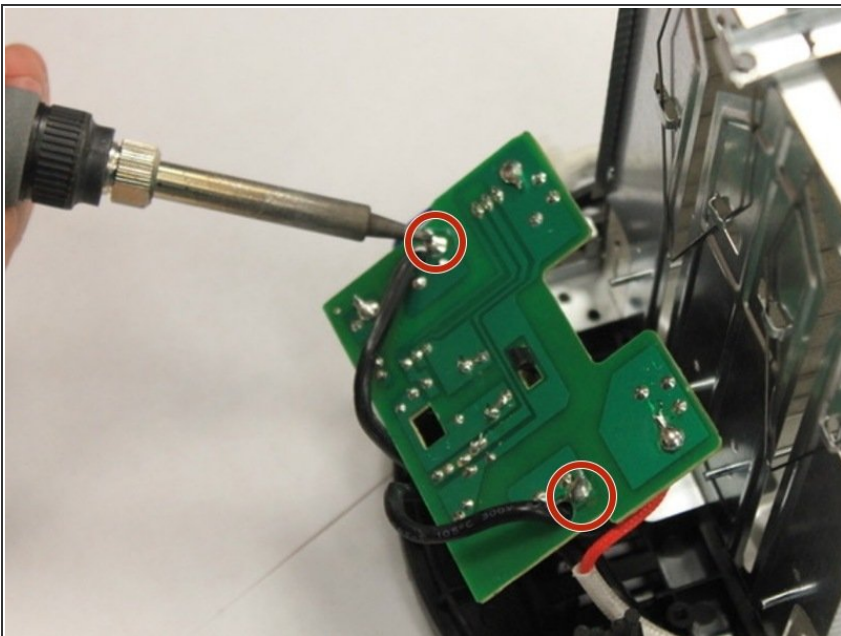
- Unscrew the wire bracket with a Phillips #2 screw driver.

Step 5



- Pull back on the black tab that is holding the circuit board in place.
- While pulling the tab back, lift up on the circuit board.

Step 6



- Desolder the power wire connections on the circuit board.
- ⚠ Desolder in a well ventilated area.
- ⚠ The tip of soldering iron is hot handle with caution.

To reassemble your device, follow these instructions in reverse order.