



Brentwood TS-292B Toasting Lever Replacement

A replacement guide for the toasting lever on the Brentwood TS-292B Broken Toasting Lever.

Written By: Elly Ayala



INTRODUCTION

This guide will show how to remove and replace the toasting lever of the Brentwood TS-292B.



TOOLS:

- [Phillips #2 Screwdriver](#) (1)
 - [Metal Spudger Set](#) (1)
 - [Tweezers](#) (1)
-

Step 1 — Toasting Lever



- Use a Phillips #2 screwdriver to remove all of the 6mm screws from the bottom of the toaster.

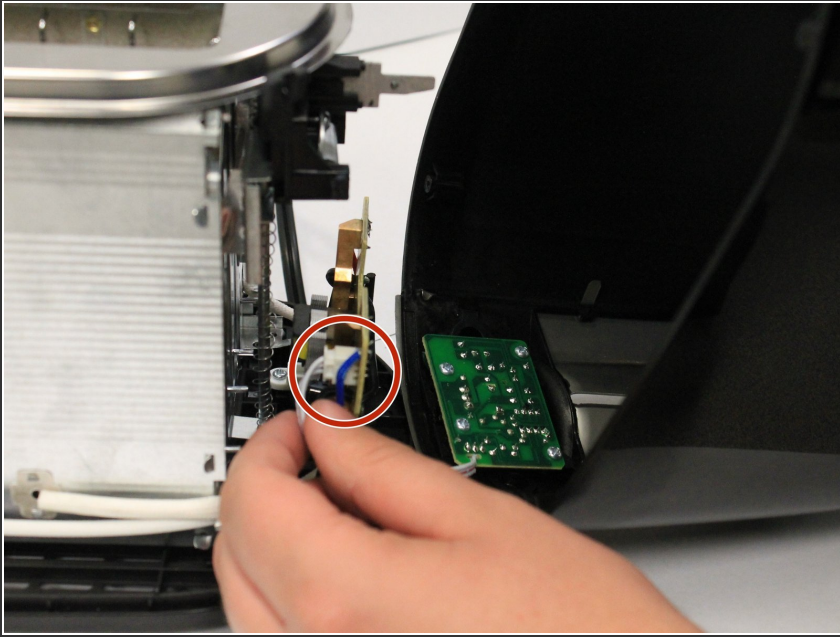
Step 2



- Push in the small tab located to the left, and pull the lever tab away from the toaster with force.

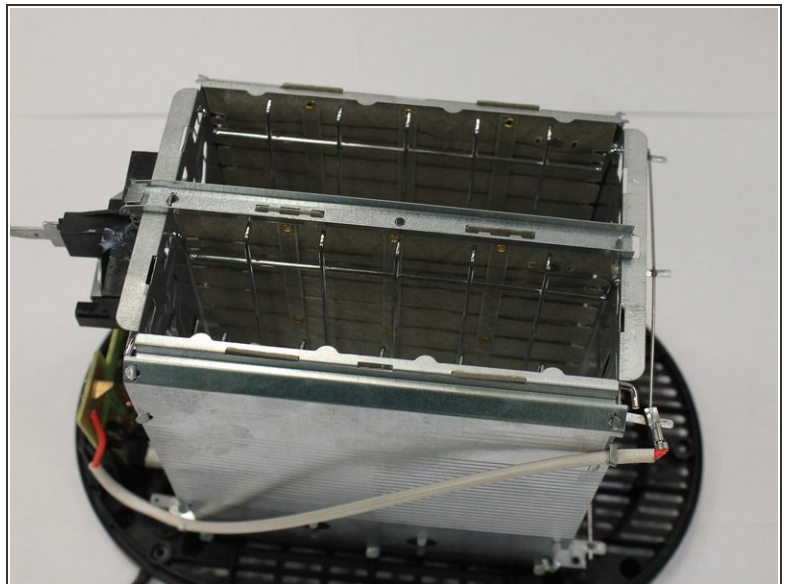
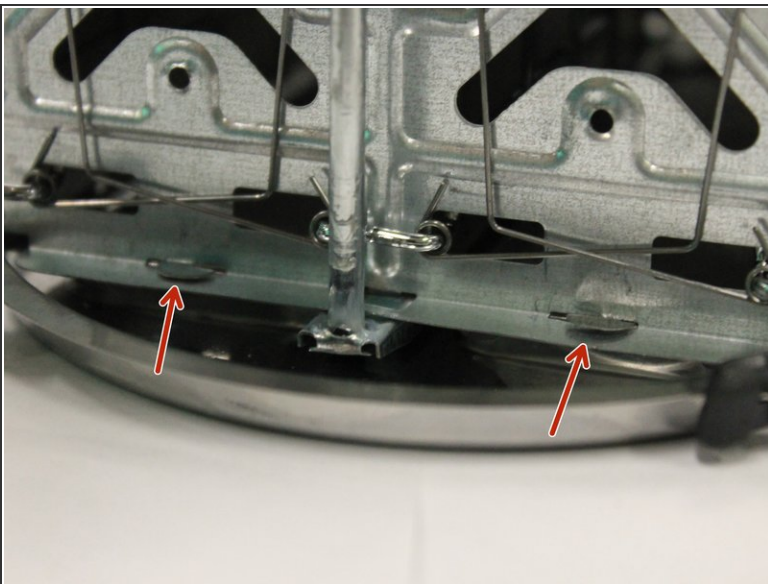
 Remove the toaster cover carefully.

Step 3



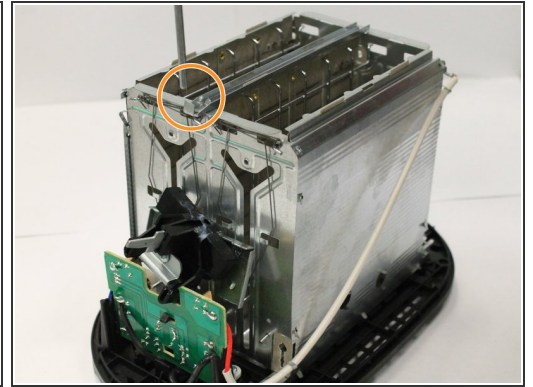
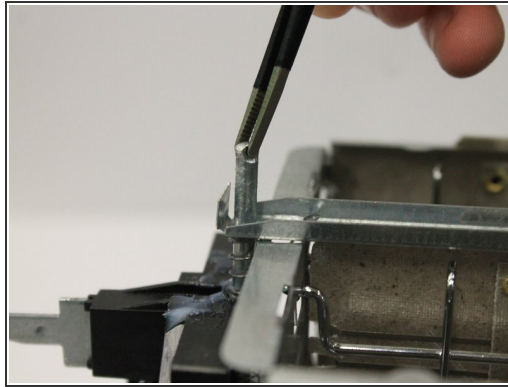
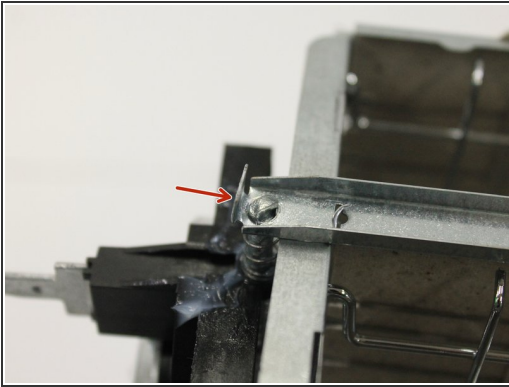
- Detach the bundled cable connector by carefully pulling it away from the circuit board.

Step 4



- Push the tabs in and lift the top of the toaster off.

Step 5



- Lift up the tab that is located at the front of the toasting lever.
- Use tweezers to carefully lift up the metal bar.
- Remove the springs and replace them with new ones.

To reassemble your device, follow these instructions in reverse order.