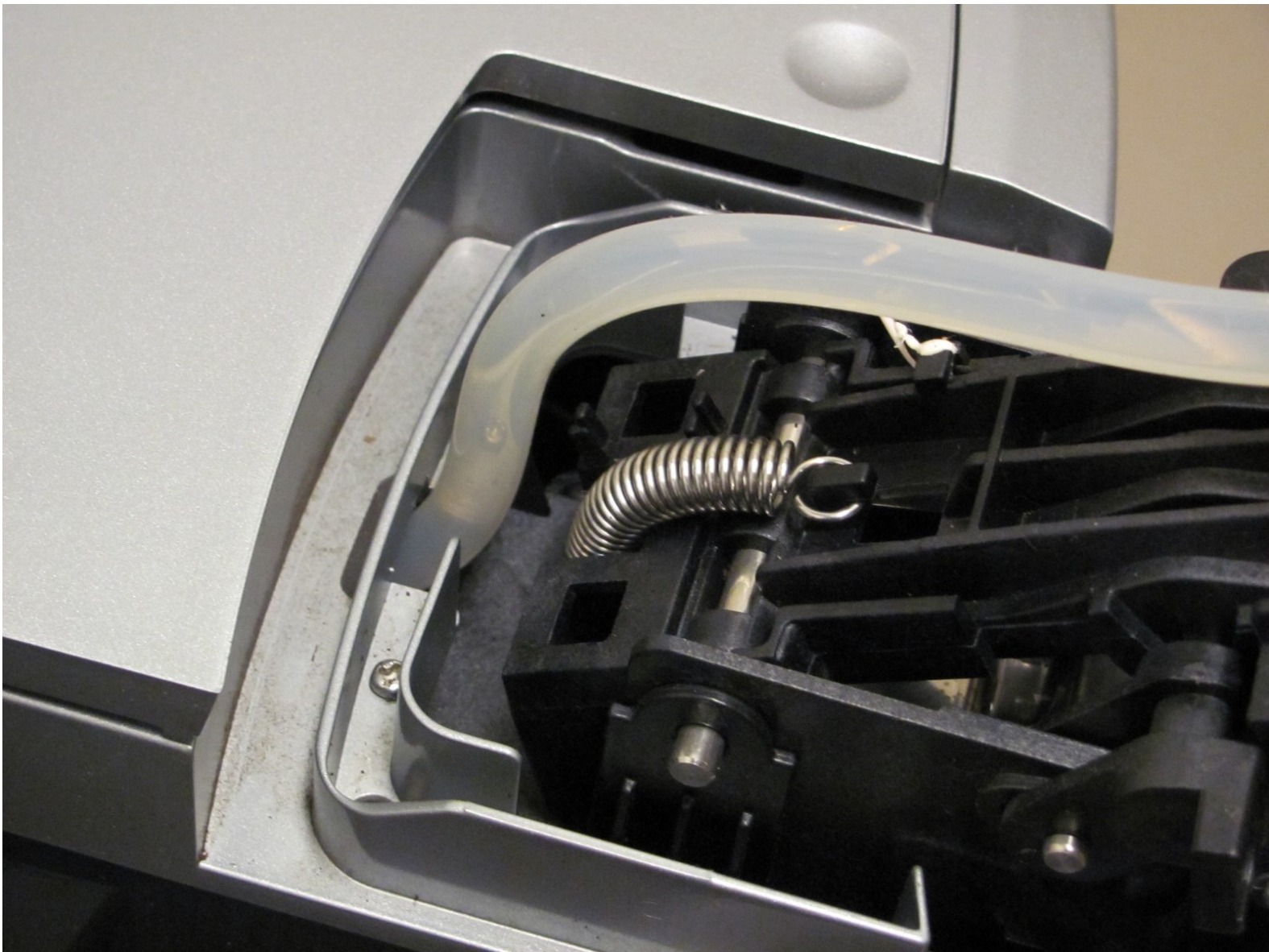




# Breville BKC600XL Spring Replacement

Replacing the spring should it fail to work.

Written By: Antonio



# INTRODUCTION

Replacing the spring should it fail to work.



## TOOLS:

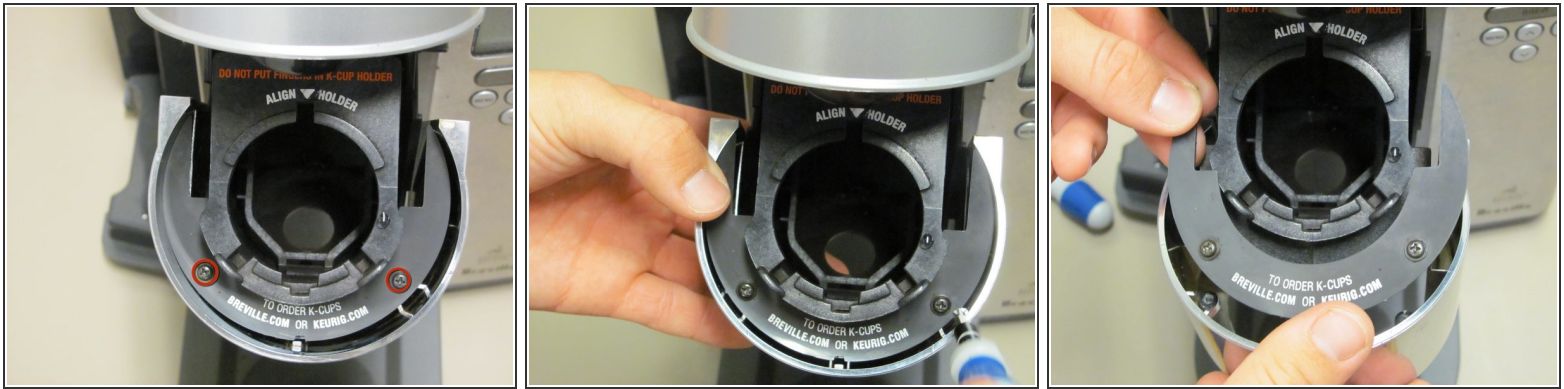
- [Phillips #0 Screwdriver](#) (1)
- [Macbook Pro and Air 5-Point Pentalobe Screwdriver](#) (1)



## PARTS:

- [Spring](#) (1)

## Step 1 — "Bottom" Black Shell Piece



- Remove the two 12mm black Phillips screws using a Phillips #0 screwdriver.

☑ Reminder for reassembly; This bottom piece is first to be screwed back on.

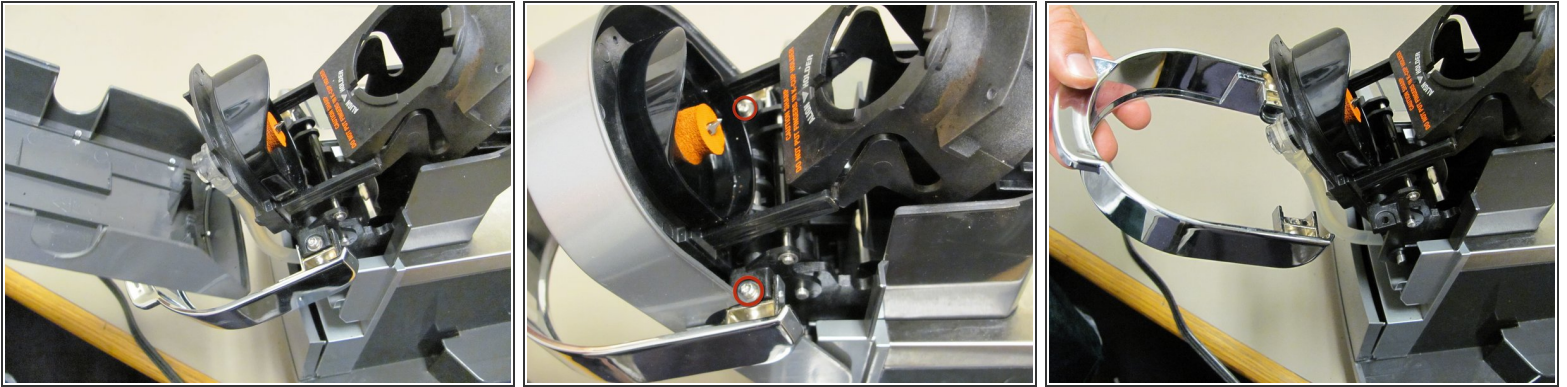
## Step 2 — "Top" Black Shell Piece



- Remove the two 12mm Phillips screws using a Phillips #0 screwdriver.

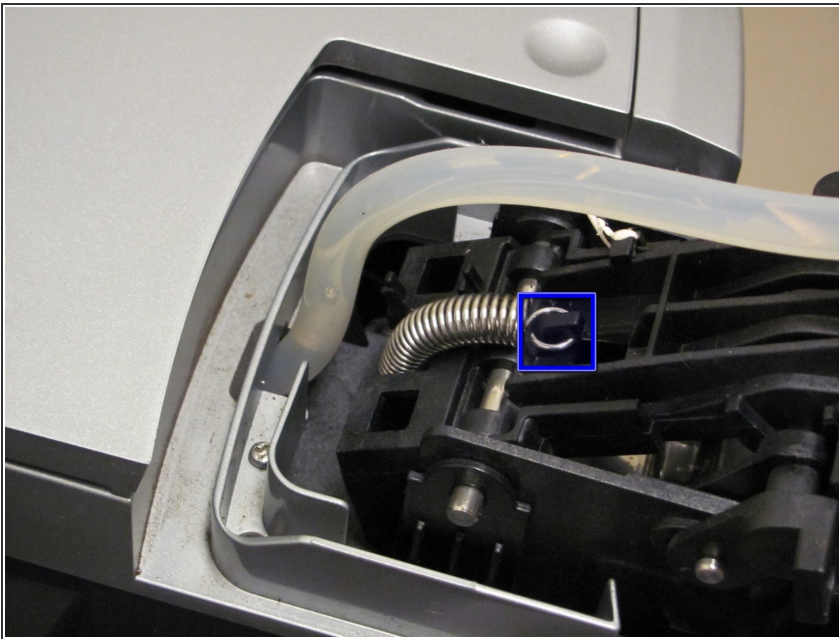


### Step 3 — Silver Casing



- Remove the grey plastic casing.
- Remove the two 12mm hexagonal screws using a 1.5mm hex screwdriver.

### Step 4 — Spring



- Identify the spring and the hook its attached to.
- Carefully remove the spring.

To reassemble your device, follow these instructions in reverse order.