



Briggs and Stratton 675 Series Repair Pull Cord Replacement

This guide shows how to replace the pull cord in a Briggs and Stratton 675 Series Engine.

Written By: Andrew Saunders



INTRODUCTION

The pull cord is used to start the lawn mower; it can often become broken or need replacement. Additionally, make sure you have a large table for the replacement and a rag nearby for wiping off any grease and oil. You will need a standard ratcheting socket wrench with a 3/8" and 5/16" driver as well as a Phillips #2 screwdriver.



TOOLS:

- [Phillips #2 Screwdriver](#) (1)
- [3/8" Socket](#) (1)
- [Socket Wrench](#) (1)
- [5/16" Socket](#) (1)

Step 1 — Pull Cord



⚠ Make sure the the engine is off and the spark plug wire is removed and away from the spark plug before begining.

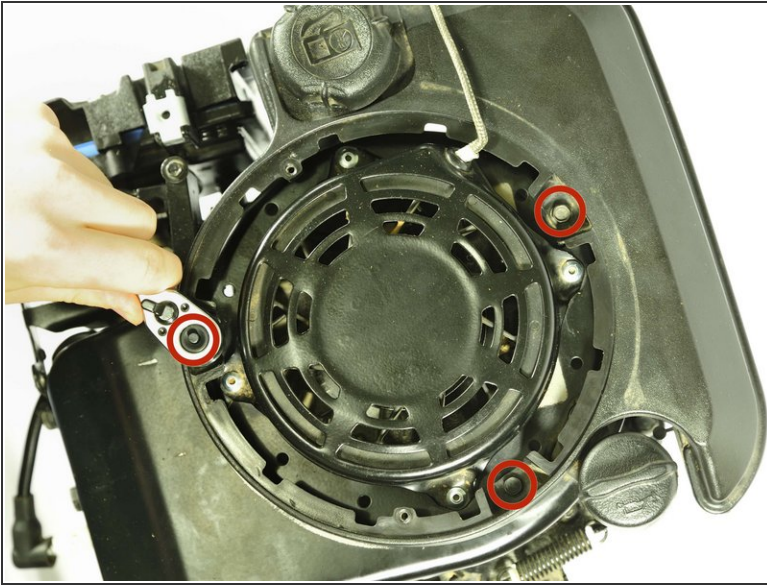
- Use a Phillips #2 screwdriver to remove the two 25mm screws on top of the engine cover.

Step 2



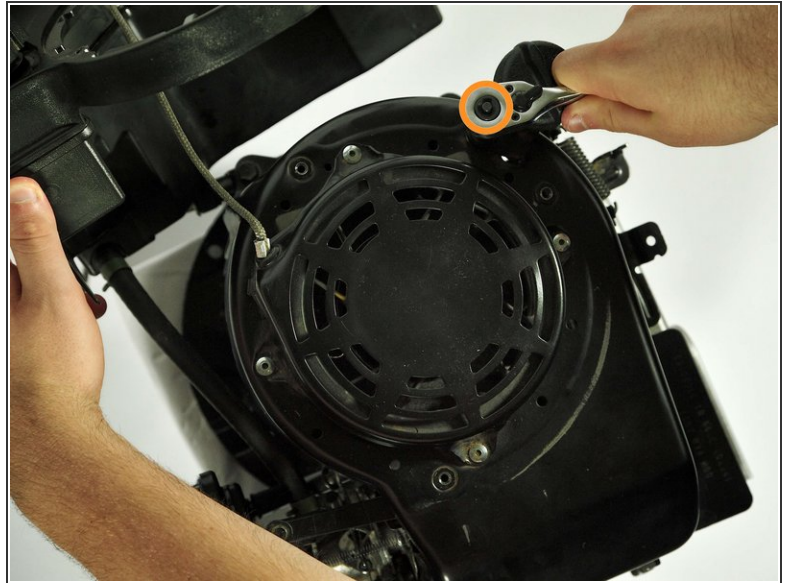
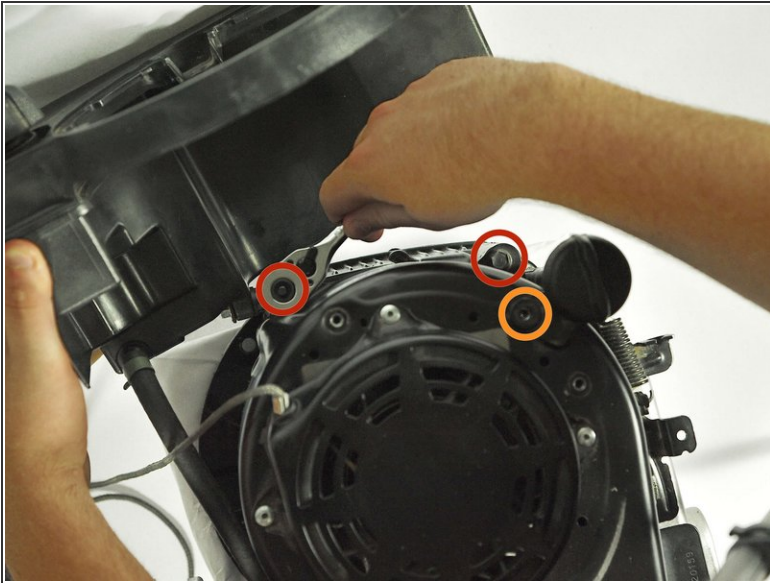
- Use your hands to lift the engine cover off, separating it from the rest of the engine.
- Slip the pull cord through the engine top cover after separating it.

Step 3



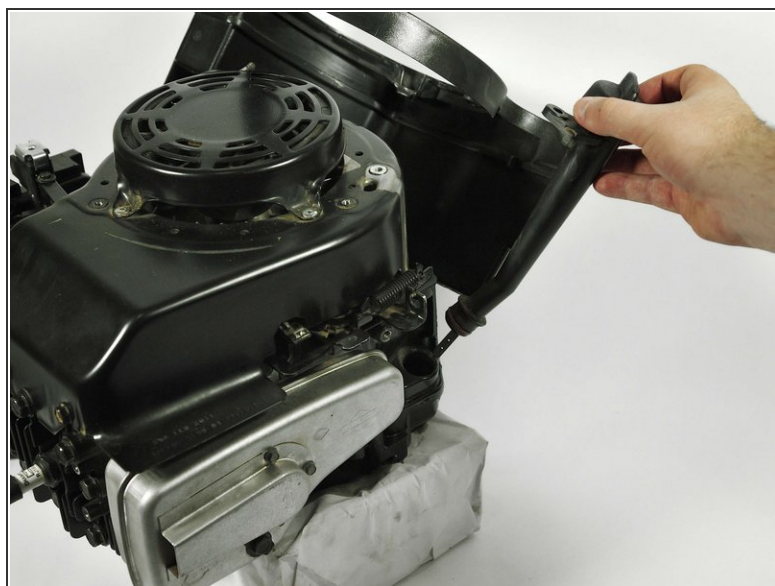
- Use a socket wrench with a 5/16" socket to remove the three 17mm screws that keep the fuel tank attached.
- Tilt the fuel tank back at least 45 degrees to get it out of your way.

Step 4



- Use a socket wrench with a 3/8" socket to remove the two 26mm screws at the back of the engine shield.
- Use a socket wrench with a 5/16" socket to remove the 17mm screw on the top of the engine shield.

Step 5



- Remove the oil funnel from the rest of the engine. It should pull away easily and come off completely.

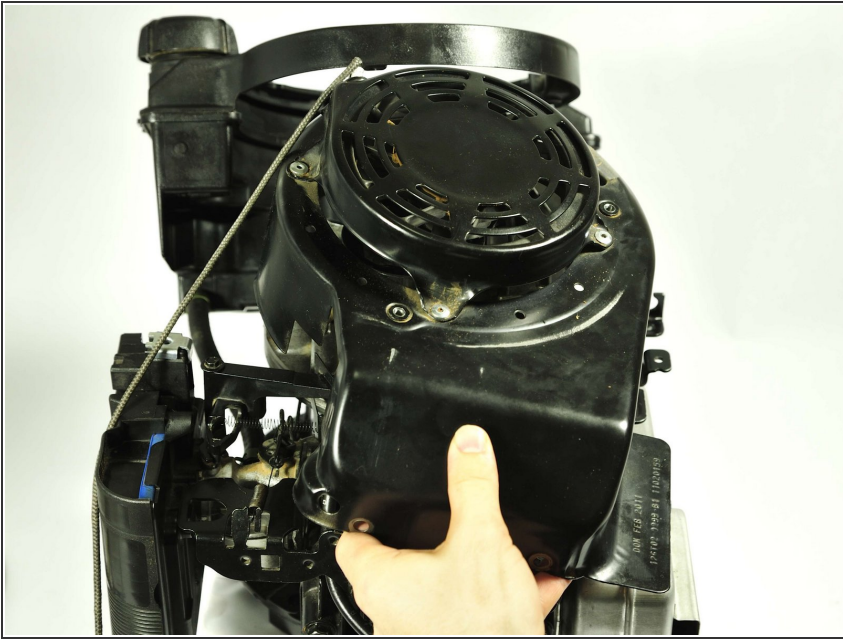
⚠ Make sure there isn't an overflow of oil in the funnel or hose before removing it to avoid spilling.

Step 6



- Use a socket wrench with a 3/8" socket to remove the two 20mm screws on the front of the engine shield.

Step 7



- Remove the engine shield and flip it over.

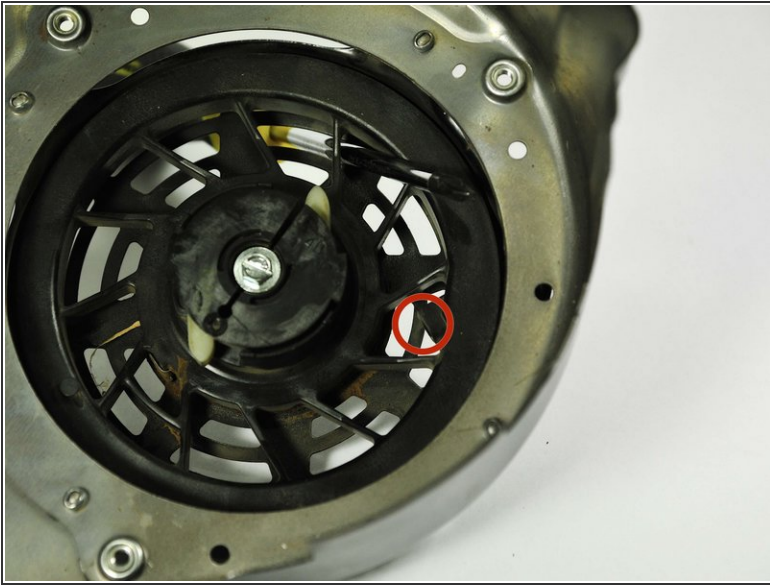
Step 8



i If you are missing a pull cord, skip straight to step 9.

- Pull the cord back until it is completely unwound from the starter mechanism spool.
- Wedge a screwdriver into the gap to hold the spool in place.
- Cut the end of the pull cord with scissors or a knife.

Step 9



- Line up the hole on the outside of the engine shield with the hole on the inside, then slip the new pull cord through and tie a knot.

To reassemble your device, follow these instructions in reverse order.