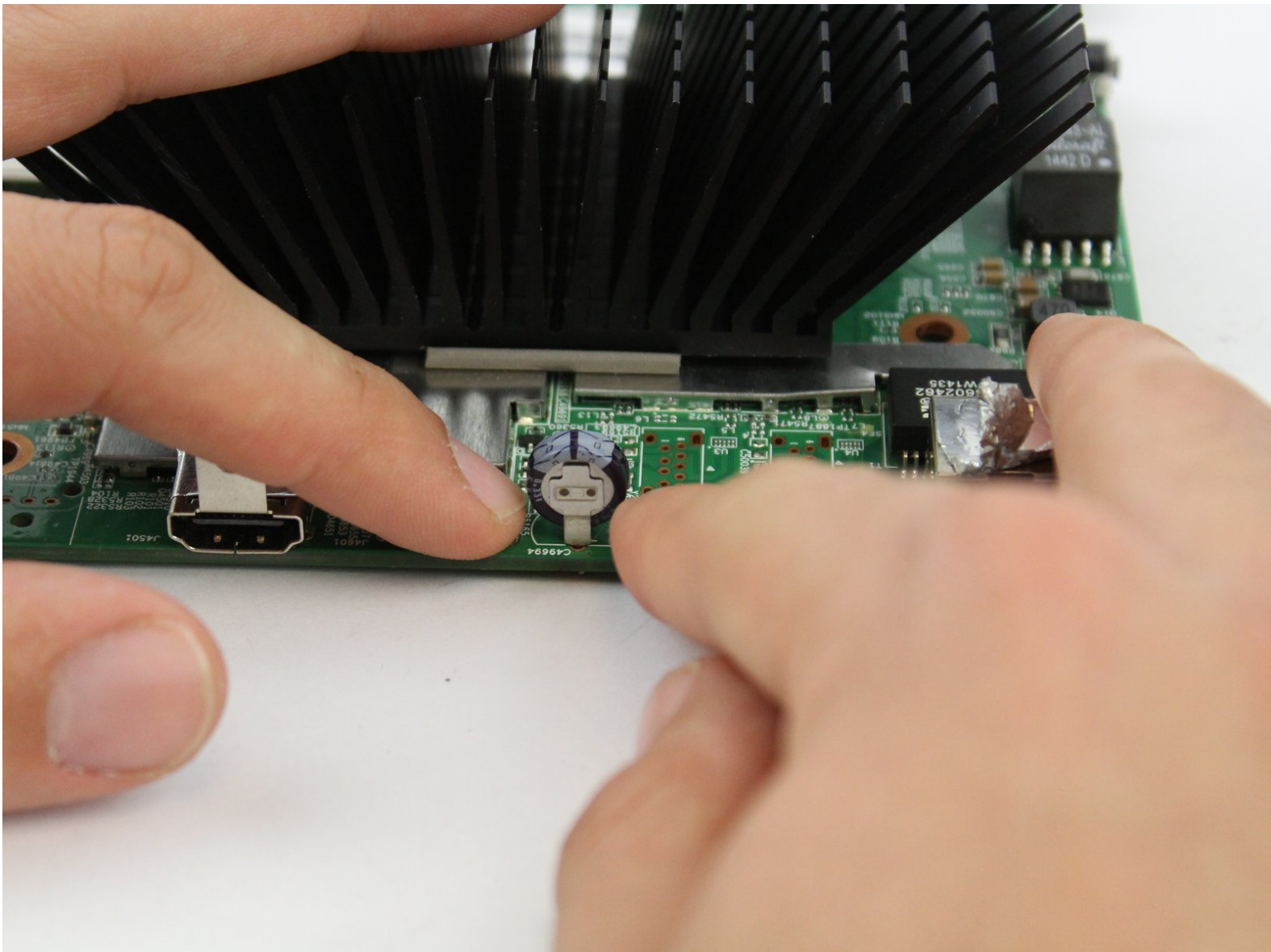




Brightsign 4k Battery Replacement

Brightsign 4k's battery stops working. The device does not turn on.

Written By: Tuong Ngo



INTRODUCTION

The battery is essential and can wear out or stop working over time. This guide will show you how to properly remove it.

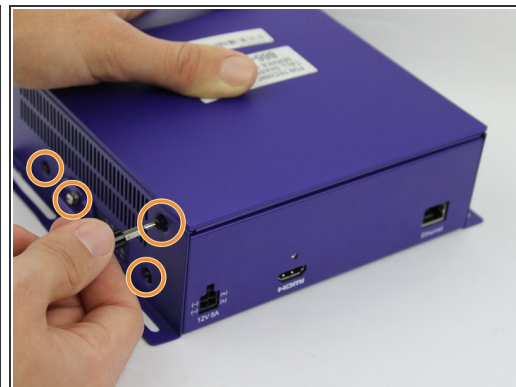
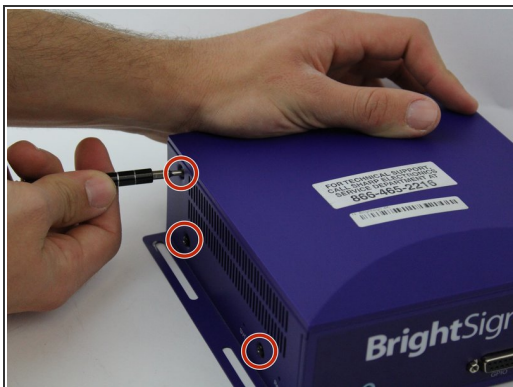
Tech Tip: this Replacement guide will require the use of a soldering iron to remove solders, so check out the [soldering guide](#) if you're unfamiliar with the process.



TOOLS:

- [JIS #0 Screwdriver](#) (1)
 - [54 Bit Driver Kit](#) (1)
 - [Soldering Iron](#) (1)
 - [Desoldering Pump](#) (1)
-

Step 1 — Outer Shell



- Remove three 8mm screws from the left side of the device.
- Remove four 8mm screws from the right side of the device.

Step 2



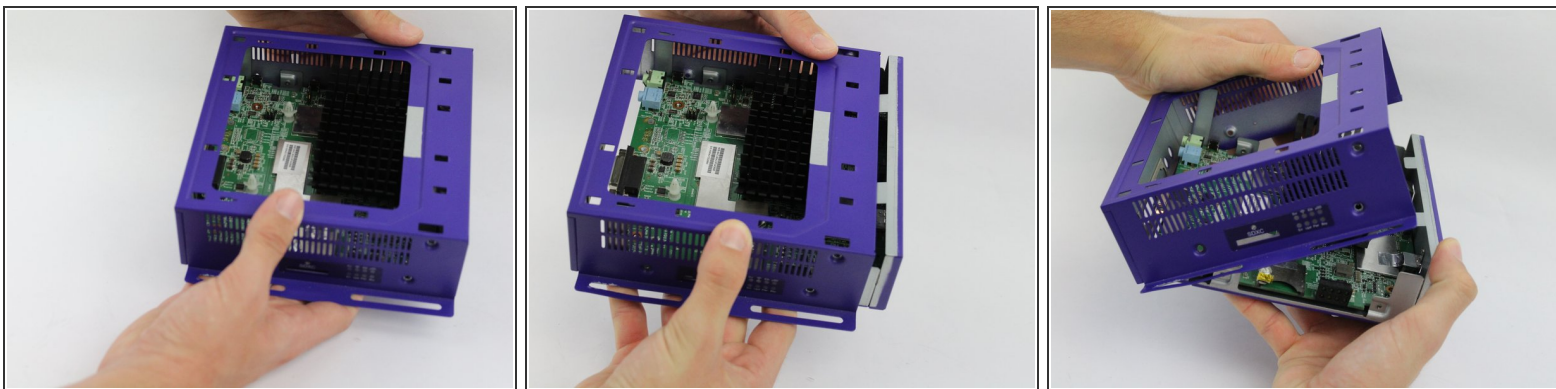
- Apply pressure on the SD card to pop it out of the port.
- Remove the card by pulling it out.

Step 3



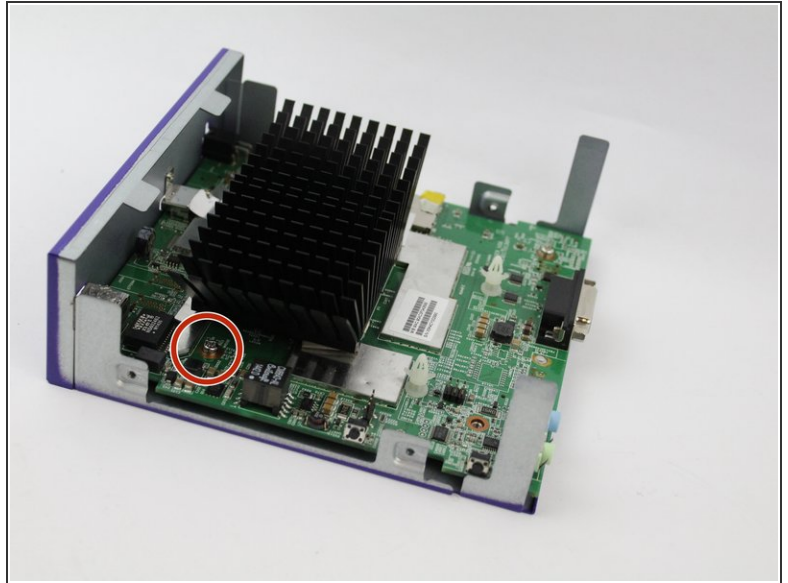
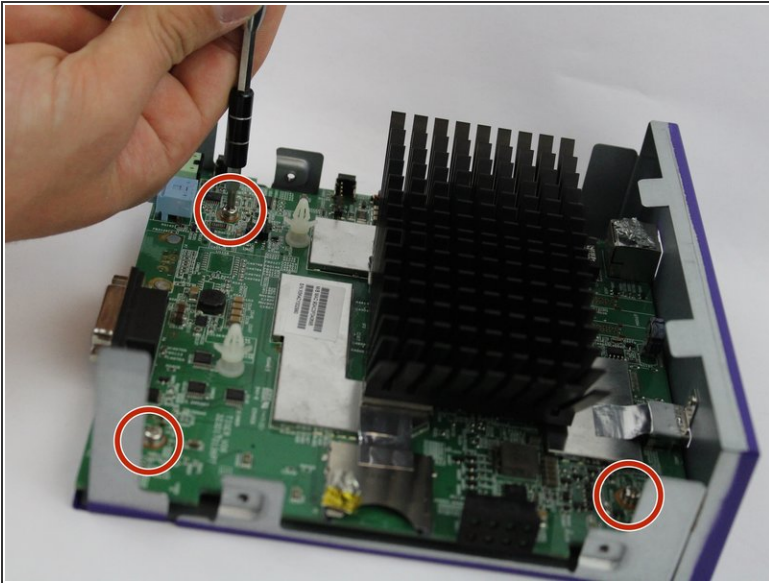
- Press down on the top cover of the device and slid it towards you until you see a slight gap created.
- Lift the top cover off.

Step 4



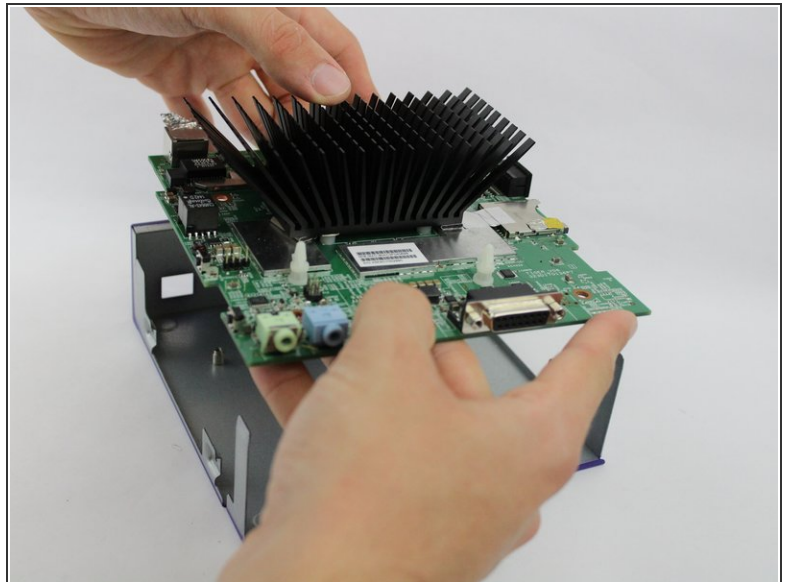
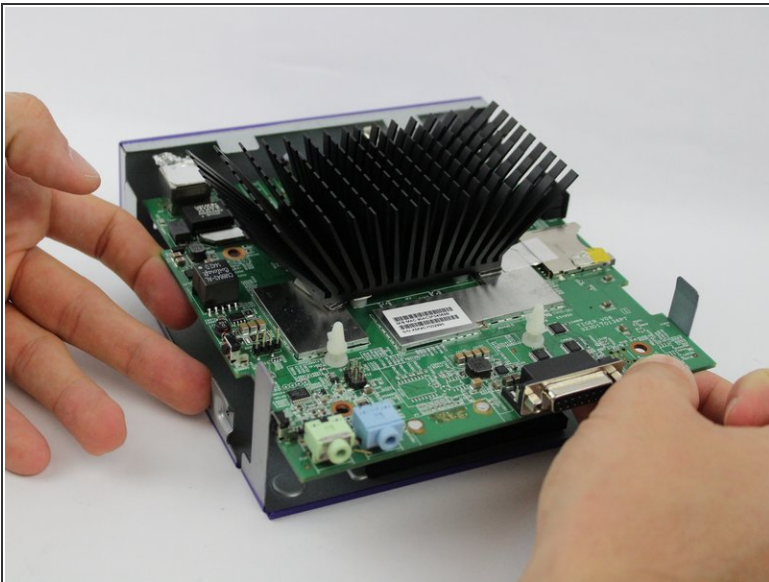
- Slide the body case back away from the bottom.
- Pull up the body case to remove it from the bottom.

Step 5 — Motherboard Removal



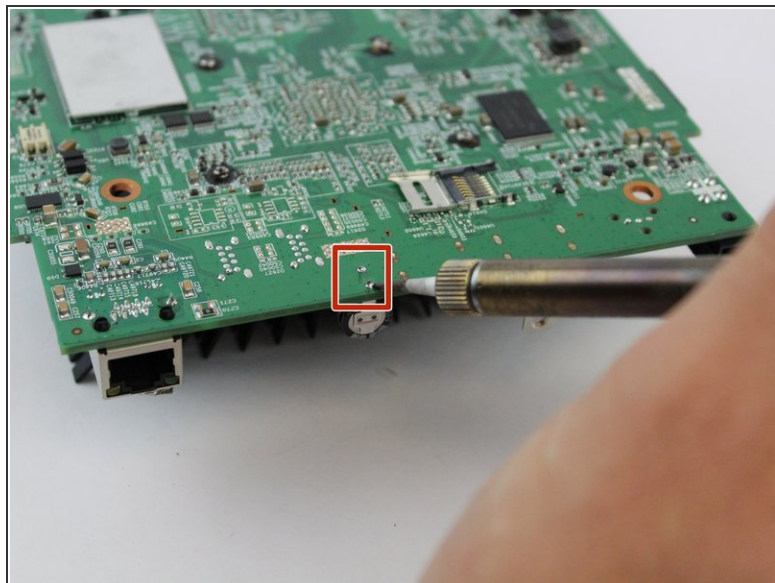
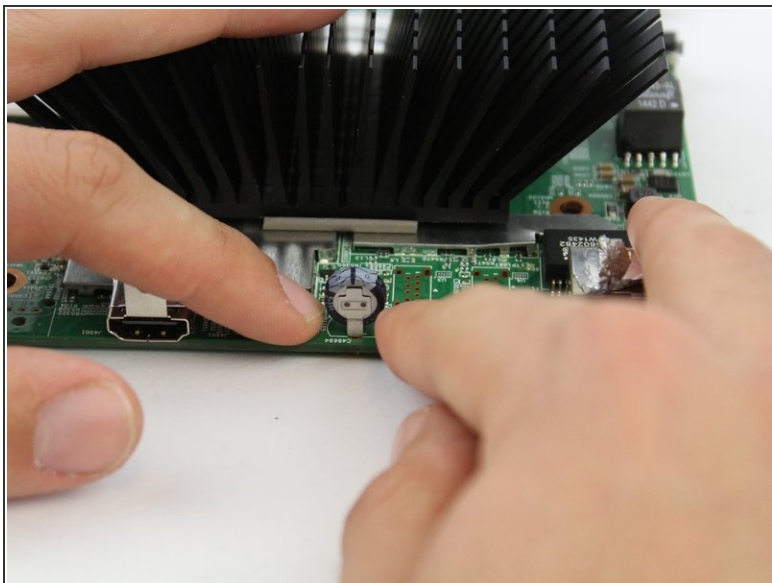
- Remove the four 8mm screws at each corner of the motherboard with a JIS #0 screwdriver.

Step 6



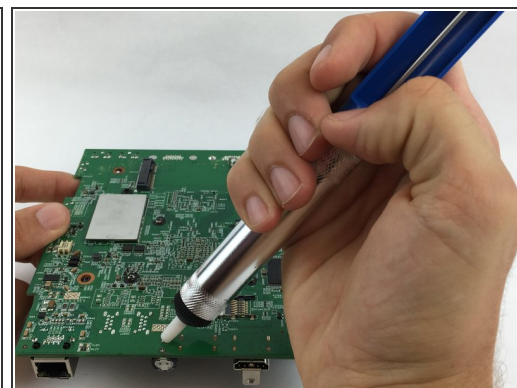
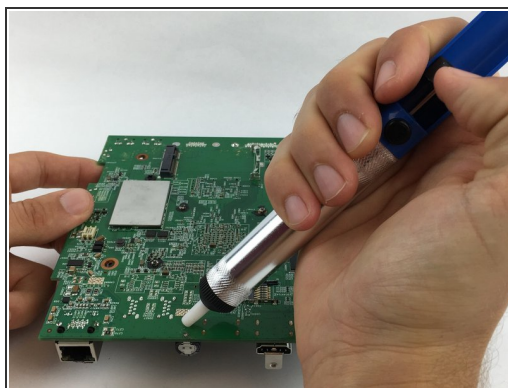
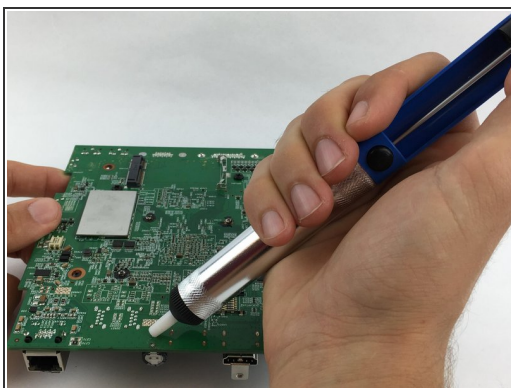
- Lift the motherboard out of the casing.

Step 7 — Battery



- Flip the motherboard over.
 - Desolder the two solder joints and remove the melted solder.
- ⚠ Beware of over heating the soldering kit will damage the logic board.

Step 8



- Apply the desoldering pump to remove the melted part from the motherboard (press the button to release it).
- Pull the battery from the motherboard.

To reassemble your device, follow these instructions in reverse order.