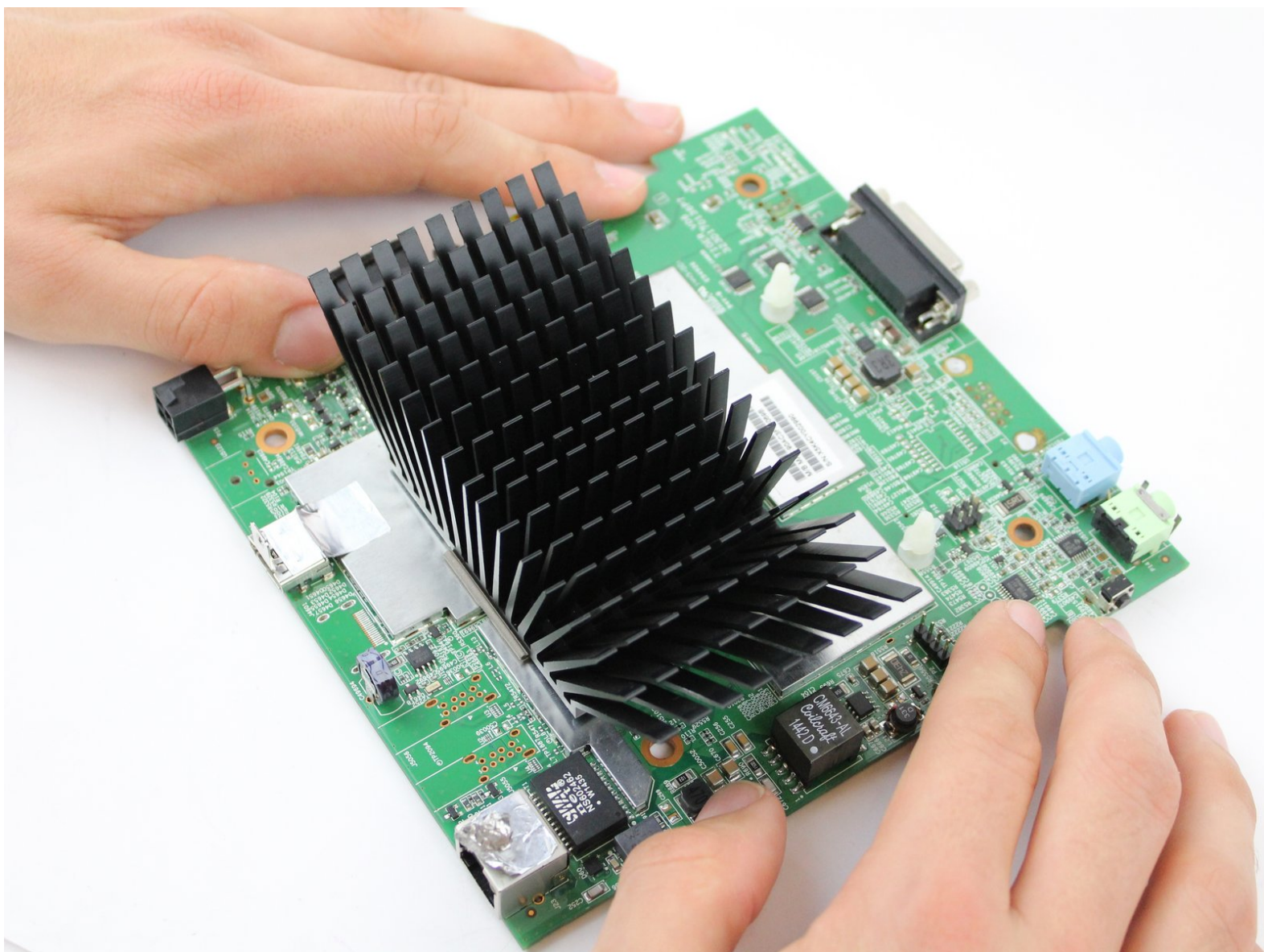




Brightsign 4k Motherboard Removal

BrightSign 4k motherboard removal

Written By: Zackery



INTRODUCTION

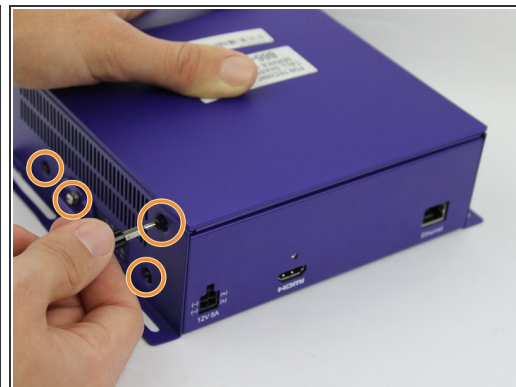
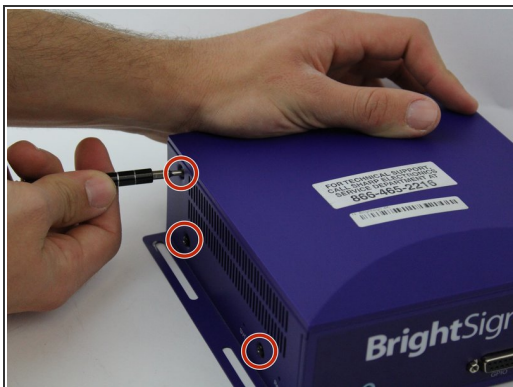
This guide will take you through the process of properly removing the motherboard of the device. Removal of the motherboard is necessary to access additional components that may need fixing.



TOOLS:

- [JIS #0 Screwdriver](#) (1)
 - [54 Bit Driver Kit](#) (1)
-

Step 1 — Outer Shell



- Remove three 8mm screws from the left side of the device.
- Remove four 8mm screws from the right side of the device.

Step 2



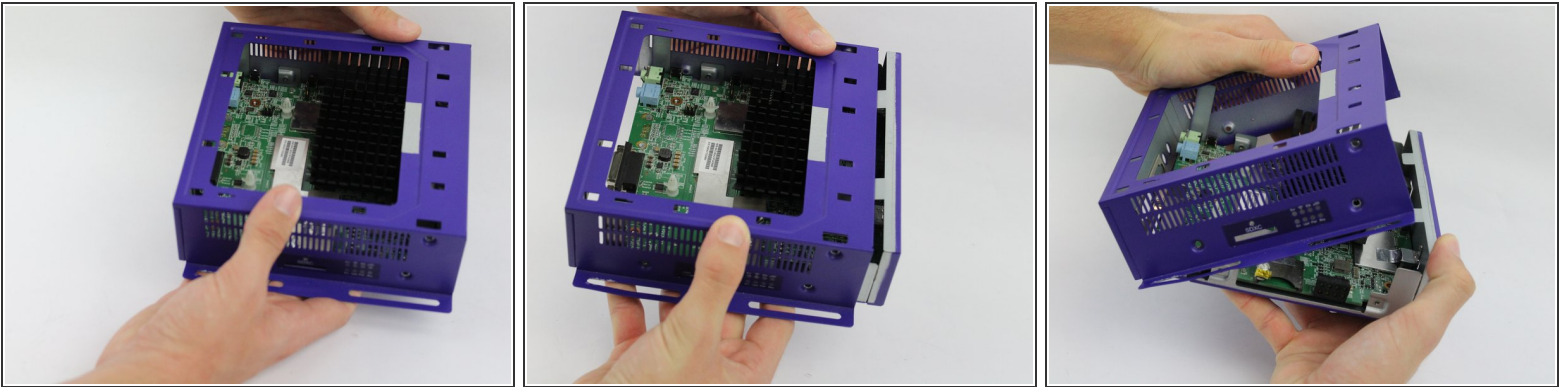
- Apply pressure on the SD card to pop it out of the port.
- Remove the card by pulling it out.

Step 3



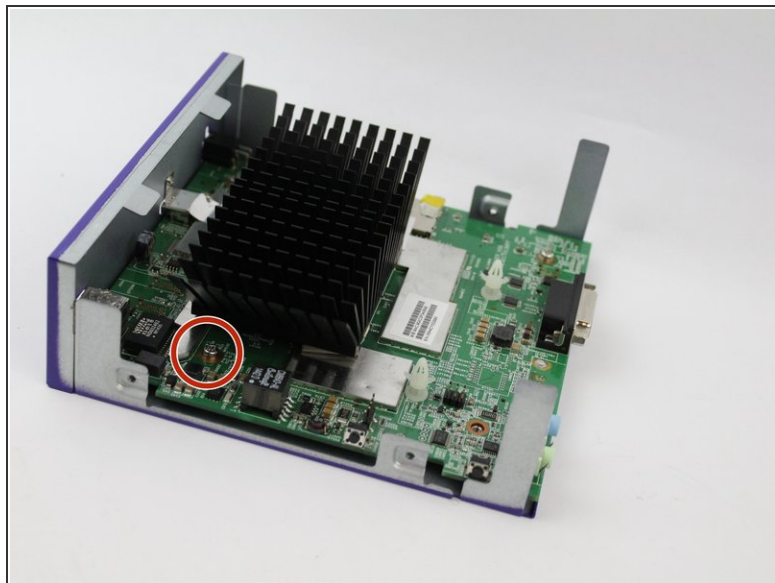
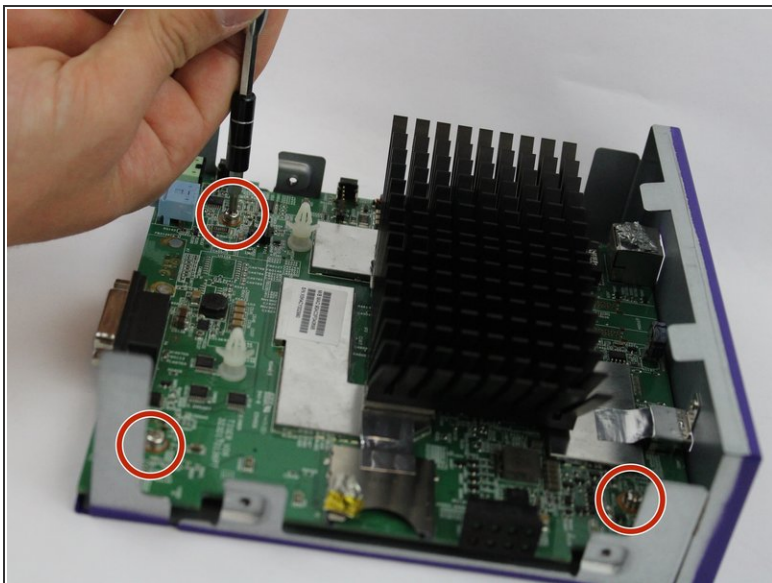
- Press down on the top cover of the device and slid it towards you until you see a slight gap created.
- Lift the top cover off.

Step 4



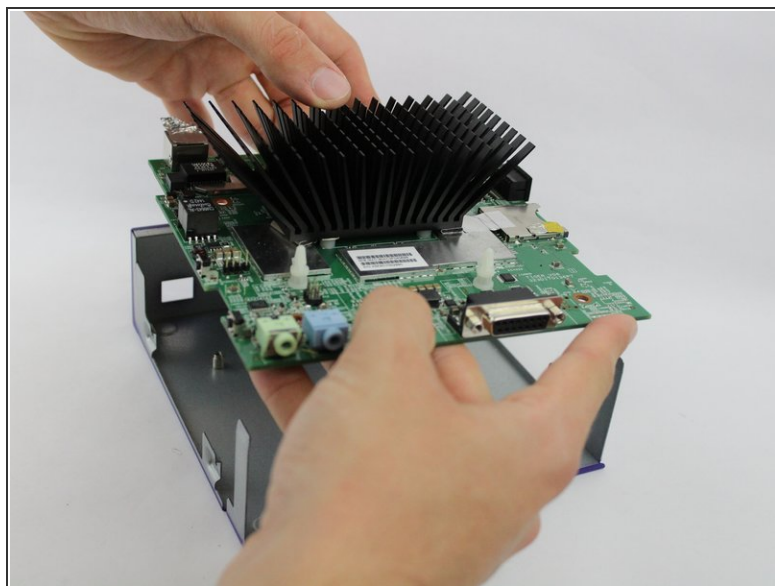
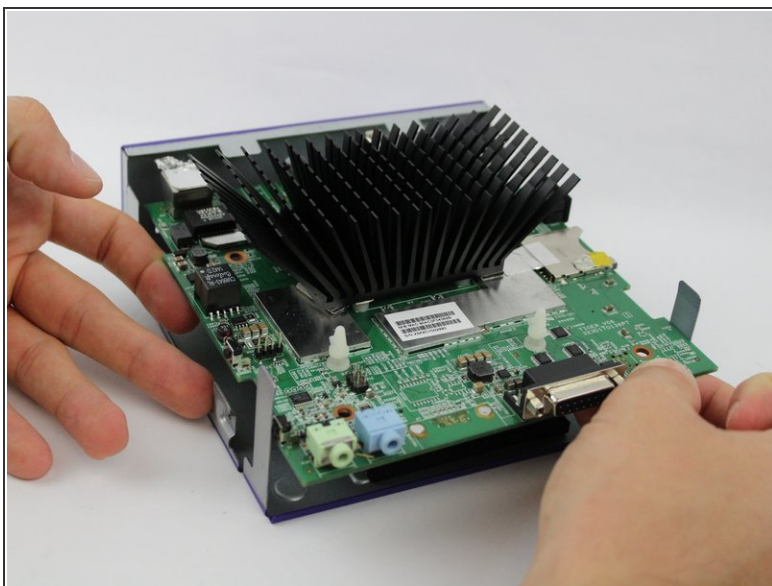
- Slide the body case back away from the bottom.
- Pull up the body case to remove it from the bottom.

Step 5 — Motherboard Removal



- Remove the four 8mm screws at each corner of the motherboard with a JIS #0 screwdriver.

Step 6



- Lift the motherboard out of the casing.

To reassemble your device, follow these instructions in reverse order.