



Brother MFC-490CW Print head Replacement

Use this guide to remove a malfunctioning print head.

Written By: Henry Cho



INTRODUCTION

The print head may need replacing if failed attempts at cleaning the print head still produces faded or spotted prints or documents.



TOOLS:

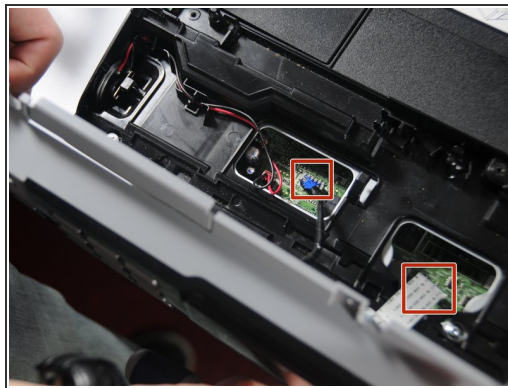
- [Phillips #2 Screwdriver](#) (1)
 - [Spudger](#) (1)
-

Step 1 — Remove screws holding the front panel



- Unscrew these three 12.1mm screws holding the control panel in place.


Step 2 — Unplug the panel from the rest of the printer



- Lift up the front panel from the device.
- Gently lift up and pull out the data cables that attach the panel to the printer.


Step 3 — Separate the arm holding scanner unit



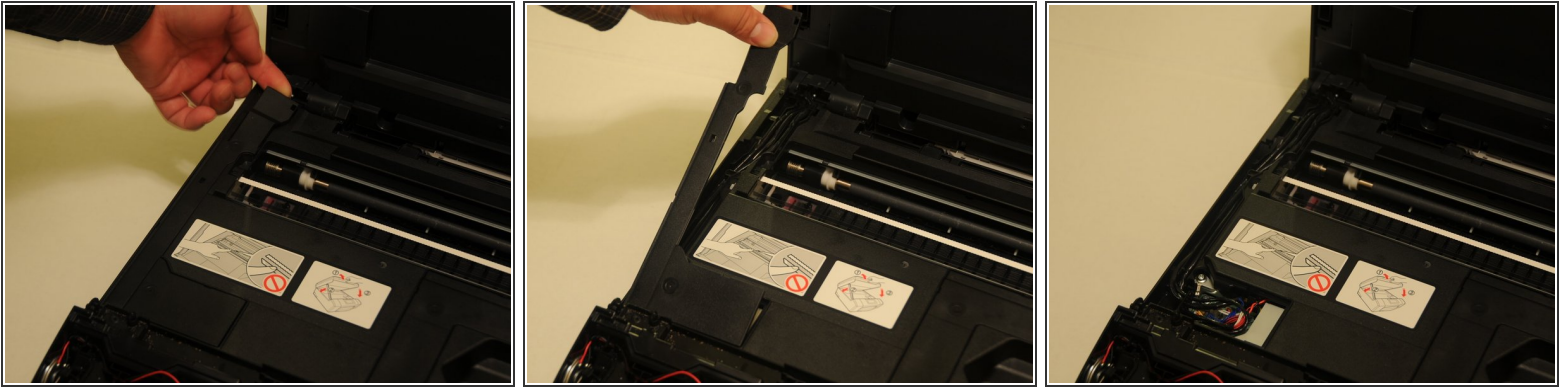
-  Before removing the unit, apply 2 or 3 pieces of tape to secure the top and bottom of the unit.
- Lift the scanner unit.
 - Gently twist the top portion of the arm. The top portion should release from the scanner unit.
 - Rotate the arm approximately 45 degrees to remove the bottom portion of the arm from the device.

Step 4 — Remove the scanner unit from the device



- Slide the unit either to the left or right and begin to push the unit away from the device.
 - Once one hinge is separated from the device, begin to remove the other hinge from device.
 - Gently place the unit on the work surface.
-  Be careful not to pull too hard. The wires connecting the unit from the device must be removed.

Step 5 — Remove left wire panels



i While it is not necessary to use a prying tool, using one may make it easier to lift the panels.

- Starting from the back of the printer, use the exposed portion of the panel to gently pry the panel up from the printer.

Step 6 — Remove right wire panel



- From the back of the device, use the exposed portion of the panel to begin to lift the panel away from the device.

Step 7 — Removing left set of power cables



i Before removing the cables, create a diagram of the locations of the different cables. Then, label the cables with some tape or Post-Its.

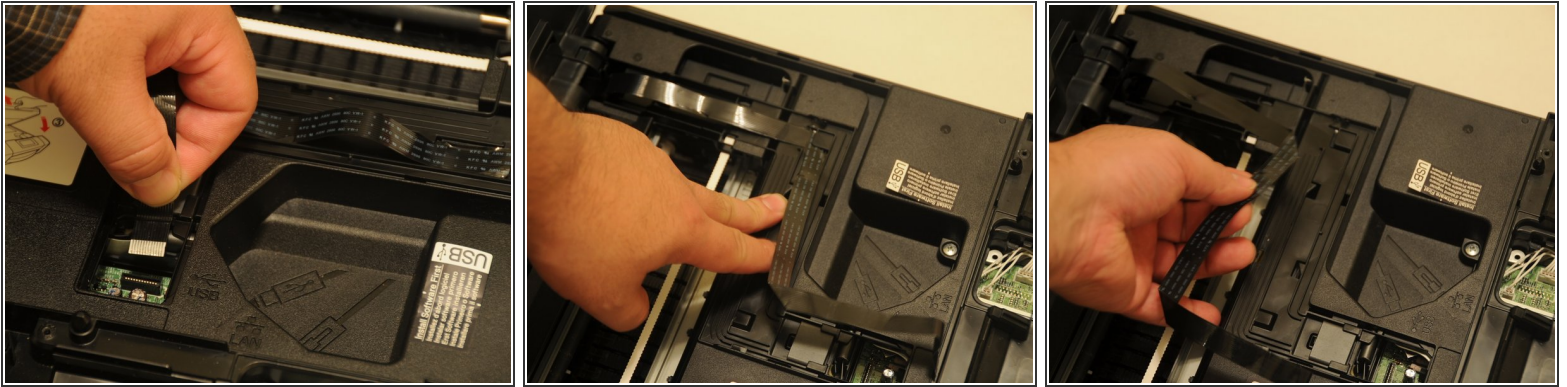
- Remove the three power cables that connect the scanner to the motherboard.

Step 8 — Remove the ground wire



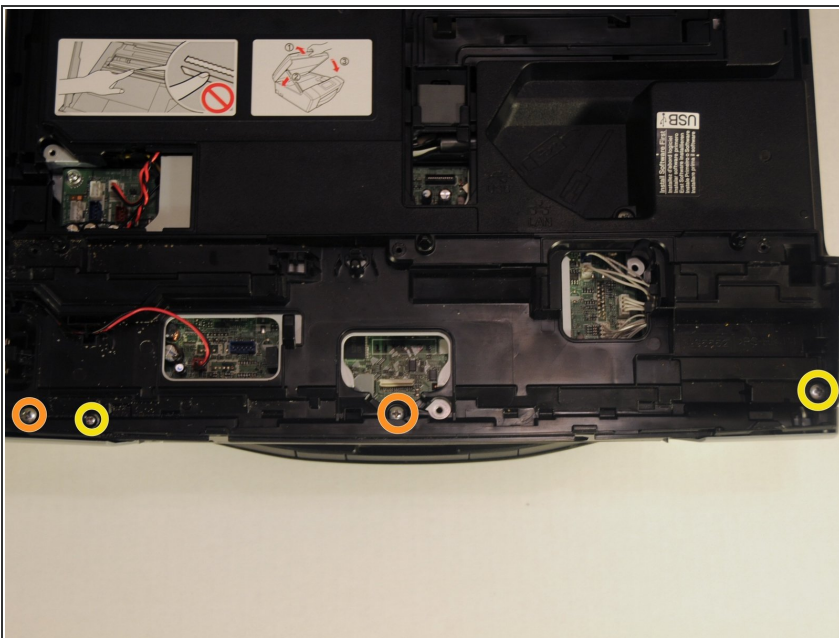
- Unscrew the 12.1mm screw to remove the ground wire.

Step 9 — Remove data cable



- Gently pull the data cable away from the motherboard.
- Slide the cable out of the slots to remove the cable from the device.
- The scanner unit is now separated. Place the unit and ground screw in a safe part of the workspace until needed for re-assembly.

Step 10 — Remove front screws of the device cover



- Unscrew the three 14.1mm screws.
- Unscrew the 12.1mm screw.

Step 11 — Remove the paper tray



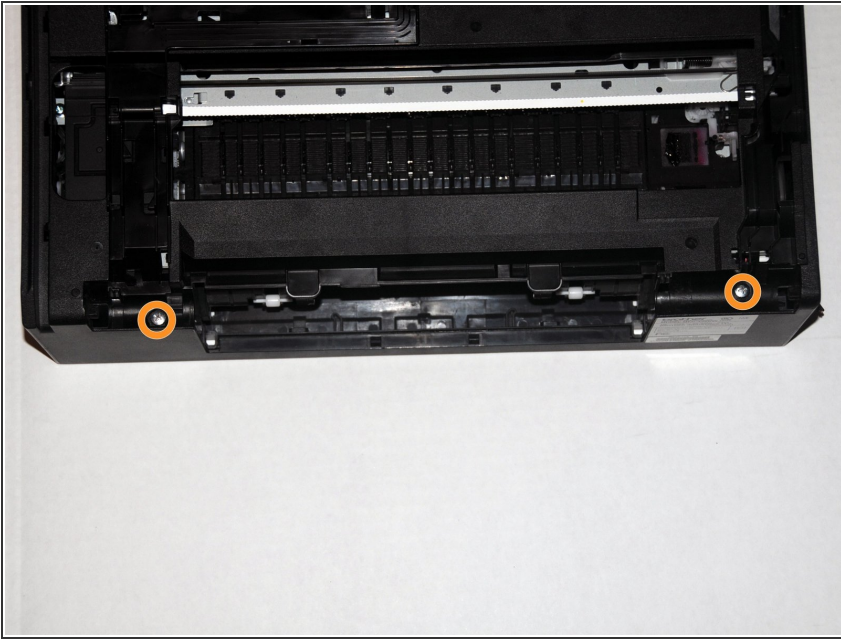
- Pull the paper tray away from the device.

Step 12 — Remove center screw near the USB and ethernet ports



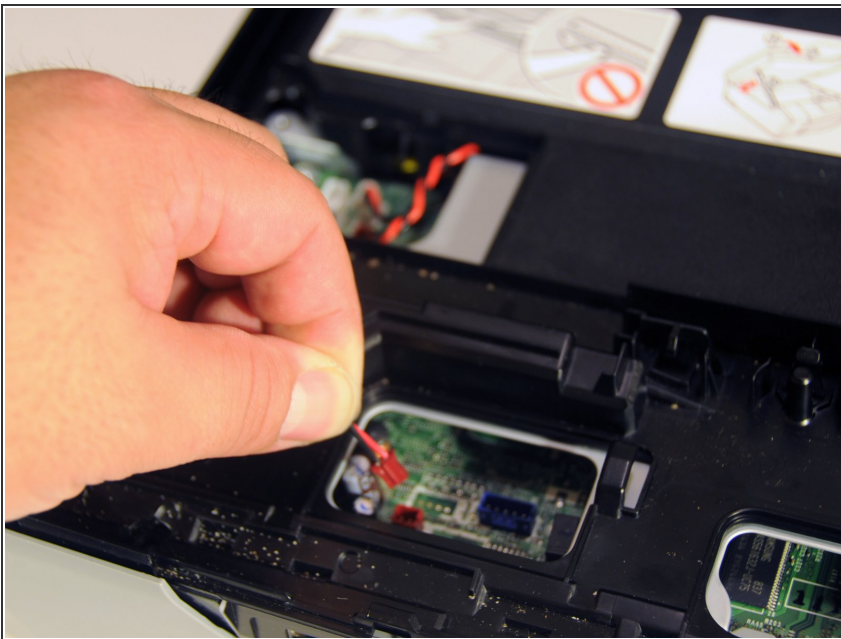
- Unscrew the 8mm screw at the center of the device.

Step 13 — Remove rear panel screws



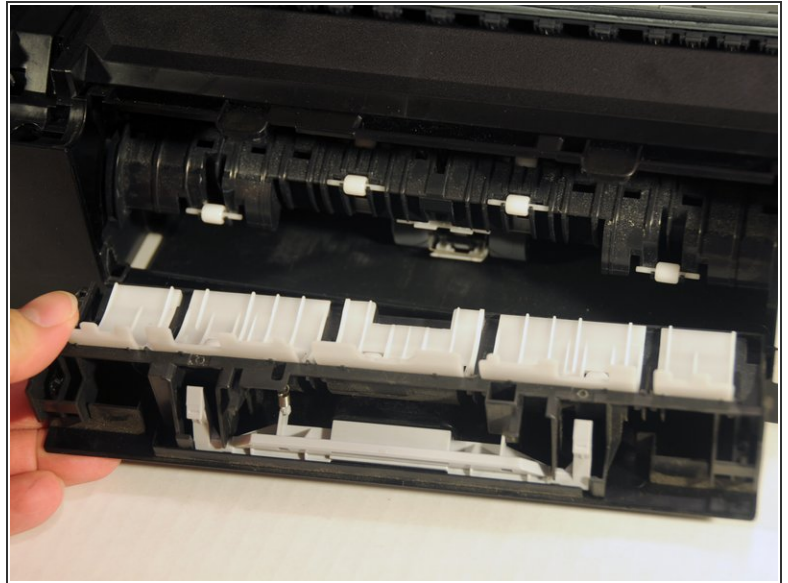
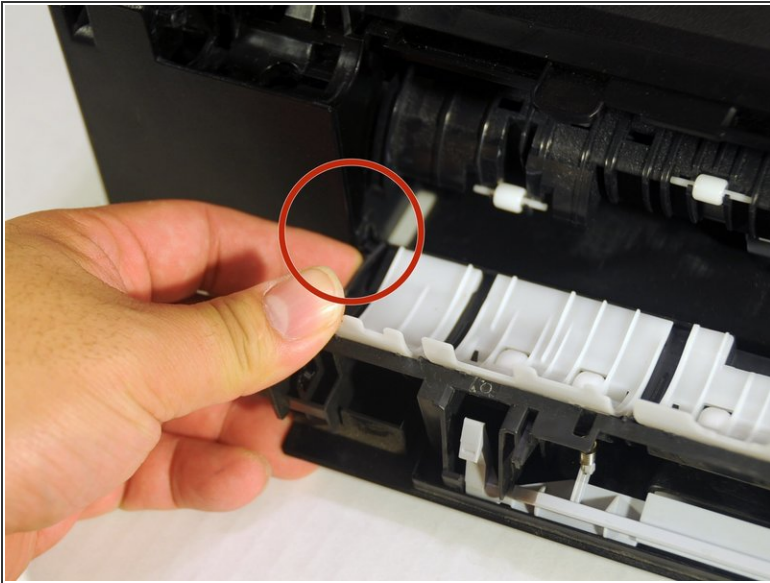
- Unscrew the two 14.1mm screws holding the panel in place.

Step 14 — Remove red power cable



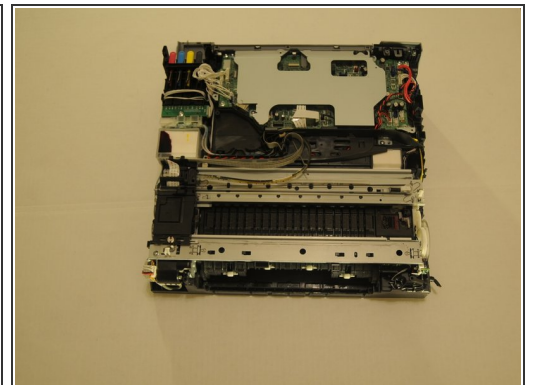
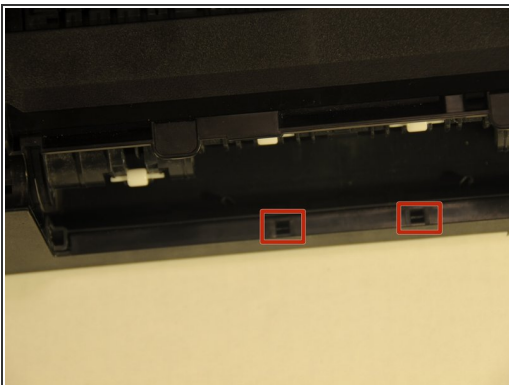
- ⓘ This cable needs to be removed to allow the removal of the device cover.
- Gently remove the red power cable from the motherboard.

Step 15 — Remove paper jam clear cover



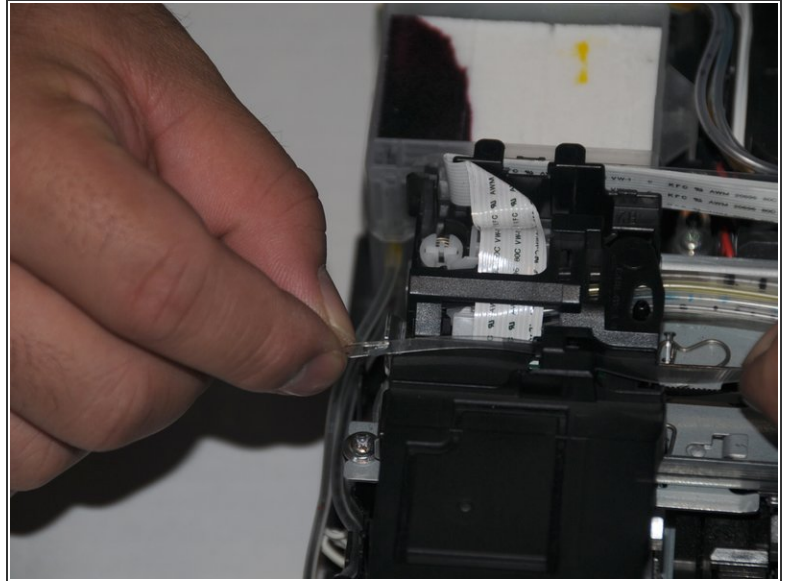
- Gently push the upper-left tab of the cover and separate the hinged portion of the cover from the rest of the device.
- Once one side is free, slide the other side away from the device.
- Pull the cover away from the device.

Step 16 — Remove the device cover



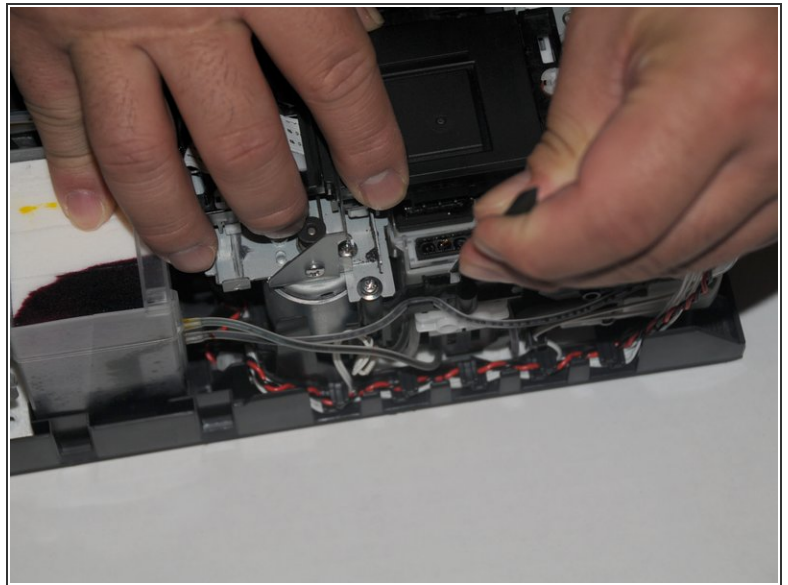
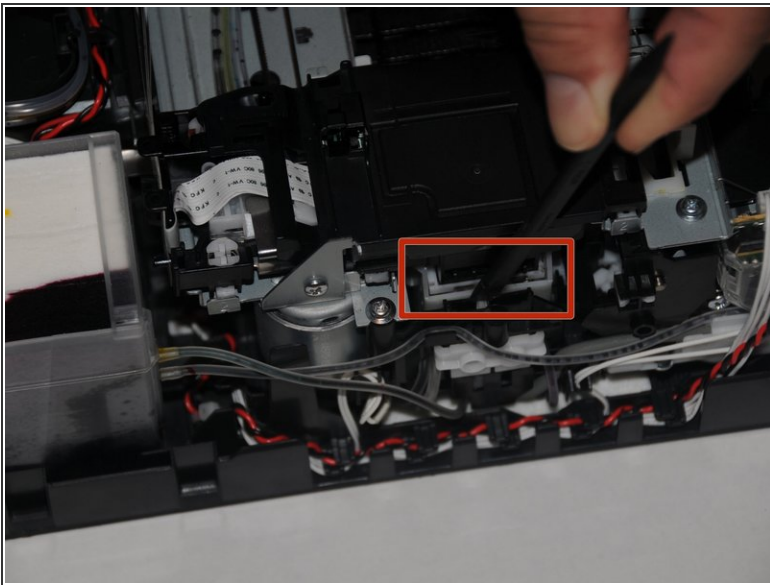
- Using a spudger, loosen the two clipped portions of the cover located at the back-center of the cover.
- Once the clips are free the rest of the cover can be lifted up and away from the device.

Step 17 — Release the clear print head guide wire



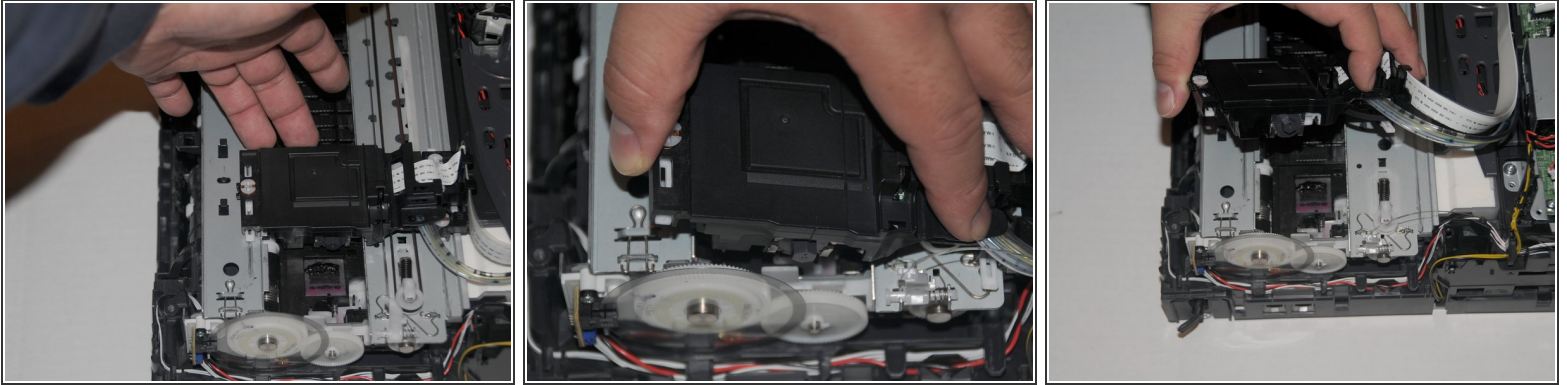
- Gently pull the wire to the left so the end of the wire is released.
- Slide the wire away from the top of the print head unit.

Step 18 — Releasing the print head from the carriage



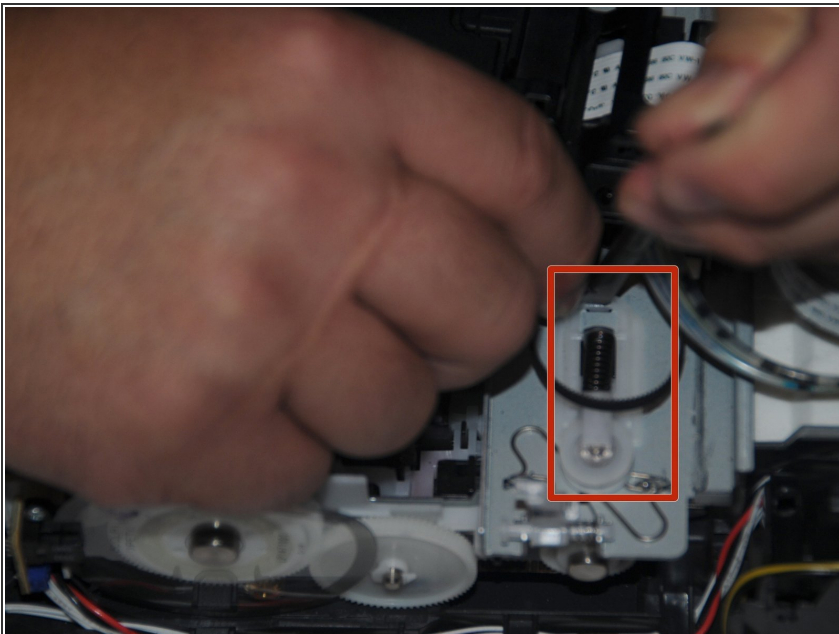
- Using a spudger, press down on the plastic housing of the carriage that the print head rests on.
- Slide the print head to the left of the device.

Step 19 — Removing the print head from the rails.



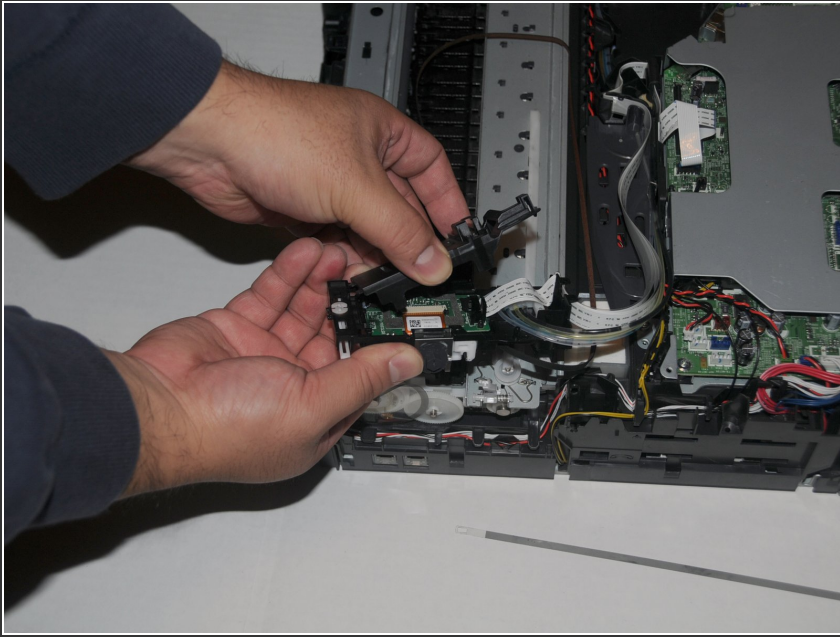
- Slide the print head until it is at the end of the rail.
- Push the print head unit towards the back of the device and lift the unit from the back rail.
- Gently, release the other end of the print head to release it from the front rail.

Step 20 — Release the print heat conveyor



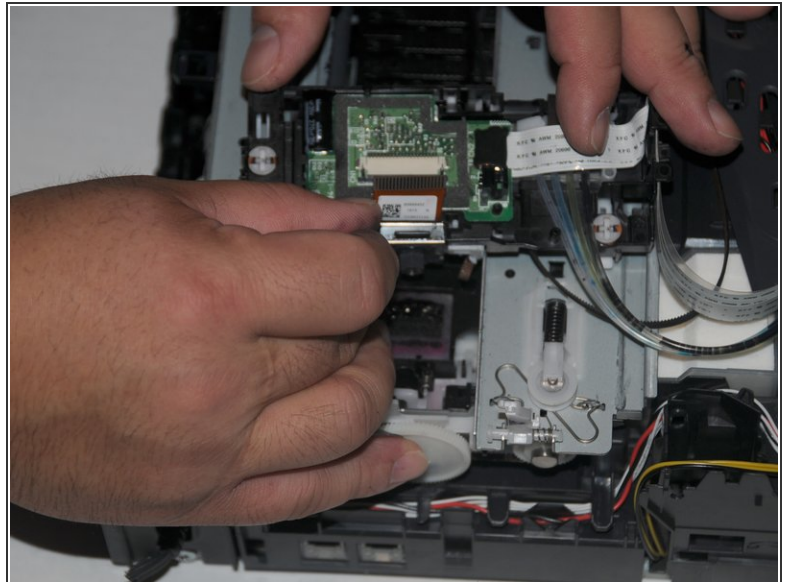
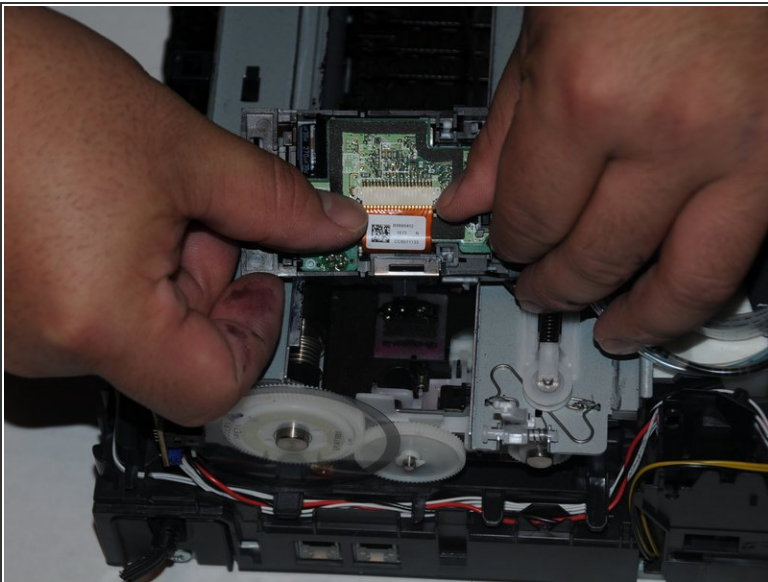
- Using the spudger, press the spring section of the white pulley.
- Release the conveyor from the pulley while the spring is still compressed.
- Remove the conveyor from the gear on the other side of the device.
- ⓘ Optional: Slide the conveyor off the print head.

Step 21 — Opening the top print head cover.



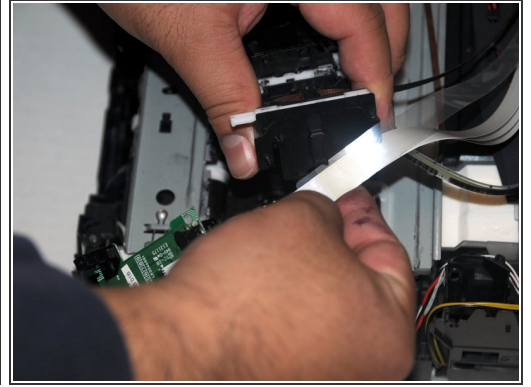
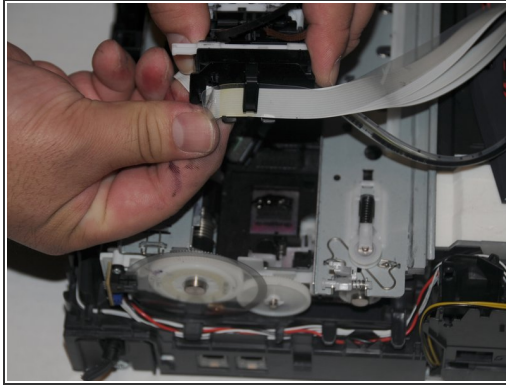
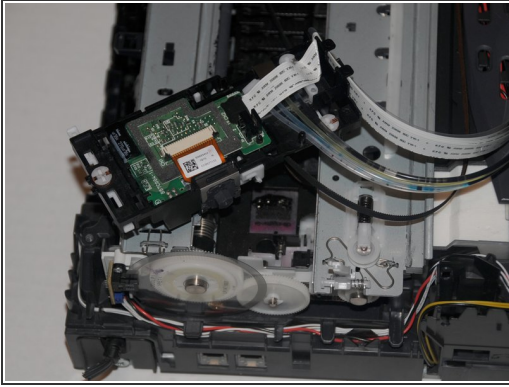
- Squeeze the ends of the cover, then release the cover, revealing the processor unit.

Step 22 — Remove the data cable from the print head processing unit.



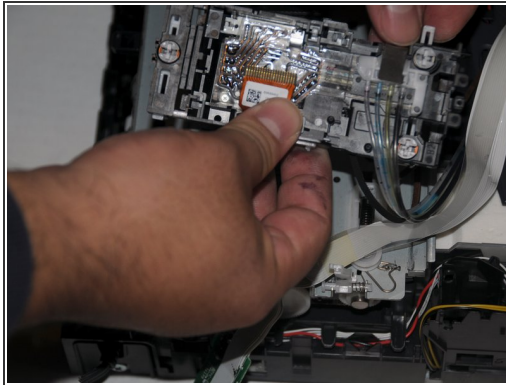
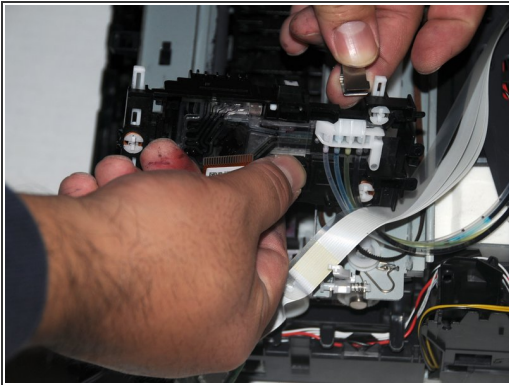
- Slide the black cap away from the port.
- Slide the data cable out of the port.

Step 23 — Remove print head processor unit



- Lift the processor out of the print head.
- Slide the cables attached to the processor away from the print head unit.

Step 24 — Remove the inkjet nozzle unit.



- Remove the metal clip holding the nozzle unit.
- Lift the unit from the rest of the print head unit.

To reassemble your device, follow these instructions in reverse order