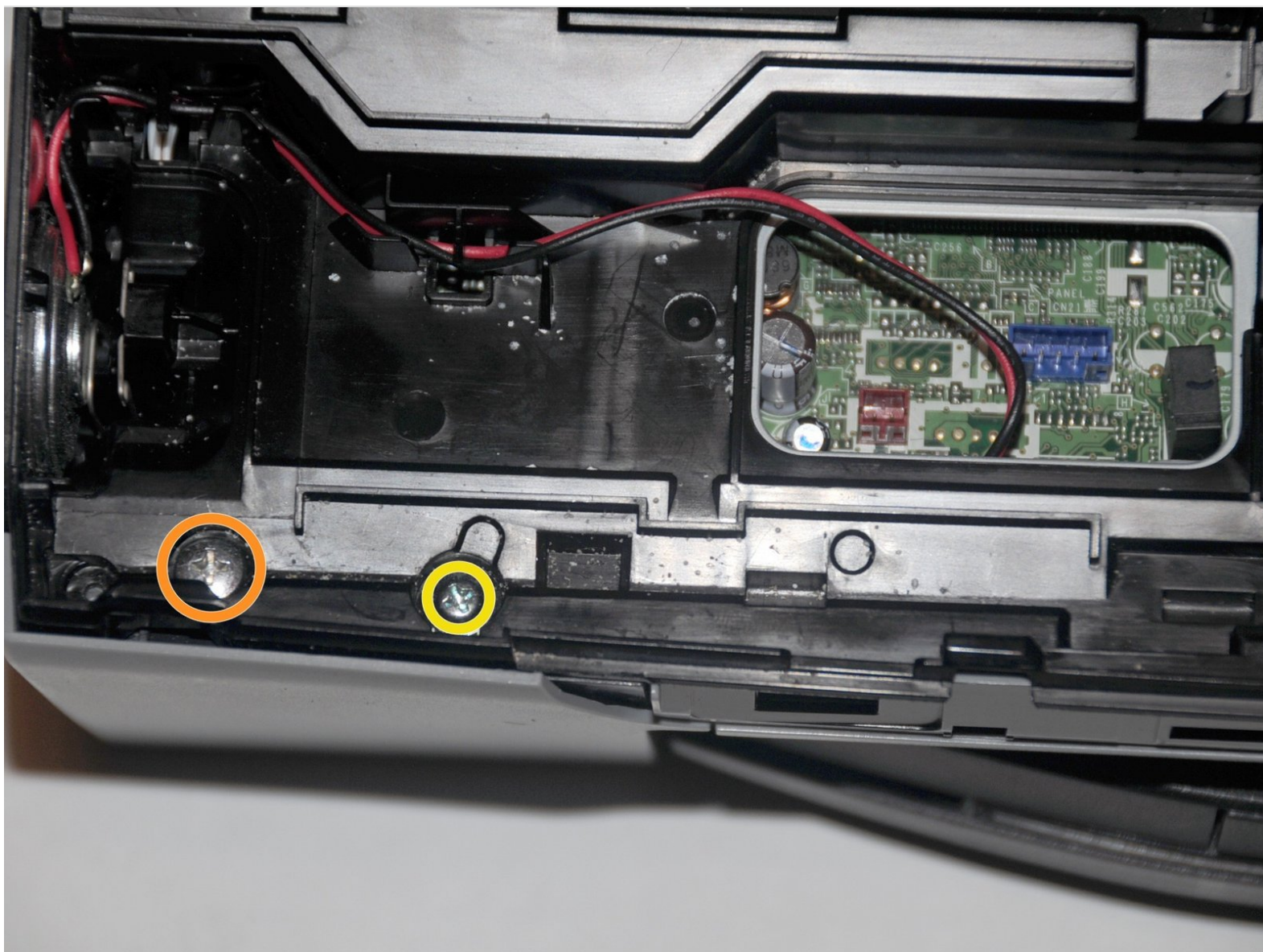




Brother MFC-490CW Wireless module Replacement

If you aren't getting a wireless connection with the device, and all other solutions didn't work, you might need to replace your wireless module. This guide will tell you how to remove it, find a place to get a new module, then replace it.

Written By: Matt



INTRODUCTION

Before you begin, make absolutely sure that you need to actually replace this module. [Here are some solutions to common wireless networking problems](#)

If all else fails, continue with this guide.



TOOLS:

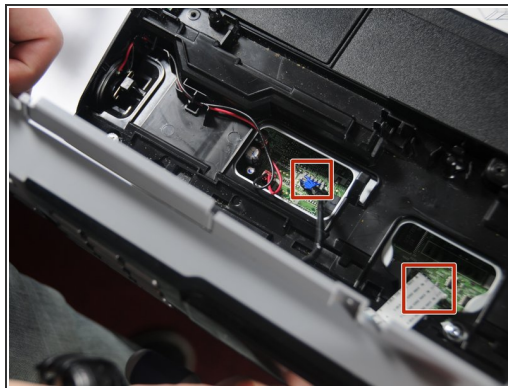
- [Phillips #2 Screwdriver](#) (1)
-

Step 1 — Remove screws holding the front panel



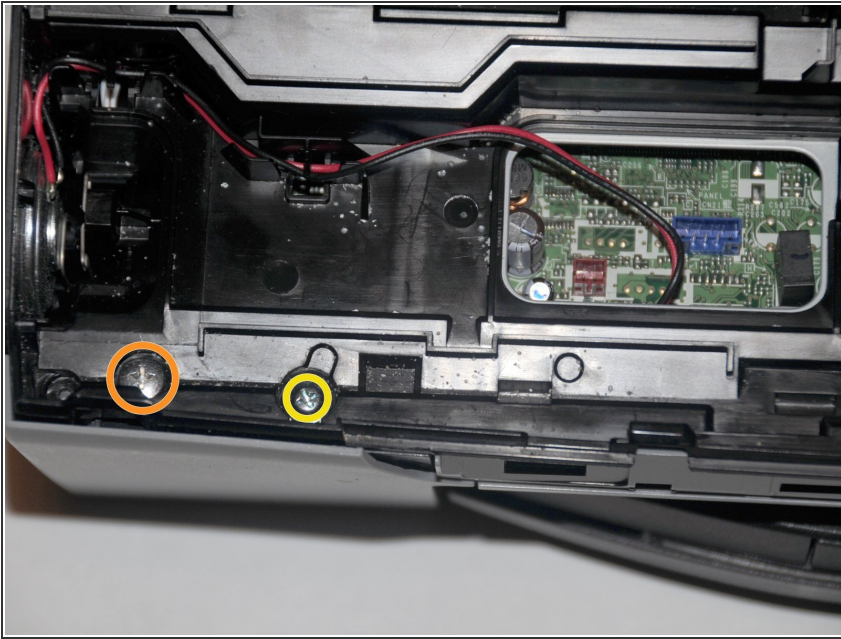
- Unscrew these three 12.1mm screws holding the control panel in place.

Step 2 — Unplug the panel from the rest of the printer



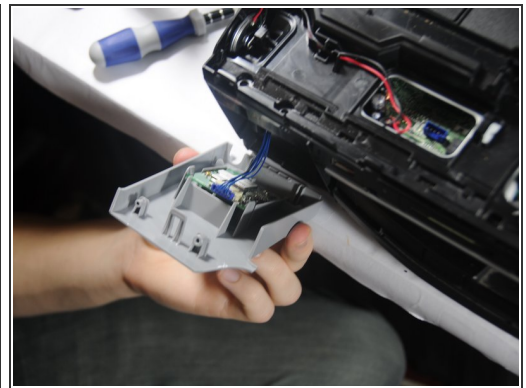
- Lift up the front panel from the device.
- Gently lift up and pull out the data cables that attach the panel to the printer.

Step 3 — Remove the screw



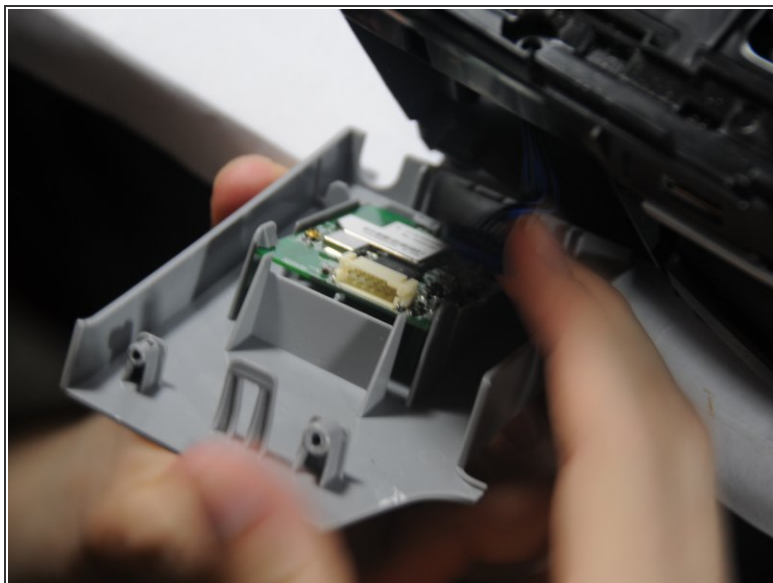
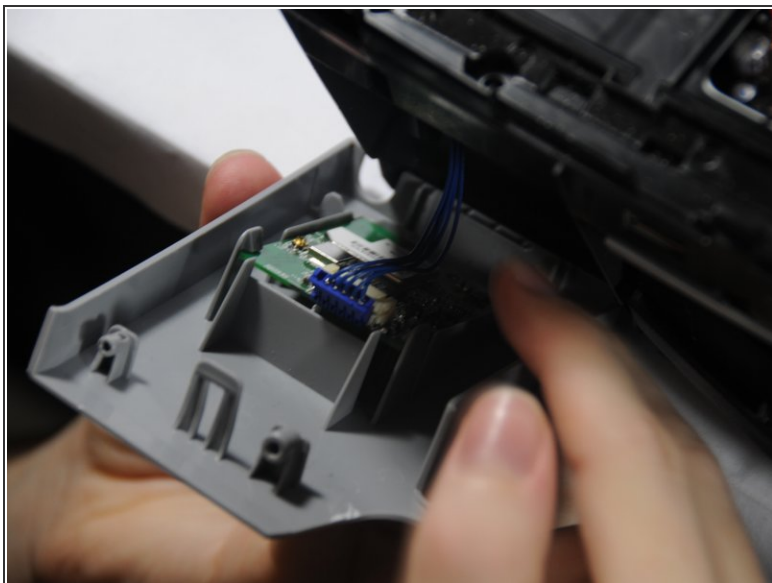
- Unscrew the 14.1mm screw located at the left side of the device.
- Unscrew the 12.1mm screw to the right of the 14.1mm screw.

Step 4



- Pry open the left front panel away from the printer
- Be careful. The panel is attached with a data cable.

Step 5



- Carefully unplug the connector attached to the device.

Step 6 — Remove the module from the panel



- Separate the two clips that hold the module in place.
- Lift up the module.

To reassemble your wireless module, follow these instructions in reverse order.