



Brother PT-1010 Battery Replacement

This guide will show you how to correctly replace the battery in your label maker.

Written By: Haley Sweet



INTRODUCTION

The Brother PT-1010 requires 6-AAA batteries. The batteries are organized in two layers one on top of the other. This guide will inform you on proper battery replacement.

Step 1 — Removing Back Panel



- Turn device so you are looking down at the top

Step 2



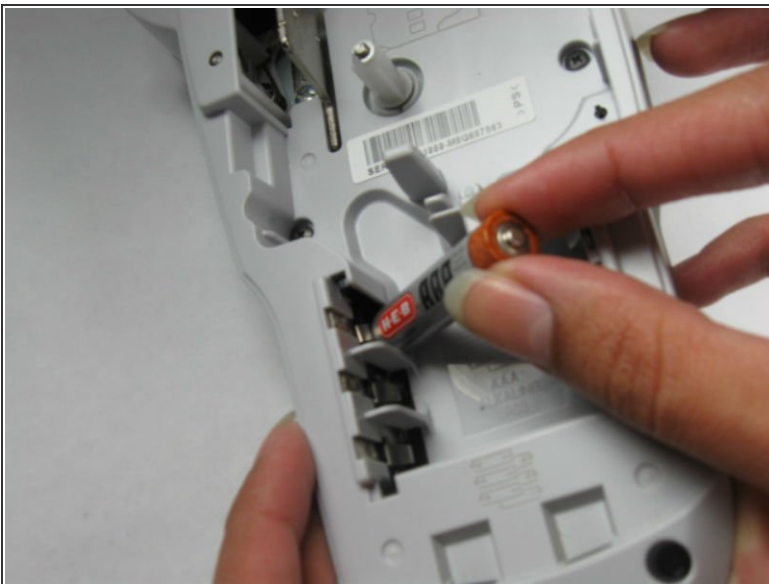
- Press firmly on arrow indicator and pull panel toward you.

Step 3 — Remove Dead Batteries



- Remove dead batteries one at a time by pulling up on the side indicated with a + symbol.
- ⓘ Make sure the battery compartment is empty and clear of debris.

Step 4



- Insert the first battery with the flat side (indicated by a - symbol on the battery) facing to the left of the battery compartment.
- Do the same thing to insert the next 2 batteries.

Step 5



- The next 3 batteries will be inserted on top of the others.
- Insert the 4th battery with the flat side (indicated by the - symbol on the battery) facing to the right of the battery compartment.

Step 6



- Repeat step 5 to insert the last 2 batteries.

Step 7 — Replace Back Panel



- Reinsert back panel.

To reassemble your device, follow these instructions in reverse order.