



Brother PT-1010 Keyboard Replacement

This guide will show you how to remove and replace the keyboard of your Brother PT-1010 label maker.

Written By: Haley Sweet





TOOLS:

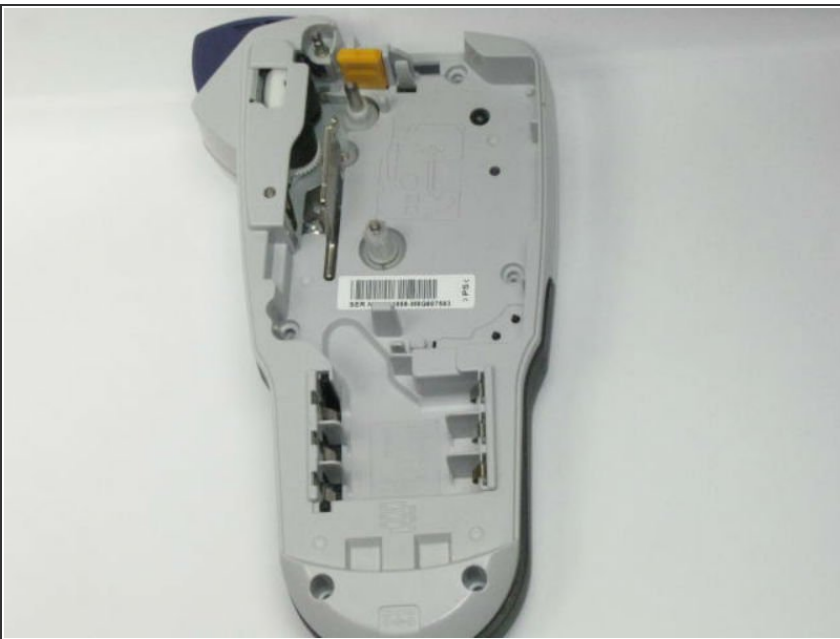
- [Phillips #00 Screwdriver](#) (1)
-

Step 1 — Remove Back Cover



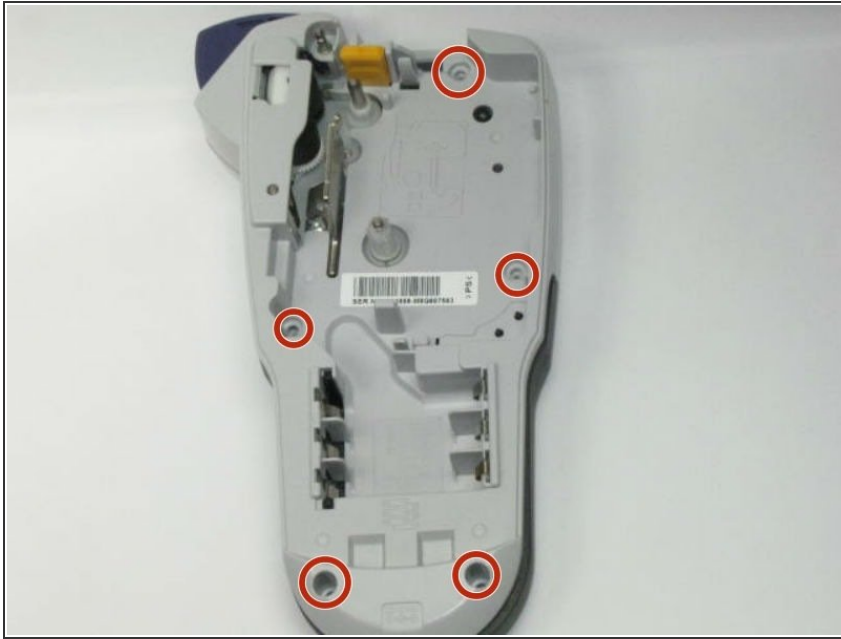
- Flip the device over and press down on the indication arrows located at the top center of the back cover and pull it open.

Step 2



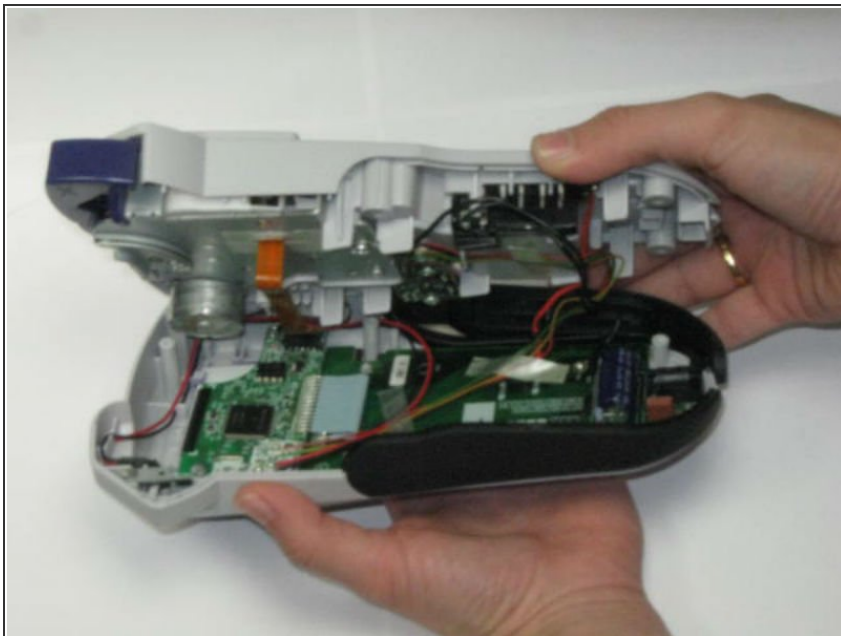
- Remove batteries, cassette tape, and cutter blade.

Step 3 — Remove Screws



- Use a phillips size #00 screwdriver to unscrew the 5 corner screws circled in the picture.

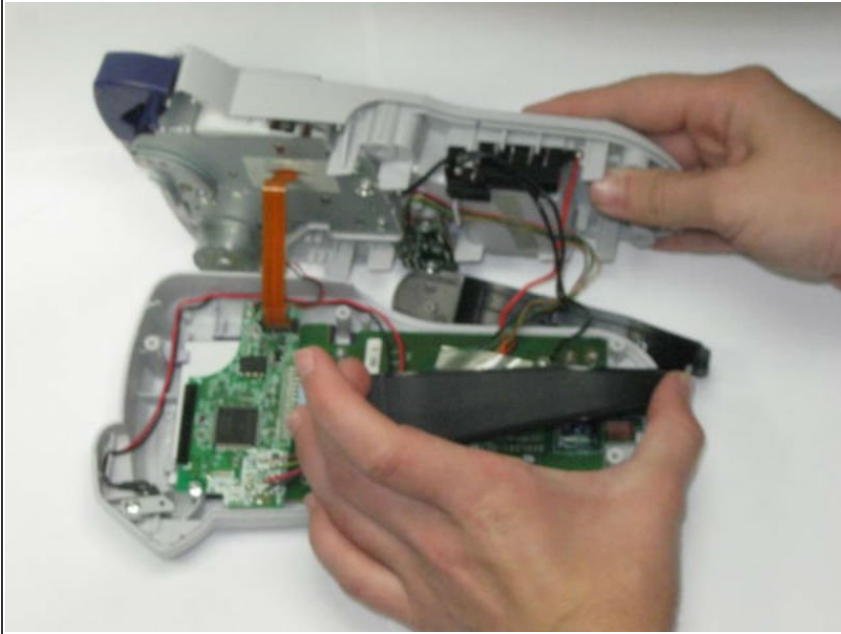
Step 4 — Separate Device



- Separate the top of the device from the bottom. Be very cautious when you separate the device, there is a

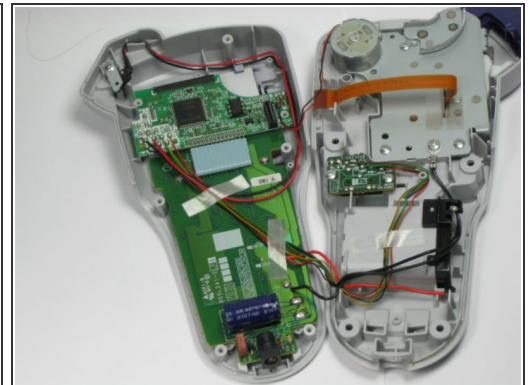
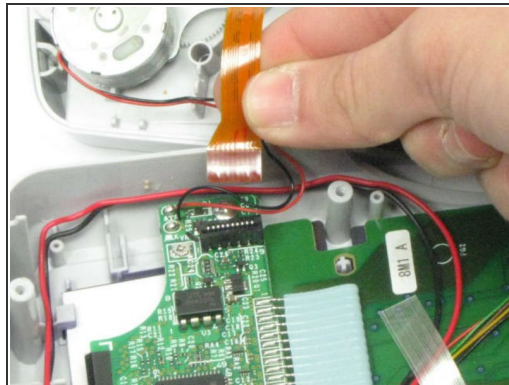
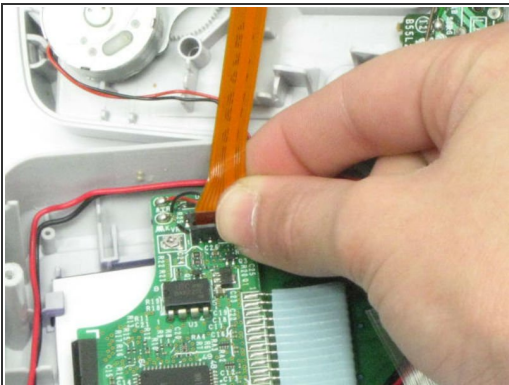
ribbon attaching the top to the bottom.

Step 5 — Remove side panels



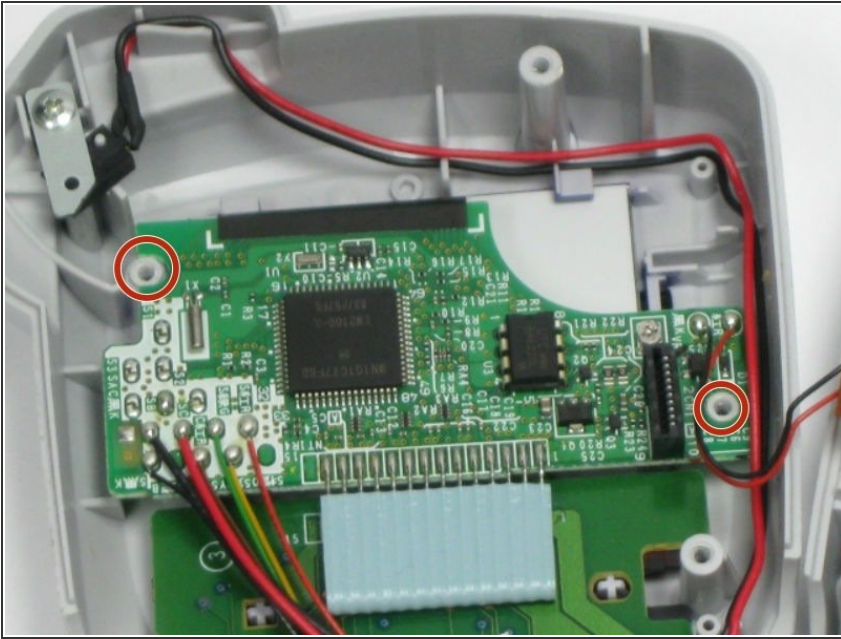
- Remove the two black side panels. They will easily fall out so just move them to the side until you are putting your device back together.

Step 6 — Pull Ribbon Out



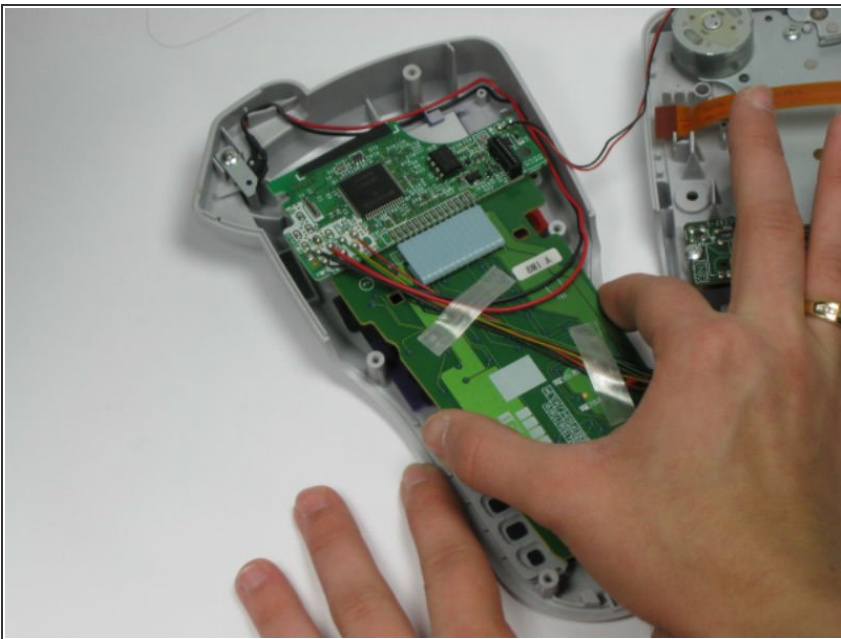
- Using your index finger and thumb, pull out the golden ribbon from the green circuit board.

Step 7 — Remove Screws from Circuit Board



- Use a phillips size #00 screwdriver to remove the two screws, circled in red, from the green circuit board.

Step 8 — Remove Circuit Board

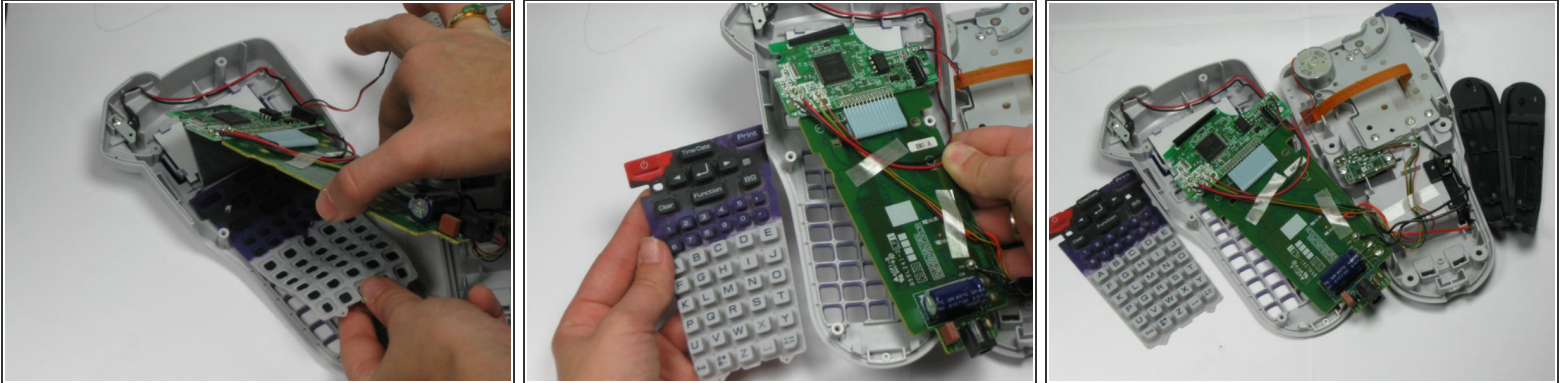


- Carefully remove the green circuit board by pulling it straight up. Be careful not to break the LCD cable

ribbon that connects the circuit board to the device.

- ⓘ The ribbon is very fragile so be careful to break it when pulling up on the circuit board.

Step 9 — Peel Off Rubber Keyboard



- Underneath the circuit board you will find the rubber keyboard. Peel this off and remove it from the device.

To reassemble your device, follow these instructions in reverse order.