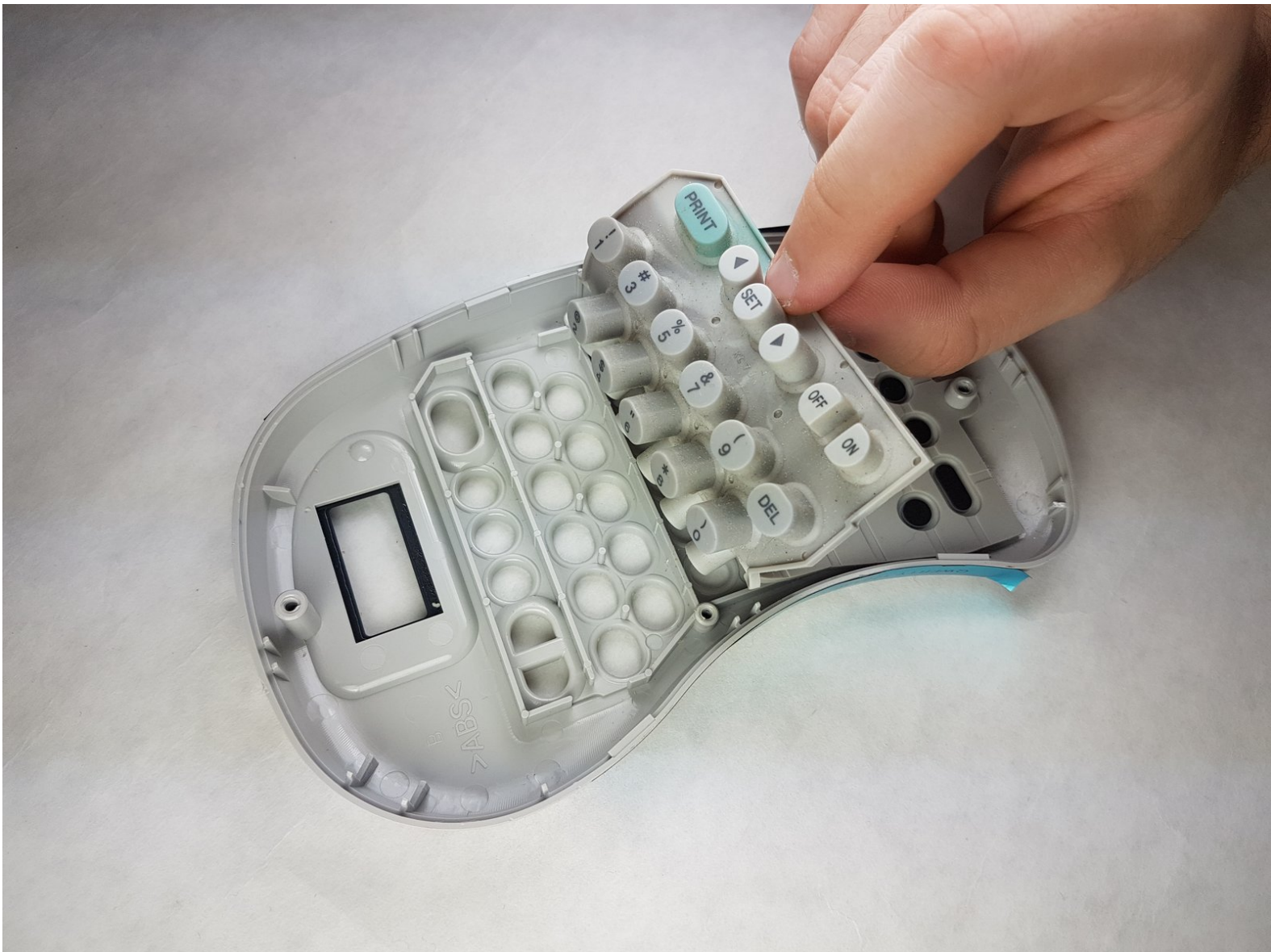




# Brother PT-110 Keypad Contacts Replacement

If your keypad contacts are broken or missing, this guide will help you to replace them.

Written By: Kimberly Larsen



---

## INTRODUCTION

This guide will show you how to take apart the back panel to replace the keypad contacts.

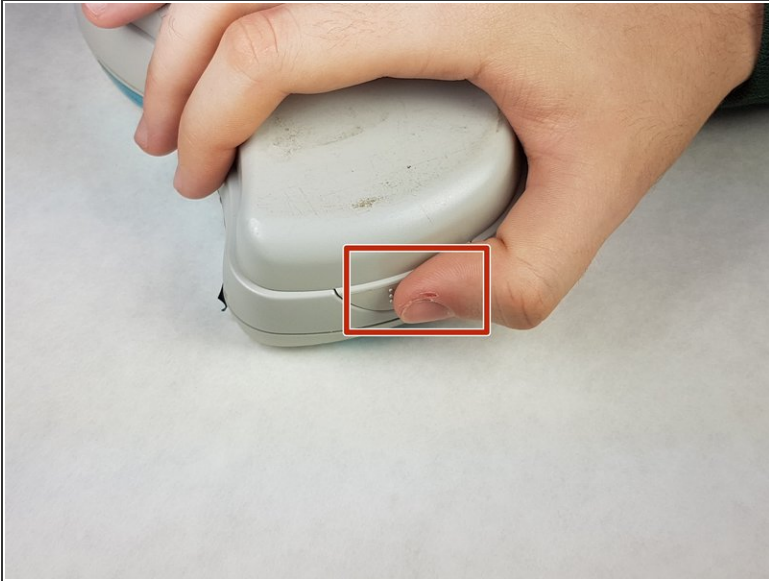
---



### TOOLS:

- [Phillips #1 Screwdriver](#) (1)
  - [Metal Spudger](#) (1)
-

## Step 1 — Batteries



- Push on the side of the cover, and remove it.

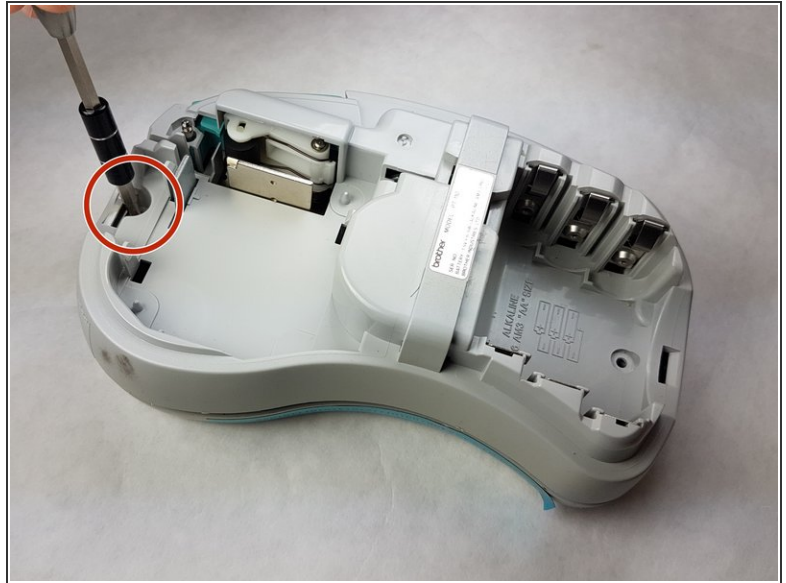
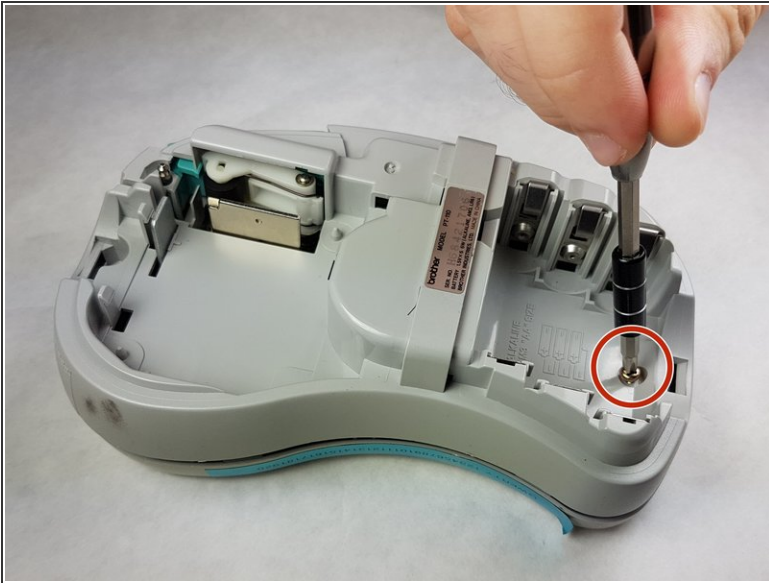
## Step 2



- Remove the batteries.



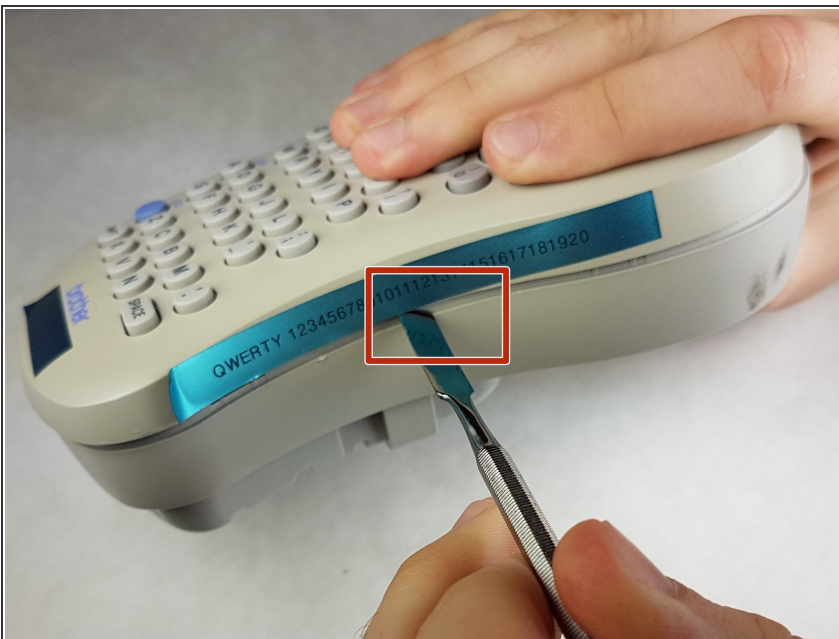
### Step 3 — Back Plate




- Unscrew the two 9 mm Phillips #1 screws from the top and bottom.

**i** Total: 2 x Screws

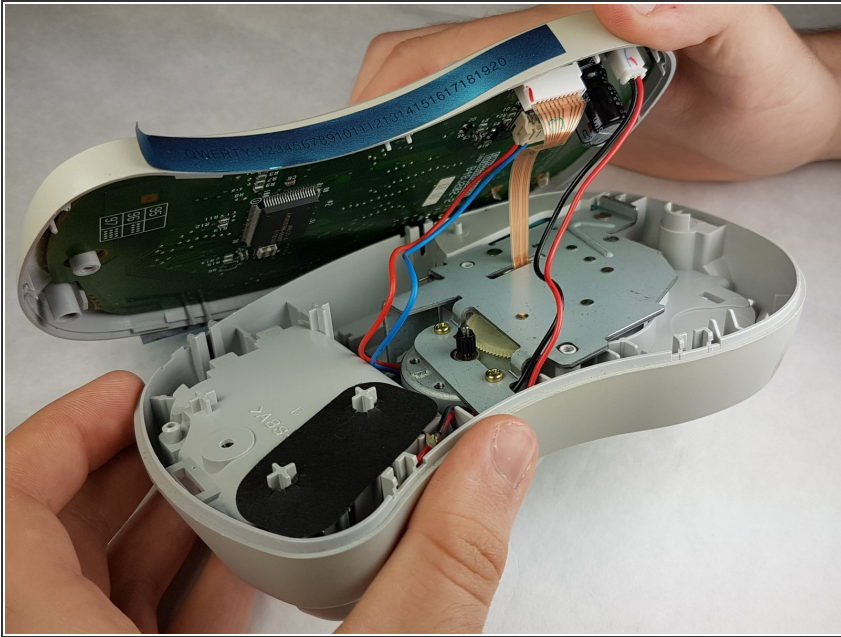
### Step 4




- First: To separate the top cover from the body, insert a spudger between the two halves.
- Gently twist the spudger until the two halves separate. Do this in multiple spots around the perimeter of the cover to distribute the pressure.

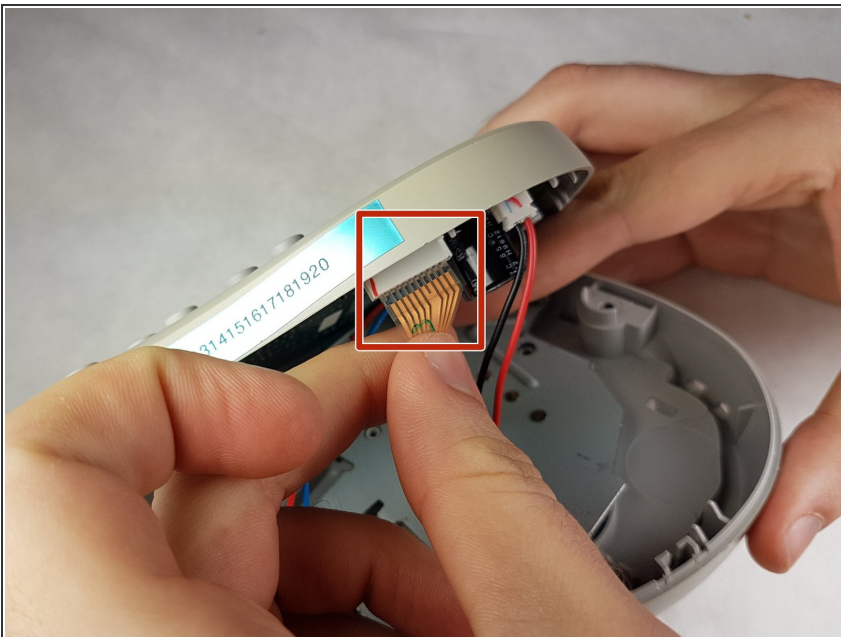
-  **DO NOT PULL HALVES APART.**  
There are wired connections inside that must be disconnected before halves can be fully separated.

## Step 5



-  Gently separate the two covers, ensuring wires are not taut.

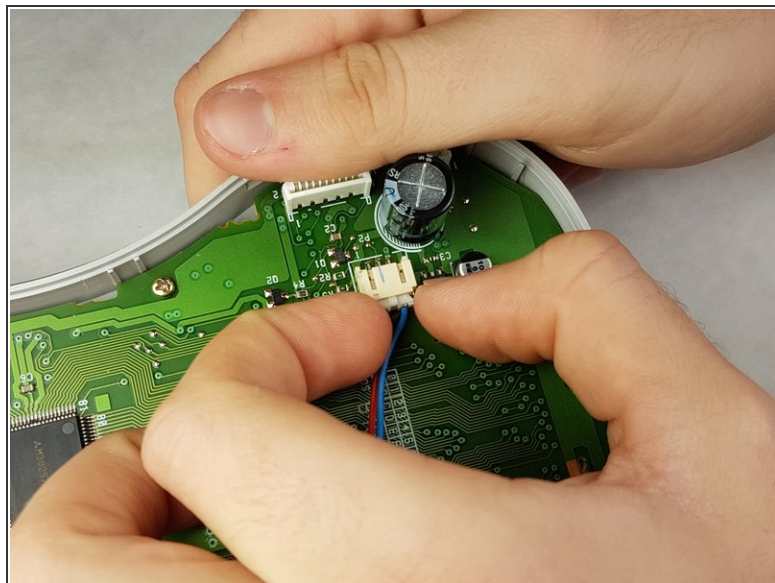
## Step 6



- Gently grasp the ribbon wire and top cover, then gently pull the ribbon wire out of its connection.

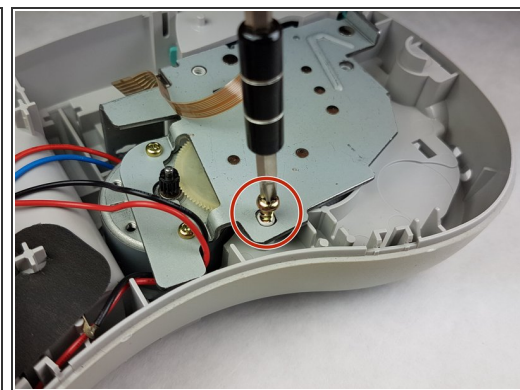
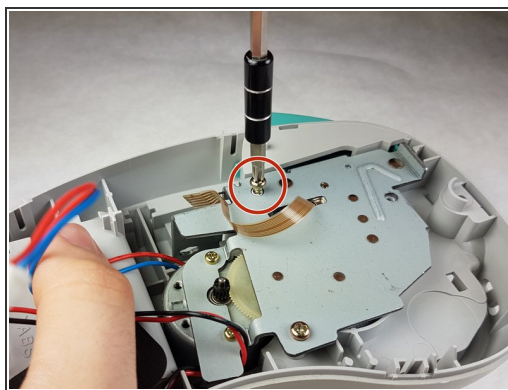
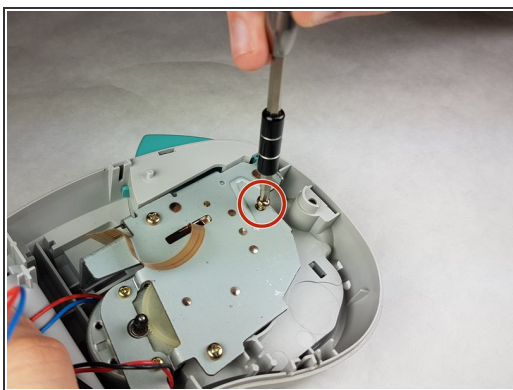


## Step 7



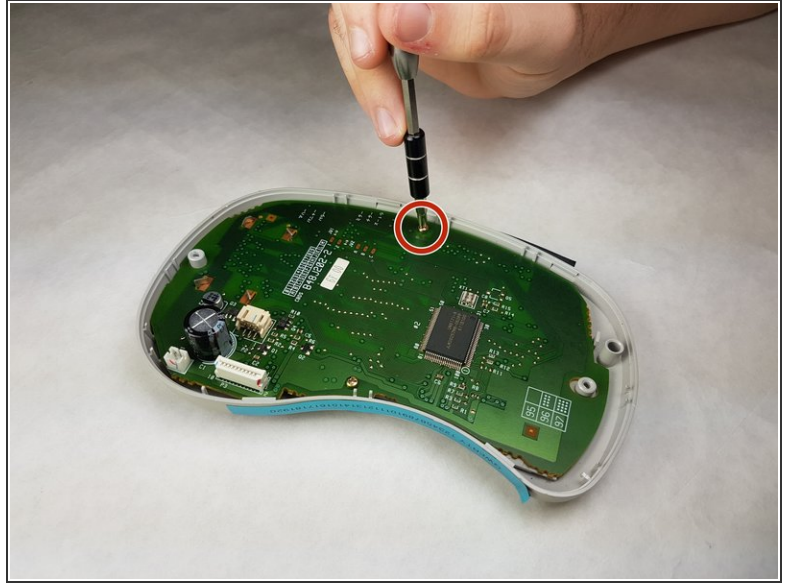
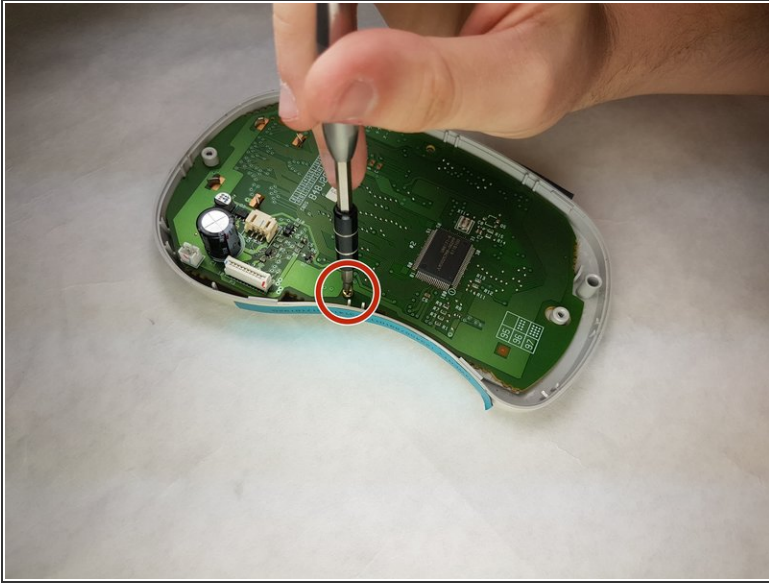
- Carefully pinch the top of the connector.
- Pull perpendicular to the device until the wire is disconnected.
- ⓘ It may require more force than expected to disconnect the wires.

## Step 8




- Unscrew the three 9 mm Phillips #1 screws shown.
- ⓘ Total: 3 x Screws

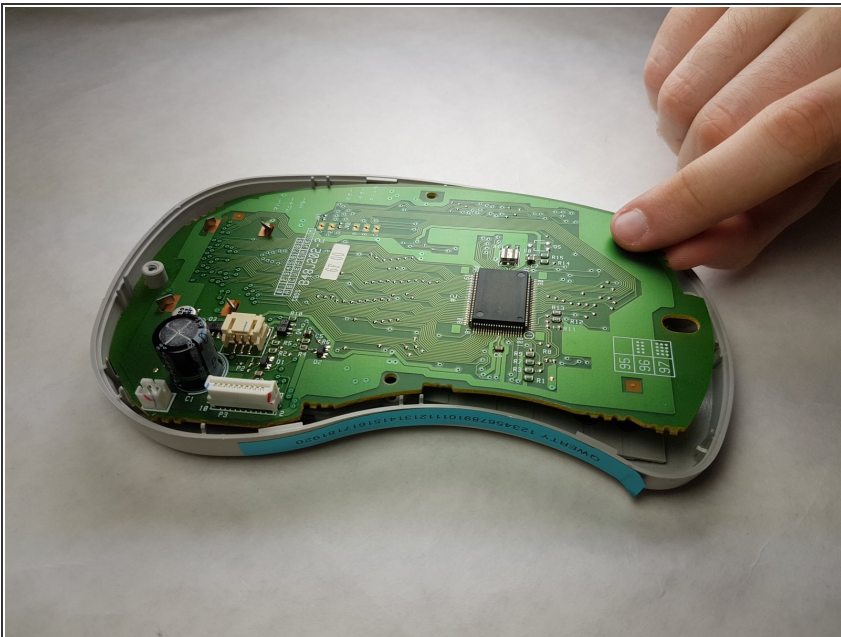
## Step 9 — Keypad Contacts



- Unscrew both 6 mm Phillips #1 screws from the circuit board.

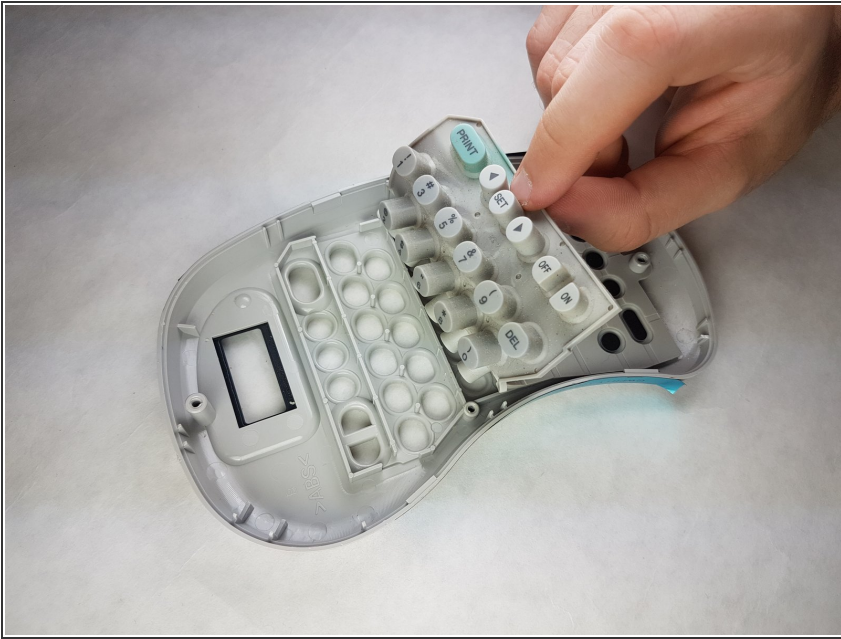
 Total screws: 2

## Step 10



- Gently lift the circuit board out.

## Step 11



- Peel the keypad contacts up from the plastic casing.

To reassemble your device, follow these instructions in reverse order.