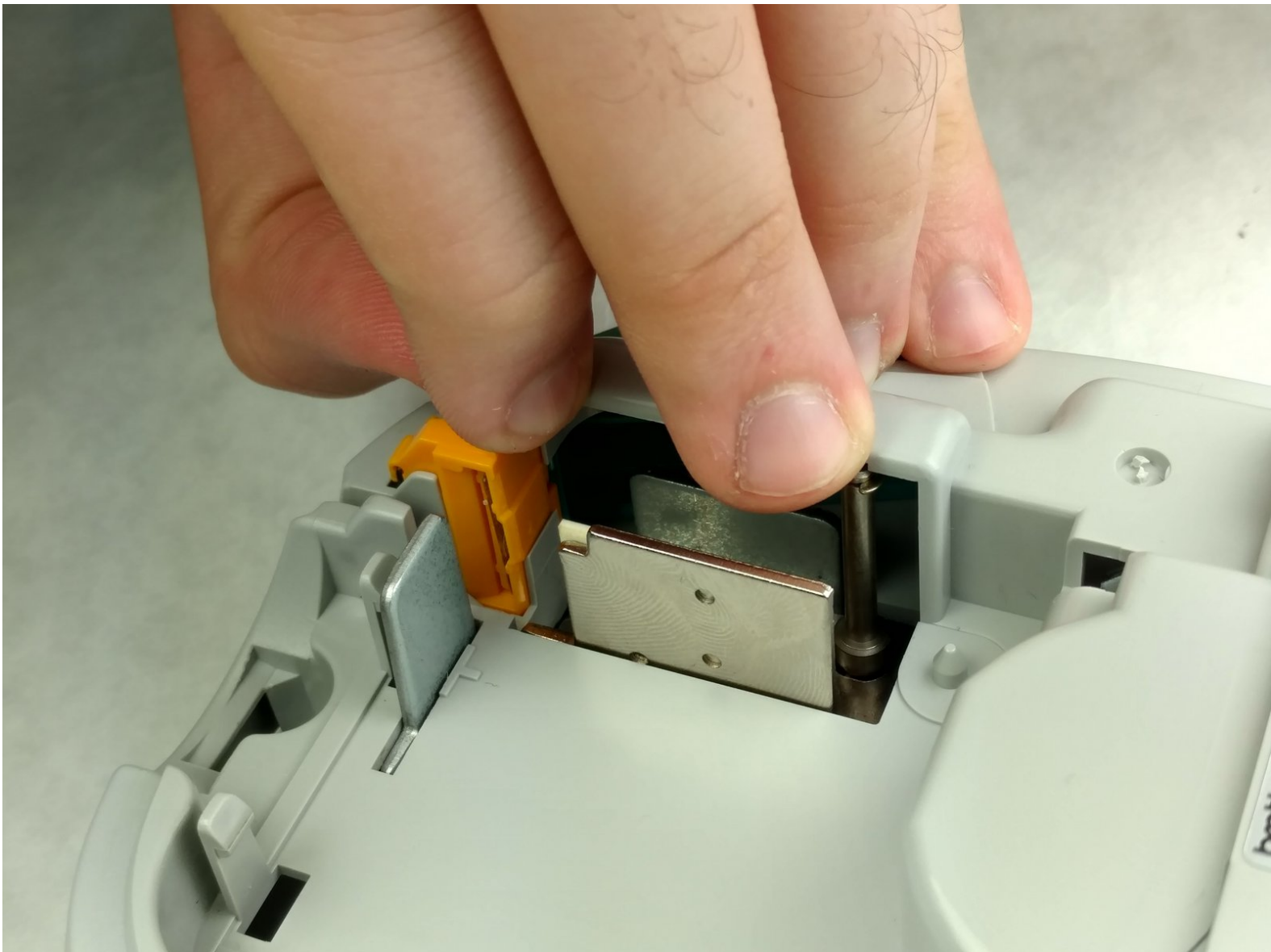




# Brother PT-110 Paper Cutter Replacement

Use this guide if you need to remove or replace the paper cutter.

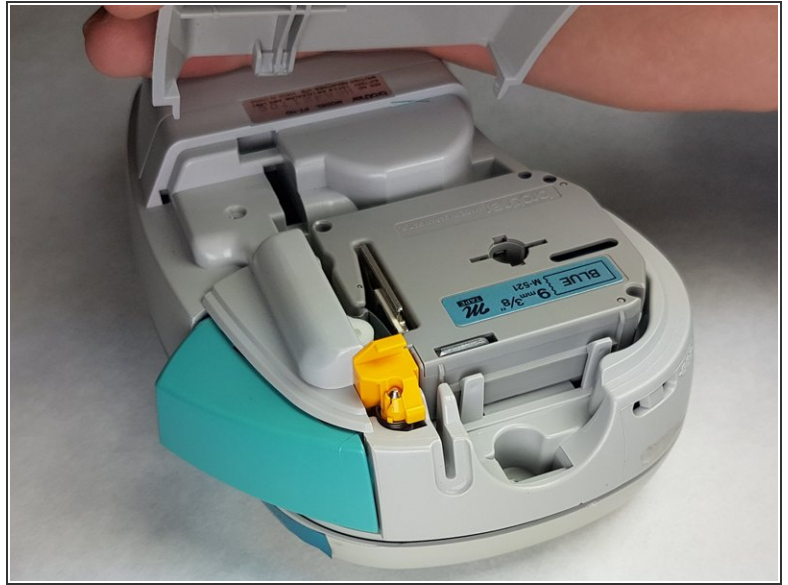
Written By: Kimberly Larsen



## INTRODUCTION

The paper cutter is located at the rear of the device, at the top right-hand side.

## Step 1 — Tape Cassette



- Push on the side of the cover, and pull up to remove it.

## Step 2



- Remove the tape cassette.

## Step 3 — Paper Cutter



- Lift up the cutter.

To reassemble your device, follow these instructions in reverse order.