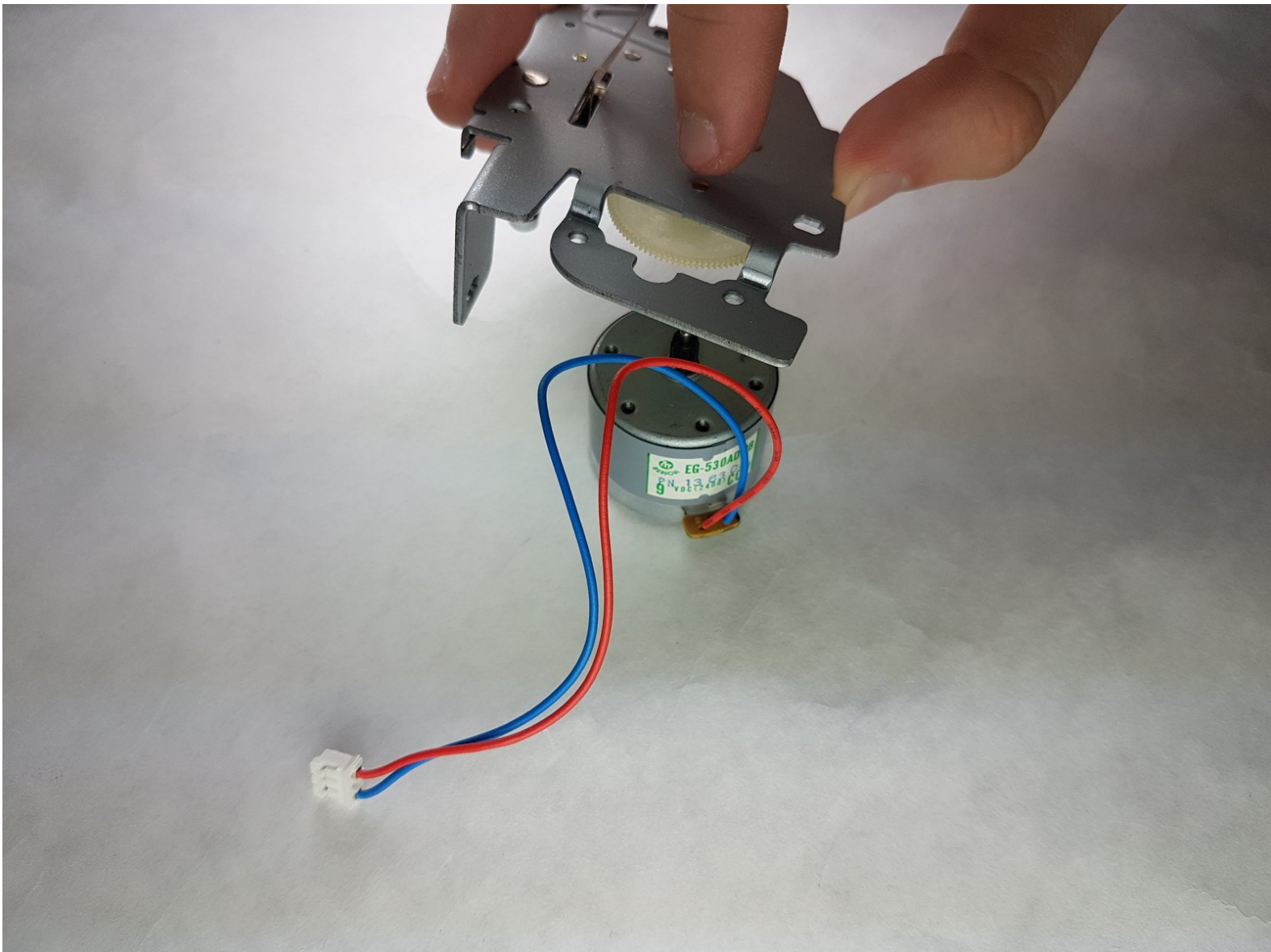




# Brother PT-110 Printer Motor Replacement

This guide will walk you through replacing the printer motor.

Written By: Kimberly Larsen



---

## INTRODUCTION

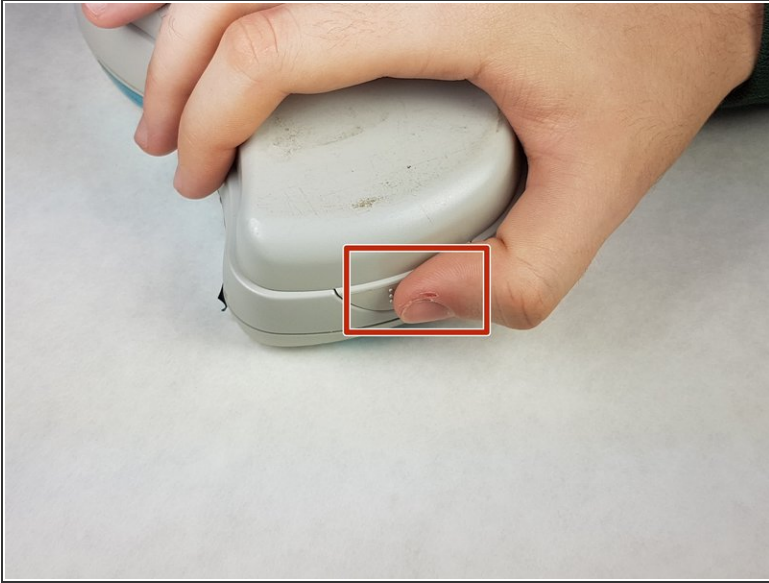
The printer motor is located behind the keyboard, near the middle of the device. To access it, the back panel needs to be snapped off and the printer cartridge taken out. The middle panel needs to be unscrewed, and the motor should be visible.



### TOOLS:

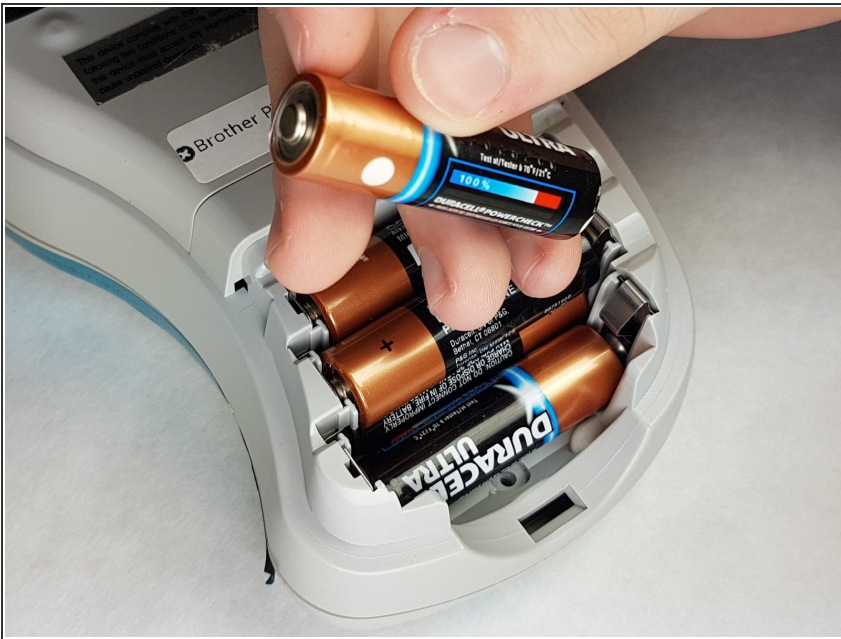
- [Phillips #1 Screwdriver](#) (1)
  - [Metal Spudger](#) (1)
-

## Step 1 — Batteries



- Push on the side of the cover, and remove it.

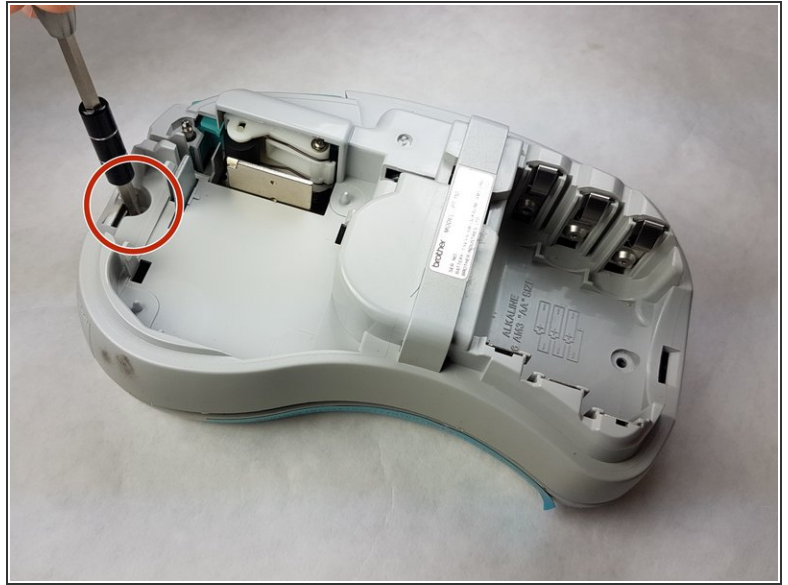
## Step 2



- Remove the batteries.



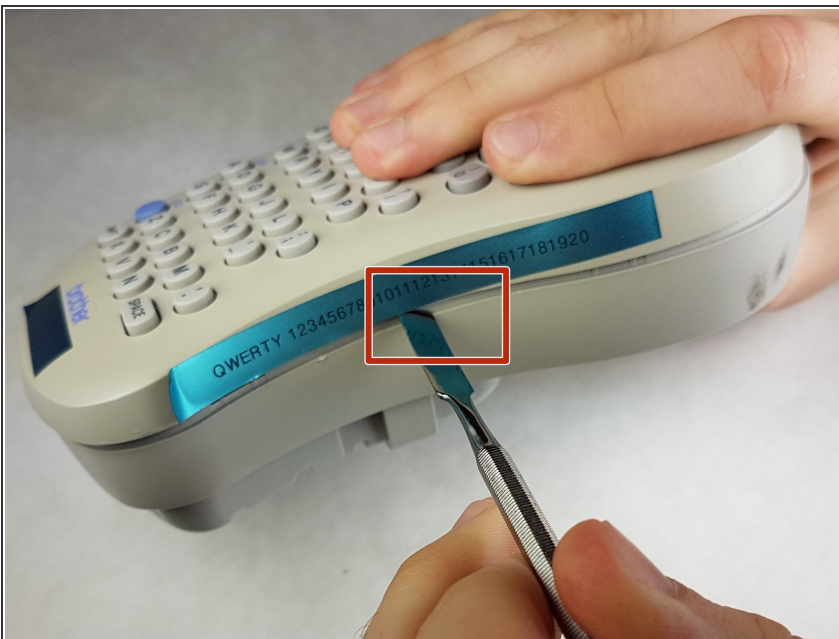
### Step 3 — Back Plate




- Unscrew the two 9 mm Phillips #1 screws from the top and bottom.

**i** Total: 2 x Screws

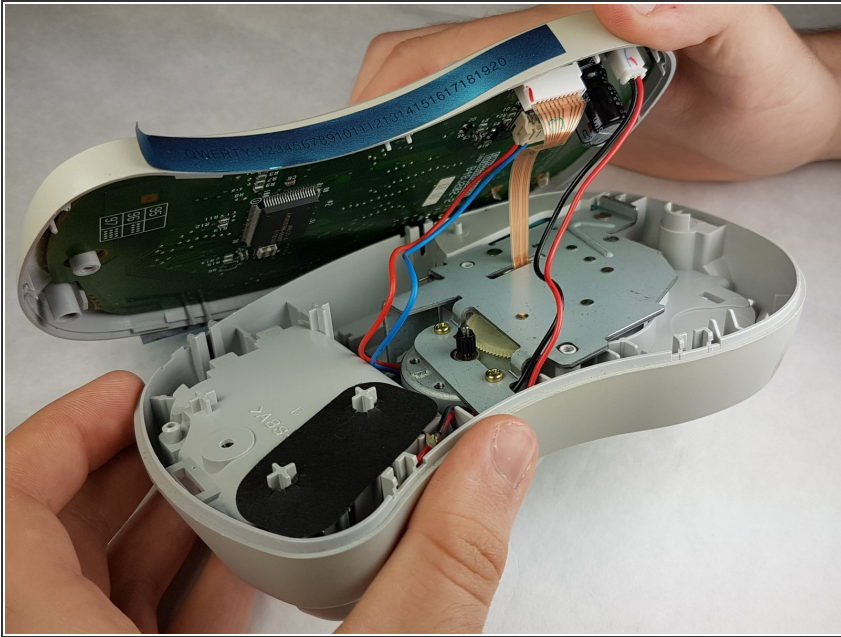
### Step 4




- First: To separate the top cover from the body, insert a spudger between the two halves.
- Gently twist the spudger until the two halves separate. Do this in multiple spots around the perimeter of the cover to distribute the pressure.

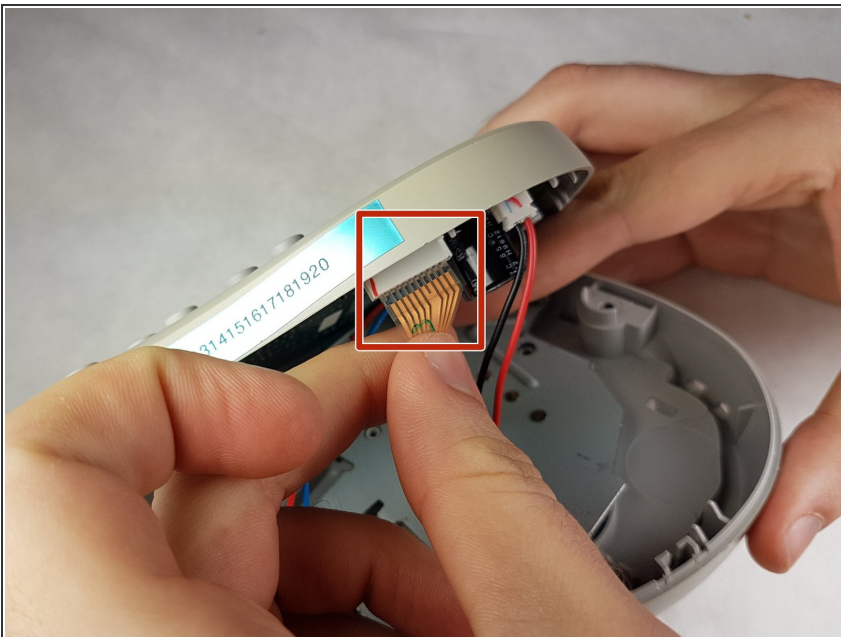
-  **DO NOT PULL HALVES APART.**  
There are wired connections inside that must be disconnected before halves can be fully separated.

## Step 5



-  Gently separate the two covers, ensuring wires are not taut.

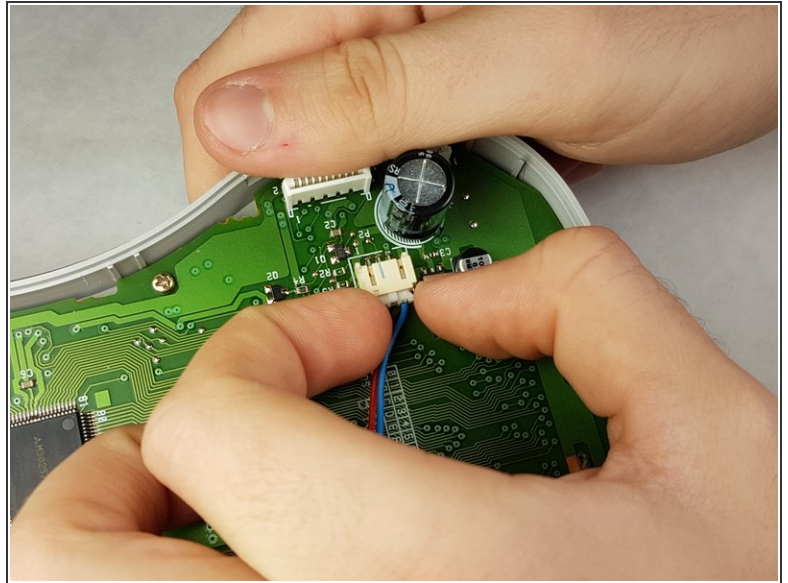
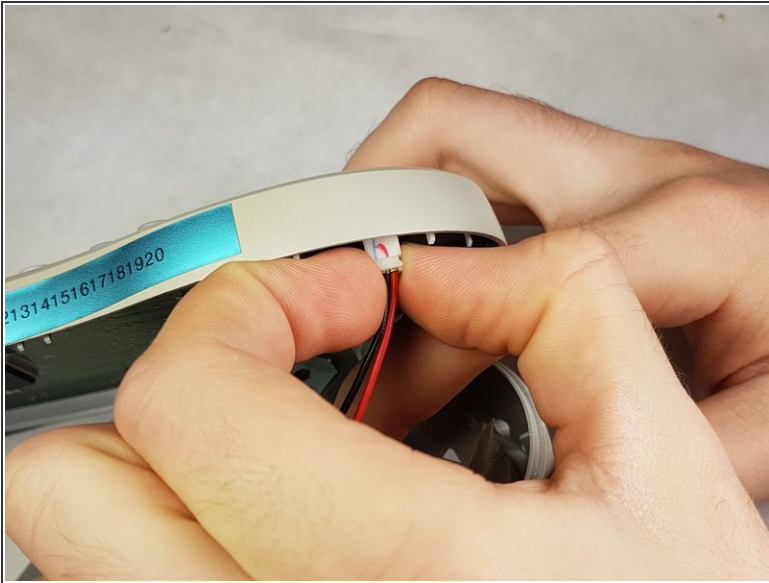
## Step 6



- Gently grasp the ribbon wire and top cover, then gently pull the ribbon wire out of its connection.

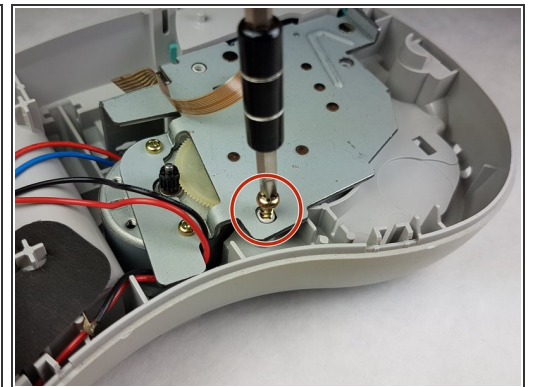
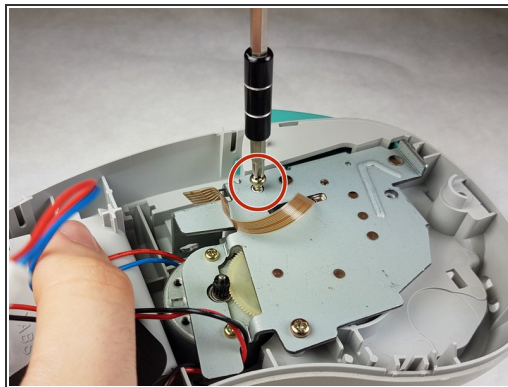
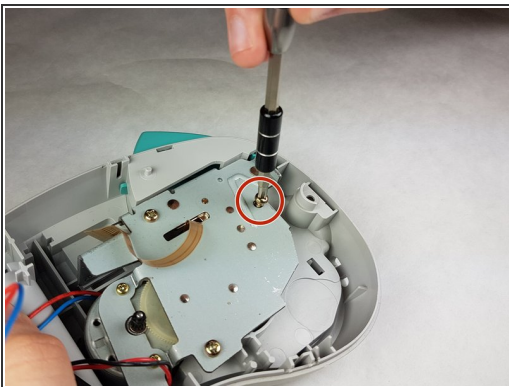


## Step 7



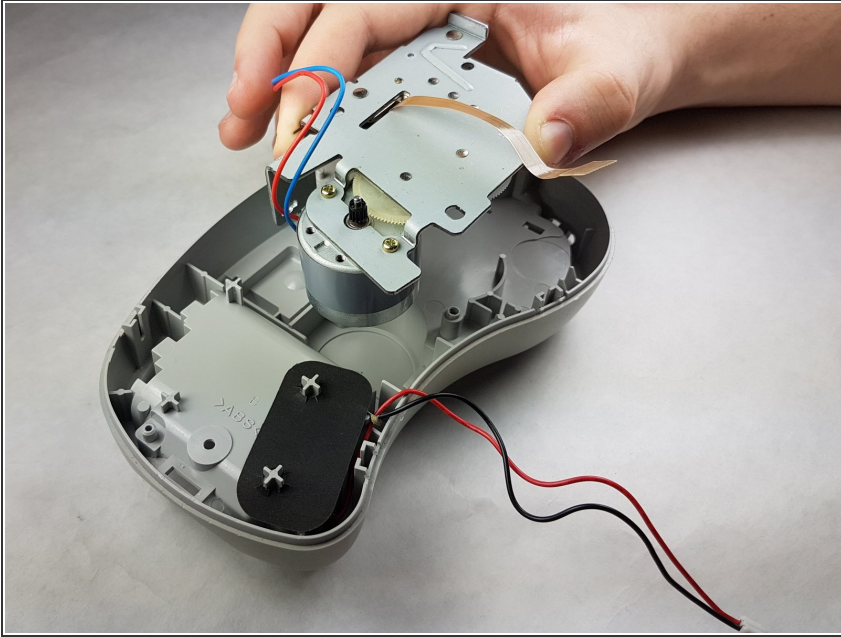
- Carefully pinch the top of the connector.
- Pull perpendicular to the device until the wire is disconnected.
- ⓘ It may require more force than expected to disconnect the wires.

## Step 8



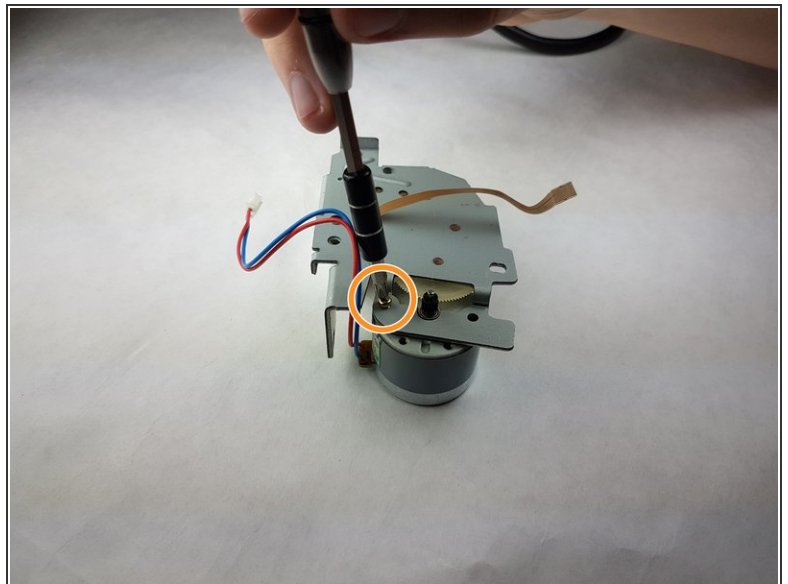
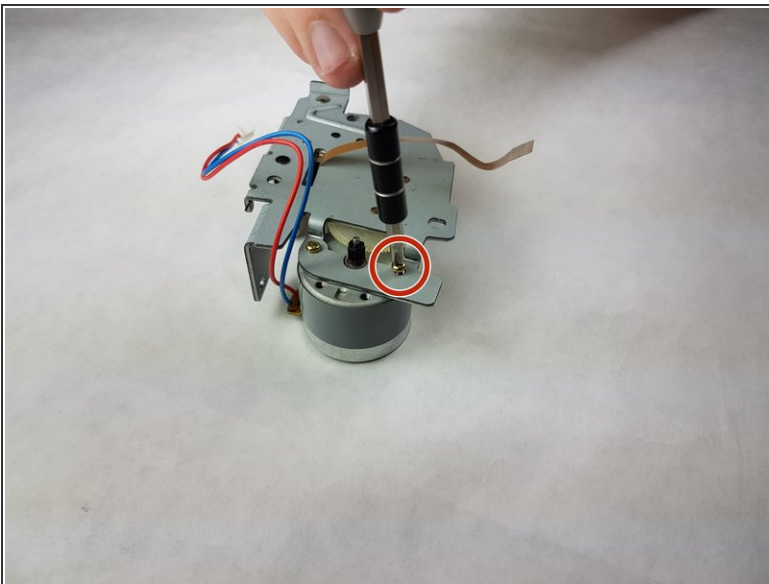
- Unscrew the three 9 mm Phillips #1 screws shown.
- ⓘ Total: 3 x Screws

## Step 9 — Printer Motor




- Remove the motor housing.

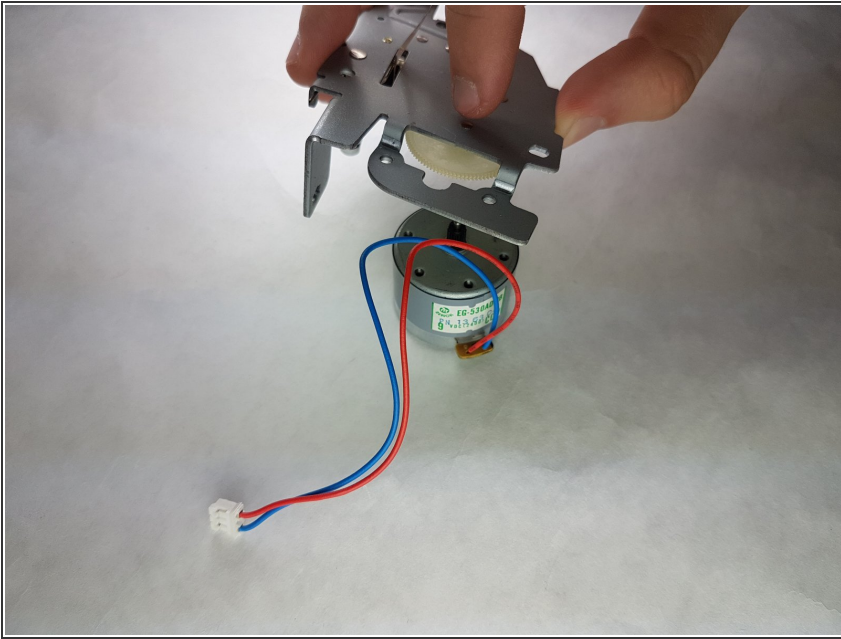
## Step 10



- Unscrew the two 3 mm Phillips #1 screws from the motor housing.

 Total: 2 x Screws

## Step 11



- Remove the motor.

To reassemble your device, follow these instructions in reverse order.