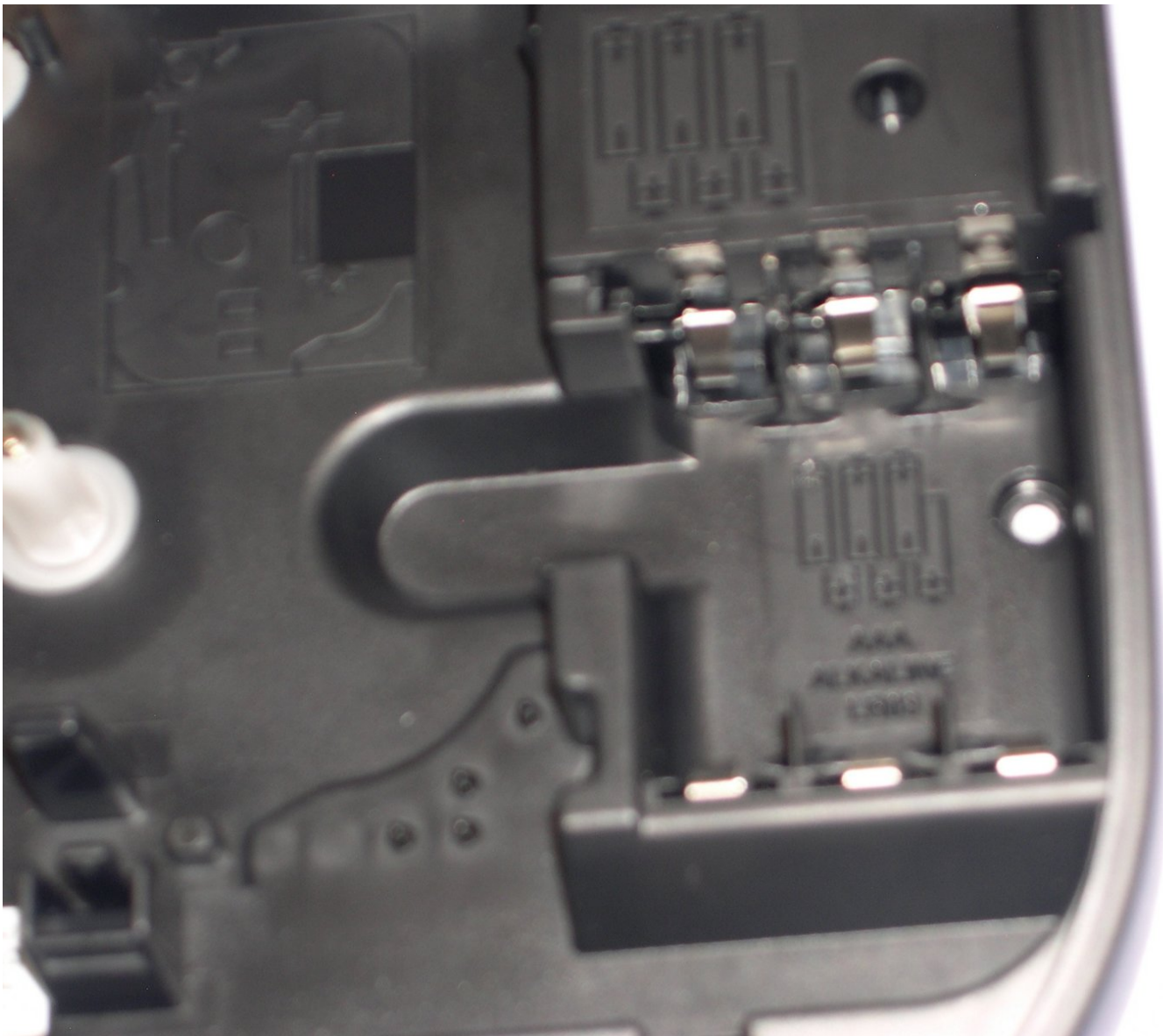




# Brother PT-1290 Battery/AC Adapter Replacment

step by step procedure to see why your brother label maker isn't powering on or shuts off shortly after it's powered on.

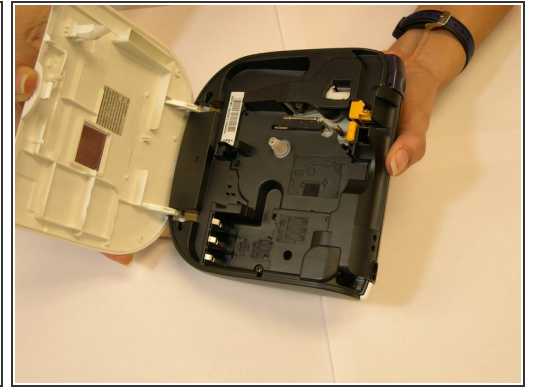
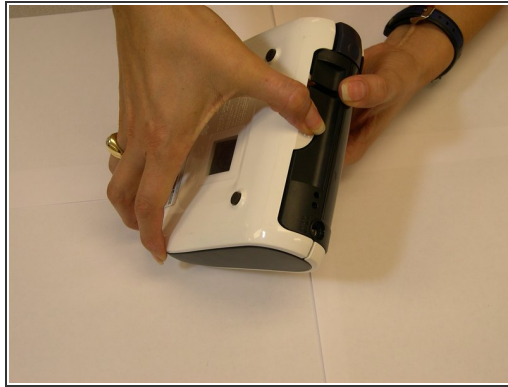
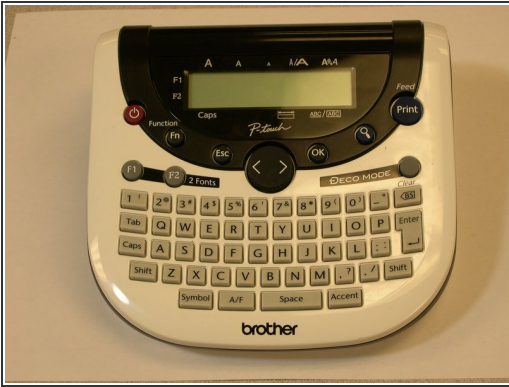
Written By: Lorraine Canez



# INTRODUCTION

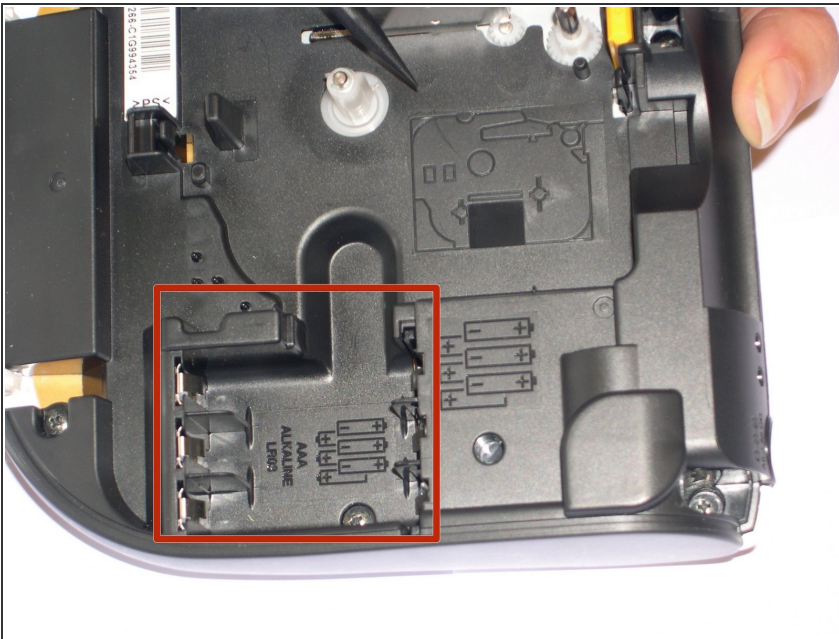
In this guide, you will see why your Brother PT-1290 isn't powering up correctly or at all.

## Step 1 — Brother PT-1290 Battery/AC Adapter



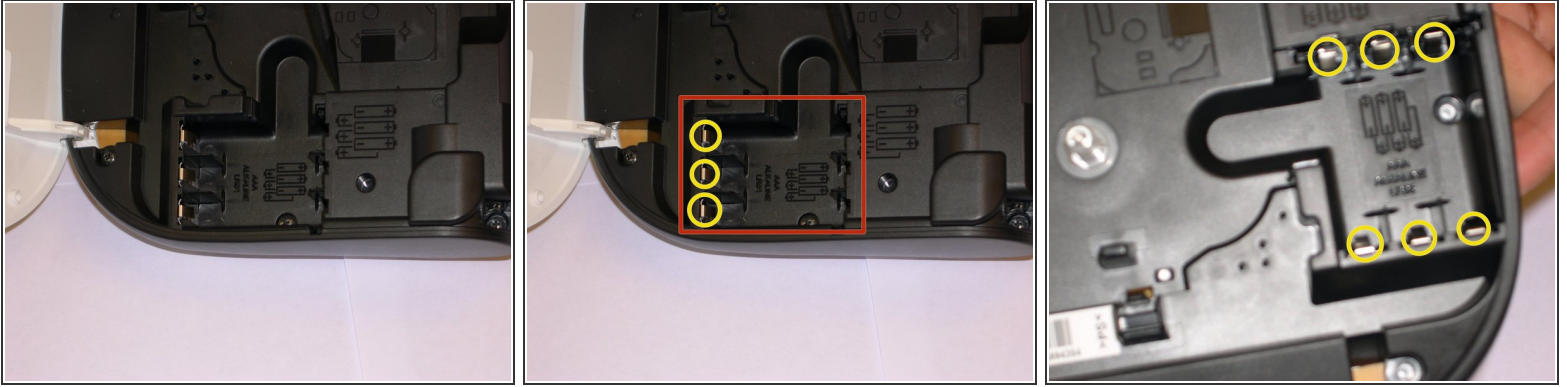
- First, flip over your label maker and push down on the top part (by the face plate) and push on the circle part with ridges. Next open the label maker carefully to prevent any damage.

## Step 2



- Once the label maker is open, remove the six AAA drained batteries.
- If your using an AC adapter, replace the old one with the new HQRP adapter.
- ⚠ If you see white on the batteries, that would be corrosion. Be careful when disposing.

### Step 3



- Now place in the new six AAA batteries.
- Make sure the batteries are correctly in and touching the golden prongs.

To reassemble your device, follow these instructions in reverse order.