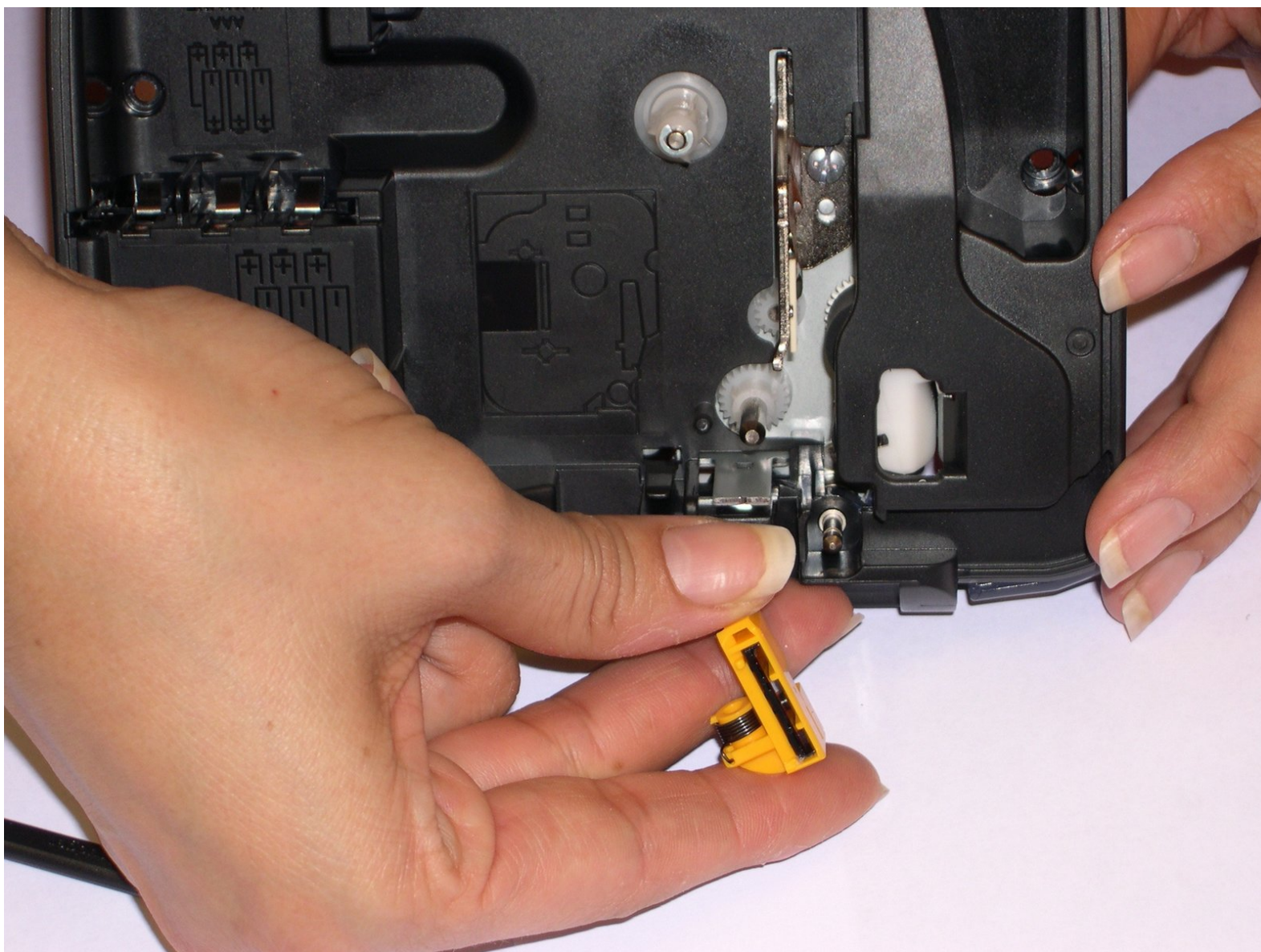




Brother PT-1290 Cutter Blade Replacement

Replace the non working blade due to normal wear and tear for a brand new sharp one. All this taking less than two minutes of your time!

Written By: Yadira Jones



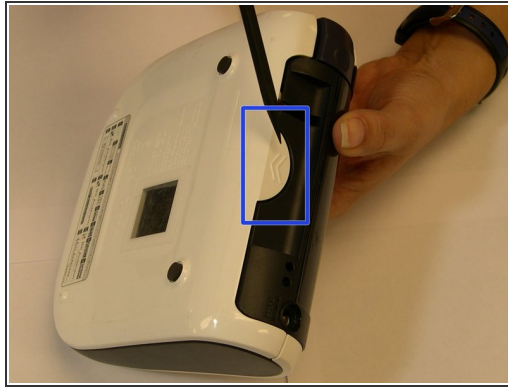
INTRODUCTION

In this guide, you will learn how to replace the cutter blade by removing the cover from the bottom of the device to gain access to the compartment containing batteries, tape cassette and up on the left hand side corner, the cutter blade.

TOOLS:

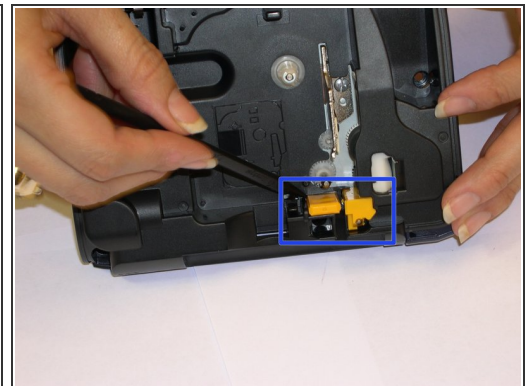
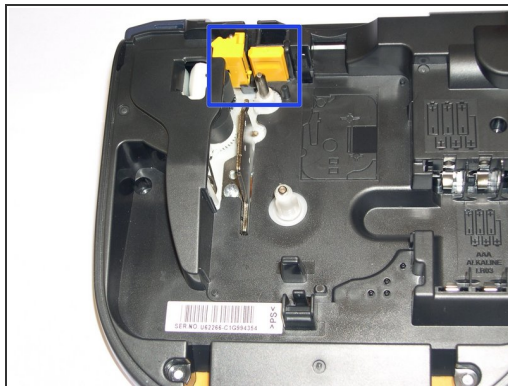
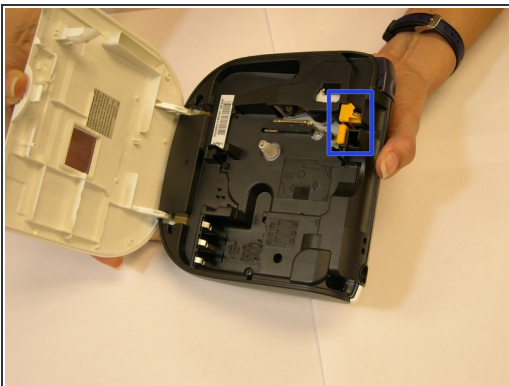
- [Spudger](#) (1)
-

Step 1 — Removing the bottom cover of the Brother PT-1290



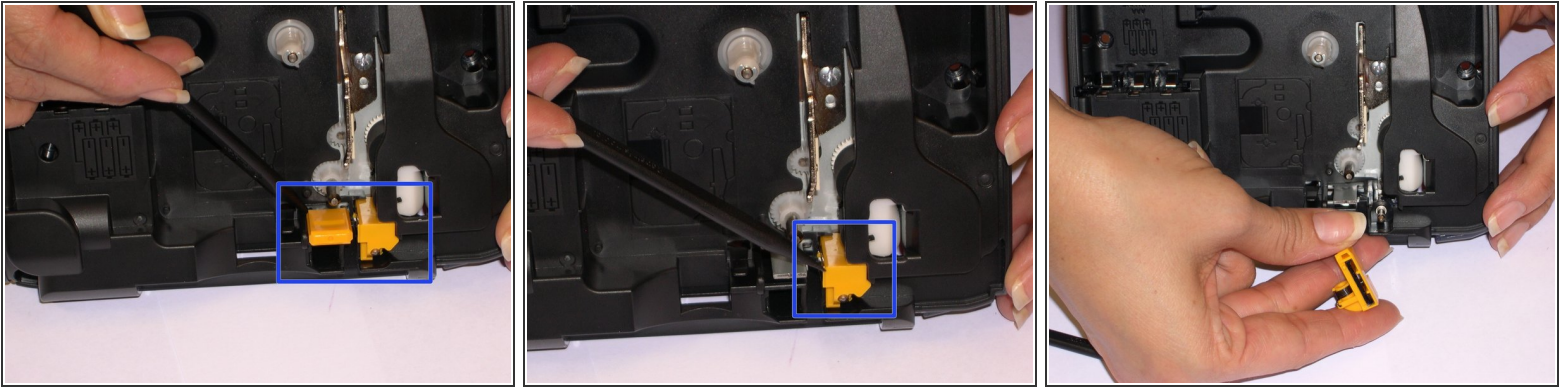
- Flip the device over and locate the round part right next to the face plate. Gently but firmly, push it down. At the same time, while holding both sides of the device, split them apart carefully because some cables are attached to both sides.
- ⓘ In this step, spudger is being used only to indicate the area. No tools other than the hands will be used.

Step 2 — Accessing the area where the blade is located



- ⓘ Once the device has been split open, locate the blade, that in this particular label printer the color is yellow as is indicated in this guide.
- Locate the area where the blade is located and get ready to start the replacing process.

Step 3 — Removing and replacing the cutter blade



- Release the blade by pushing it with the spudger and have the replacement ready to install.
- ⚠️ Avoid touching the blade for safety reasons, even though it is not sharp enough to cut the label, it can cut through your skin.

Step 4 — Putting the pieces back together



- After replacing the cutter blade, you want to make sure the bottom cover is placed correctly and the two pins that lock the cover are aligned first. These pins are not a problem at the beginning while opening the cover, because they split open right away. However, you have to be careful when closing it to avoid any damage.
- 📌 Happy fix it and after finishing the assembly...be proud of yourself!

To reassemble your device, follow these instructions in reverse order.