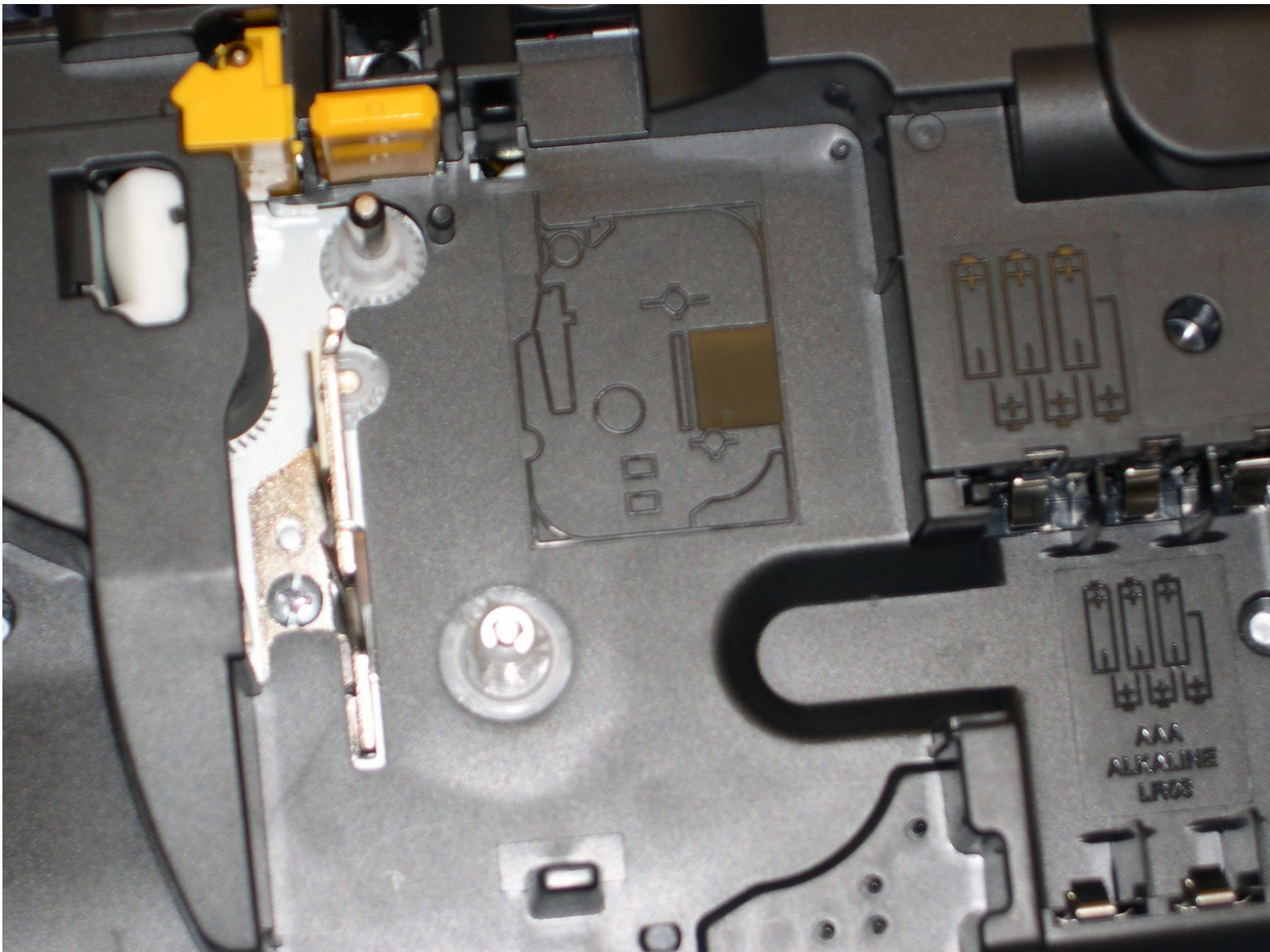




Brother PT-1290 Tape Cassette Replacement

In this guide, you will be shown step by step instructions on how to replace tape cassette.

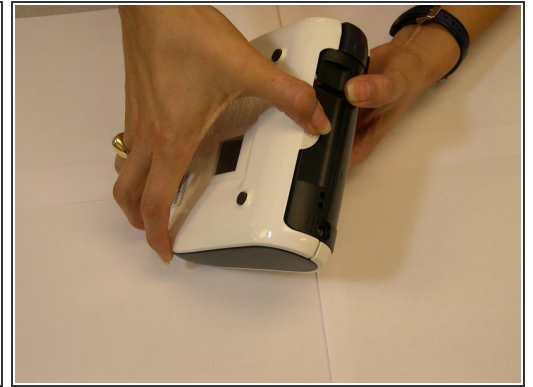
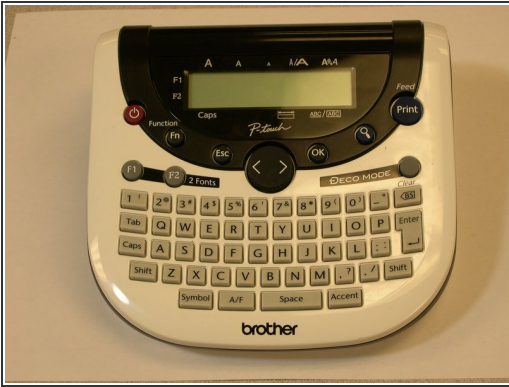
Written By: Lorraine Canez



INTRODUCTION

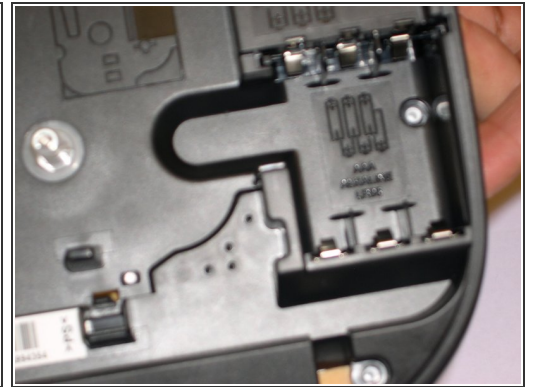
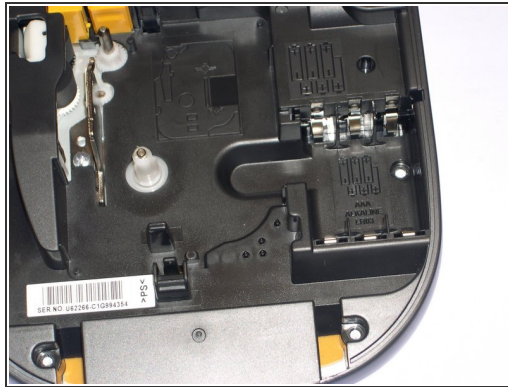
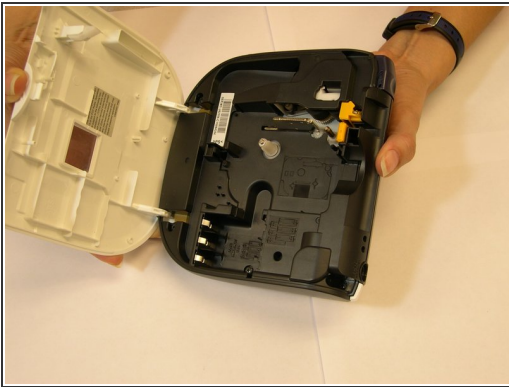
This guide provides step by step instructions for replacing the tape cassette in a Brother PT-129 when the cassette is empty and in need of more tape to function. Before beginning, make sure the device is powered off to easily disassemble.

Step 1 — Removing the back piece of the label maker.



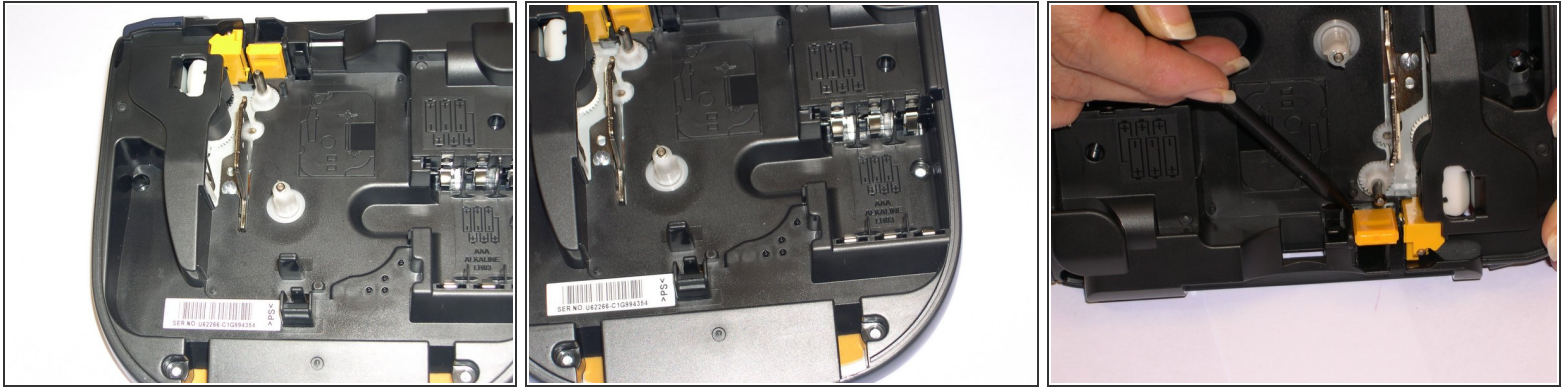
- Flip the label maker onto its backside and press down on the circle part with ridges located at the top.
- Gently pull the label maker apart. It will split in half.
- ⓘ Be careful with the back part to prevent any damage.

Step 2 — Removing batteries or AC adapter.



- ⚠ For safety precautions, it is advised that you remove the batteries before trying to remove and replace your tape cassette.
- ⓘ If you're using an AC adapter, remove it from the label maker. If using both the adapter and batteries, remove both to turn off your label maker.

Step 3 — Replacing tape cassette.



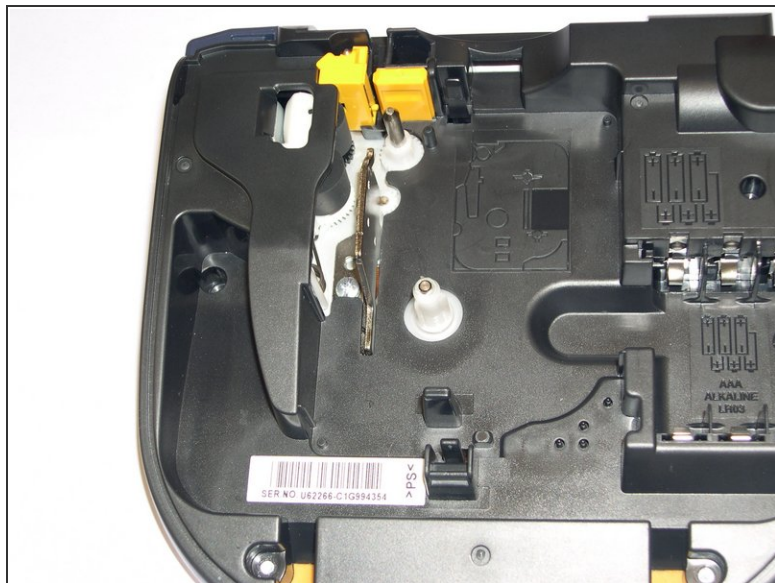
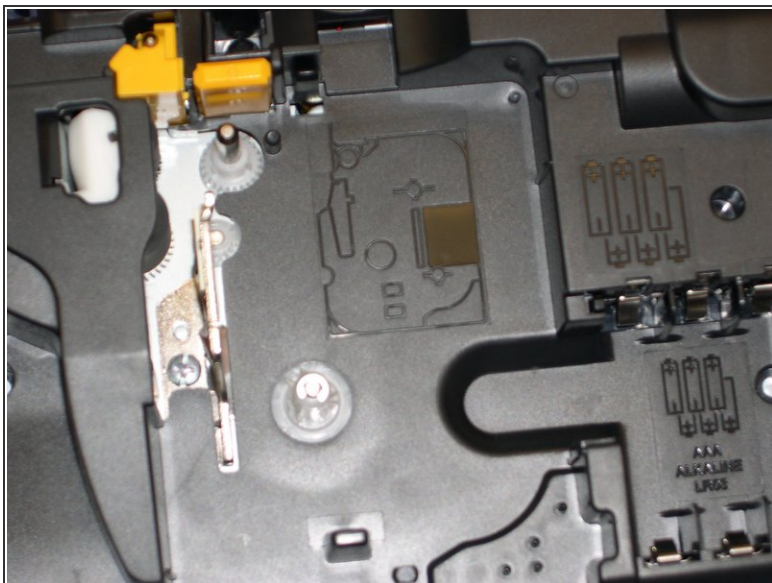
- ✦ When inserting the tape cassette it should snap into place. Check to see if the tape is feeding under the tape guides.
- i If the ribbon becomes loose, use your finger to wind the white wheel in the direction of the arrow on the tape cassette.
- i Only use Brother TZ tapes with this label maker machine.

Step 4 — Evaluating



- Now that you have inserted the tape, the batteries may be added back. Close the label maker, press the power button, then it is ready for use.
- i If you're using an AC adapter or both batteries/AC adapter, make sure the AC adapter is plugged into the AC outlet. Then plug the other end of the AC adapter in to the outlet on the top corner of the device. Also, check that your batteries are placed correctly.

Step 5 — Feeding Tape.



- After installing the tape press the up key to feed the tape, then the cutter button to cut the tape off.

To reassemble your device, follow these instructions in reverse order.