



# Brother PT-D200 Cutter Blade Replacement

This guide will give you step-by-step instructions on how to replace the cutter blade on your Brother PT-D200.

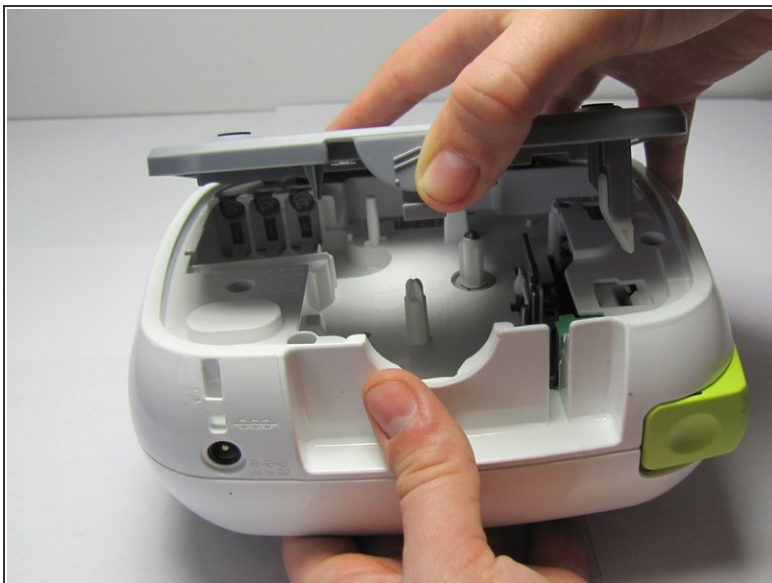
Written By: Blaire McCreary



## INTRODUCTION

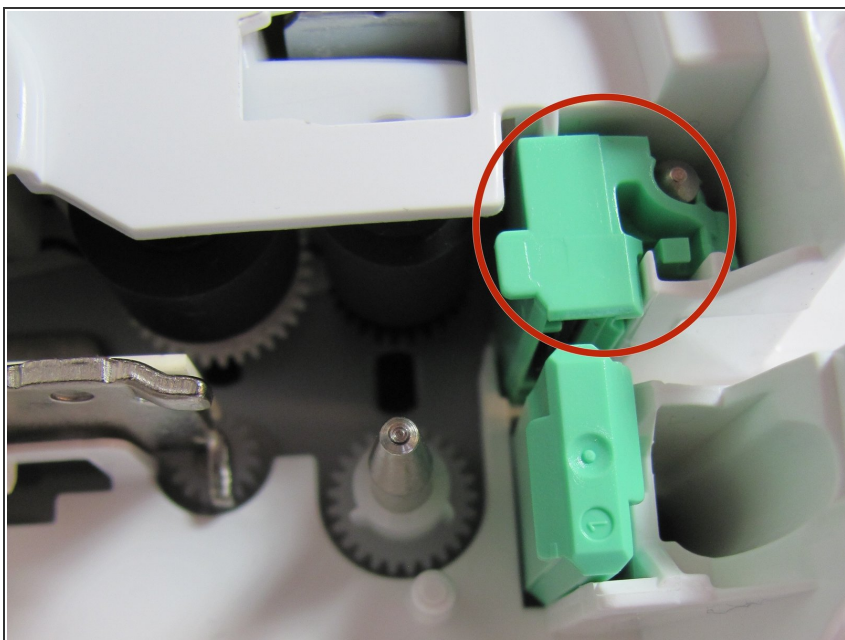
This guide will walk you through the process of replacing a dull or broken cutter blade on a Brother PT-D200.

## Step 1 — Cutter Blade



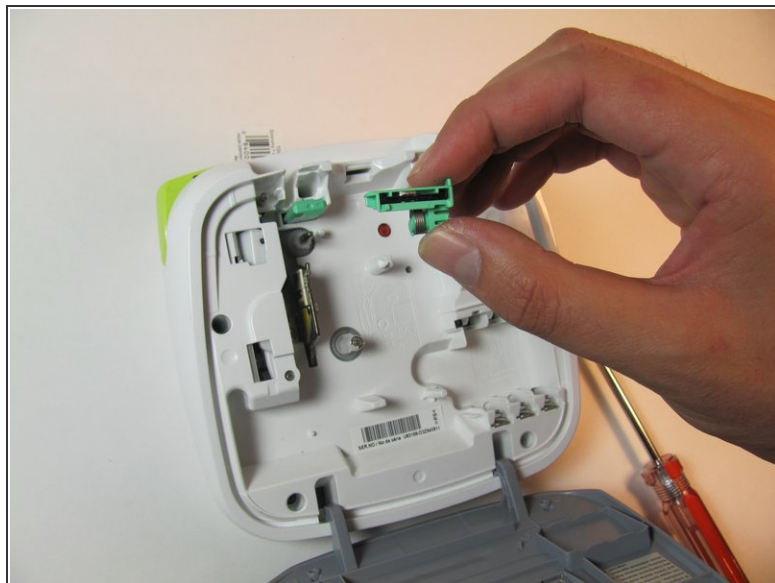
- Open the back panel of the device by pressing down on and then pulling the indication arrows on the top center of the cover upward towards you.

## Step 2



- Locate the cutter blade unit (mint green) as shown in the picture.

## Step 3



- Using the thumb and forefinger, pull up, applying a moderate amount of pressure until the cutter blade unit loosens and is removed.

 The blade is sharp.

To reassemble your device, follow these instructions in reverse order.