



# Brother PT-D200 Faceplate Replacement

This is a replacement guide for the faceplate of the Brother PT-D200. This can be used to replace a cracked faceplate or to add customized paint or decoration to the faceplate of your label printer.

Written By: [deleted]



---

## INTRODUCTION

This guide will walk you through the process of replacing the faceplate on a Brother PT-D200.

---



### TOOLS:

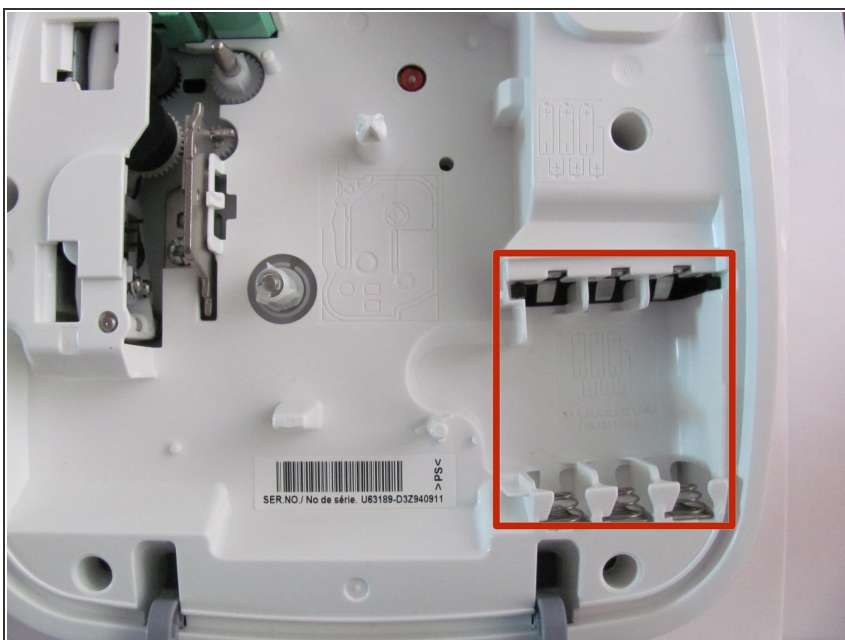
- [Phillips #2 Screwdriver](#) (1)
-

## Step 1 — Battery



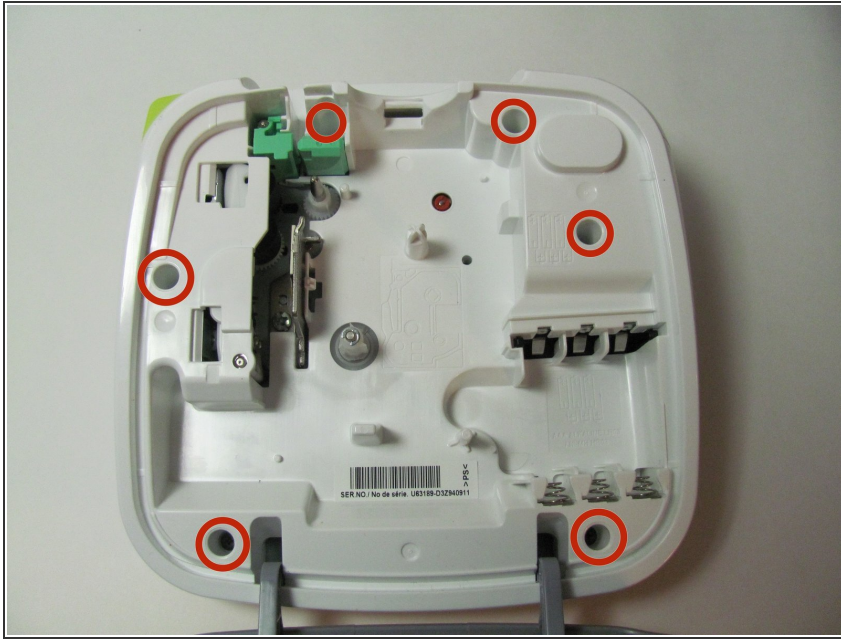
- Flip the device over and press down on the indication arrows located at the top center of the back cover and pull it open.

## Step 2



- Remove the six AAA batteries.

### Step 3 — Back of Device



- Use the Helping Hand 1/4" screwdriver to unscrew the six 3/16" corner screws.

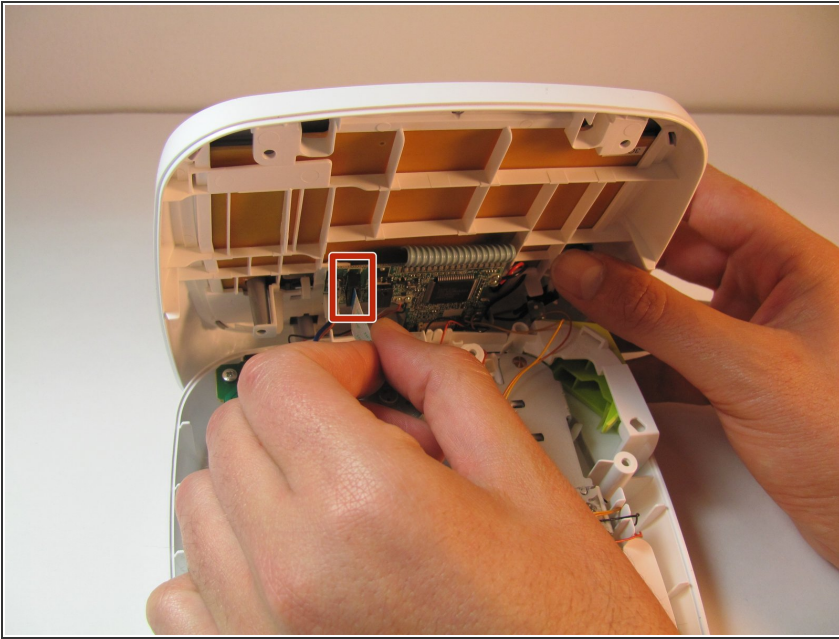
### Step 4



- Close the back cover and then flip the device over and separate the top half from the bottom half as shown.
- ⚠ Be gentle when lifting the top of the device, there is a ribbon cable attaching the two halves together.



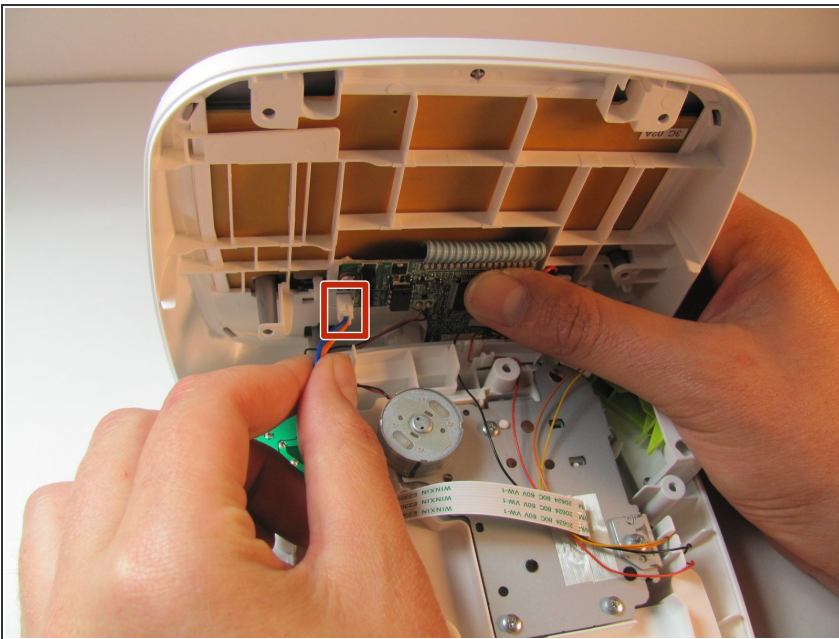
## Step 5 — Circuit Board Cables



- Gently pull out the ribbon cable from the circuit board.

⚠ The ribbon cable is very fragile.

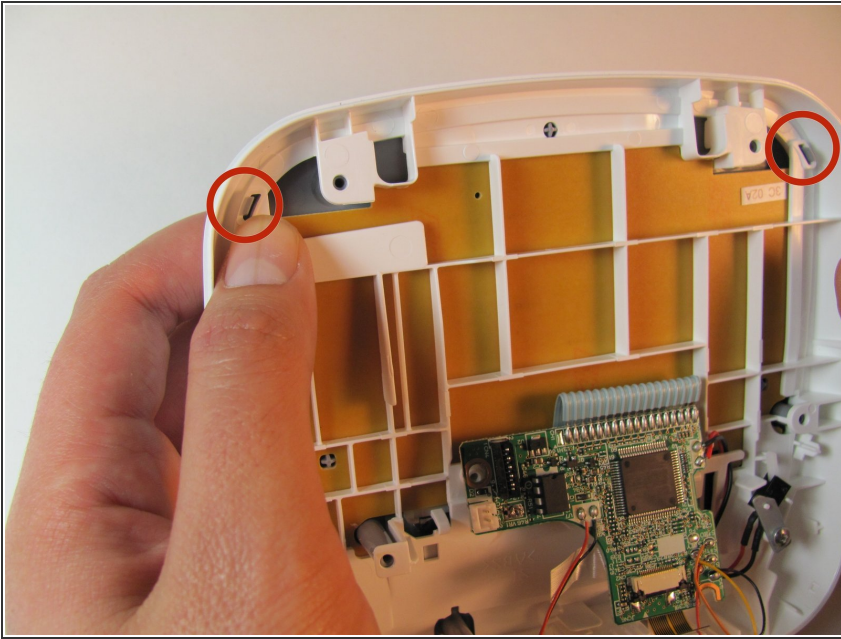
## Step 6



- Remove two-pin plastic connector from the circuit board.

⚠ Gently pull the two-pin connector from the circuit board to avoid damaging the board.

## Step 7 — Face Plate



- On the top portion of the device there are four grey clips locking the faceplate in place. The two top clips are circled in the image. The two others are located in the other corners of the device.

## Step 8



- Pull the clips inward two at a time, first the top then the bottom, to snap the face plate off.

To reassemble your device, follow these instructions in reverse order.