



Brother PT-D200 Keyboard Replacement

This guide will provide thorough step-by-step instructions for the replacement of the keyboard in the Brother PT-D200.

Written By: [deleted]



INTRODUCTION

This guide will lead you through the steps for replacing the keyboard on your Brother PT-D200.



TOOLS:

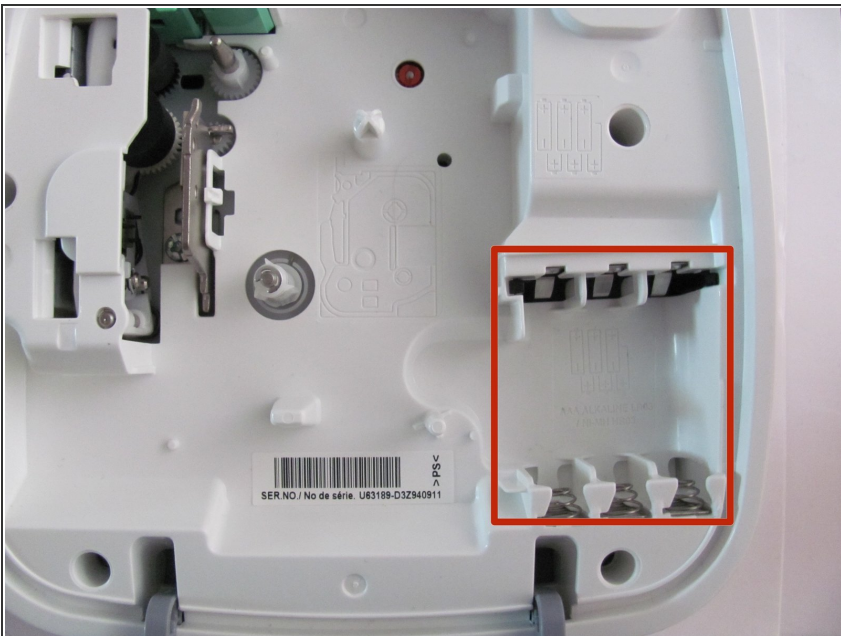
- [The Faucet Queens 20115 Helping Hand Phillips Screwdriver](#) (1)
-

Step 1 — Battery



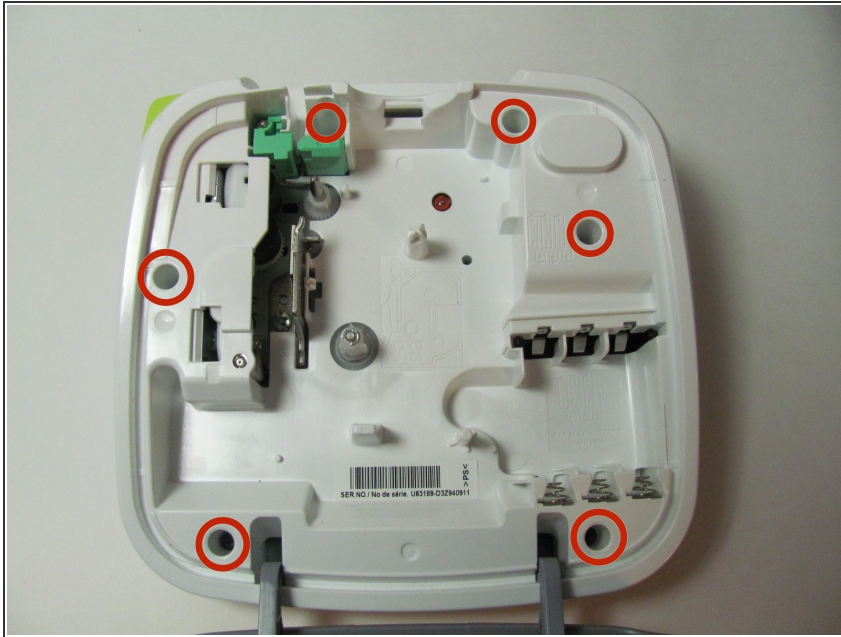
- Flip the device over and press down on the indication arrows located at the top center of the back cover and pull it open.

Step 2



- Remove the six AAA batteries.

Step 3 — Back of Device



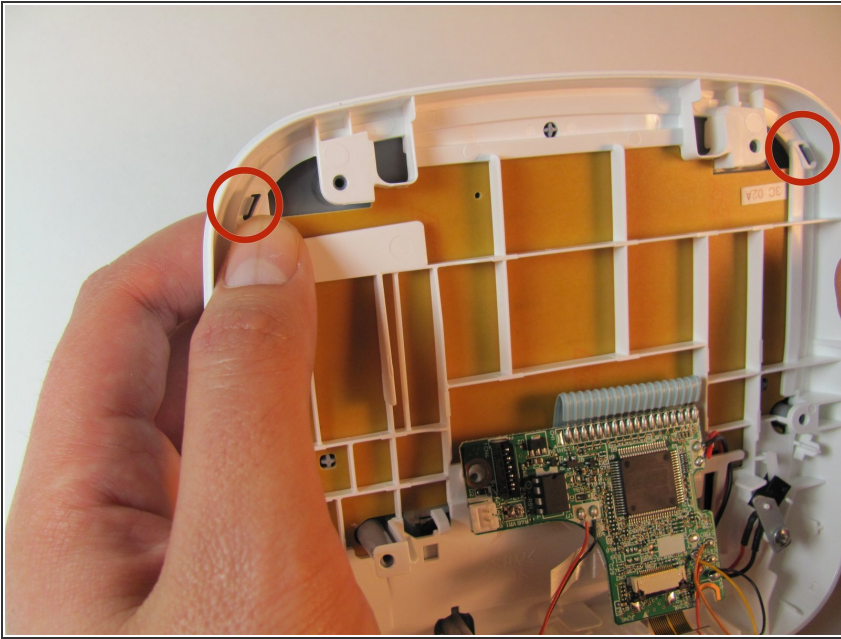
- Use the Helping Hand 1/4" screwdriver to unscrew the six 3/16" corner screws.

Step 4



- Close the back cover and then flip the device over and separate the top half from the bottom half as shown.
- ⚠ Be gentle when lifting the top of the device, there is a ribbon cable attaching the two halves together.

Step 5 — Face Plate



- On the top portion of the device there are four grey clips locking the faceplate in place. The two top clips are circled in the image. The two others are located in the other corners of the device.

Step 6



- Pull the clips inward two at a time, first the top then the bottom, to snap the face plate off.

Step 7 — Keyboard



- Peel off the rubber keyboard of the device.

To reassemble your device, follow these instructions in reverse order.