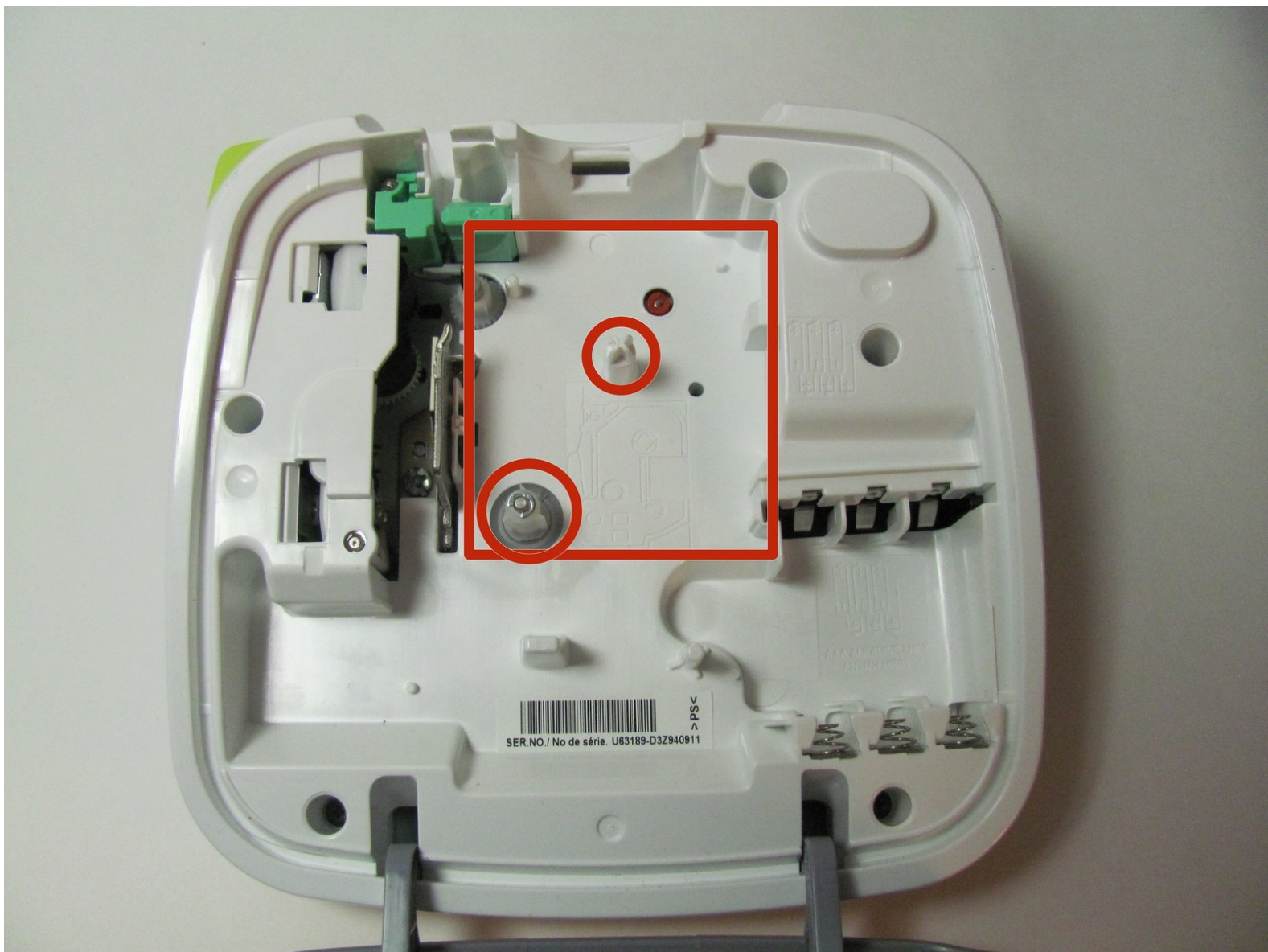




Brother PT-D200 Tape Cassette Replacement

This guide will provide thorough step-by-step instructions for the replacement of the tape cassette in the Brother PT-D200.

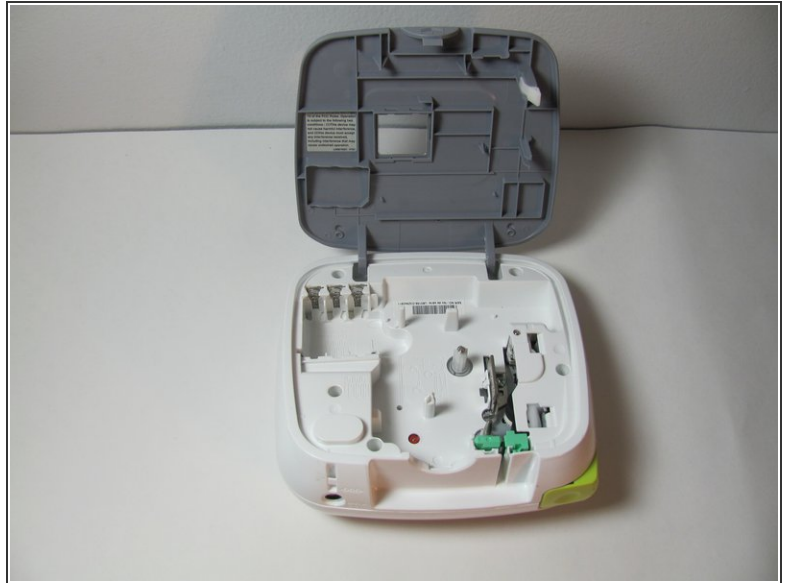
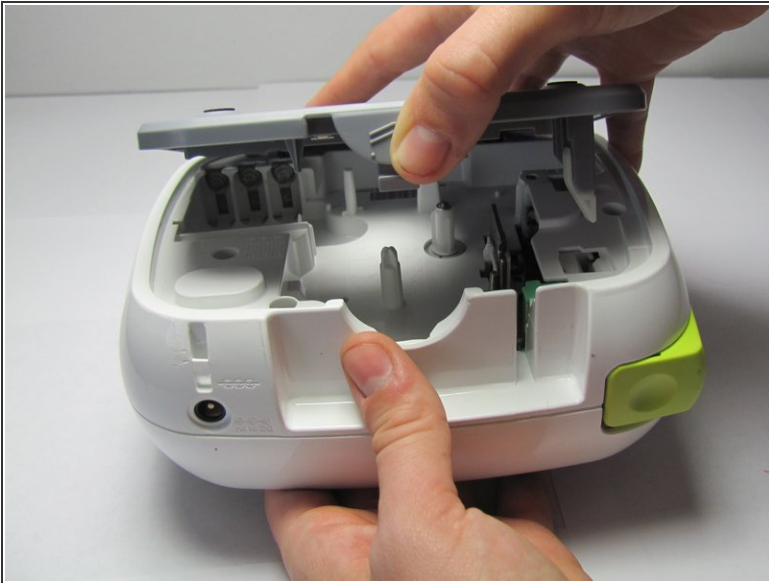
Written By: Anna McCreary



INTRODUCTION

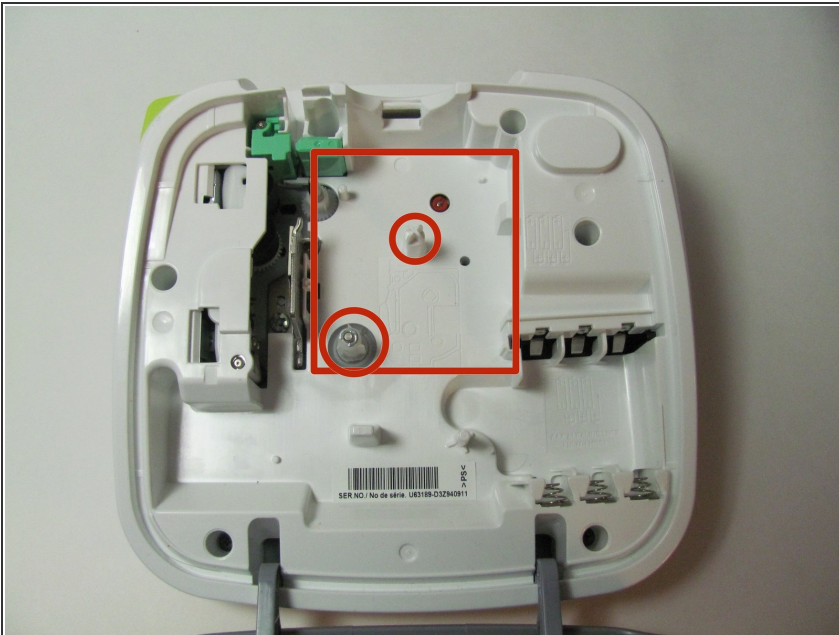
This short guide will show you how to properly replace the tape cassette in your label printer.

Step 1 — Tape Cassette



- Open the cassette cover of the device by simultaneously pressing down on the indication arrows on the top center, then pulling open.

Step 2



- Insert the tape cassette into the area outlined in red, making sure that it snaps into place.
- ⓘ Our device did not come with a tape cassette but one should be inserted into the red outlined area shown.

To reassemble your device, follow these instructions in reverse order.

This document was generated on 2019-09-22 10:38:32 AM (MST).

