



Brother Printer HL 3140 CW Paper Jam fix

Continuous paperjam fixed on HL-3140CW by removing the photocell cover.

Written By: Peter van-Velzen



INTRODUCTION

My brother HL3140CW was jamming with every page it printed. The paper jam error stopped the paper halfway along the belt at every print run and at exactly the same spot.

I took it apart and reassembled it several times before I found the very simple fix - which takes less than a minute!



TOOLS:

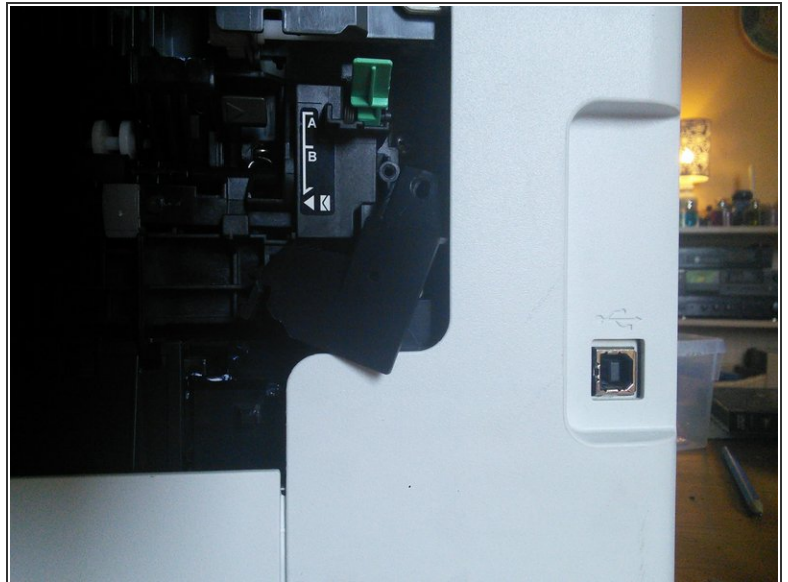
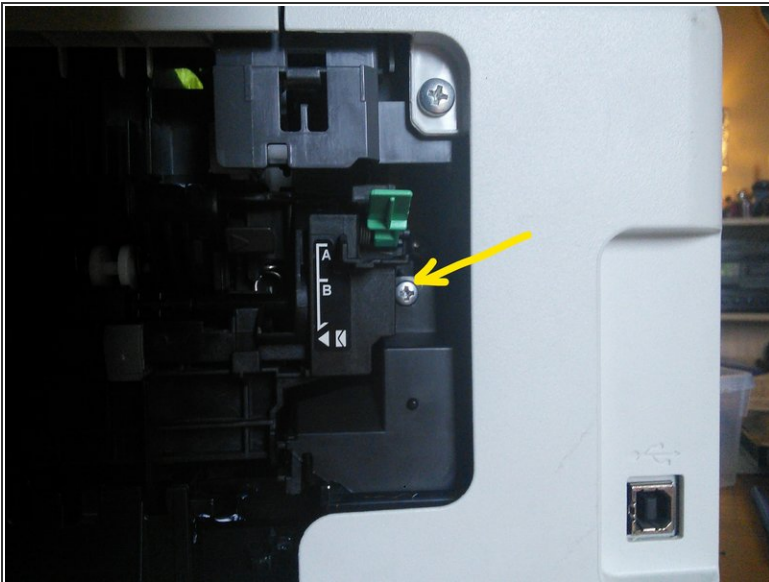
- [Phillips #2 Screwdriver](#) (1)
-

Step 1 — take off back cover



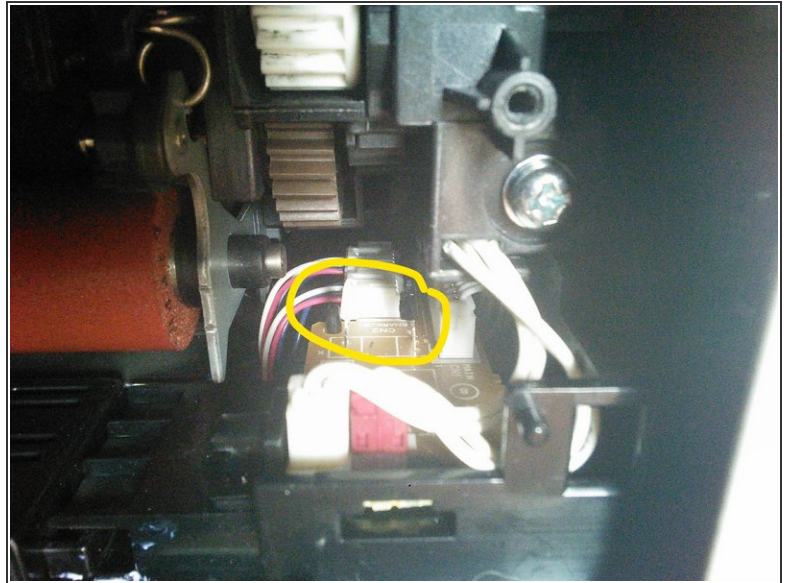
- Stick your printer on a table and get to the back of it. Then remove the white flap from its hinges. you may need to bend the plastic a little for the plastic studs to pop out.

Step 2 — remove inside cover



- With the white flap off, unscrew the single screw and pry out this black cover.
- Once out this will allow you to un-clip and remove the paper guide from the printer.(pinch the two green levers)

Step 3 — remove photocell shroud



- You now have access to the black shroud that covers the photocell emitter & receiver. Pry it upwards and off with a small opening tool.
- Inspect the paperguide: a small black spring loaded lever in the middle should move the "blocking piece" freely up and down.
- Reassemble in reverse order, ensuring the blocking piece moves freely between the photocell emitter & receiver.

To reassemble your device, follow these instructions in reverse order. This may be the fix you are looking for or perhaps your printer has a different issue. Clearly a slight knock to this plastic shroud meant the photocells were no longer aligned and this printer was unusable...until now.