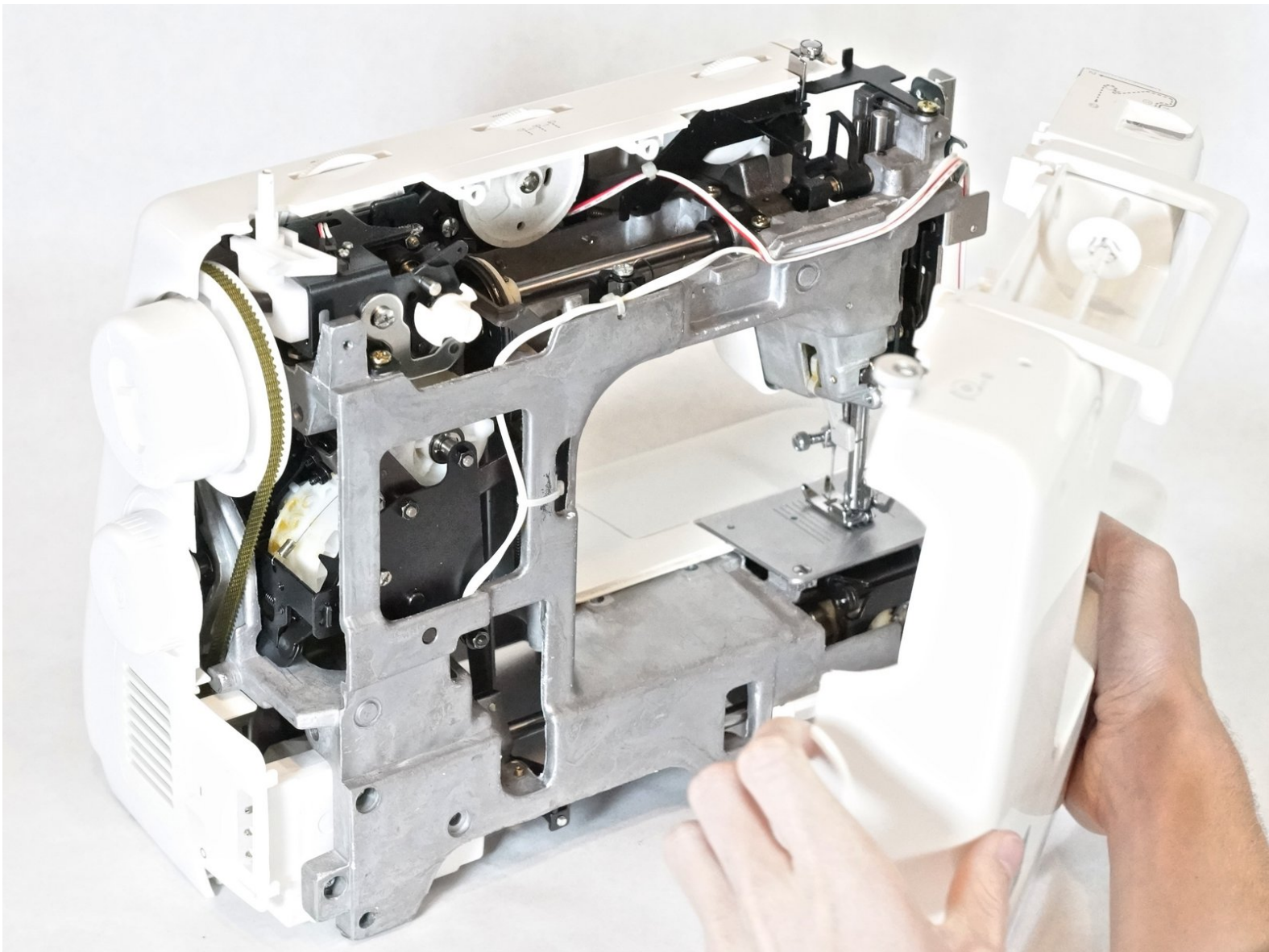




Brother XR-40 Back Panel Disassembly

This guide will demonstrate the removal process of the rear casing. This will allow access to most of the machine's internal parts.

Written By: Allison



INTRODUCTION

In this step we will be removing the rear casing from the sewing machine. This is necessary to access the inside components of the machine.



TOOLS:

- [Phillips #2 Screwdriver](#) (1)
-

Step 1 — Back Panel



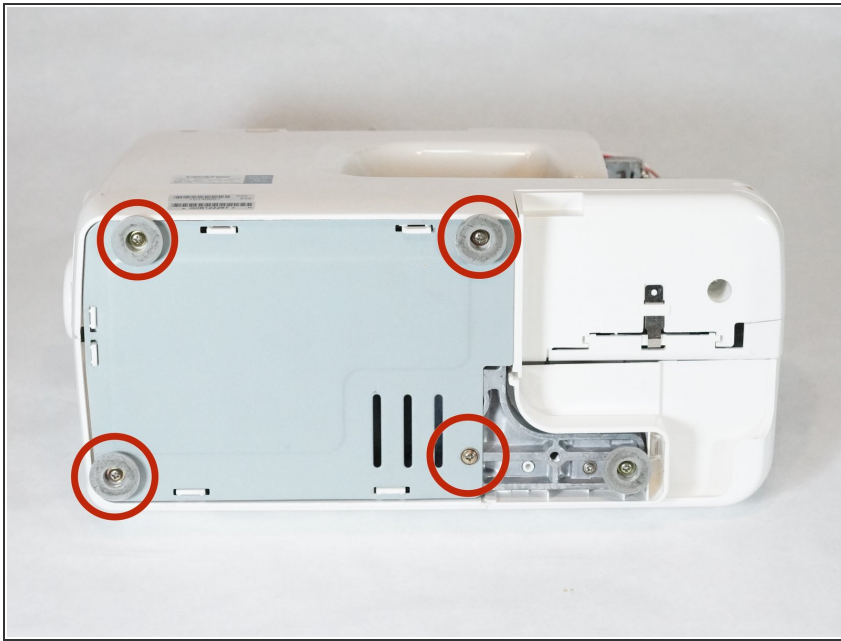
- Place the machine on a solid surface.
- Remove the 14mm Phillips #2 screw holding on the face cover.

Step 2



- Remove the two 14mm Phillips #2 screws and two 22mm Phillips #2 screws that secure the rear casing.

Step 3



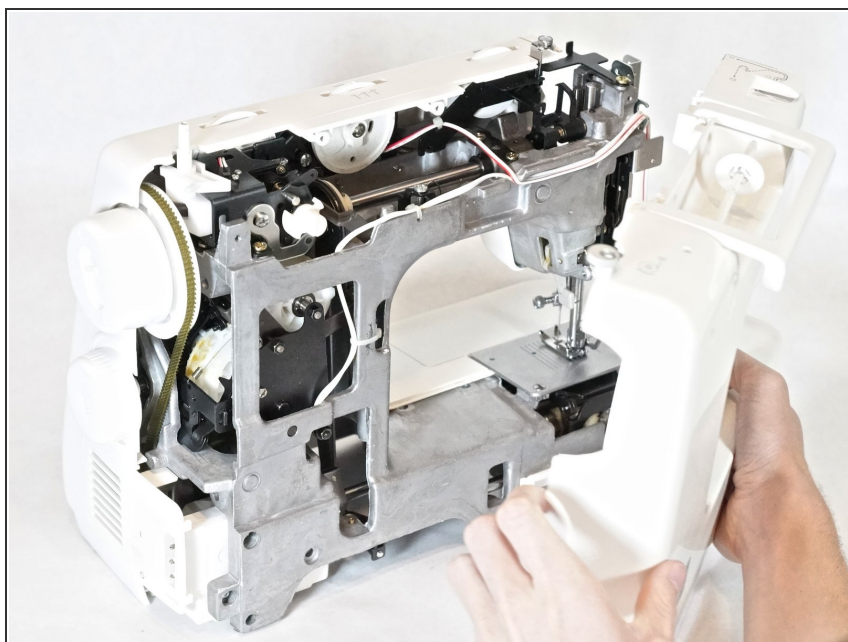
- Lay the machine on its side.
- Remove the four 10mm Phillips #2 screws that hold the bottom panel in place.
- ⓘ The feet will come off with the screws.

Step 4



- Remove the bottom panel.

Step 5



- Place the machine upright.
- Remove the rear casing.
- ① You may have to wiggle the panel and pull at the same time.

To reassemble your device, follow these instructions in reverse order.