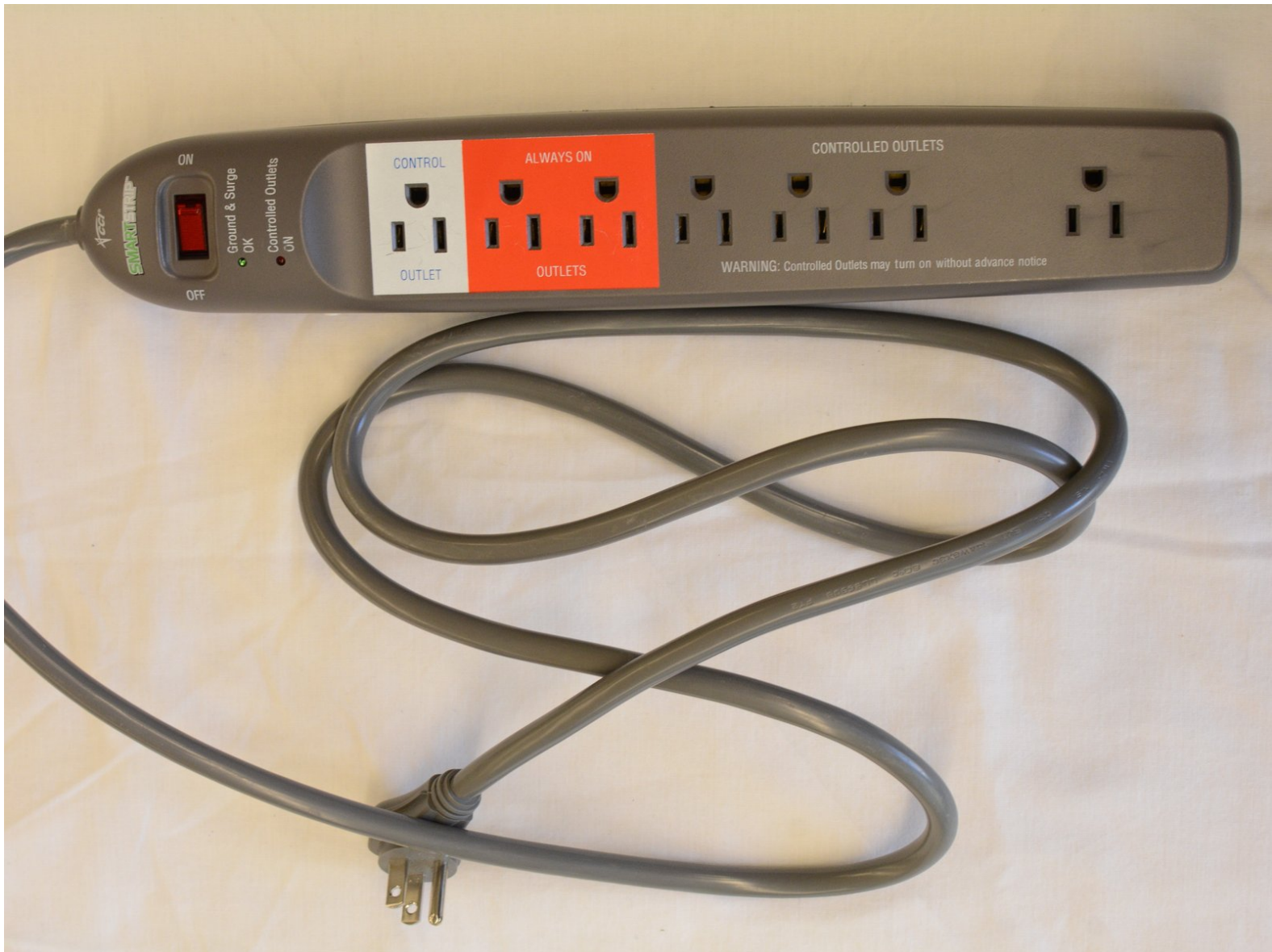




# CCI Smart Strip 04941 Teardown

Taking apart a Transient Voltage Surge Suppressor with energy saving capabilities

Written By: nils smith





## TOOLS:

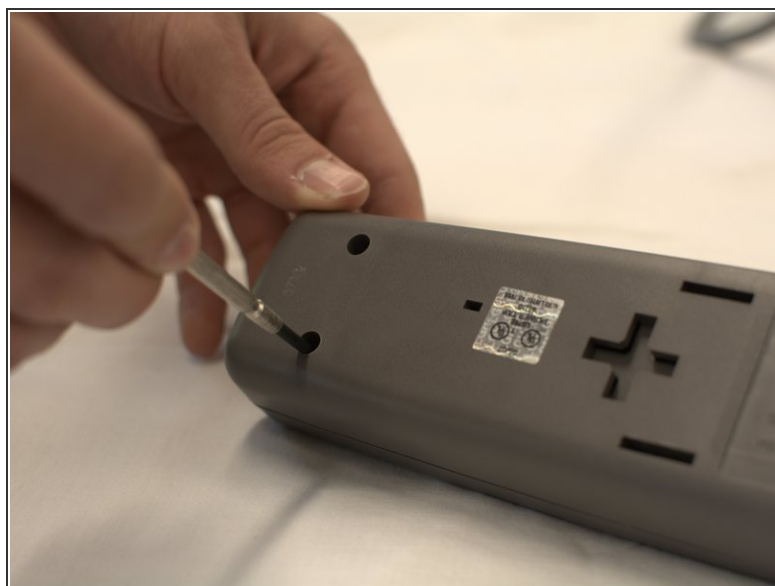
- [2.4mm Flathead Screwdriver](#) (1)
  - [Phillips #0 Screwdriver](#) (1)
-

## Step 1 — CCI Smart Strip 04941 Teardown



- The Assembled Product, unplugged from wall

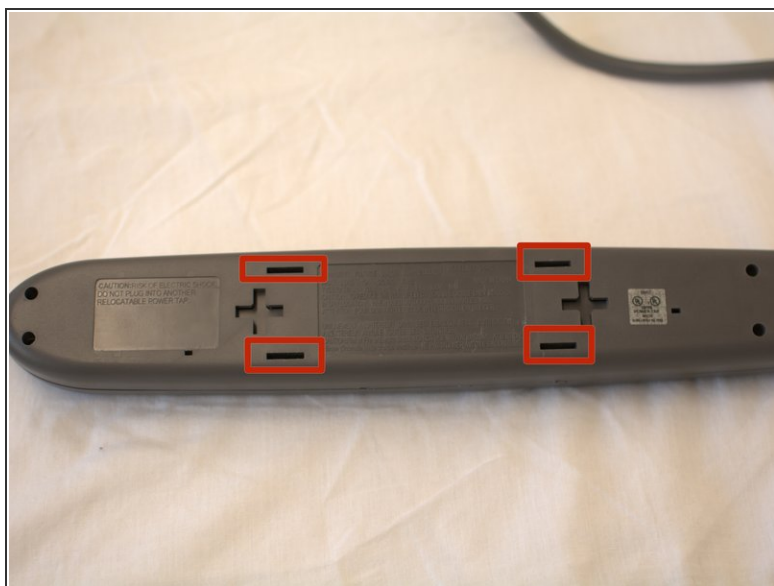
## Step 2



- Turn Smart Strip upside down and locate four screw holes in corners
- Unscrew four corner screws with #0 Phillips Screwdriver

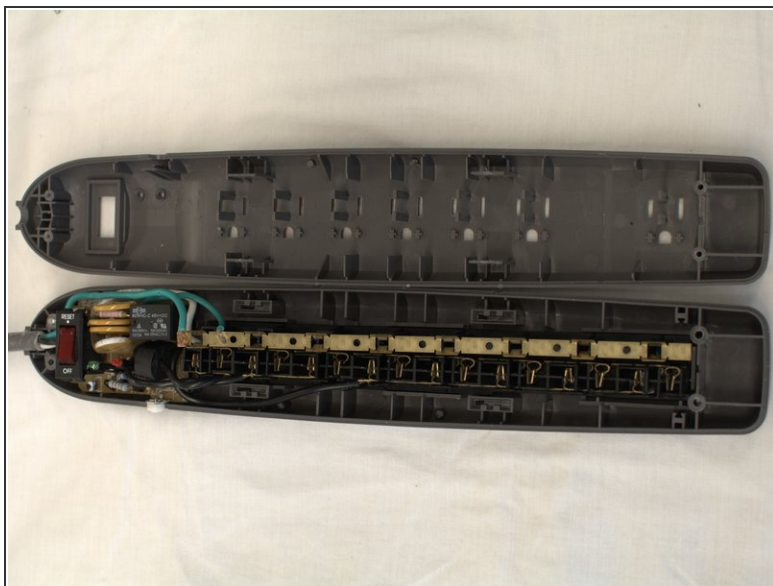
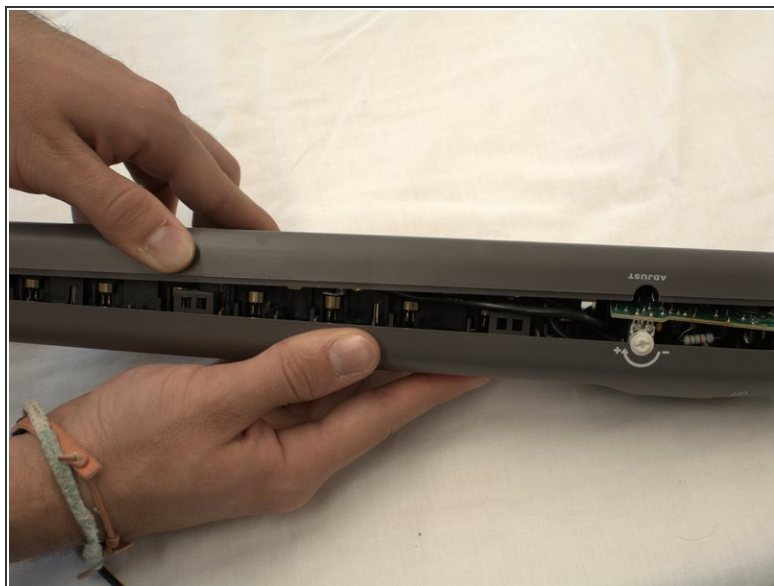


### Step 3



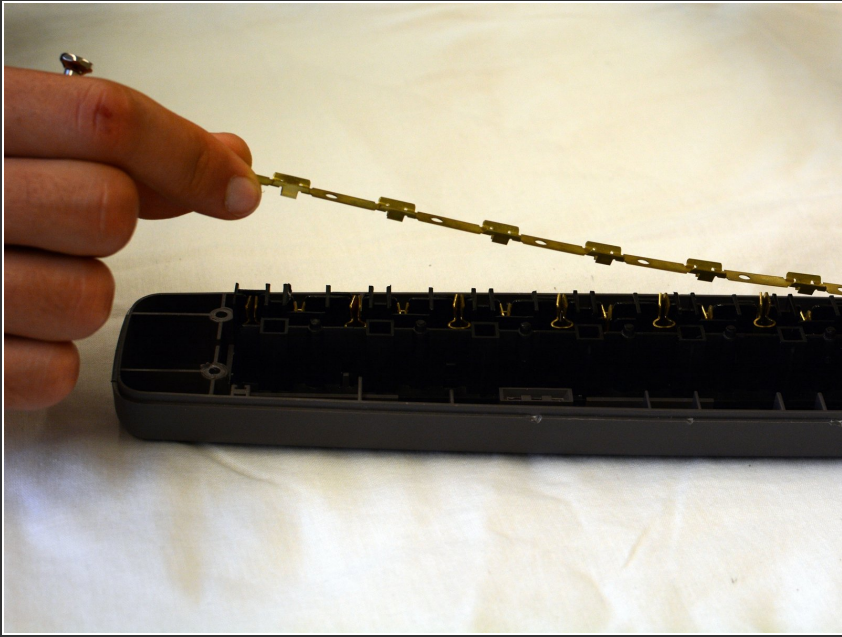
- Locate four latch slots in case
- Use 2.4mm Slotted Screwdriver, put tip into center of slot, with tip on outer edge of slot, and press inward

## Step 4



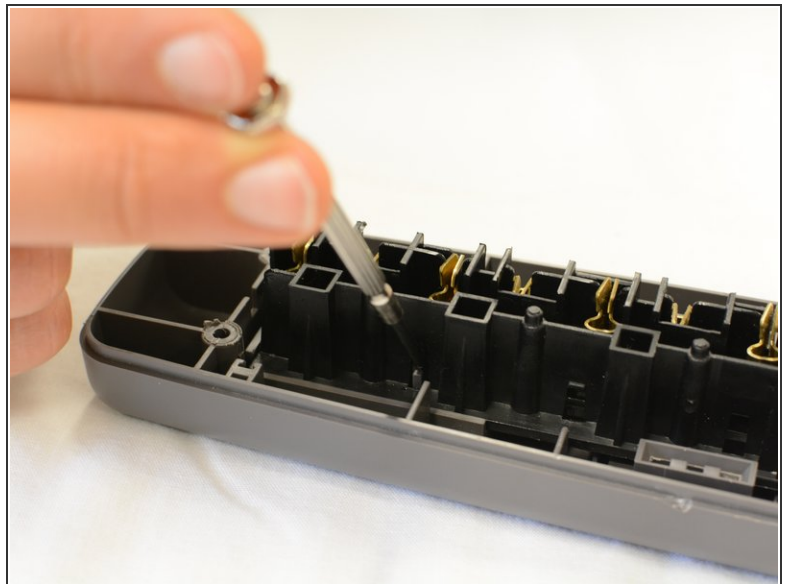
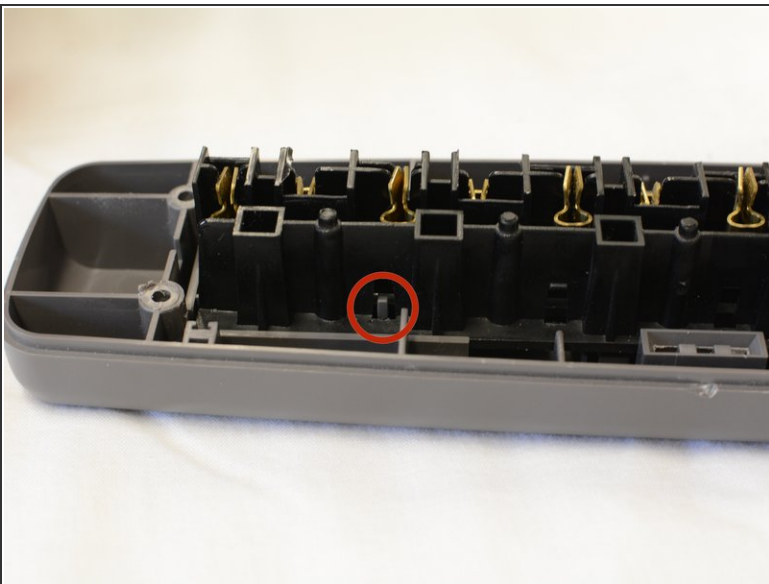
- Take two halves of case apart with your hands

## Step 5



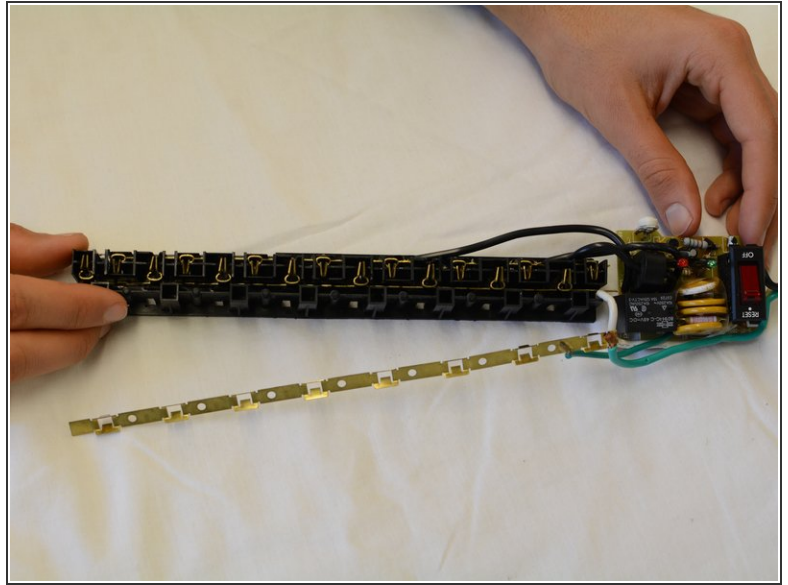
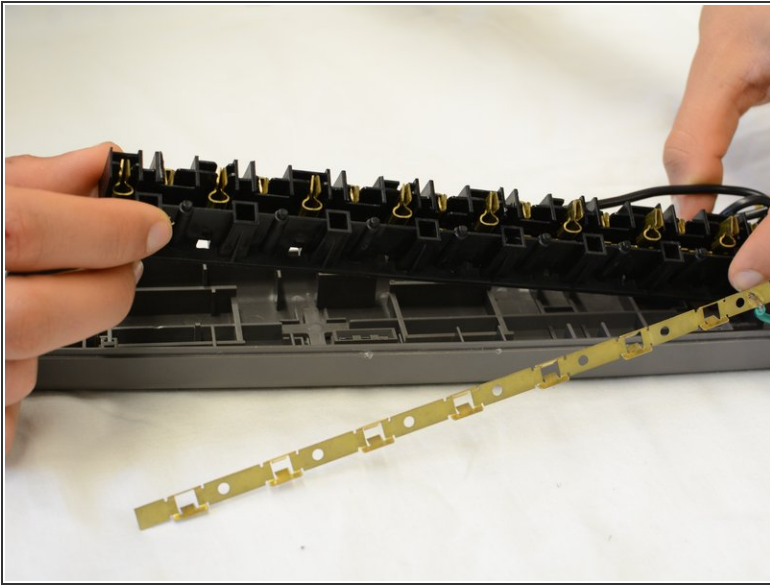
- Lift Ground Copper Strip upward off of power plugs by hand

## Step 6



- Locate latch securing power plugs to bottom of case
- Using slotted 2.4mm screwdriver, pry latch away from power plugs to loosen power plugs

## Step 7



- Lift power plugs out of bottom of case along with circuit assembly

To reassemble your device, follow these instructions in reverse order.